

BENCHMARK:  
 BM #1: "□" Cut in middle of  
 N headwall of RCBC on 21st  
 St. North. 1004.3' W & 22.1'  
 N of SE Cor., SE1/4, Sec. 2,  
 T-27-S, R-2-E.  
 Elev. = 173.23 City Datum

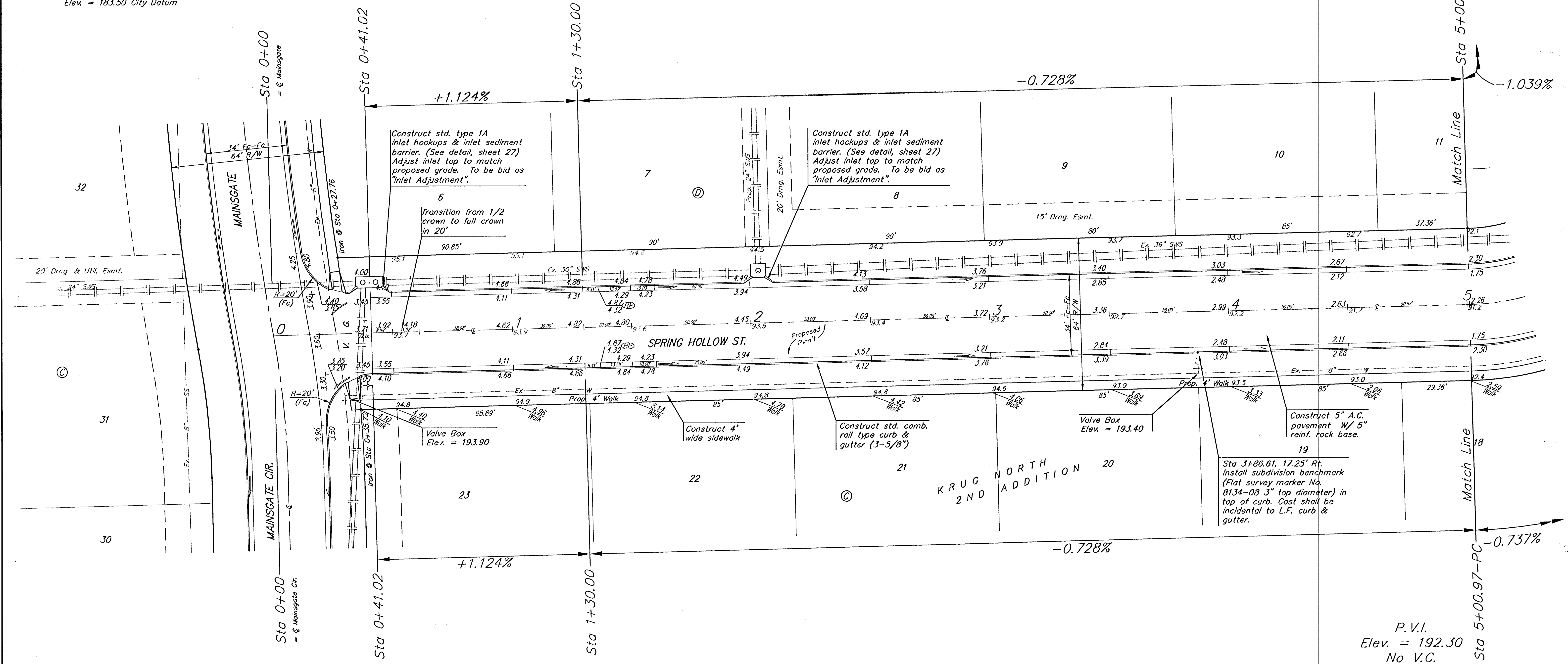
BM #2: "□" Cut at the SE  
 corner of the intersection of  
 Castle Rock & Castle Rock Ct.,  
 Krug North Addition.  
 Elev. = 183.50 City Datum

Scale: 1" = 20'  
 • = Iron

P.V.I.  
 Elev. = 195.00  
 60' V.C.

P.V.I.  
 Elev. = 192.30  
 No V.C.

P.V.I.  
 Elev. = 192.30  
 No V.C.



Construct std. type 1A  
 inlet hookups & inlet sediment  
 barrier. (See detail, sheet 27)  
 Adjust inlet top to match  
 proposed grade. To be bid as  
 "Inlet Adjustment".

Construct std. type 1A  
 inlet hookups & inlet sediment  
 barrier. (See detail, sheet 27)  
 Adjust inlet top to match  
 proposed grade. To be bid as  
 "Inlet Adjustment".

Transition from 1/2  
 crown to full crown  
 in 20'

Valve Box  
 Elev. = 193.90

Construct 4'  
 wide sidewalk

Construct std. comb.  
 roll type curb &  
 gutter (3-5/8")

Valve Box  
 Elev. = 193.40

Construct 5" A.C.  
 pavement w/ 5"  
 reinf. rock base.

Sta 3+86.61, 17.25' Rt.  
 Install subdivision benchmark  
 (Flat survey marker No.  
 8134-08 3" top diameter) in  
 top of curb. Cost shall be  
 incidental to L.F. curb &  
 gutter.

NOTE: ROLL TYPE CURB & GUTTER TO  
 BE CONSTRUCTED ON THE  
 PAVEMENT SHOWN ON THIS SHEET.  
 TOP OF CURB ELEVATIONS ARE  
 GIVEN FOR FULL HEIGHT CURB.

		KRUG NORTH 2ND ADD. - PH. III <b>SPRING HOLLOW ST.</b> STA 0+00 TO STA 5+00.97	
<small>Baughman Company, P.A. 315 Ellis St. Wichita, KS 67211 316-261-2711 316-261-0149          ENGINEERING   SURVEYING   PLANNING   LANDSCAPE ARCHITECTURE</small>			
PROJECT NUMBER 47284249	DESIGN ATD	DRAWN TMS	
REVISIONS:	APPROVED DATE 01/06	SCALE Noted	
		SHEET <b>13</b> OF <b>39</b>	
<small>KrugNorth2nd\PhaseIII\Set8</small>		<small>0509-E368</small>	