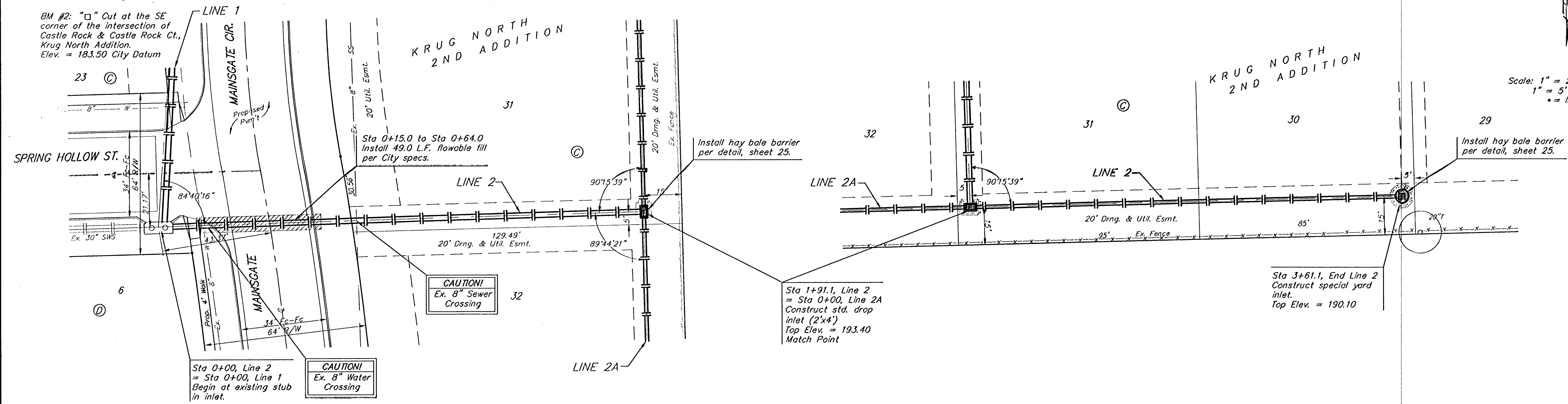
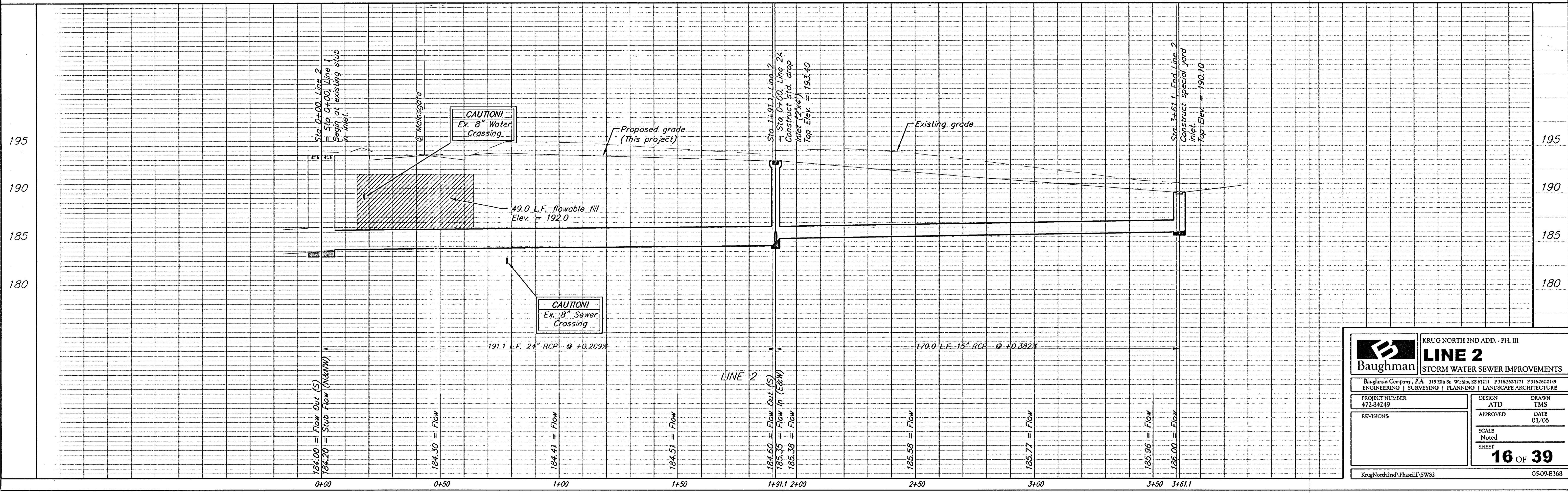


**BENCHMARK:**  
 BM #1: "□" Cut in middle of N headwall of RCBC on 21st St. North, 1004.3' W & 22.1' N of SE Cor., SE1/4, Sec. 2, T-27-S, R-2-E. Elev. = 173.23 City Datum

BM #2: "□" Cut at the SE corner of the intersection of Castle Rock & Castle Rock Ct., Krug North Addition. Elev. = 183.50 City Datum



Scale: 1" = 20' Horizontal  
 1" = 5' Vertical  
 • = Iron



		KRUG NORTH 2ND ADD. - PH. III	
		<b>LINE 2</b>	
STORM WATER SEWER IMPROVEMENTS		Baughman Company, P.A. 315 Ellis St. Waltham, MA 02154 P 316-282-7111 F 316-282-0149 ENGINEERING   SURVEYING   PLANNING   LANDSCAPE ARCHITECTURE	
PROJECT NUMBER 472-84249	DESIGN ATD	DRAWN TMS	APPROVED DATE 01/06
REVISIONS	SCALE Noted SHEET		
		<b>16 OF 39</b>	
KrugNorth2ndPhaseIIISWS2		0509-E368	