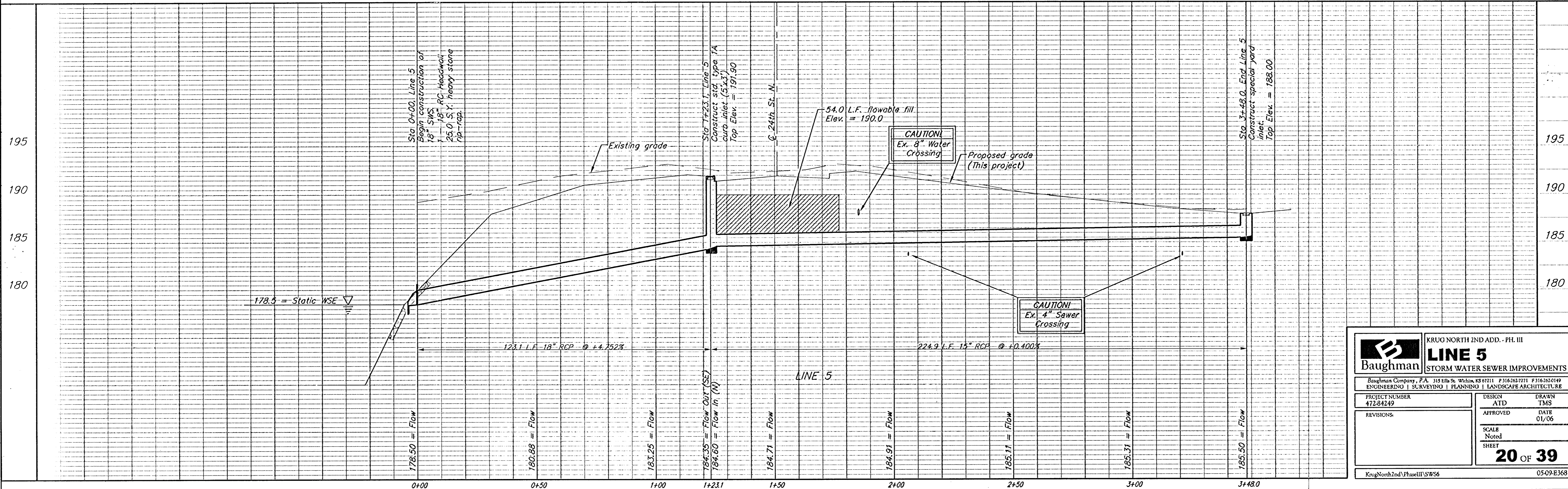
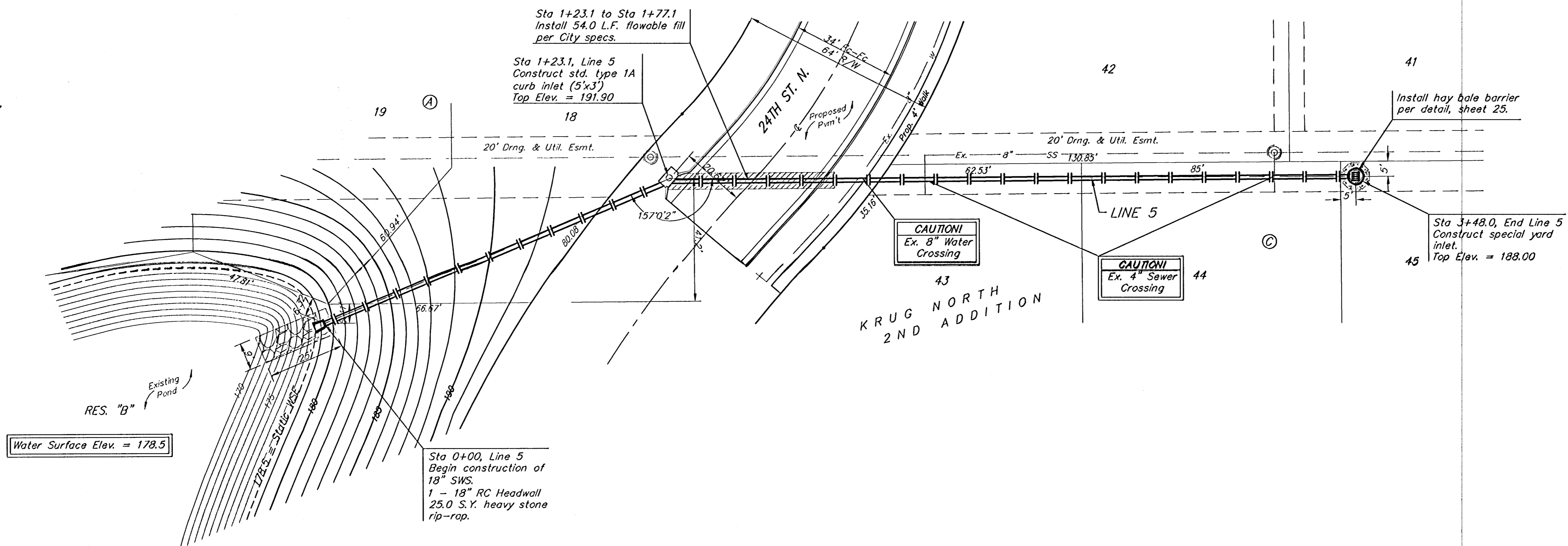


BENCHMARK:  
 BM #1: "□" Cut in middle of N headwall of RCBC on 21st St. North. 1004.3' W & 22.1' N of SE Cor., SE 1/4, Sec. 2, T-27-S, R-2-E.  
 Elev. = 173.23 City Datum

BM #2: "□" Cut at the SE corner of the intersection of Castle Rock & Castle Rock Ct., Krug North Addition.  
 Elev. = 183.50 City Datum

Scale: 1" = 20' Horizontal  
 1" = 5' Vertical  
 • = Iron



		<b>LINE 5</b> STORM WATER SEWER IMPROVEMENTS	
		<small>Baughman Company, P.A. 315 Elm St. Waltham, MA 02451 P 316-242-149 F 316-242-149          ENGINEERING   SURVEYING   PLANNING   LANDSCAPE ARCHITECTURE</small>	
PROJECT NUMBER 472-84249	DESIGN ATD	DRAWN TMS	APPROVED DATE 01/06
REVISIONS:	SCALE Noted	SHEET <b>20 OF 39</b>	
<small>KrugNorth2nd\PhaseIII\SW56</small>		<small>05-09-E368</small>	