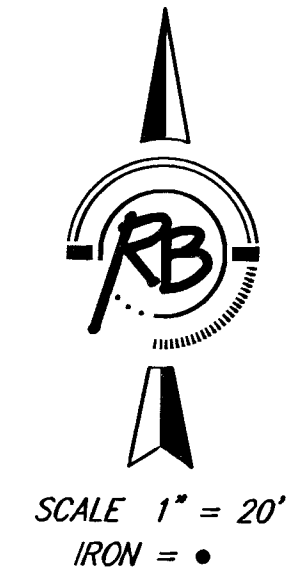
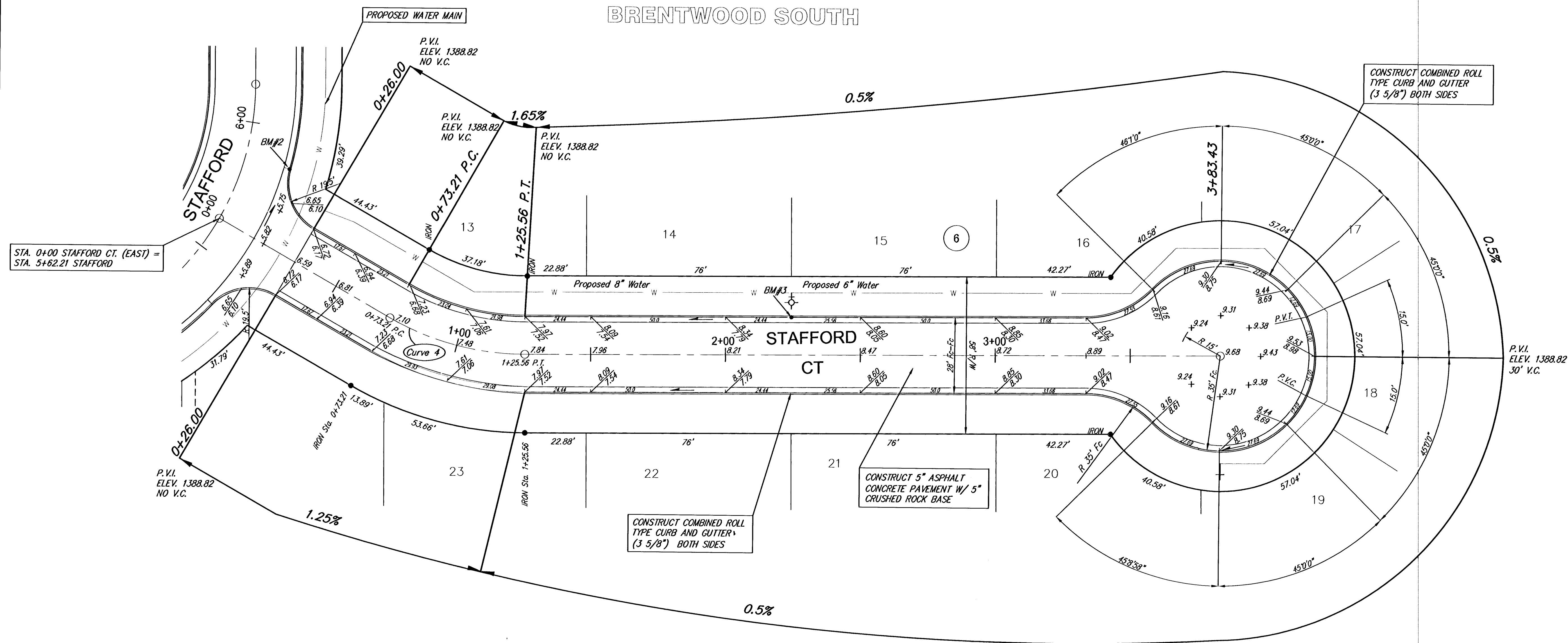


Curve 4  
Curve Data Based on Centerline  
Rad. = 100' Delta = 90°00'00" Tangent = 100.00'  
Arc = 52.36' L.C. = 141.42' Def/P.I. = 51.56808 Min.

| Station | Arc    | 8 Lt.  | 8 Rt.  | Defl.     | T. Defl.  |
|---------|--------|--------|--------|-----------|-----------|
| 0+73.21 | -      | -      | -      | 0°00'00"  | 0°00'00"  |
| 0+75.00 | 1.79'  | 4.03'  | 6.71'  | 1°32'18"  | 1°32'18"  |
| 1+00.00 | 25.00' | 54.94' | 91.57' | 21°29'09" | 23°01'27" |
| 1+25.56 | 25.56' | 58.11' | 93.52' | 21°58'02" | 44°59'29" |

Subdivision Bench Marks

| No. | Street and Station            | From CL   | Description               | Elevation |
|-----|-------------------------------|-----------|---------------------------|-----------|
| 3   | Stafford Ct (E), Sta. 2+24.40 | 14.0' Lt. | N Curb of Stafford Ct (E) |           |



STA. 0+00 STAFFORD CT. (EAST) = STA. 5+62.21 STAFFORD

CONSTRUCT COMBINED ROLL TYPE CURB AND GUTTER (3 5/8\"/>

CONSTRUCT 5\"/>

CONSTRUCT COMBINED ROLL TYPE CURB AND GUTTER (3 5/8\"/>

NOTE: ROLL TYPE CURB AND GUTTER TO BE CONSTRUCTED ALONG PAVEMENT DEPICTED ON THIS SHEET

Brentwood South Addition, Paving Improvements  
Stoneybrook Court (West)  
WICHITA, KANSAS

Ruggles & Bohm, P.A.  
Engineering, Surveying, Land Planning

924 North Main  
Wichita, Kansas 67203  
www.rbkansas.com

(316) 264-8008  
(316) 264-4621 fax  
E-mail: info@rbkansas.com

|         |     |                |                          |
|---------|-----|----------------|--------------------------|
| DESIGN  | KWL | REVISION       |                          |
| DRAWN   | RLS | DATE           | Sept. 13, 2005           |
| REVIEW  |     | PROJECT NUMBER | 472-84270                |
| UTILITY |     | DRAWING FILE   | paving [Stafford Ct (E)] |

REL. JOB 2730E  
SHEET 9 OF 30