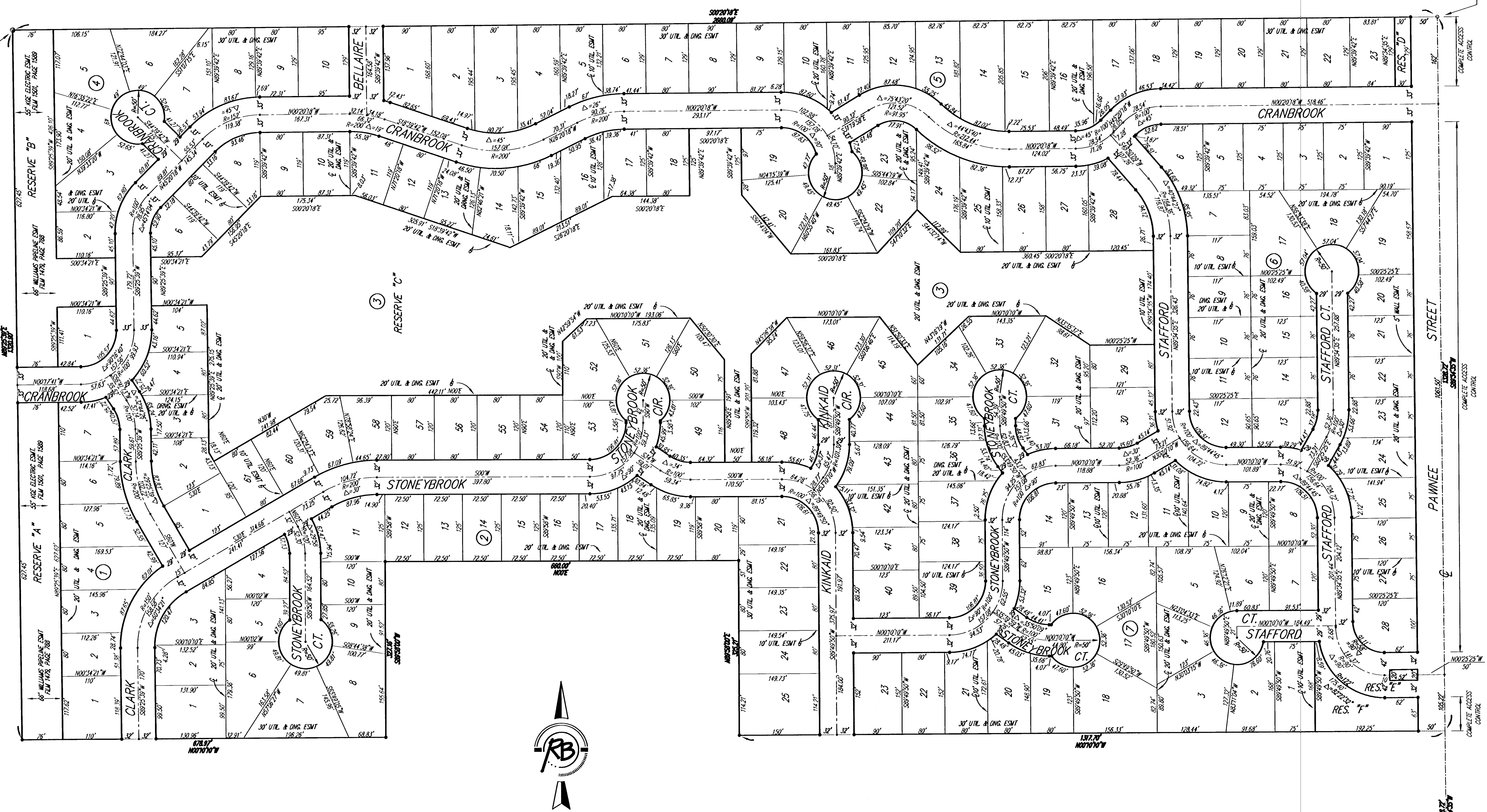
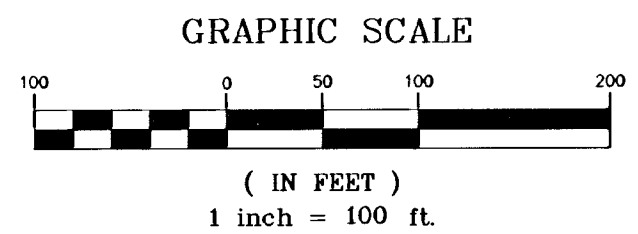


BRENTWOOD SOUTH ADDITION

WICHITA, SEDGWICK COUNTY, KANSAS



Please contact Western Resources (or its successor) Electric Transmission Engineering Department (currently 785-575-8219) before conducting any proposed construction activities that could place people, equipment, or facilities within Western Resources' easement, shown on this plat, designated as Film 1501, Page 1589, dated December 29, 1994.



- △ = CITY OF WICHITA CONTROL THUMB (FOUND)
- = 1/2" REBAR W/ GARDER CAP (FOUND)
- = 5/8" REBAR (FOUND)
- = 1/2" REBAR W/ SHB CAP (SET)

BLOCK	LOT NO.	ELEVATION (M.G. V.D.)
3	Lots 1-20, 47 Lots 50-61	1369

BENCH MARK #1: USGS BRASS PLUG 28" S. & 530' W. OF CENTERLINE INTERSECTION OF CAPRI & PANNEE. ELEV. = 1368.25 NGVD
 BENCH MARK #2: CITY OF WICHITA STD. DISC. 20.8" W. & 54.3" S. OF CENTERLINE INTERSECTION DALTON & PANNEE. ELEV. = 1378.60

**Brentwood South Addition
FINAL PLAT
WICHITA, SEDGWICK COUNTY, KANSAS**

Ruggles & Bohm, P.A.
Engineering, Surveying, Land Planning

924 North Main
Wichita, Kansas 67203
www.rbkansas.com

(316) 264-8008
(316) 264-4621 fax
E-mail: info@rbkansas.com

DESIGN: KWL
DRAWN: RLS
REVIEW: [blank]
UTILITY: [blank]

PROJECT NUMBER: 472-84270
DATE: Sept. 13, 2009

NO. 30
SHEET
OF
30