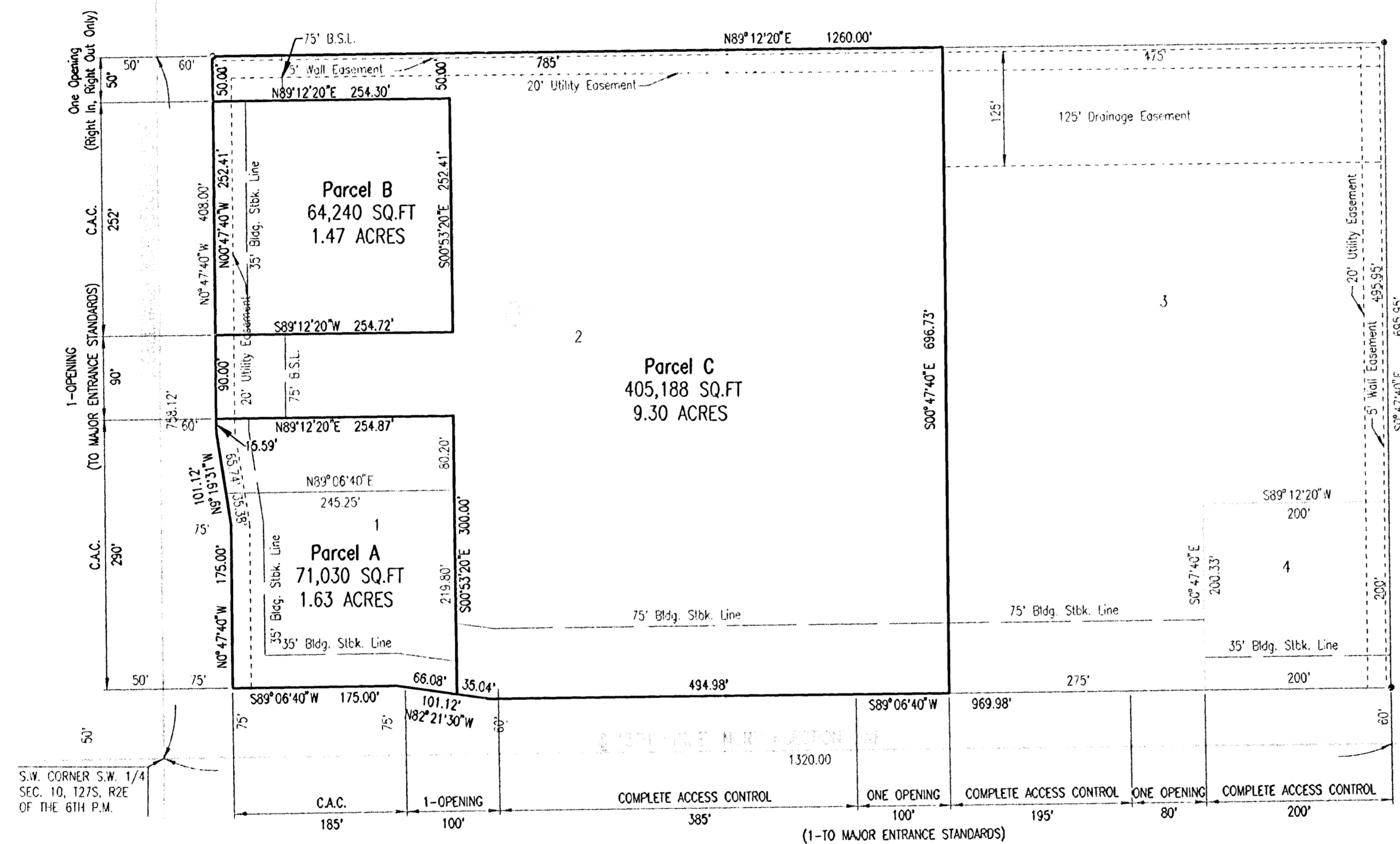
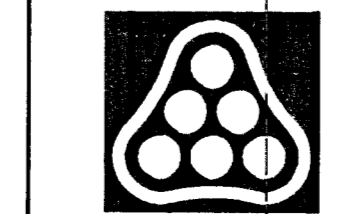


LOT SPLIT

LOT 1 AND 2, BLOCK 1, DILLON 12TH ADDITION TO WICHITA, SEDGWICK COUNTY, KANSAS.



Sheet 12 of 2005 11:51:10 PM by JLN
 Plot Scale 1"=100' 12-20-2005 4:25:45 PM by JLN
 CA 12005 05624 05624-000-C-Plot 1155.rvt



No.	Revision	By	Date
LATERAL 5, MAIN 10 OF THE FOUR MILE CREEK SEWER PLAT (DILLON 12TH ADDITION LOT SPLIT) JAMES L. ARMOUR, P.E. - CITY ENGINEER CITY OF WICHITA PROJECT NO. 468-84124			
Professional Engineering Consultants, P.A. 303 S. TOPEKA • WICHITA, KANSAS 67202 316-262-2691 • FAX 316-262-3003			
Designed by	MDK	Job No.	35-05624-042
Drawn by		Date	November 2005
			Sht. 3 of 14