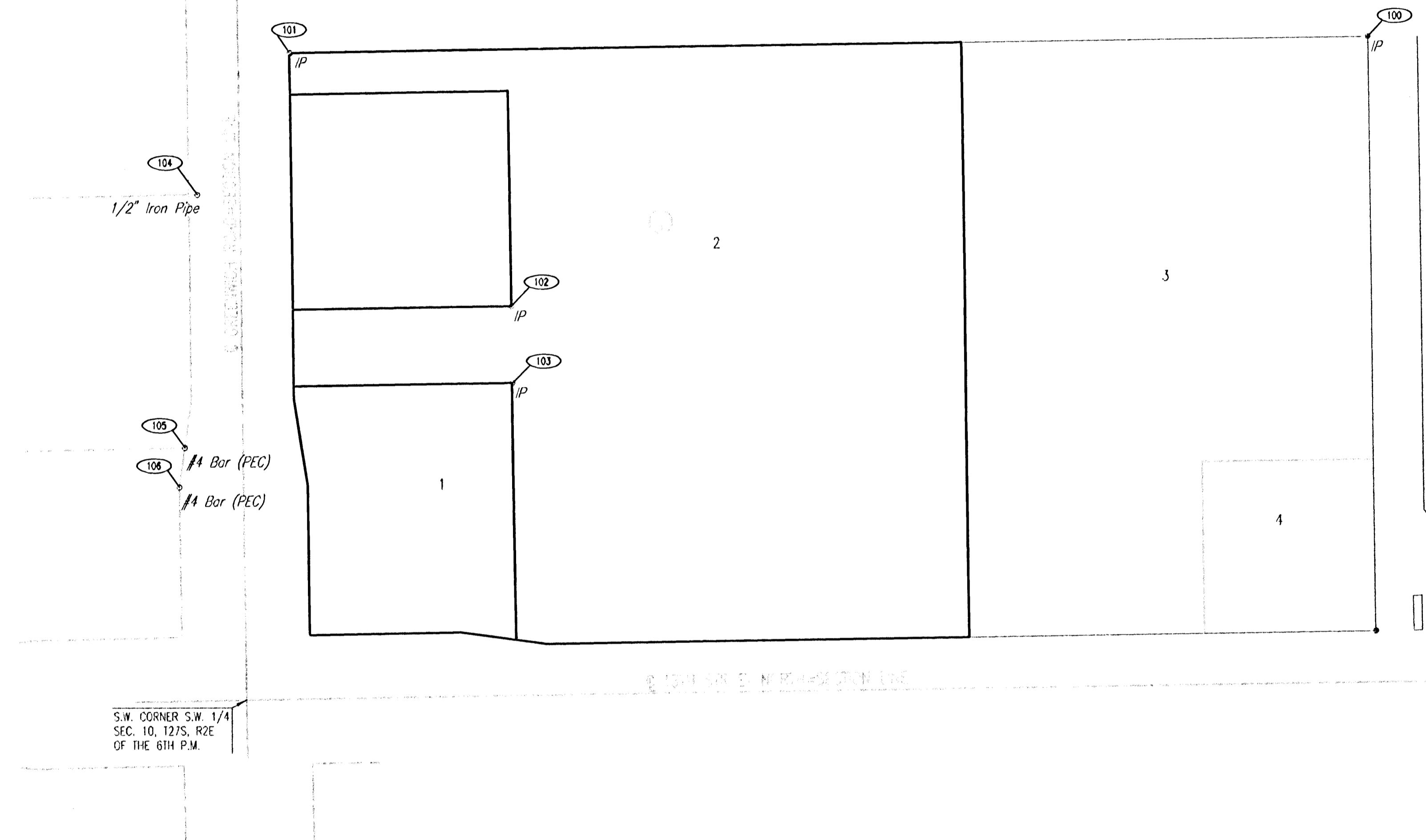


LOT SPLIT

LOT 1 AND 2, BLOCK 1, DILLON 12TH ADDITION TO WICHITA, SEDGWICK COUNTY, KANSAS.



COORDINATE LIST		
POINT	NORTH	EAST
100	1,695,253.0865	1,687,599.5998
101	1,695,235.5064	1,686,339.9300
102	1,694,936.7368	1,686,598.8349
103	1,694,846.6488	1,686,600.3017
104	1,695,068.3089	1,686,232.0400
105	1,694,771.5566	1,686,218.1198
106	1,694,725.4153	1,686,211.8388

⊙ = COORDINATE POINT NO.

Saved: 11-17-2005 12:16:12 PM by CSL
 Plot Scale: 1:100 12-09-2005 3:56:39 PM by JLN
 C:\2005\05624\05624-000-C-Pro\Coords

No.	Revision	By	Date
LATERAL 5, MAIN 10 OF THE FOUR MILE CREEK SEWER PROJECT COORDINATES JAMES L. ARMOUR, P.E. - CITY ENGINEER CITY OF WICHITA PROJECT NO. 468-84124			
Professional Engineering Consultants, P.A. 303 S. TOPEKA • WICHITA, KANSAS 67202 316-262-2691 • FAX 316-262-3003			
Designed by	MDK	Job No.	35-05624-042
Drawn by		Date	November 2005
			SH. 4 of 14

