

Benchmarks:

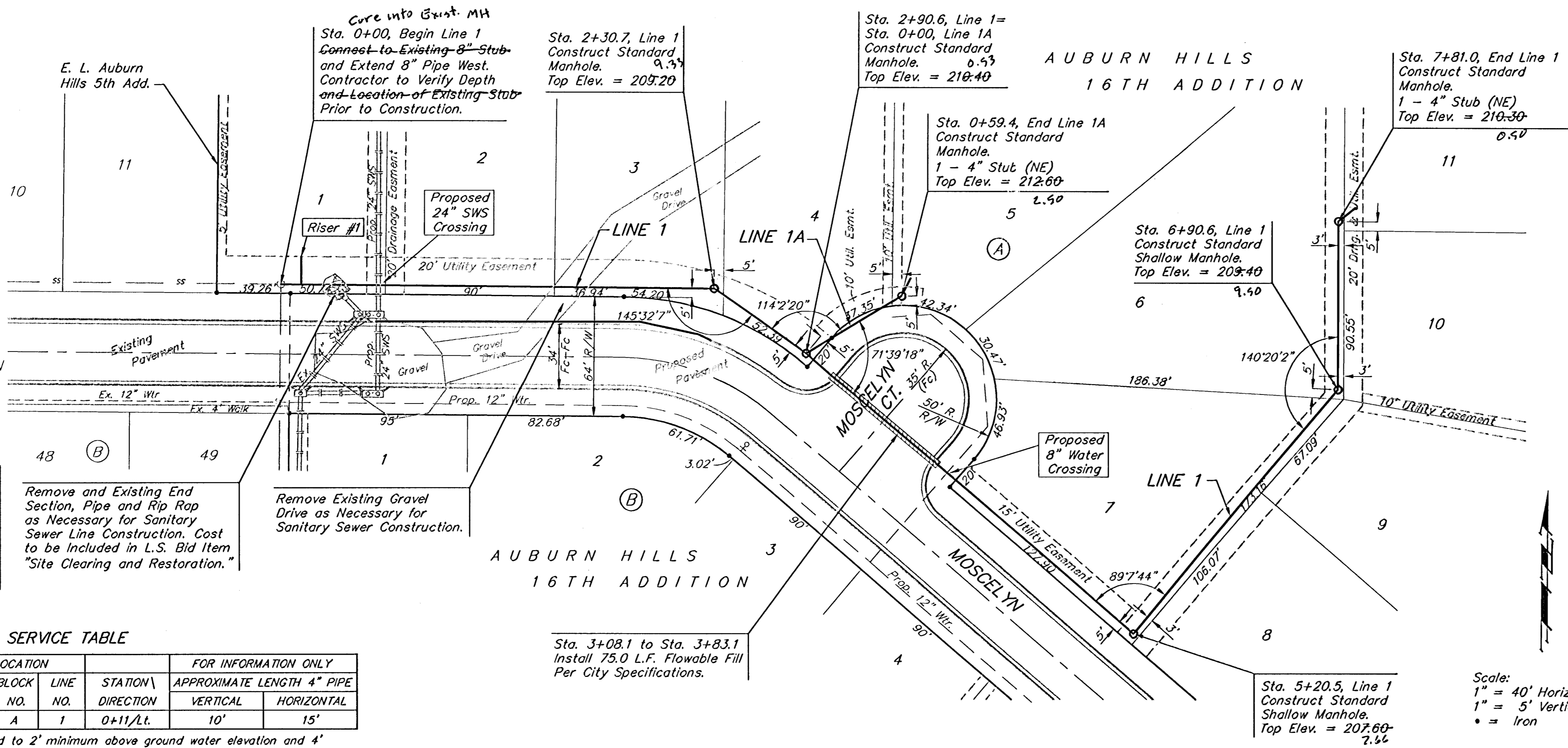
"C" Cut on Top of Curb at West Line of Lot 7, Block A, Auburn Hills 5th Addition. Elevation = 207.73 (City Datum)

Disc in Back of Curb, North of Front Corner Common to Lots 23 and 24, Block D, Auburn Hills 12th Addition. Elevation = 191.84 (City Datum)

"C" Cut on Center of Catch Basin North of Lot Corner Common to Lots 1 and 15, Block B, Auburn Hills 14th Addition. Elevation = 193.65 (City Datum)

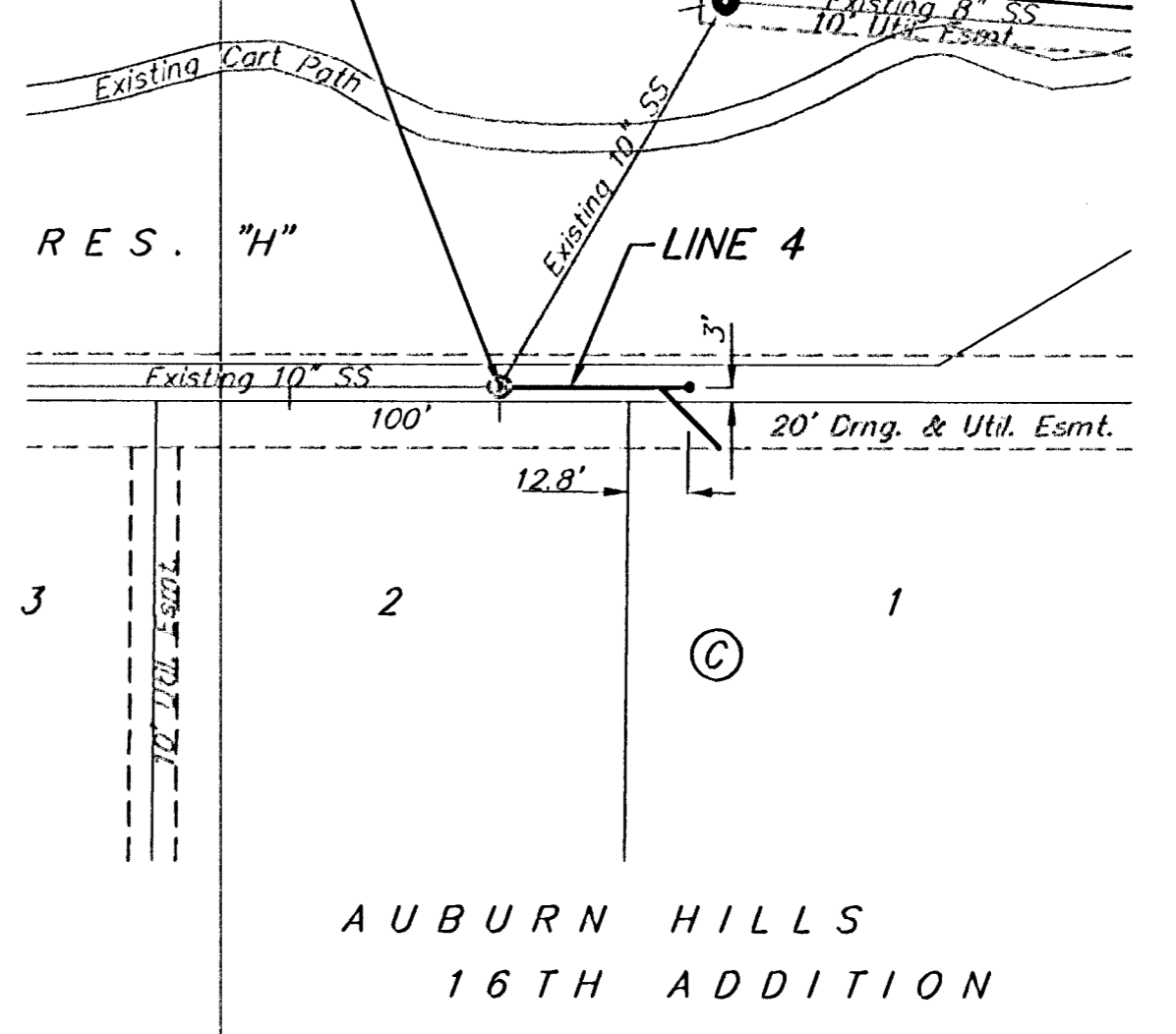
AUBURN HILLS 5TH ADDITION

The contractor shall be required to backfill trench with sand from Sta. 0+00 to Sta. 5+20.5, Line 1 and from Sta. 0+00 to Sta. 0+59.4, Line 1A excluding locations where flowable fill is called out. Sand Backfill shall be bid per L.F. as "Sand Backfill Jetted and Vibrated".



Cost of Converting Existing Manhole and 8\" Stub to Outside Drop shall be incidental to L.F. 8\" Pipe.

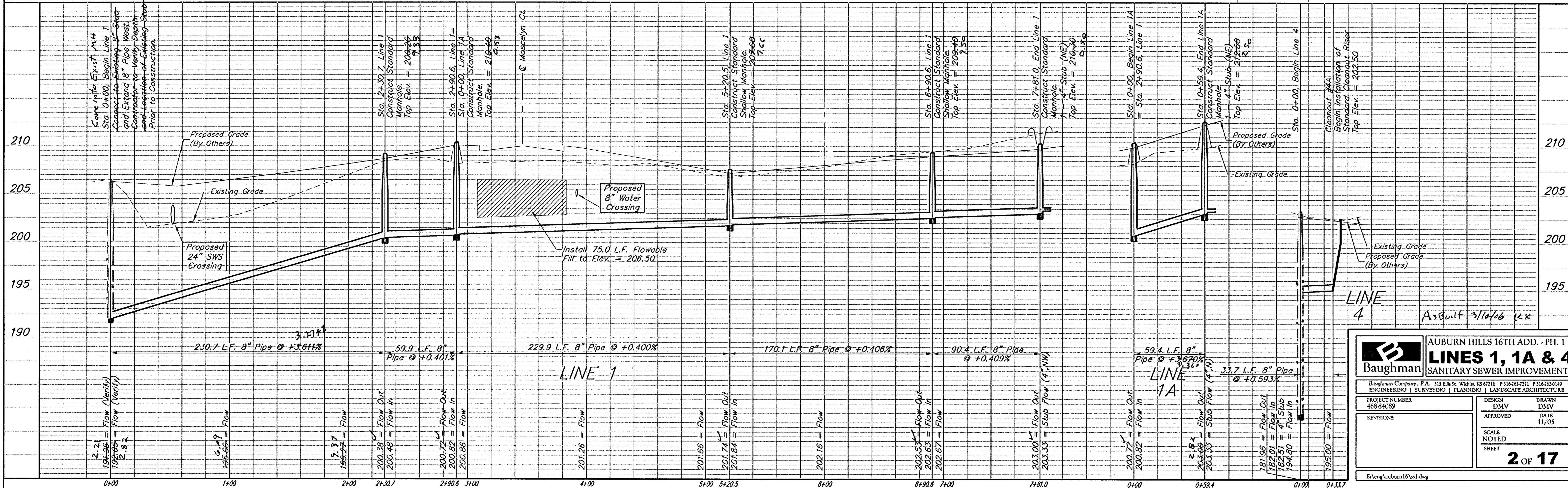
Sta. 0+00, Line 4 Convert Existing Manhole and 8\" Stub to Outside Drop and Extend 8\" Pipe Northwest. Install Std. 8\" Cleanout Assy. w/ 33.7 L.F. 8\" Pipe



SEWER SERVICE TABLE

NUMBER	TYPE	LOCATION			STATION	DIRECTION	FOR INFORMATION ONLY	
		LOT NO.	BLOCK NO.	LINE NO.			APPROXIMATE LENGTH 4\" PIPE	VERTICAL
1	8\" x 4\" Tee Saddle	1	A	1	0+11/Lt.		10'	15'

NOTE: Vertical Riser Pipe shall be extended to 2' minimum above ground water elevation and 4' maximum below proposed ground elevation.



Baughman AUBURN HILLS 16TH ADD. - PH. 1
LINES 1, 1A & 4
 SANITARY SEWER IMPROVEMENTS

PROJECT NUMBER: 468-9409
 DESIGN: DMV
 DRAWN: DMV
 APPROVED: DATE 11/05
 SCALE: NOTED
 SHEET: 2 OF 17

Revisions:
 1. 11/05 - Initial Design
 2. 11/05 - Final Design