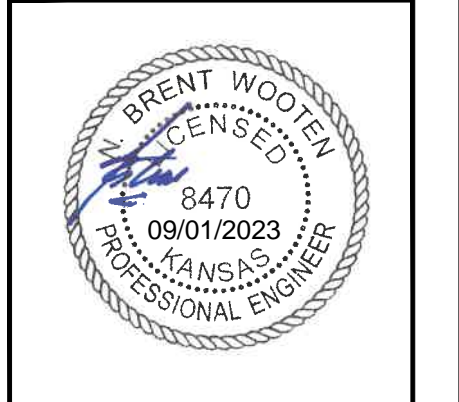
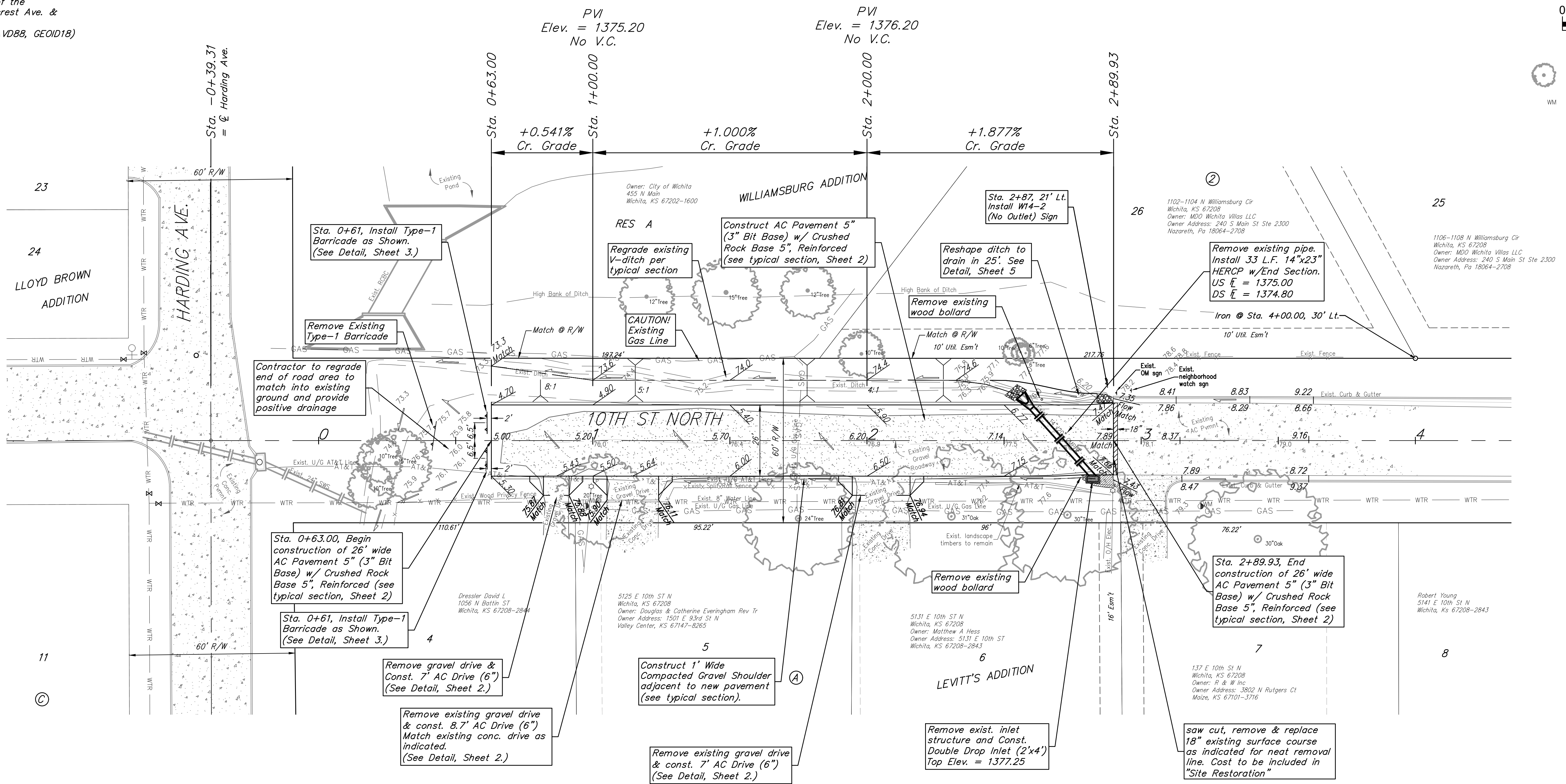
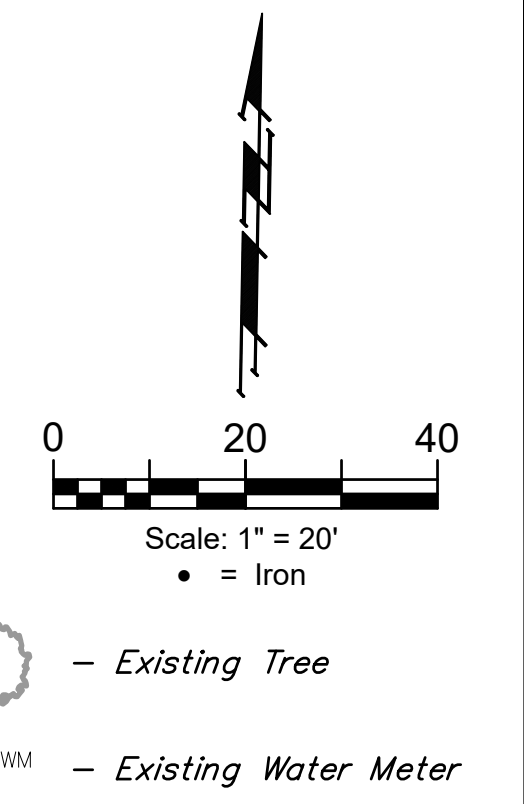


BENCHMARK #1
 Chiseled square in top center of south headwall of RCB structure located 69± E of \varnothing of Harding Ave. & 34' N of \varnothing of 10th ST North
 Elev. = 1377.10 (NAVD88)

BENCHMARK #2
 Square cut set in top curb. North side of 10th ST N. Approx. 256' West of the intersection of Pinecrest Ave. & 10th St N.
 Elev. = 1379.33 (NAVD88, GEOID18)



BAUGHMAN COMPANY

315 Ellis St.
 Wichita, KS 67211
 316-262-7271
 BaughmanCo.com

10TH ST NORTH

Paving Improvements
 PROJECT NUMBER:
 472-2023-085851
 DESIGN: NBW DRAWN: JAK
 DATE: Apr. 24, 2023
 SHEET 4 OF 13

File: E:\Projects\Poplar, Lilac & 10th Street\22-11-E373\Engineering\10th Street MSTR PLANS - 10th St.dwg