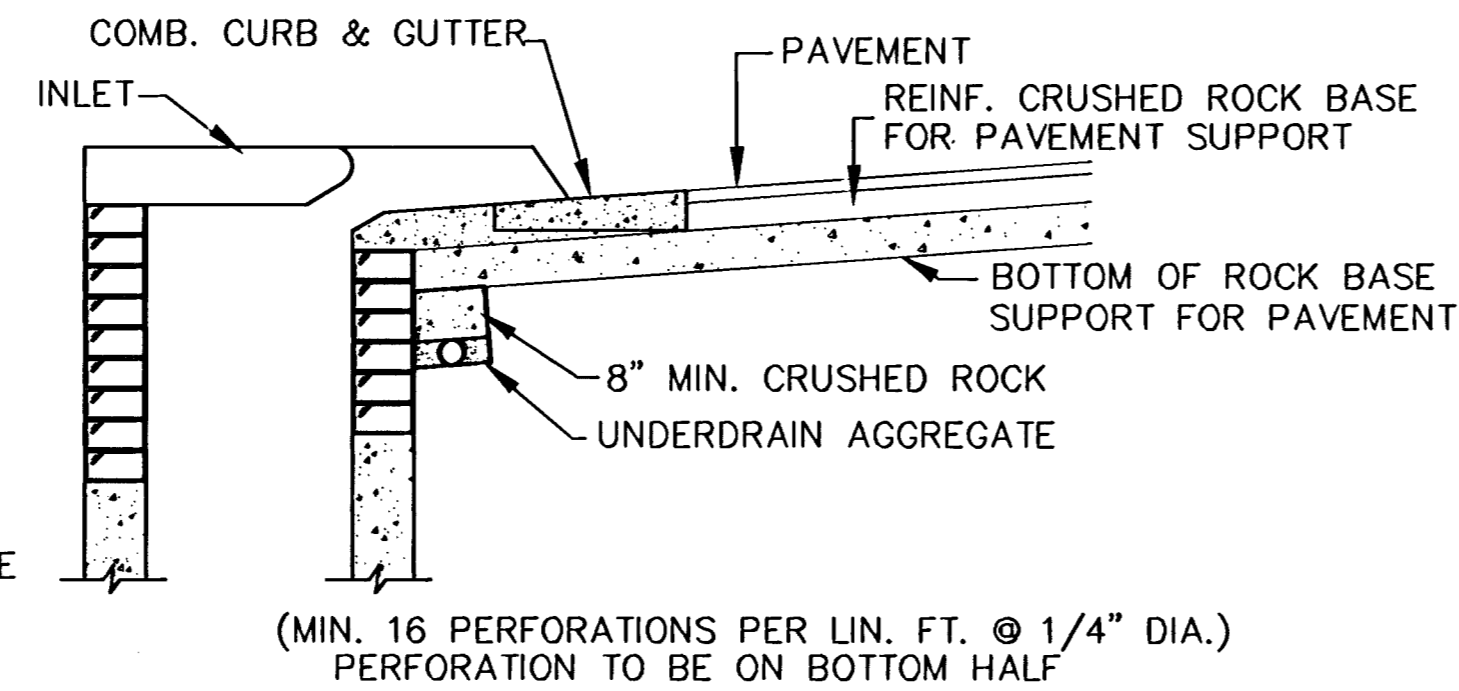


\* UNDERDRAIN AGGREGATE PERCENT OF AGGREGATE RETAINED

1"	0
3/4"	0 to 10
3/8"	45 to 80
#4	90 to 100
#8	95 to 100

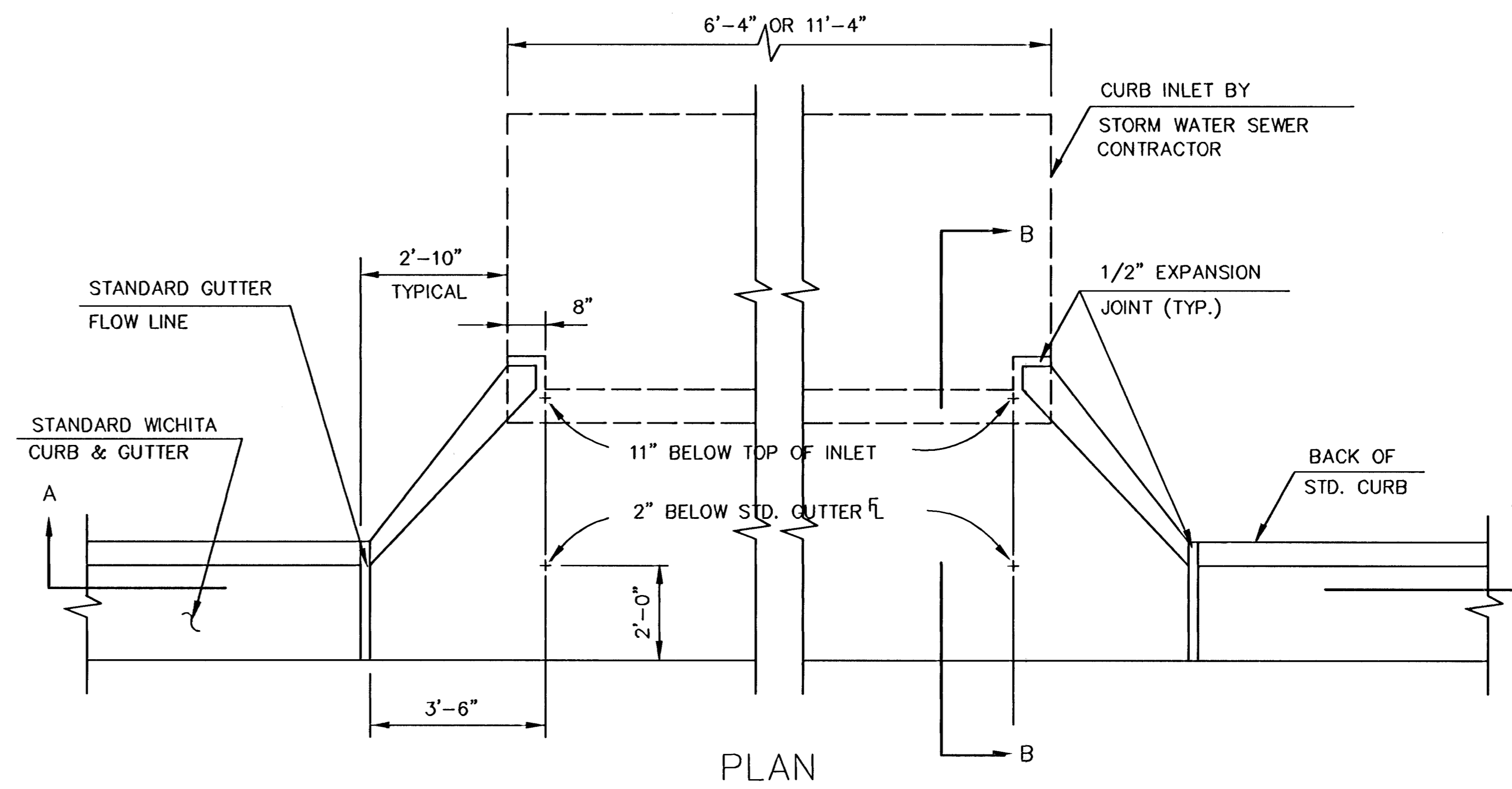
ROCK QUALITY SHALL CONFORM TO THE REQUIREMENTS SPECIFIED BY K.D.O.T. 1990 EDITION STANDARD SPECIFICATION SUBSECTION 1102 FOR DURABILITY CLASS 1.



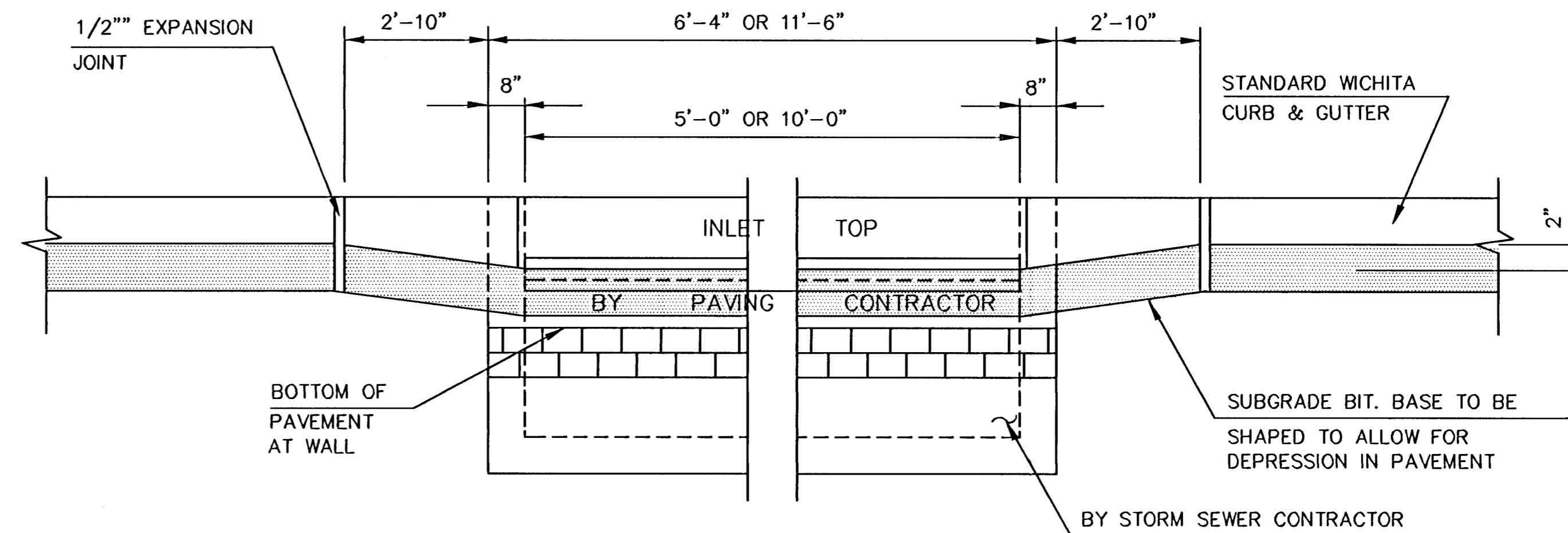
SECTION A-A

NOTE: PLACE 4" PVC PERFORATED PIPE AT ALL DRAINAGE SUMP LOCATIONS. COST OF UNDERDRAIN SYSTEM TO BE INCIDENTAL TO THE REINFORCED CRUSHED ROCK SUBGRADE. INLET TYPE MAY VARY FROM THAT SHOWN.

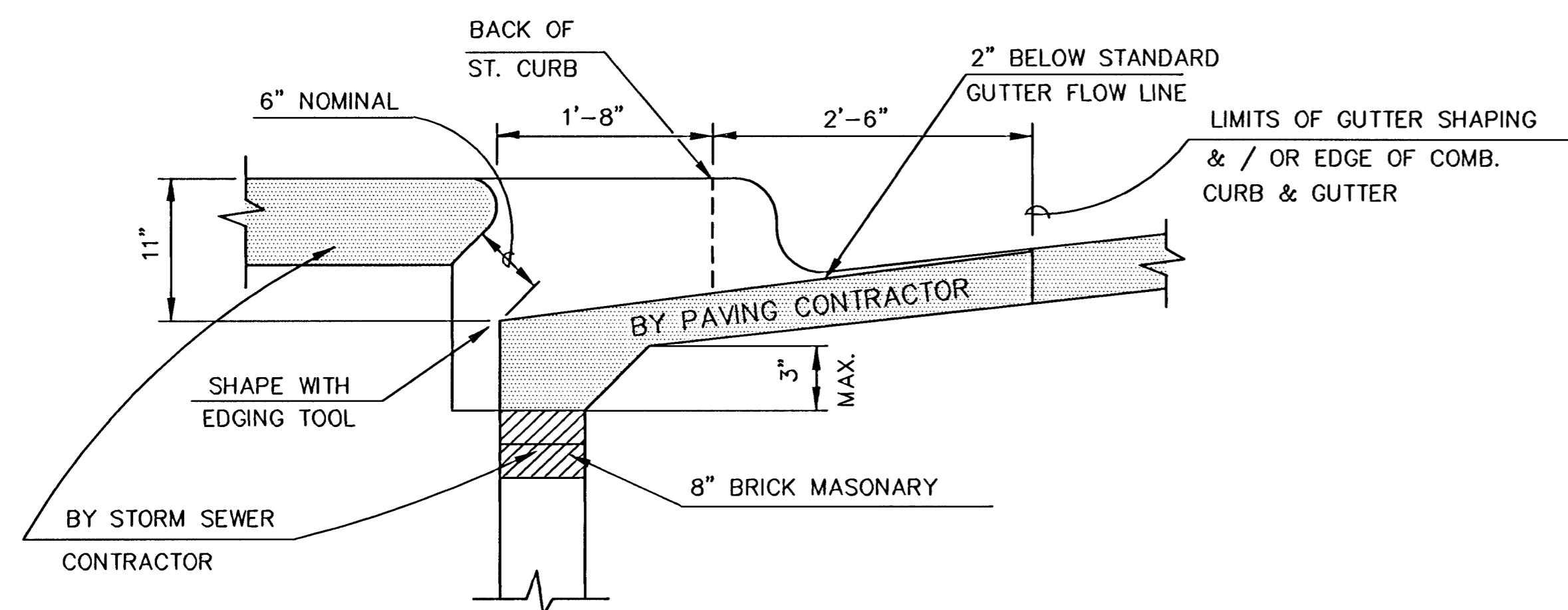
## PAVEMENT UNDERDRAIN DETAIL



PLAN



SECTION A-A



SECTION B-B

## TYPE 1A INLET HOOKUP

( BY PAVING CONTRACTOR )

### GENERAL NOTES

- USE THE CONCRETE MIX SPECIFIED FOR CITY OF WICHITA CONCRETE PAVEMENT. ALL EXPOSED EDGES SHALL BE FINISHED WITH AN EDGING TOOL.
- TYPE 1A INLET HOOKUP WILL BE PAID EACH REGARDLESS OF SIZE.
- ADDITIONAL CURB & GUTTER CONSTRUCTION NECESSARY TO CONNECT SET BACK INLET TO PAVEMENT WILL BE PAID FOR AT THE UNIT PRICE BID FOR EACH INLET HOOKUP. (BY PAVING CONTRACTOR)

H:\CIVIL\02121\4TH-ADDITION\PAV\02121ED3.DWG

**MKEC**  
ENGINEERING  
CONSULTANTS, INC.

REED'S COVE FOURTH ADDITION  
PROJECT NAME

INLET HOOK UP & UNDERDRAIN DETAILS  
SHEET TITLE

411 N. WEBB ROAD  
WICHITA, K.S. 67206  
316-684-9600

SRS  
DESIGN BY:

BFL  
DRAWN BY:

GJA  
CHECKED BY:

MARCH 2006  
DATE

02121  
JOB NO.

4 / 33  
SHEET/OF