

PAVING STREETS & INCIDENTAL DRAINAGE
REED'S COVE 4TH ADDITION
WICHITA, KANSAS

**BUBBLE
MAP**

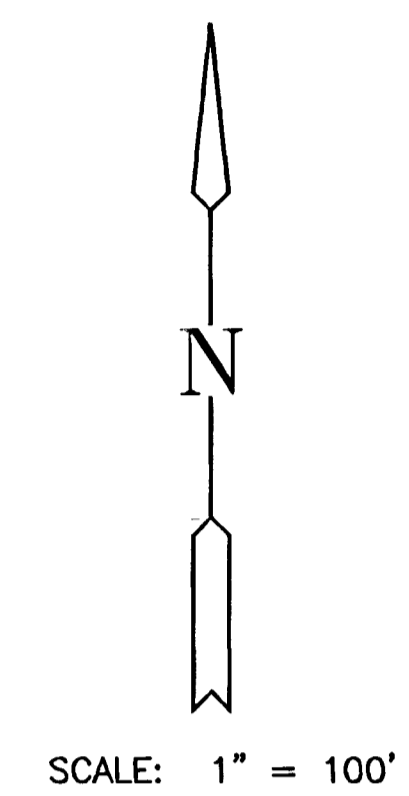
SHEET TITLE
02121
PROJECT NUMBER

DESIGN BY *SRS*
DRAWN BY *BFL*
CHECKED BY *GJA*

ISSUED
MARCH 2006
REVISED

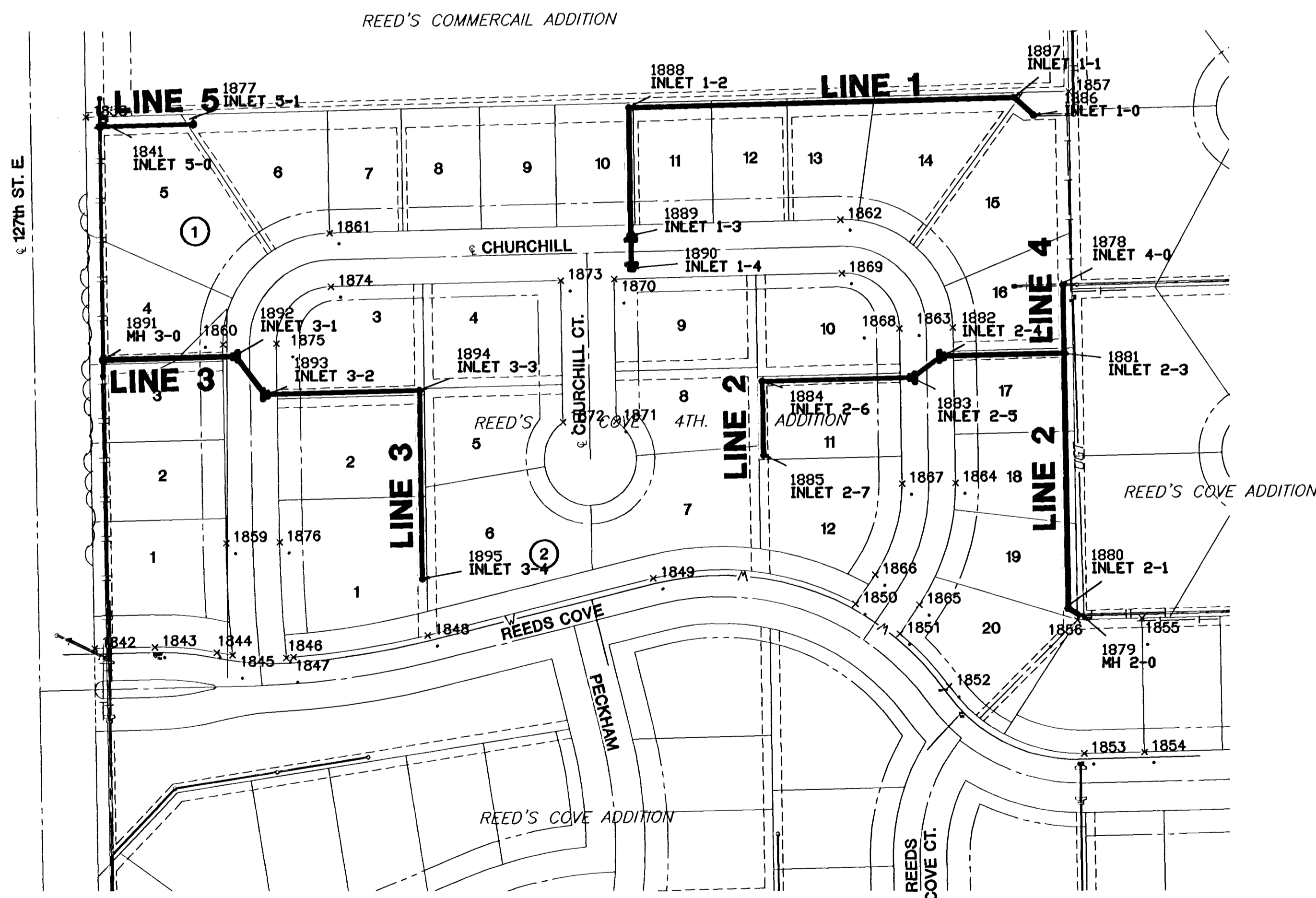
SHEET NO.

21 of 33



STORM WATER SEWER POINTS

Point #	Northing	Easting	Desc.
1841	1698980.93	1691600.92	INLET 5-0
1877	1698983.39	1691698.67	INLET 5-1
1878	1698803.13	1692643.70	INLET 4-0
1879	1698445.79	1692667.07	MH 2-0
1880	1698453.18	1692648.20	INLET 2-1
1881	1698729.29	1692644.81	INLET 2-3
1882	1698726.08	1692516.51	INLET 2-4
1883	1698702.99	1692481.52	INLET 2-5
1884	1698698.97	1692320.23	INLET 2-6
1885	1698618.96	1692321.43	INLET 2-7
1886	1698986.46	1692614.86	INLET 1-0
1887	1699005.93	1692593.61	INLET 1-1
1888	1698995.42	1692175.55	INLET 1-2
1889	1698857.08	1692177.65	INLET 1-3
1890	1698821.75	1692178.54	INLET 1-4
1891	1698722.85	1691604.79	MH 3-0
1892	1698726.39	1691746.09	INLET 3-1
1893	1698685.42	1691782.04	INLET 3-2
1894	1698689.58	1691948.11	INLET 3-3
1895	1698485.86	1691950.84	INLET 3-4



PLAT IRONS

Point No.	Northing	Easting	Description
1842	1698410.49	1691594.48	PI
1843	1698412.05	1691660.43	PI
1844	1698406.03	1691727.70	PI
1845	1698403.09	1691744.45	PI
1846	1698400.30	1691803.00	PI
1847	1698400.80	1691810.79	PI
1848	1698424.53	1691956.65	PI
1849	1698486.12	1692201.69	PI
1850	1698458.22	1692421.27	PI
1851	1698425.73	1692469.32	PI
1852	1698368.63	1692522.71	PI
1853	1698295.80	1692669.19	PI
1854	1698297.45	1692734.55	PI
1855	1698442.43	1692732.11	PI
1856	1698440.66	1692662.14	PI
1857	1699012.44	1692653.56	PI
1858	1698985.55	1691585.85	PI
1859	1698524.58	1691737.78	PI
1860	1698739.43	1691734.56	PI
1861	1698860.17	1691850.55	PI
1862	1698874.15	1692405.40	PI
1863	1698756.97	1692527.38	PI
1864	1698588.96	1692529.90	PI
1865	1698457.26	1692490.64	PI
1866	1698489.75	1692442.59	PI
1867	1698588.09	1692471.91	PI
1868	1698756.10	1692469.39	PI
1869	1698816.17	1692406.86	PI
1870	1698809.94	1692159.55	PI
1871	1698655.95	1692161.86	PI
1872	1698655.08	1692103.87	PI
1873	1698808.48	1692101.56	PI
1874	1698802.19	1691852.01	PI
1875	1698740.30	1691792.55	PI
1876	1698525.44	1691795.78	PI

PLATTED: Tuesday, March 14, 2006 @ 08:51PM

H:\CIVIL\02121\4th Addition\SW\02121BMAP