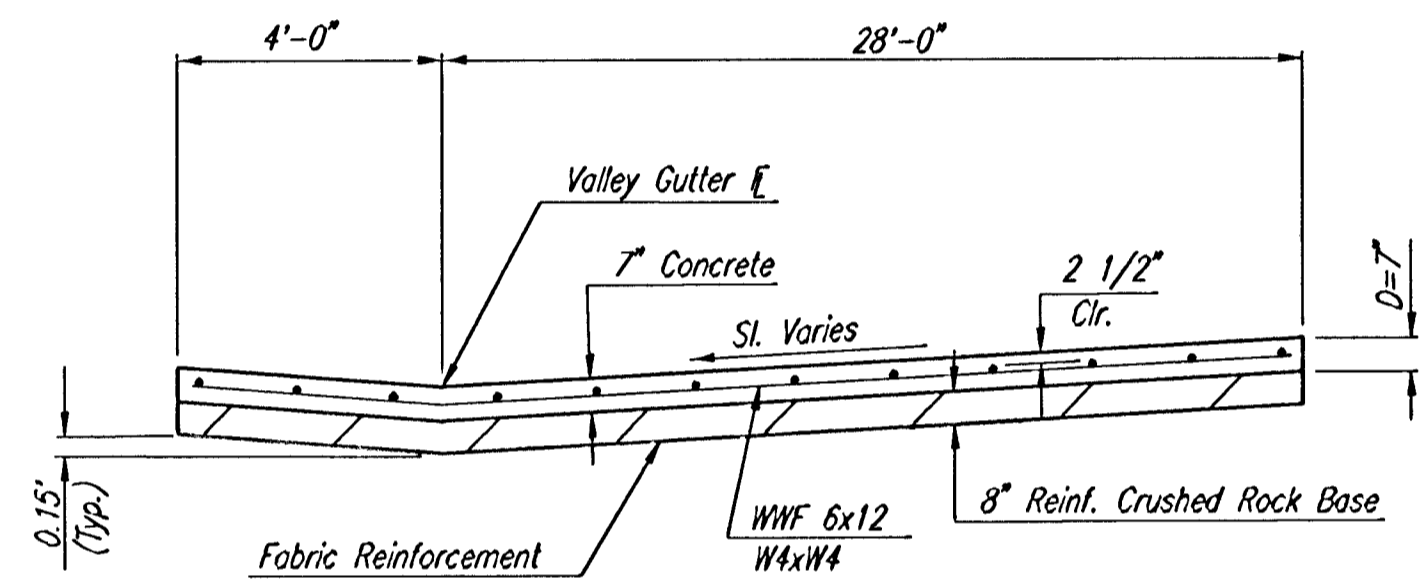


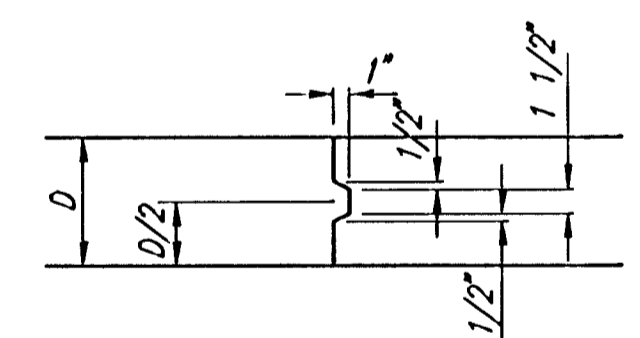
PLAN  
REINFORCED VALLEY GUTTER



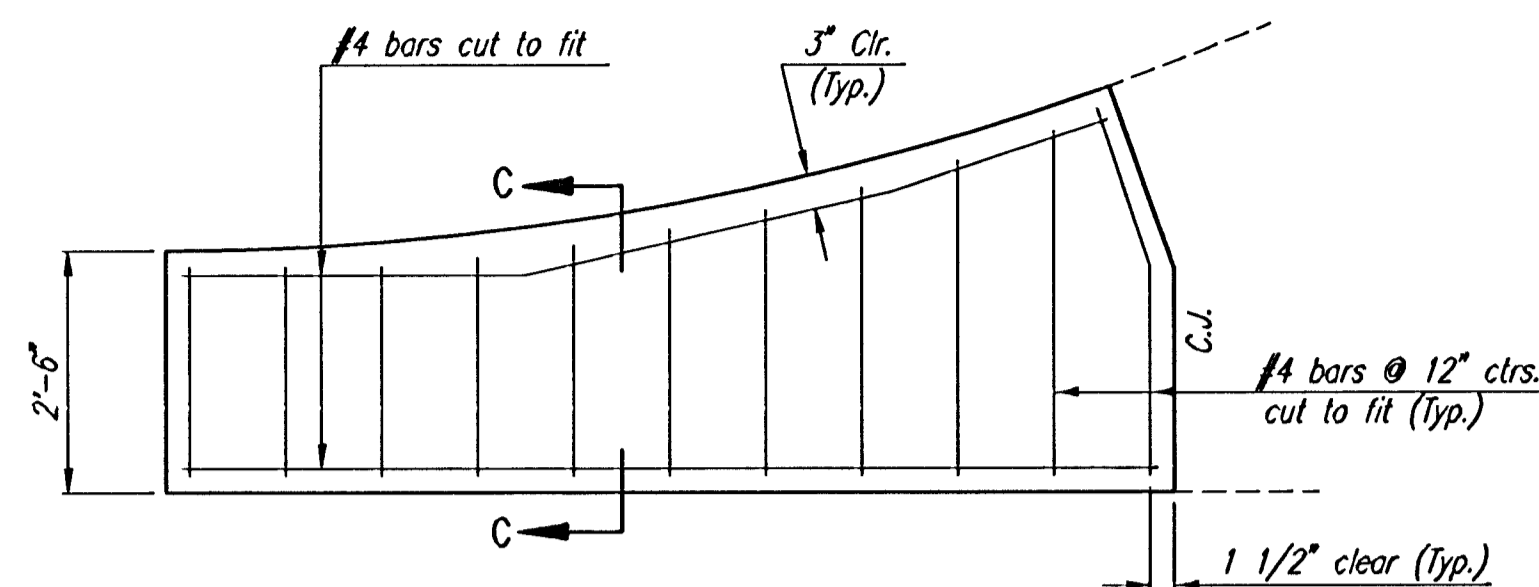
SECTION A-A

NOTE: OMIT REINFORCING MESH AT ALL JOINTS

NOTE: ALL CONCRETE VALLEY GUTTER REINFORCEMENT SHALL BE ADEQUATELY SUPPORTED BY BAR CHAIRS IN THE REQUIRED POSITION UNLESS APPROVED OTHERWISE BY THE ENGINEER.

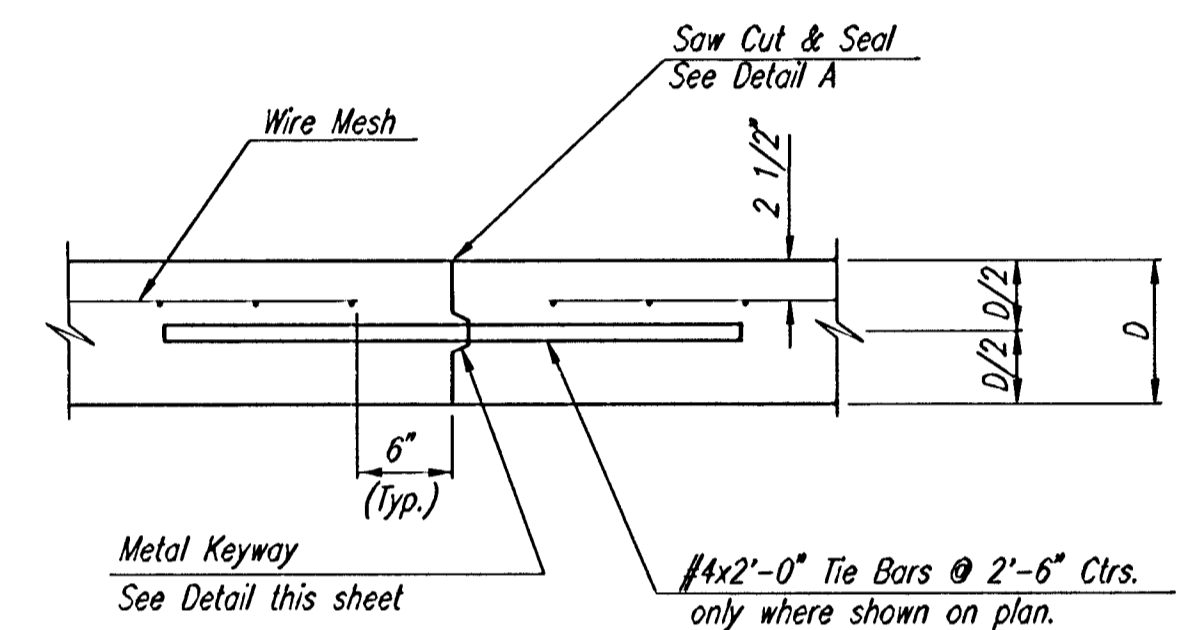


KEYWAY DETAIL

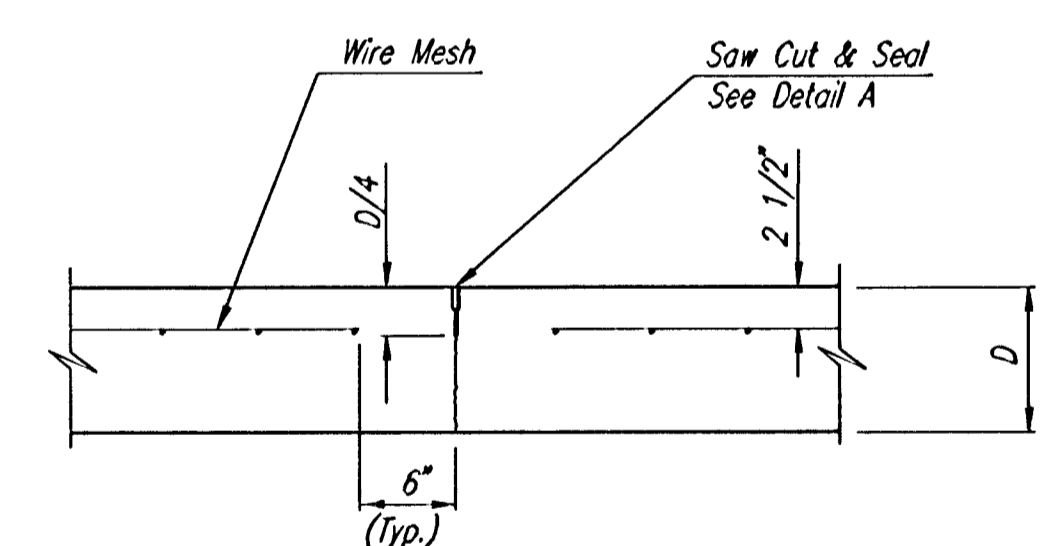


WING REINFORCING DETAIL

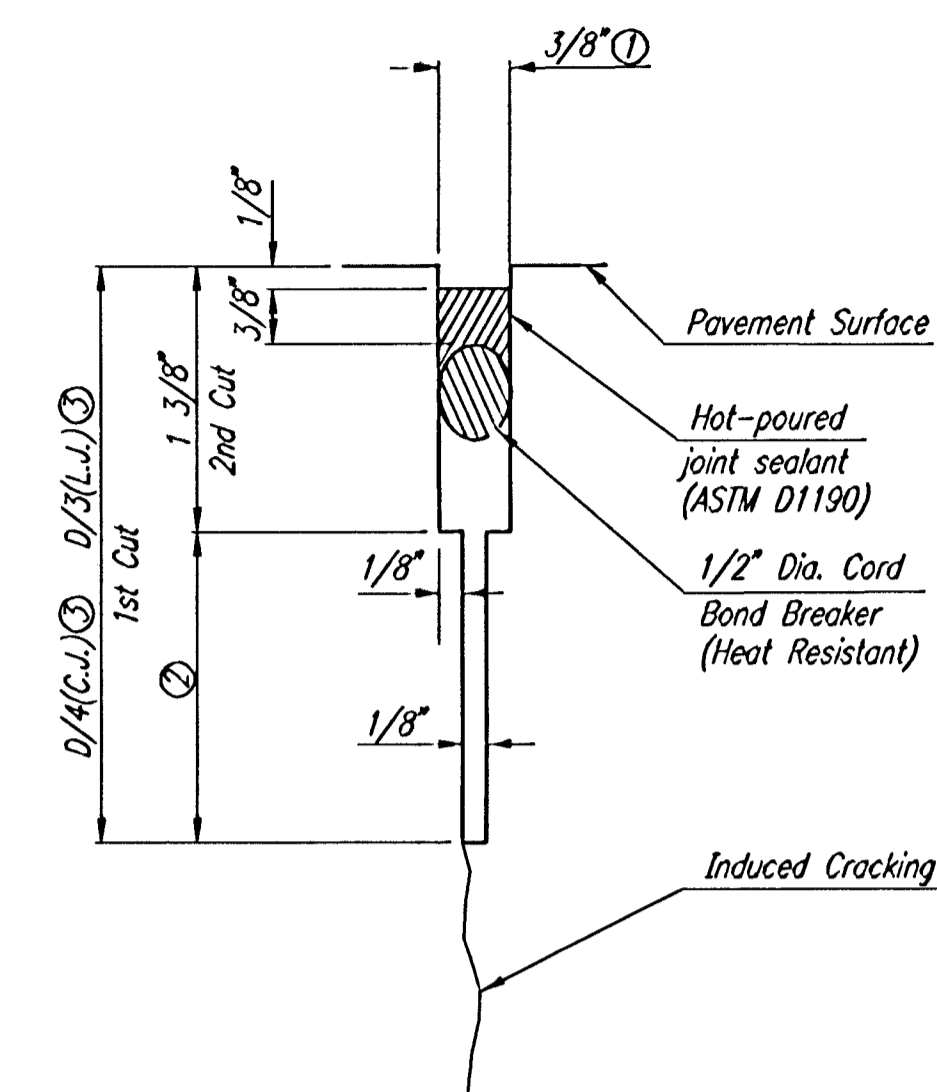
NOTE: OMIT WIRE FABRIC REINFORCING IN THIS SECTION.



LONGITUDINAL CONSTRUCTION JOINT DETAIL  
REINFORCED PAVEMENT  
(TRANSVERSE SECTION)  
(ALTERNATE L.J.)

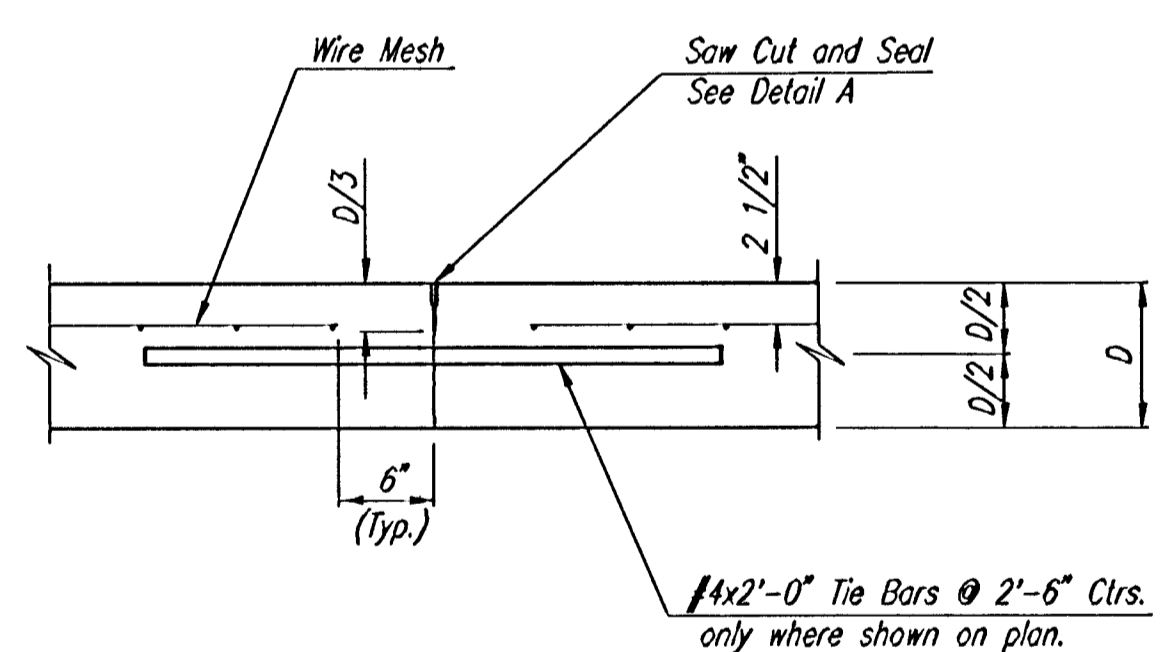


CONTRACTION JOINT DETAIL  
REINFORCED PAVEMENT  
(C.J.)

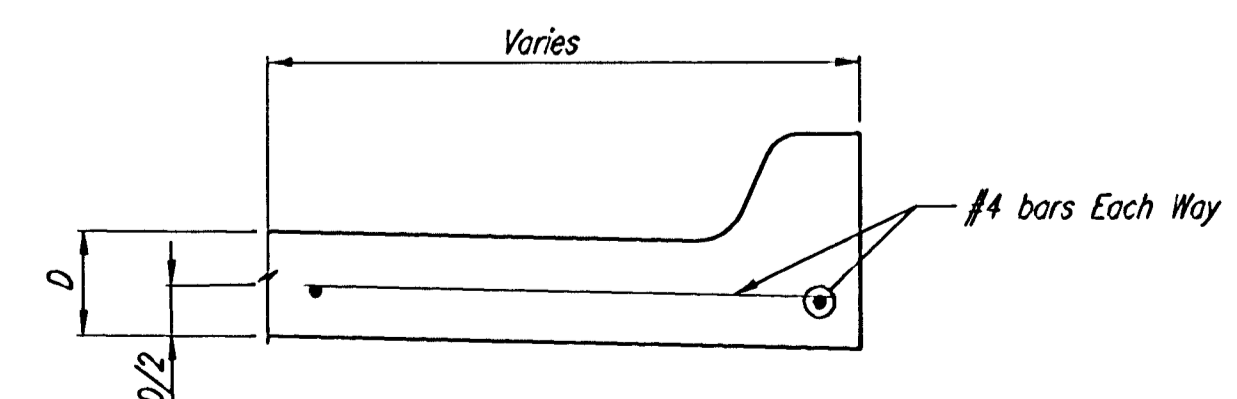


DETAIL A

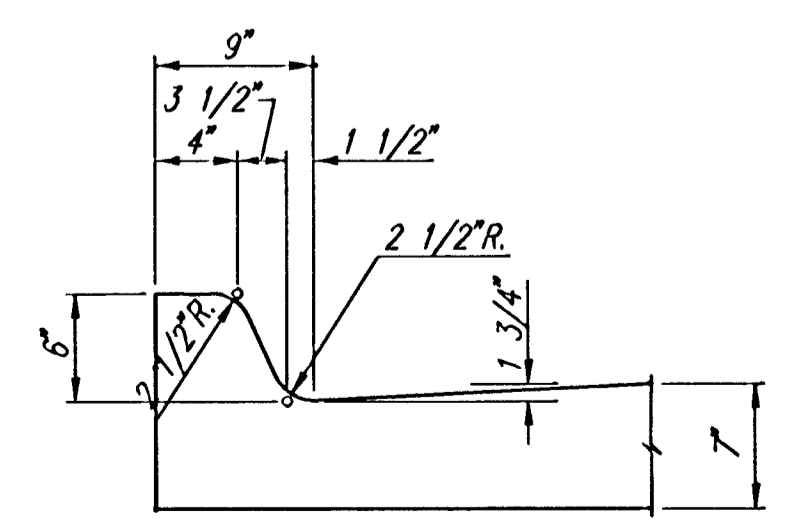
- To be accomplished in 2 cuts for Longitudinal Joints and Contraction Joints. Initial cut to be 1/8" wide.
- Eliminate bottom of cut when metal keyway is used as part of Longitudinal or Transverse Construction Joint and at Doweled Construction Joint Locations.
- 1 1/2" Minimum



LONGITUDINAL JOINT DETAIL  
REINFORCED PAVEMENT  
(TRANSVERSE SECTION)  
(L.J.)



SECTION C-C



DETAIL B

Save: 02-13-2006 11:40:20 AM by BJS  
Plot Scale: 1:10 02-13-2006 2:01:41 PM by JMU  
C:\2005\05548\000\05548-000-C-ValleyGutterDetail



No.	Revision	By	Date
	CROSS POINTE-PHASE 1 21ST ST. N. DECEL LANE		
<b>VALLEY GUTTER DETAILS</b>			
JAMES L. ARMOUR, P.E. - CITY ENGINEER CITY OF WICHITA PROJECT NO. 472-84229			
<b>Professional Engineering Consultants, P.A.</b>			
303 S. TOPEKA • WICHITA, KANSAS 67202 316-262-2691 • FAX 316-262-3003			
Designed by	BDB, BMM	Job No.	35-05548-000
Drawn by	BMM, BJS	Date	October 2005
			Sheet 6 of 12