

N.W. Cor. NW1/4
Sec. 10, T27S, R2E
Found Chiseled "+"
In Concrete

N.E. Cor. NW 1/4
Sec. 10, T27S, 2E

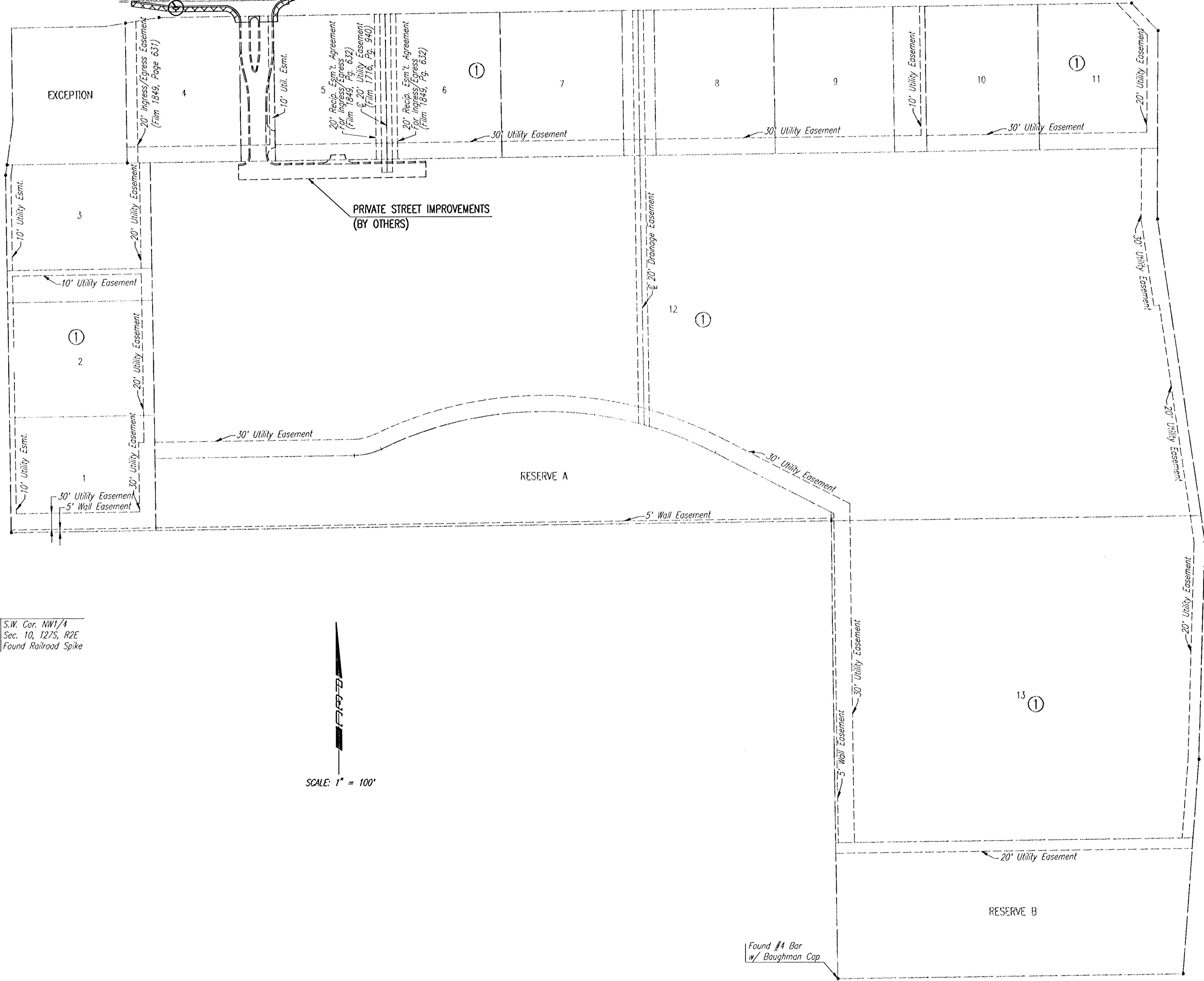
Curb Inlet Protection
See Detail Sheet No. 10.

Back of Curb Protection
See Detail Sheet No. 9.

21ST STREET NORTH

GREENWICH ROAD

K-96 HIGHWAY
JOHN SEDGWICK EXPRESSWAY RIGHT-OF-WAY
(NORTHEAST EXPRESSWAY)
TRACT # 8 RESOLUTION # 01-1387, FILM 6821, PAGE 637

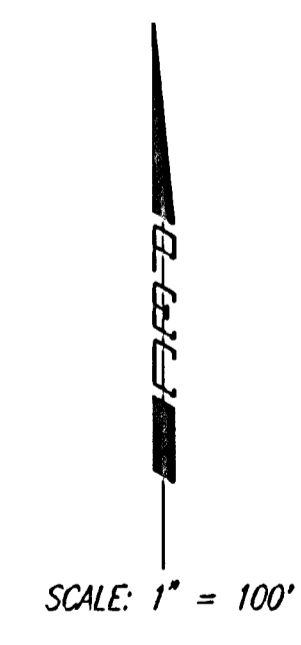


GENERAL NOTES

1. THE EROSION CONTROL DEVICES SHOWN ON THIS SHEET ARE CONSIDERED MINIMUM STANDARDS. WHENEVER SEDIMENT ENTERS THE STREETS, STORM SEWERS, DITCHES, OR PONDS, CONTRACTOR WILL INSTALL ADDITIONAL DEVICES, AS NEEDED, TO CORRECT THE PROBLEM.
2. THE EROSION CONTROL DEVICES SHOWN HEREON MUST BE IN PLACE AT ALL TIMES DURING CONSTRUCTION UNTIL SUCH TIME AS THE SITE IS REESTABLISHED WITH PAVING OR GRASS. TEMPORARY OR PERMANENT SEED AND MULCH WILL BE INSTALLED WHEN EARTHWORK ACTIVITIES CEASE IN AN AREA FOR 14 DAYS OR MORE.
3. BACK OF CURB PROTECTION: AS SHOWN ON CITY STANDARD DETAILS. THESE DEVICES MUST REMAIN IN PLACE UNTIL THE AREA BETWEEN THE CURB AND RIGHT-OF-WAY LINE HAS BEEN PERMANENTLY STABILIZED.
4. ANY MUD INADVERTENTLY TRACKED ONTO ANY STREET WILL BE CLEANED UP BY THE CONTRACTOR, AT THE END OF EACH DAY'S WORK.
5. CONTRACTOR TO FURNISH A TRUCK WASH-OUT PIT TO BE PLACED AT A CONVENIENT LOCATION THAT DOES NOT CONFLICT WITH CONSTRUCTION. CONTRACTOR SHALL CLEAN OUT AND BACKFILL PIT PRIOR TO FINAL INSPECTION.

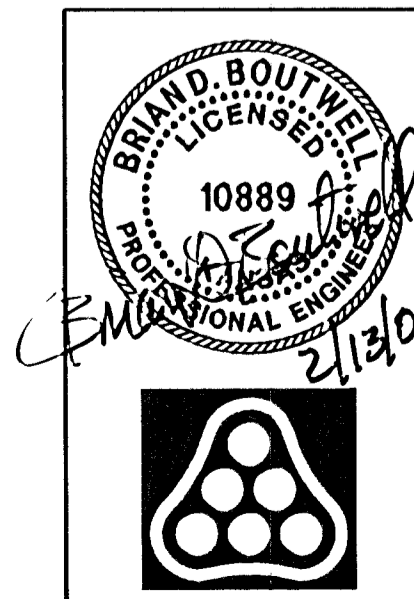
LEGEND

- Curb Inlet Protection
- ▨ Back of Curb Protection



S.W. Cor. NW1/4
Sec. 10, T27S, R2E
Found Railroad Spike

Found #4 Bar
w/ Baughman Cap



No.	Revision	By	Date
CROSS POINTE-PHASE 1 21ST ST. N. DECEL LANE			
EROSION CONTROL (BMP) PLAN			
JAMES L. ARMOUR, P.E. - CITY ENGINEER CITY OF WICHITA PROJECT NO. 472-84229			
Professional Engineering Consultants, P.A.			
303 S. TOPEKA • WICHITA, KANSAS 67202 316-262-2691 • FAX 316-262-3003			
Designed by	BDB, BMM	Job No.	35-05548-000
Drawn by	BMM, BJS	Date	October 2005
			Sheet 8 of 12

Saved 02-13-2006 11:46:34 AM by BJS
 Plot Scale 1:100 02-13-2006 2:03:48 PM by JMU
 C:\2005\05548\000\05548-000-C-EROSION CONTROL