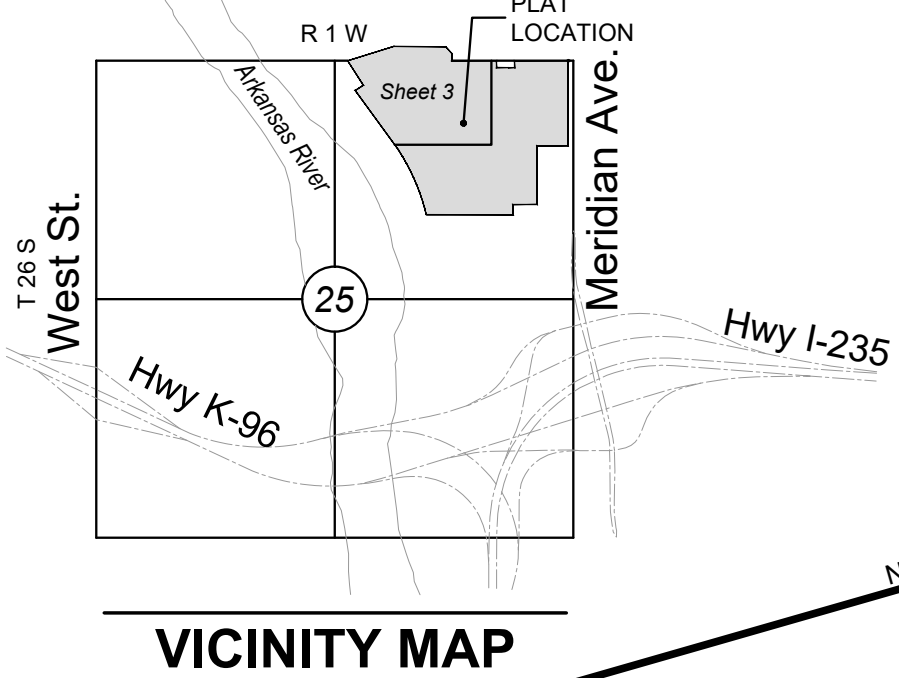


# COURTYARDS AT THE MOORINGS ADDITION

AN ADDITION TO WICHITA, SEDGWICK COUNTY, KANSAS



### CENTERLINE TABLE

| Line # | Length  | Direction   |
|--------|---------|-------------|
| L25    | 36.10'  | S20°43'08"W |
| L26    | 32.61'  | N69°01'46"E |
| L27    | 203.34' | S31°34'54"E |
| L28    | 86.16'  | S31°34'54"E |
| L29    | 111.80' | N21°02'21"W |
| L30    | 57.27'  | N89°21'48"E |
| L31    | 146.50' | S17°24'32"E |
| L32    | 339.04' | S89°21'48"W |
| L34    | 67.79'  | S12°19'08"W |
| L35    | 27.00'  | N45°45'31"W |
| L36    | 7.06'   | N45°45'31"W |
| L37    | 53.88'  | N00°38'12"W |
| L38    | 92.31'  | N00°38'12"W |
| L39    | 656.77' | S89°21'48"W |
| L40    | 25.12'  | S00°38'12"E |

### CENTERLINE CURVE TABLE

| Curve # | Length  | Radius   | Delta      | Chord Direction | Chord Length |
|---------|---------|----------|------------|-----------------|--------------|
| C22     | 582.09' | 800.00'  | 41°41'22"  | N89°52'27"E     | 569.34'      |
| C23     | 189.10' | 600.00'  | 18°03'27"  | N12°00'38"W     | 188.32'      |
| C24     | 266.18' | 400.00'  | 38°07'40"  | S01°39'18"W     | 261.30'      |
| C25     | 110.98' | 400.00'  | 15°53'49"  | S82°41'18"E     | 110.63'      |
| C26     | 20.75'  | 400.00'  | 2°58'19"   | S73°15'14"E     | 20.74'       |
| C27     | 305.82' | 1000.00' | 17°31'20"  | S80°31'45"E     | 304.63'      |
| C28     | 394.16' | 1000.00' | 22°35'01"  | N79°25'04"E     | 391.61'      |
| C29     | 44.52'  | 200.00'  | 12°45'19"  | S25°12'15"E     | 44.43'       |
| C30     | 114.93' | 150.00'  | 43°54'02"  | S09°37'53"E     | 112.14'      |
| C31     | 474.95' | 225.00'  | 120°56'42" | S28°53'27"W     | 391.55'      |
| C32     | 241.78' | 70.00'   | 197°53'53" | S02°50'17"E     | 138.30'      |
| C33     | 117.49' | 150.00'  | 44°52'41"  | N68°11'52"W     | 114.51'      |
| C34     | 118.13' | 150.00'  | 45°07'19"  | N23°11'52"W     | 115.10'      |
| C35     | 142.44' | 400.00'  | 20°24'09"  | N10°50'17"W     | 141.68'      |
| C36     | 117.09' | 400.00'  | 16°46'20"  | S09°01'22"E     | 116.67'      |
| C37     | 148.03' | 100.00'  | 84°48'44"  | S46°57'26"W     | 134.88'      |

### MINIMUM PAD ELEVATIONS LOWEST OPENINGS

| LOTS | BLOCK | ELEVATION<br>NAVD 88 |
|------|-------|----------------------|
| 1-10 | 1     | 1329.4               |
| 1-27 | 2     | 1329.4               |
| 1-5  | 3     | 1329.4               |
| 1-4  | 4     | 1329.4               |
| 1-5  | 5     | 1329.4               |
| 1-8  | 6     | 1329.4               |
| 1-10 | 7     | 1329.4               |
| 1-4  | 8     | 1329.4               |
| 1-5  | 9     | 1329.4               |
| 1    | 10    | 1329.4               |
| 1    | 11    | 1329.4               |

### LEGEND

Date of Survey: 12/20/2021

- Section Corner Monument Found
- Found 3/8" rebar w/ MKEC CLS 39 id. cap or see annotation for type
- Set 3/8" rebar w/ MKEC CLS 39 id. cap
- Benchmark
- (M) = Measured
- (P) = Platted
- (D) = Described
- (CM) = Calculated from Measurement
- (CP) = Calculated from Plat
- (CD) = Calculated from Described
- Drng. = Drainage
- Util. = Utility
- Sdwk. = Sidewalk
- St. = Street
- Esmt. = Easement
- 1 = Lot
- 1 = Block



### BENCHMARK

BM#1 Chiseled "X" top of north curb on north access drive to Meritrust Credit Union from Meridian Ave. 45' northwest of sanitary manhole, 40 feet east of back of curb corner, 29 feet north of south access drive back of curb.  
Elev.=1329.89 NAVD88

### BENCHM

Chiseled "X" top of north curb on north access drive to Meritrust Credit Union from Meridian Ave. 45' northwest of sanitary manhole, 40 feet east of back of curb corner, 29 feet north of south access drive back of curb.  
Elev.=1329.89 NAVD88

FOR REFERENCE ONLY



\*CONTINUED ON PAGE 4\*

\*CONTINUED ON PAGE 4\*

\*CONTINUED ON PAGE 2\*

\*CONTINUED ON PAGE 2\*