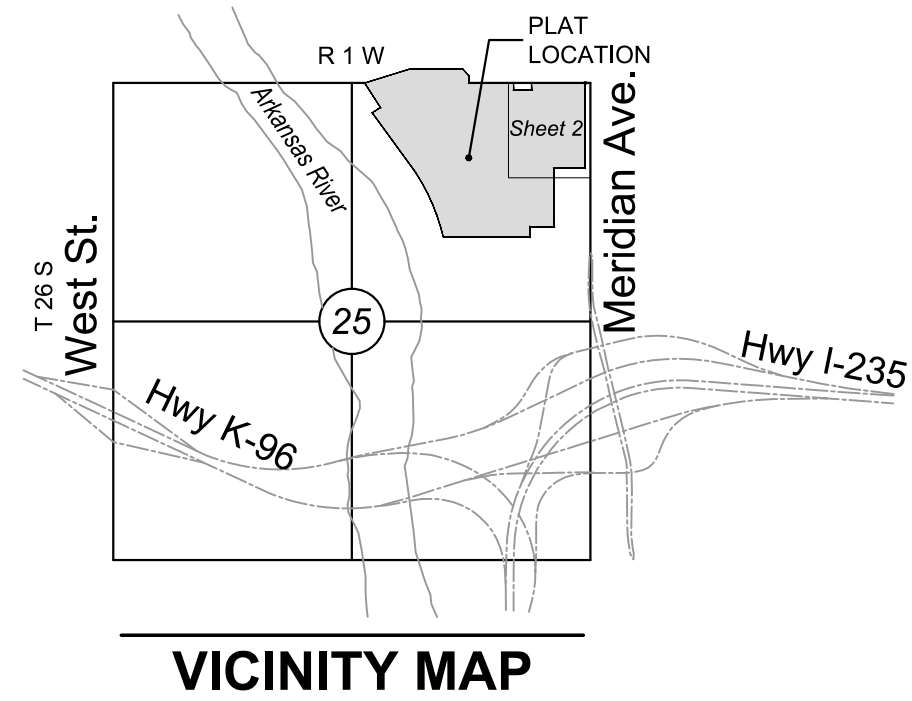


# FINAL PLAT COURTYARDS AT THE MOORINGS ADDITION AN ADDITION TO WICHITA, SEDGWICK COUNTY, KANSAS

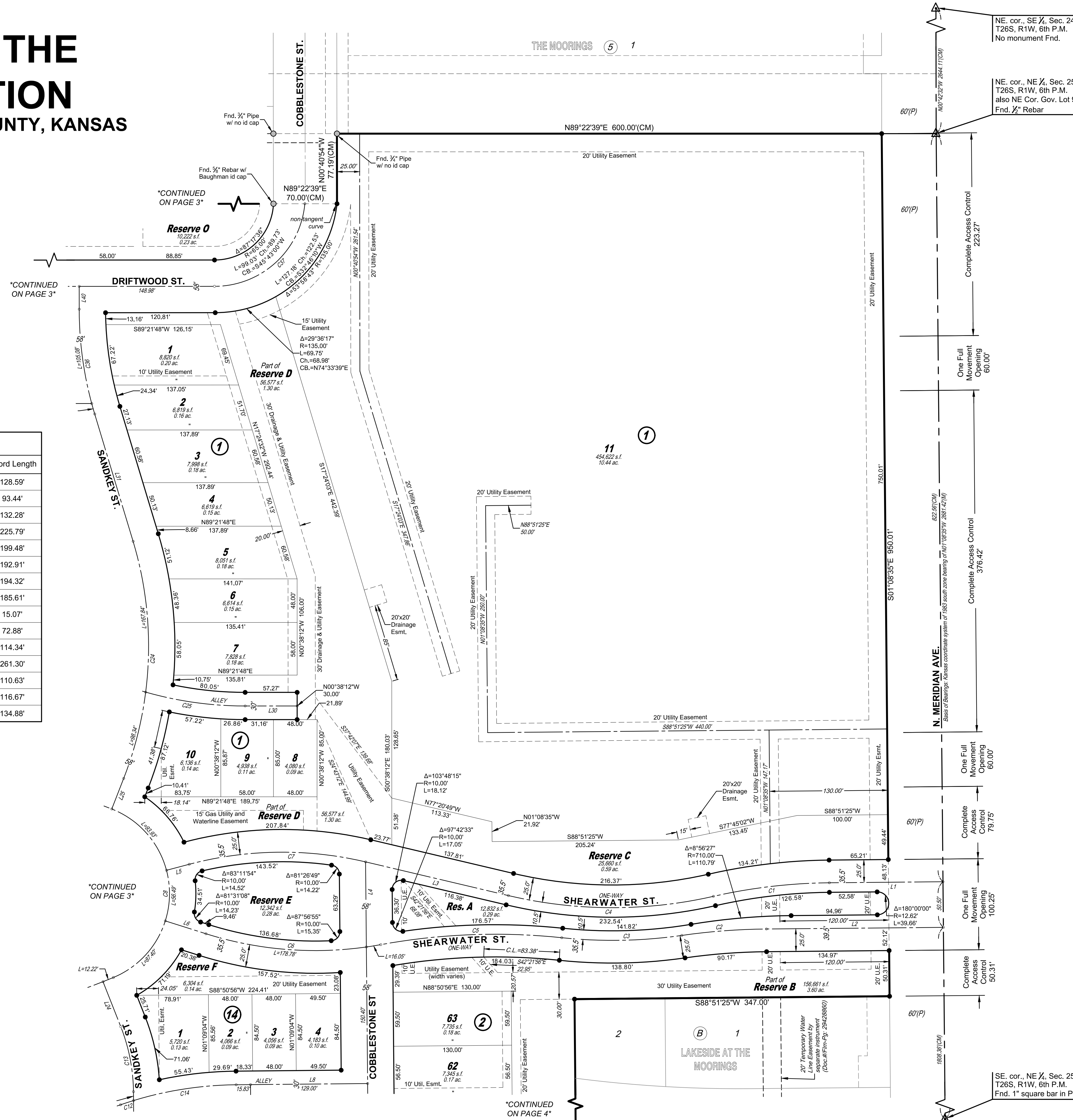


Line #	Length	Direction
L1	125.21'	S88°51'25"W
L2	194.97'	S88°51'25"W
L3	161.58'	N77°20'49"W
L4	93.73'	N01°09'04"W
L5	25.84'	S74°32'14"W
L6	46.94'	N73°05'49"W
L8	144.83'	S88°50'56"W
L24	53.32'	S22°08'46"E
L25	36.10'	S20°43'08"W
L30	57.27'	N89°21'48"E
L31	146.50'	S17°24'32"E
L40	25.12'	S00°38'12"E

Curve #	Length	Radius	Delta	Chord Direction	Chord Length
C1	128.84'	600.00'	12°18'11"	S82°42'19"W	128.59'
C2	93.51'	700.00'	7°39'14"	S85°01'47"W	93.44'
C3	132.62'	536.00'	14°10'33"	S88°17'27"W	132.28'
C4	227.76'	500.00'	26°05'57"	S89°36'12"W	225.79'
C5	200.16'	700.00'	16°22'59"	S87°11'14"W	199.48'
C6	194.83'	400.00'	27°54'26"	N87°03'02"W	192.91'
C7	196.28'	400.00'	28°06'56"	S88°35'42"W	194.32'
C8	237.82'	100.00'	136°15'36"	S01°09'04"E	185.61'
C12	15.07'	400.00'	2°09'30"	S71°20'07"W	15.07'
C13	73.29'	200.00'	20°59'41"	S11°38'55"E	72.88'
C14	114.73'	400.00'	16°26'03"	S80°37'54"W	114.34'
C24	266.18'	400.00'	38°07'40"	S01°39'18"W	261.30'
C25	110.98'	400.00'	15°53'49"	S82°41'18"E	110.63'
C36	117.09'	400.00'	16°46'20"	S09°01'22"E	116.67'
C37	148.03'	100.00'	84°48'44"	S46°57'26"W	134.88'

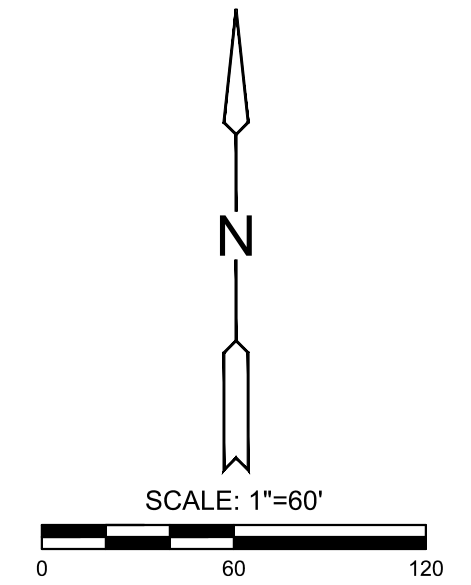
LOTS inclusive	BLOCK	ELEVATION NAVD 88
62-63	2	1329.4
1-10	1	1329.4
1-4	14	1329.4

**BENCHMARK**  
 BM#1 Chiseled "X" top of north curb on north access drive to Meritrust Credit Union from Meridian Ave. 45' northwest of sanitary manhole, 40 feet east of back of curb corner, 29 feet north of south access drive back of curb.  
 Elev.=1329.89 NAVD88



NE. cor., SE 1/4, Sec. 24, T26S, R1W, 6th P.M. No monument Fnd.

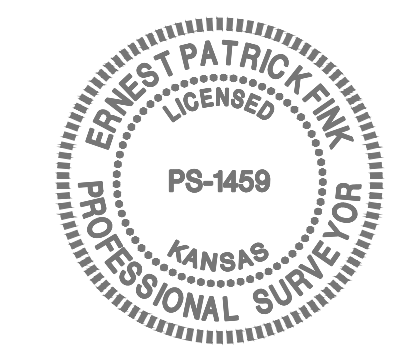
NE. cor., NE 1/4, Sec. 25, T26S, R1W, 6th P.M. also NE Cor. Gov. Lot 9 Fnd. 1/2" Rebar



Basis of Bearings: Kansas coordinate system of 1983 south zone bearing of N01°08'35"W on the east line of Northeast Quarter, Section 25, Township 26 South, Range 1 West of the Sixth Principal Meridian, Sedgwick County, Kansas. This plat is surveyed and platted on NAD83 using Kansas state plane south zone coordinates, modified to the surface, having a combined adjustment scale factor of 1.000120014401728

### LEGEND

- Date of Survey: 12/20/2021
- △ = Section Corner Monument Found
- = Found 1/2" rebar w/ MKEC CLS 39 id. cap or see annotation for type
- = Set 1/2" rebar w/ MKEC CLS 39 id. cap
- ⊕ = Benchmark
- (M) = Measured
- (P) = Platted
- (D) = Described
- (CM) = Calculated from Measurement
- (CP) = Calculated from Plat
- (CD) = Calculated from Described
- Drng. = Drainage
- Util. = Utility
- Sdwk. = Sidewalk
- St. = Street
- Esmt. = Easement
- ① = Lot
- ② = Block



FOR REFERENCE ONLY

