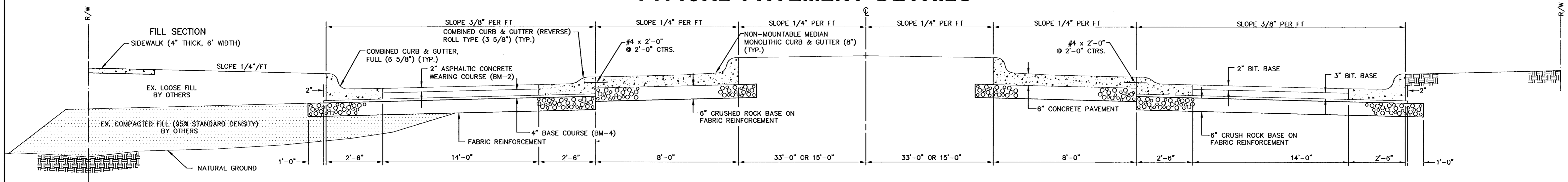
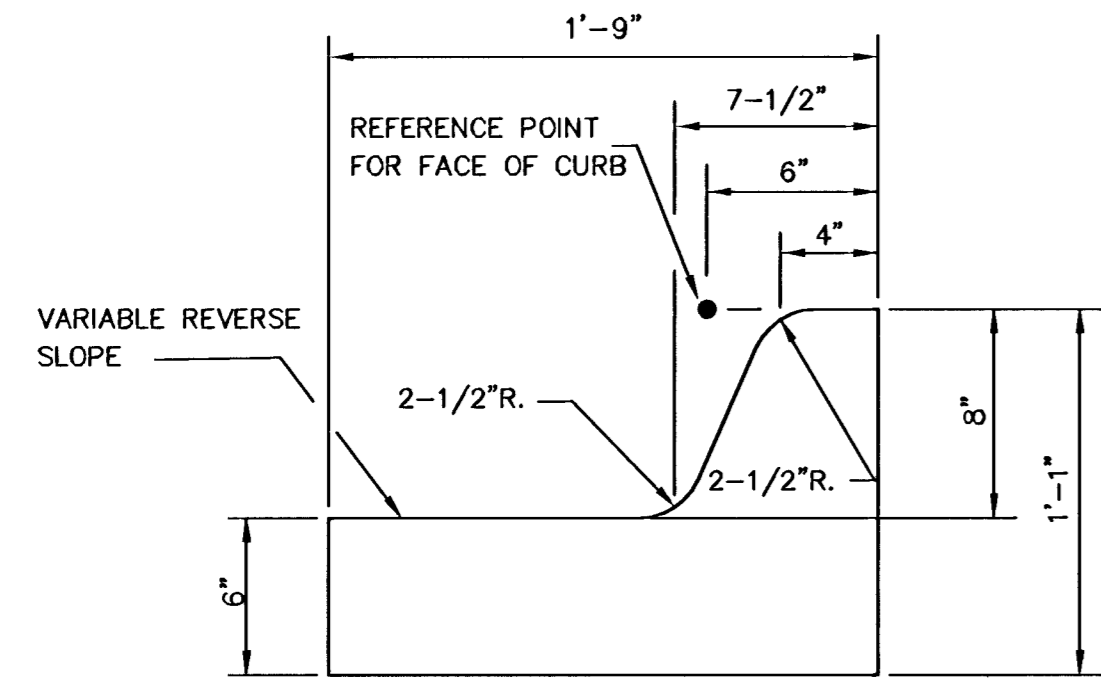


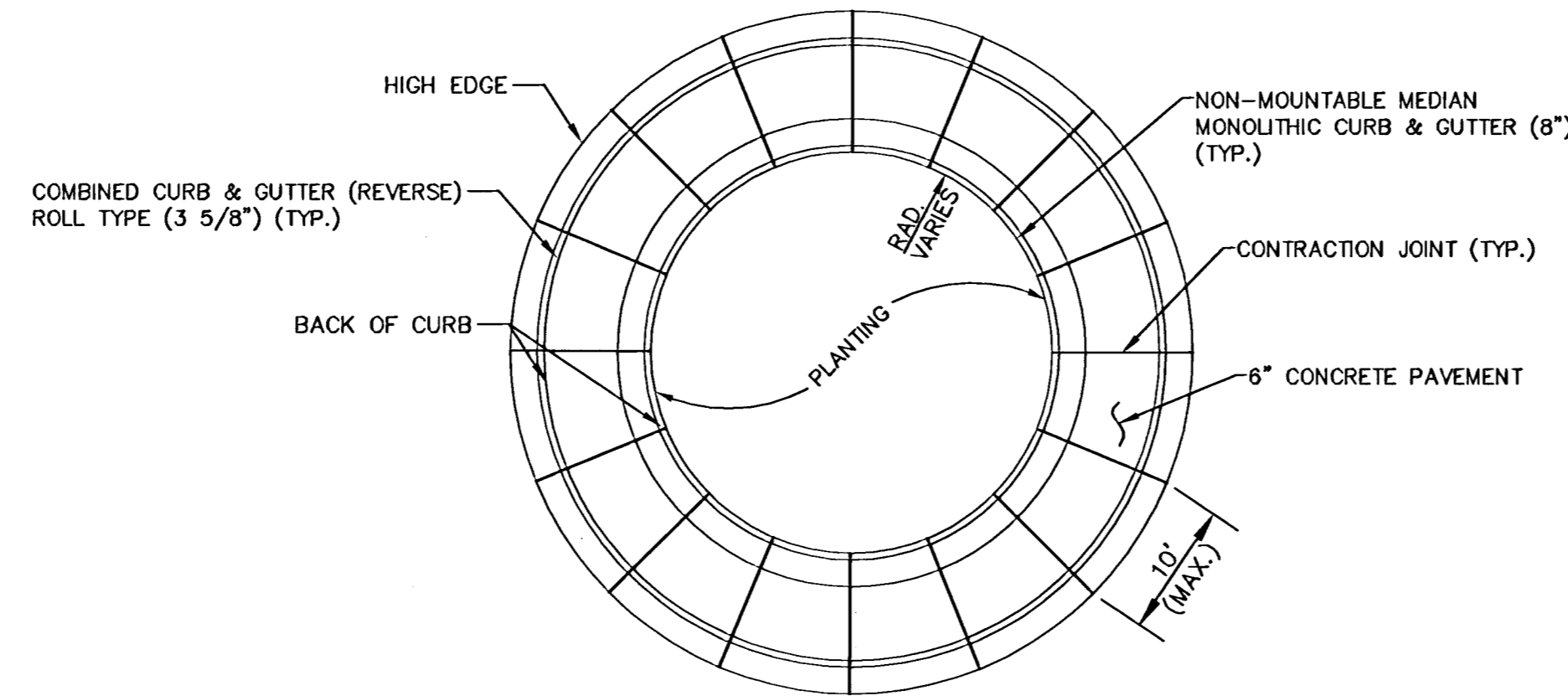
# TYPICAL PAVEMENT DETAILS



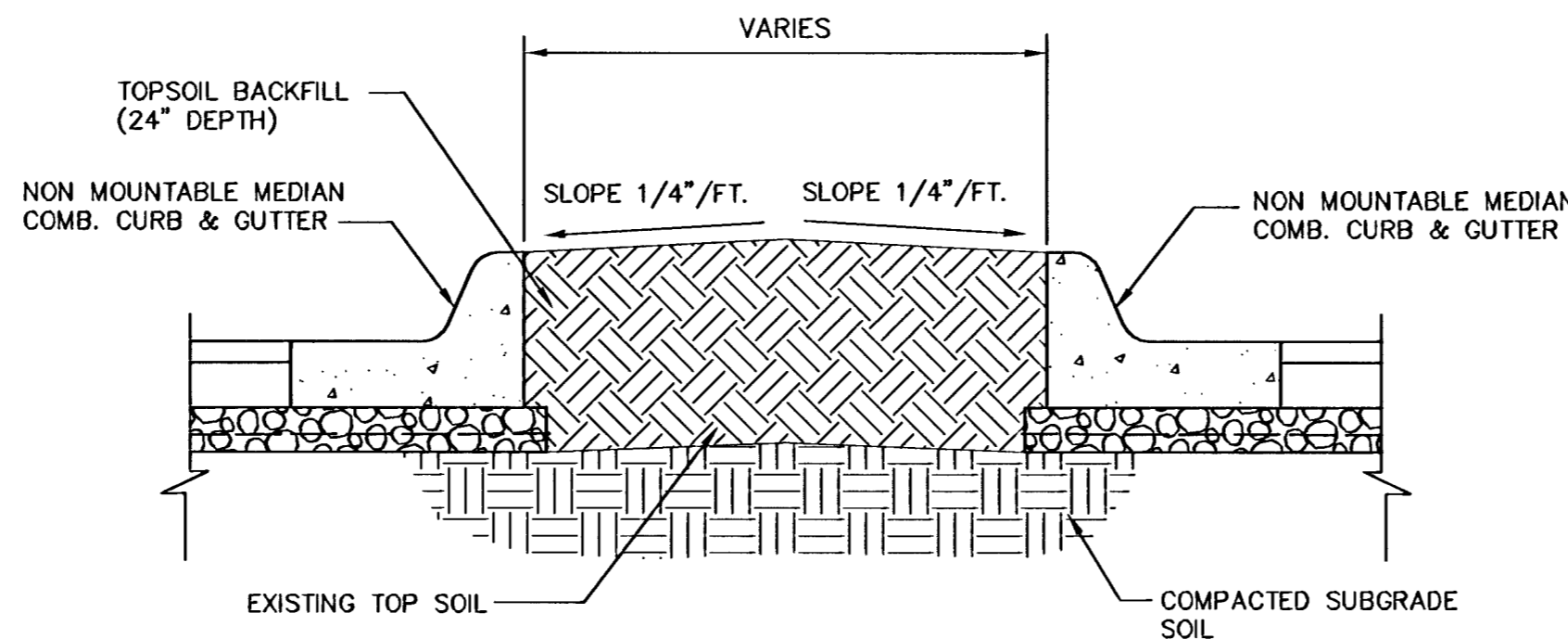
## TRANSVERSE SECTION AT ROUNDABOUT



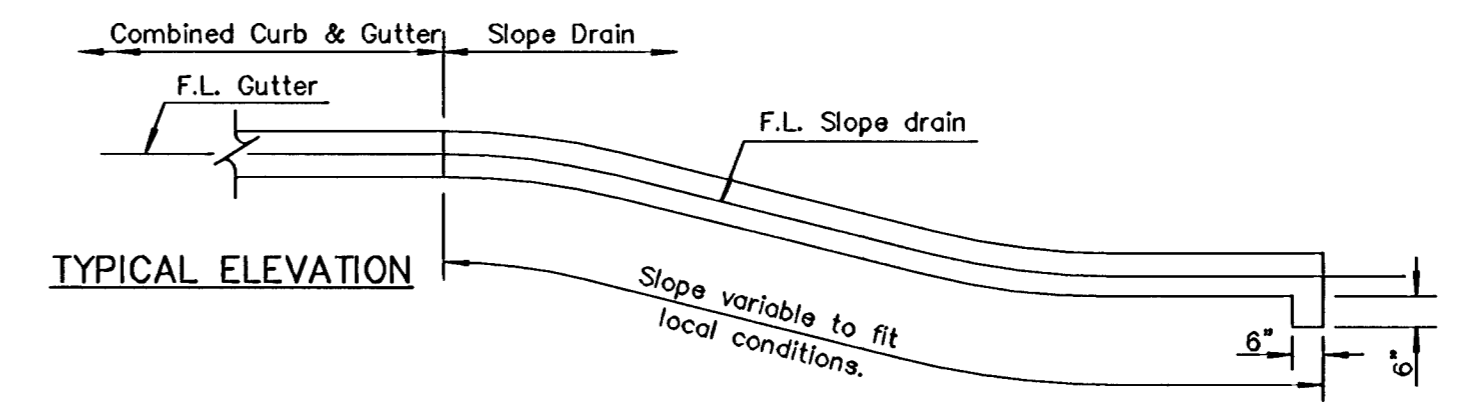
**NON-MOUNTABLE MEDIAN COMBINED CURB & GUTTER (8")**



## CONTRACTION JOINT LAYOUT AT ROUNDABOUT MEDIANS

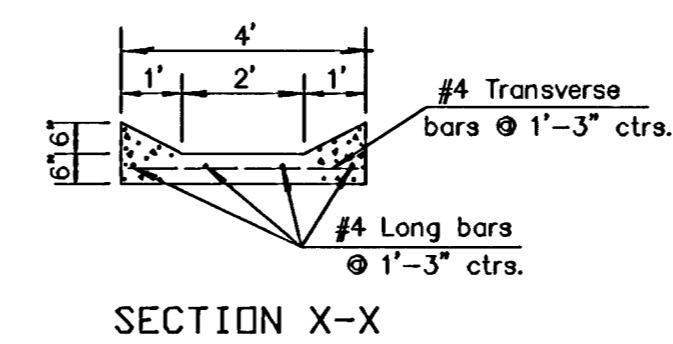
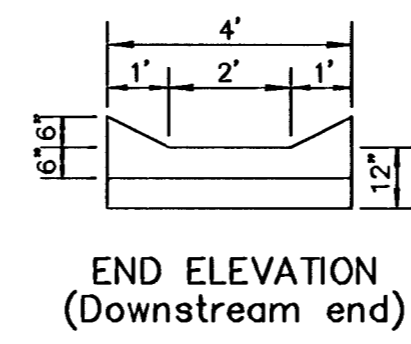


**MEDIAN DETAIL**



## SLOPE DRAIN DETAIL

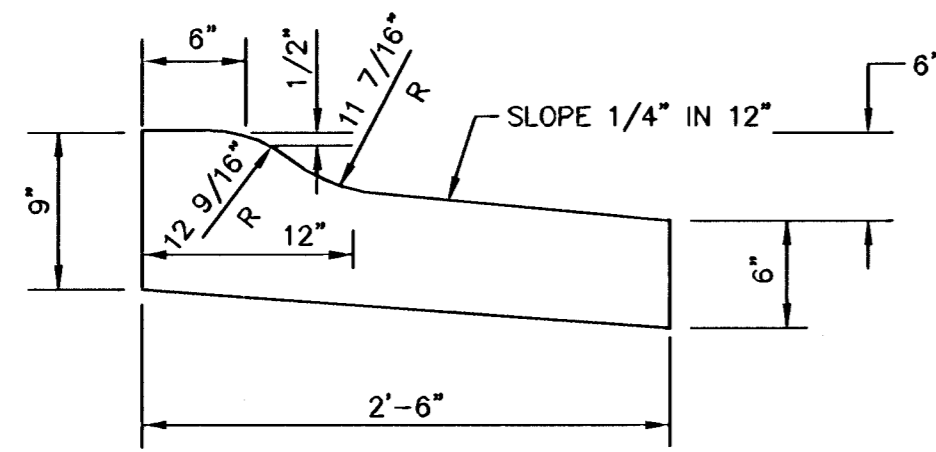
NOTES:  
Use Class "A" Concrete-AE throughout. The entire area of the Slope Drain below curbs is to be poured and struck of with a uniform thickness of 6". The curbs are to be applied in the same manner and using the same method as the edge curb. Reinforcing steel to be deformed #4 bars.



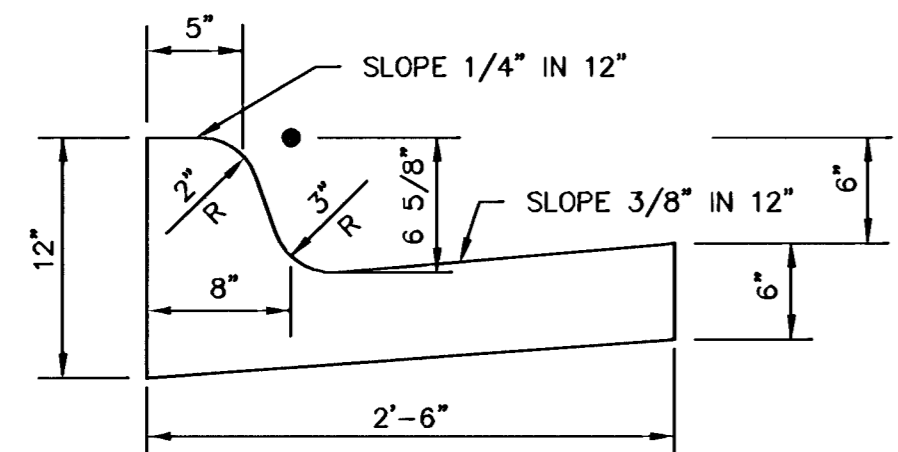
**TYPICAL PLAN**

8'-0" Min. length of transition from Standard Curb & Gutter to Section X-X.

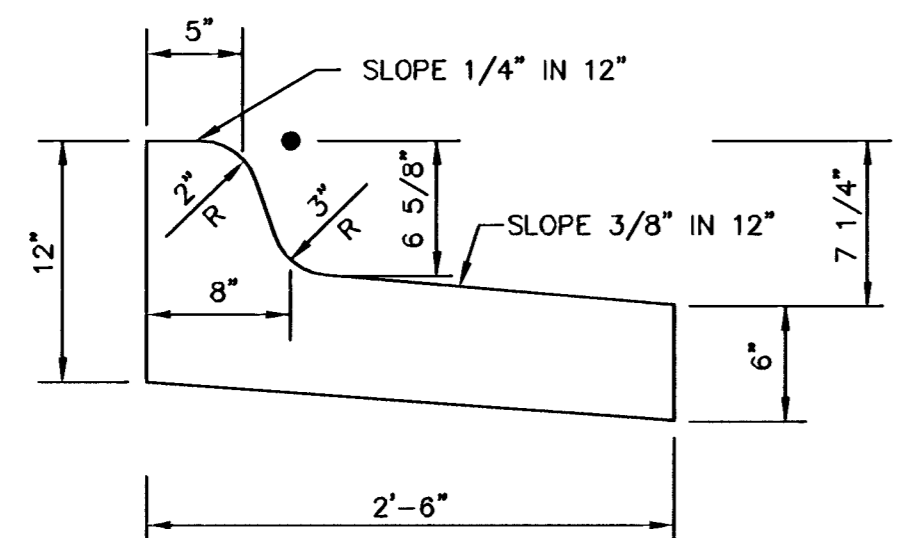
## COMBINED CURB & GUTTER (REVERSE), ROLL TYPE (3 5/8")



## COMBINED CURB & GUTTER, FULL (6 5/8")



## COMBINED CURB & GUTTER (REVERSE), FULL (6 5/8")



TRANSVERSE CONSTRUCTION JOINTS SHALL BE CONSTRUCTED IN FLEXIBLE BASE PAVEMENTS AT LOCATIONS WHERE PAVEMENT JOINS EXISTING FLEXIBLE BASE PAVEMENT AS SHOWN BY THE DETAIL. ALL COSTS ASSOCIATED WITH THE CONSTRUCTION OF THE TRANSVERSE JOINT SHALL BE INCLUDED IN THE BID PRICE FOR SQUARE YARDS 6" ASPHALTIC CONCRETE (4" BITUMINOUS BASE).

## TRANSVERSE CONSTRUCTION JOINTS

6" ASPHALTIC CONCRETE PAVEMENT WITH 6" CRUSHED ROCK STABILIZED SUBBASE ON GEOGRID BASE REINFORCEMENT  
**CITY OF WICHITA, KANSAS**

<p><b>MKEC</b> ENGINEERING CONSULTANTS 411 N. WEBB ROAD WICHITA, KS. 67206 316-684-9600</p>	<b>NORTH RIDGE VILLAGE ADDITION</b>	
	PROJECT NAME	
	<b>PAVING DETAIL</b>	
	SHEET TITLE	
	DESIGN BY: <b>MAB</b>	DRAWN BY: <b>KWS</b>
DATE: <b>JANUARY 2006</b>	JOB NO.: <b>04394</b>	SHEET/OF: <b>3 / 34</b>

I:\CIVIL\04394\DWG\PAV\04394EB4.DWG