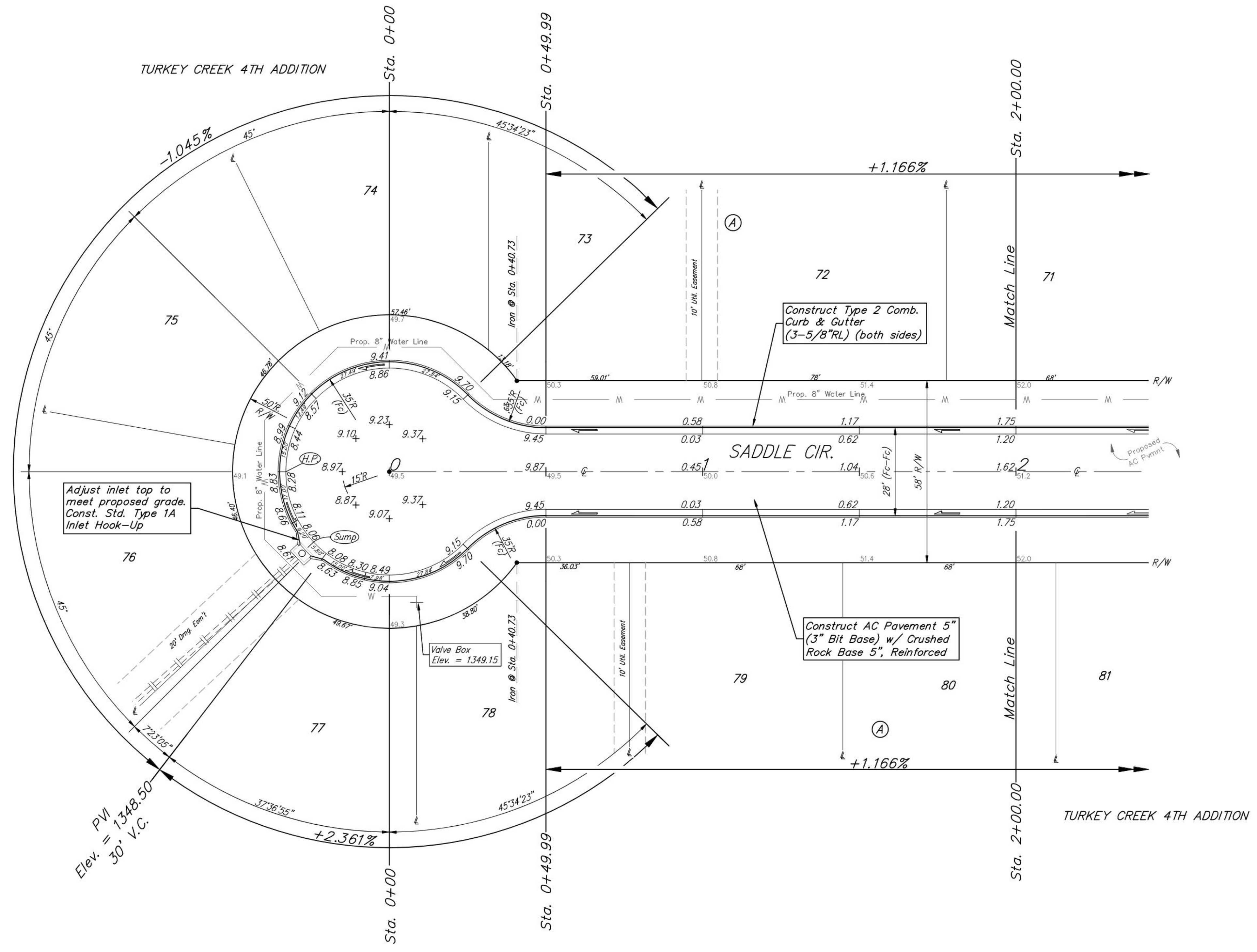
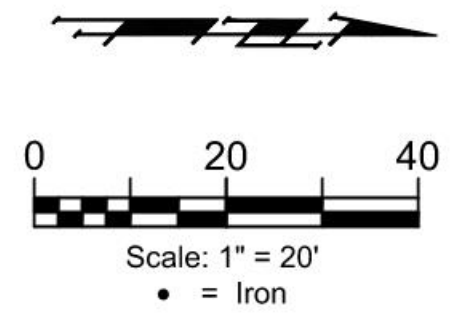


BENCHMARKS:
 RR spike in asphalt, SW Cor.,
 N1/2, SW1/4, Sec. 34, TWP. 26-S,
 R-2-E.
 Elev. = 1400.59 NAVD

R.R. spike in E. face of power pole,
 174± N. of S. line, N1/2, SW1/4
 & 49± E. of W. line, SW1/4, SEC.
 34, TWP. 26-S, R-2-E.
 Elev. = 1398.64 NAVD88

R.R. spike in S. face of power pole,
 294± S. of N. line, SW1/4, &
 48± E. of W. line, SW1/4, SEC. 34,
 TWP. 26-S, R-2-E.
 Elev. = 1386.14 NAVD88



Adjust inlet top to meet proposed grade.
 Const. Std. Type 1A Inlet Hook-Up

Construct Type 2 Comb. Curb & Gutter (3-5/8"RL) (both sides)

Construct AC Pavement 5" (3" Bit Base) w/ Crushed Rock Base 5", Reinforced

Roll type curb & gutter to be constructed on the pavement on this sheet.
 Top of curb elevation are given for full height curb.

BAUGHMAN COMPANY
 315 Ellis St.
 Wichita, KS 67211
 316-262-7271
 BaughmanCo.com

TURKEY CREEK 4TH ADDITION - PHASE III
SADDLE CIR
 Sta. 0+00 to Sta. 2+00
 Street Paving Improvements
 PROJECT NUMBER:
 472-2020-085620
 DESIGN: DMV DRAWN: JAK
 DATE: Sept. 18, 2023
 SHEET **10** OF **28**

File: E:\Projects\Turkey Creek 4th Addition\Engineering\Phase 3\STR_22-06-E217\STR_22-06-E217.dwg