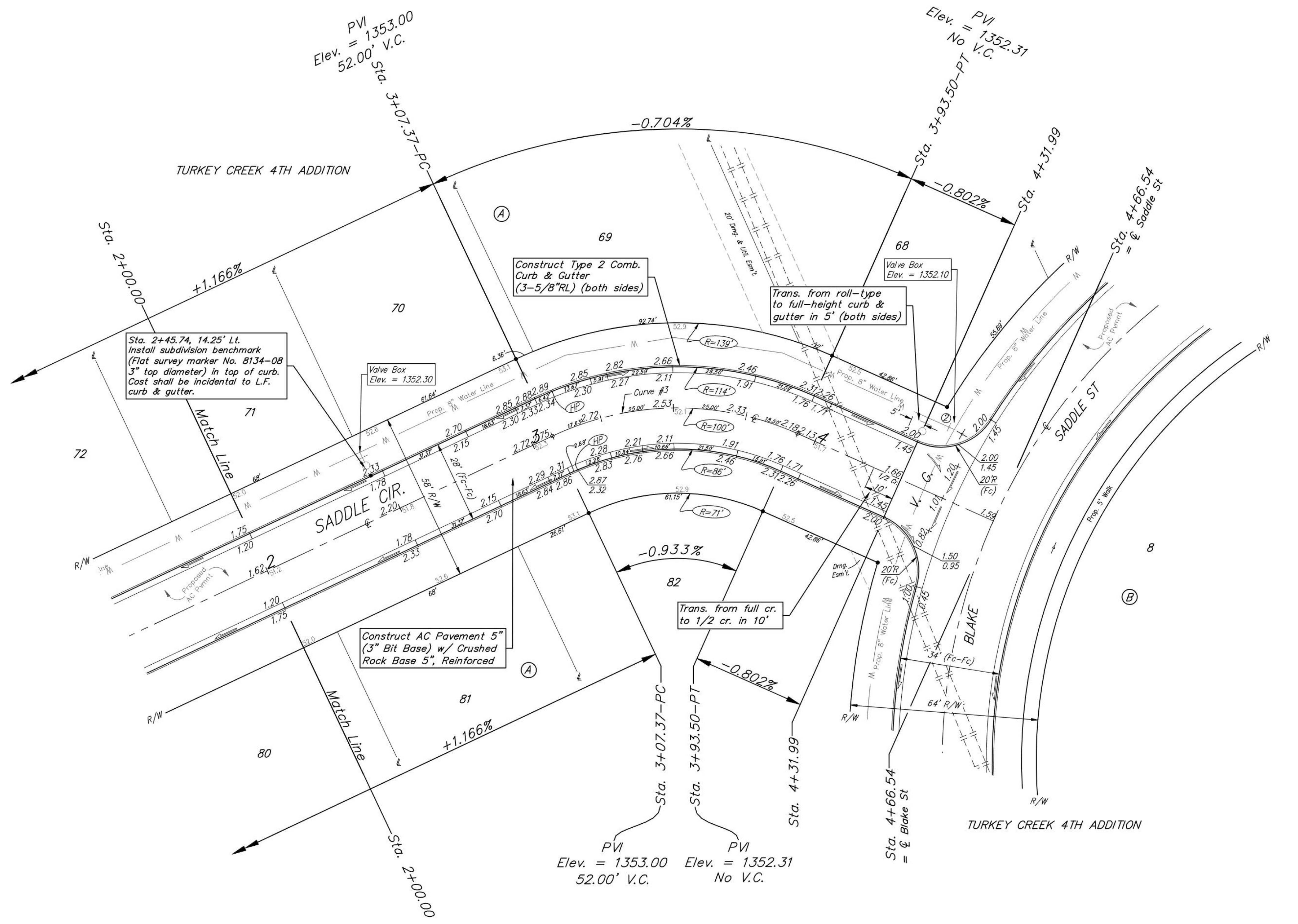
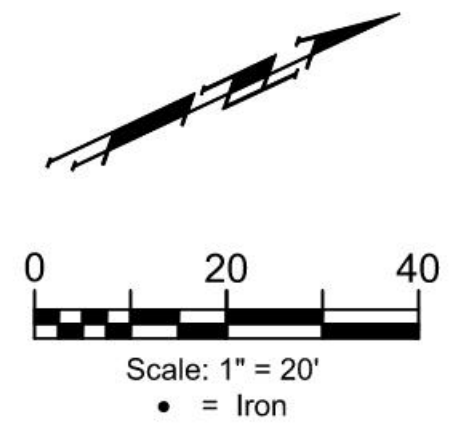


BENCHMARKS:
 RR spike in asphalt, SW Cor.,
 N1/2, SW1/4, Sec. 34, TWP. 26-S,
 R-2-E.
 Elev. = 1400.59 NAVD

RR spike in E. face of power pole,
 174± N. of S. line, N1/2, SW1/4,
 & 49± E. of W. line, SW1/4, SEC.
 34, TWP. 26-S, R-2-E.
 Elev. = 1398.64 NAVD88

RR spike in S. face of power pole,
 294± S. of N. line, SW1/4, &
 48± E. of W. line, SW1/4, SEC. 34,
 TWP. 26-S, R-2-E.
 Elev. = 1386.14 NAVD88



Curve #3
 Curve Data Based on Centerline
 Rad. = 100' Delta = 49°20'48" Tangent = 45.94'
 Arc = 86.13' L.C. = 83.49' Def./Pt. = 17.18797 Min.

Station	Arc	Face Chord Lengths		Defl.	Total Defl.
		8' Left	8' Right		
3+07.37	-	-	-	0°00'00"	0°00'00"
3+25.00	17.63'	21.48'	13.73'	5°03'01"	5°03'01"
3+50.00	25.00'	30.42'	19.45'	7°09'42"	12°12'43"
3+75.00	25.00'	30.42'	19.45'	7°09'42"	19°22'25"
3+93.50	18.50'	22.54'	14.41'	5°17'59"	24°40'24"

Roll type curb & gutter to be constructed on the pavement on this sheet.
 Top of curb elevation are given for full height curb.



BAUGHMAN COMPANY
 315 Ellis St.
 Wichita, KS 67211
 316-262-7271
 BaughmanCo.com

TURKEY CREEK 4TH ADDITION - PHASE III

SADDLE CIR

Sta. 2+00 to Sta. 4+31.99
 Street Paving Improvements

PROJECT NUMBER:
 472-2020-085620

DESIGN: DMV DRAWN: JAK
 DATE: Sept. 18, 2023

SHEET OF
11 28

File: E:\Projects\Turkey Creek 4th_1\Engineering\Phase 3\STR_22-06-E217\STR_22-06-E217.dwg