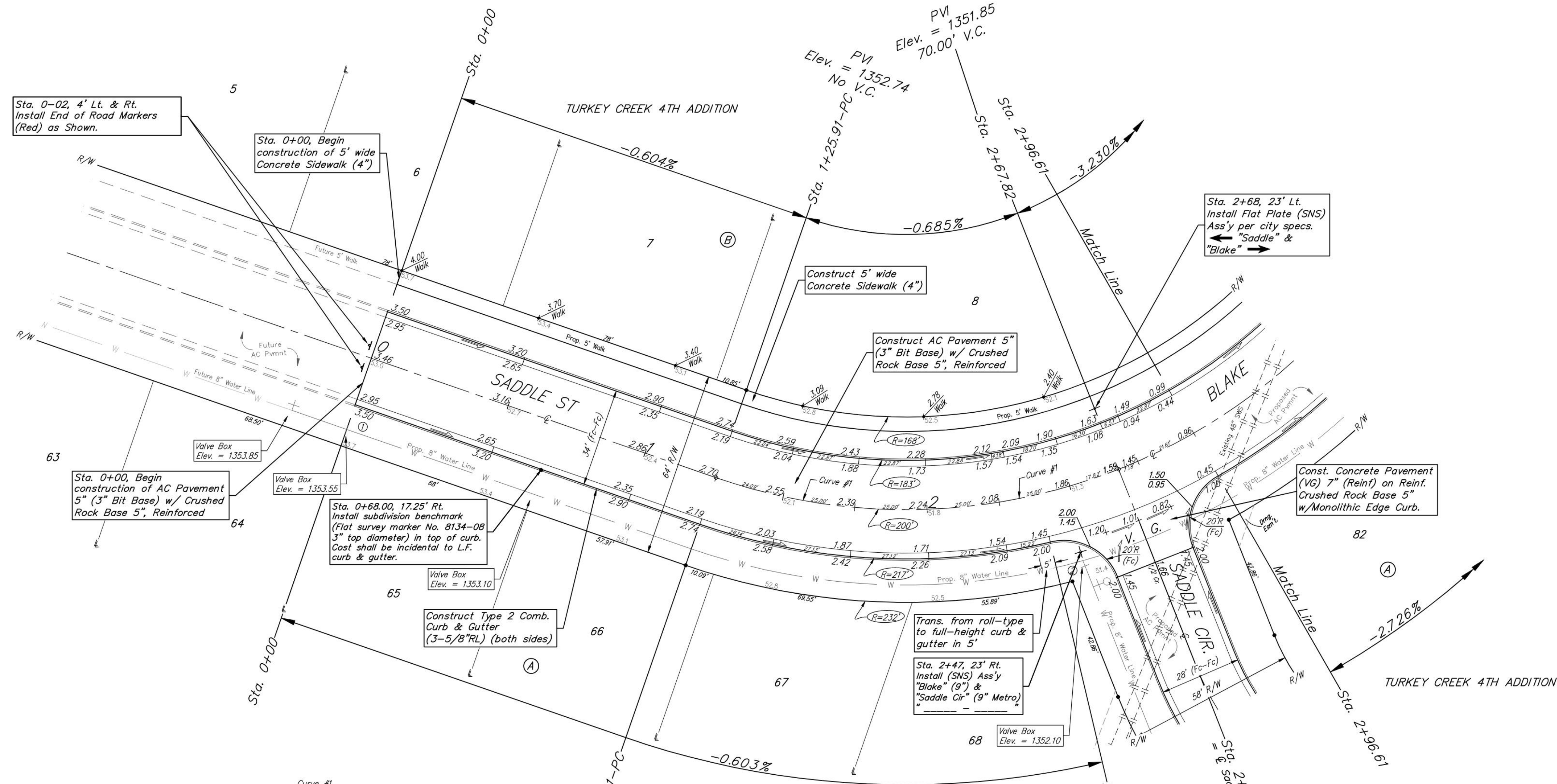
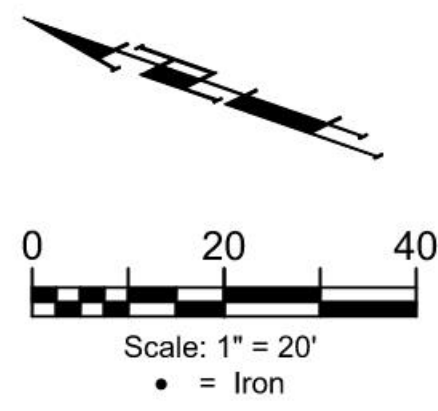


BENCHMARKS:
 RR spike in asphalt, SW Cor.,
 N1/2, SW1/4, Sec. 34, TWP. 26-S,
 R-2-E.
 Elev. = 1400.59 NAVD

R.R. spike in E. face of power pole,
 174± N. of S. line, N1/2, SW1/4
 & 49± E. of W. line, SW1/4, SEC.
 34, TWP. 26-S, R-2-E.
 Elev. = 1398.64 NAVD88

RR. spike in S. face of power pole,
 294± S. of N. line, SW1/4, &
 48± E. of W. line, SW1/4, SEC. 34,
 TWP. 26-S, R-2-E.
 Elev. = 1386.14 NAVD88



Sta. 0+02, 4' Lt. & Rt.
 Install End of Road Markers
 (Red) as Shown.

Sta. 0+00, Begin
 construction of 5' wide
 Concrete Sidewalk (4")

PVI
 Elev. = 1351.85
 No V.C.
 Sta. 1+25.91-PC
 Elev. PVI = 1352.74
 70.00' V.C.

Sta. 2+68, 23' Lt.
 Install Flat Plate (SNS)
 Ass'y per city specs.
 ← "Saddle" &
 "Blake" →

Construct 5' wide
 Concrete Sidewalk (4")

Construct AC Pavement 5"
 (3" Bit Base) w/ Crushed
 Rock Base 5", Reinforced

Const. Concrete Pavement
 (VG) 7" (Reinf. Crushed
 Rock Base 5" w/Monolithic
 Edge Curb.

Sta. 0+00, Begin
 construction of AC Pavement
 5" (3" Bit Base) w/ Crushed
 Rock Base 5", Reinforced

Sta. 0+68.00, 17.25' Rt.
 Install subdivision benchmark
 (Flat survey marker No. 8134-08
 3" top diameter) in top of curb.
 Cost shall be incidental to L.F.
 curb & gutter.

Construct Type 2 Comb.
 Curb & Gutter
 (3-5/8"RL) (both sides)

Trans. from roll-type
 to full-height curb &
 gutter in 5'

Sta. 2+47, 23' Rt.
 Install (SNS) Ass'y
 "Blake" (9") &
 "Saddle Cir" (9" Metro)

Valve Box
 Elev. = 1352.10

Curve #1
 Curve Data Based on Centerline
 Rad. = 200' Delta = 89°47'29" Tangent = 199.27'
 Arc = 313.43' L.C. = 282.33' Def./Ft. = 8.59440 Min.

Station	Arc	Face Chord Lengths		Defl.	Total Defl.
		8' Left	8' Right		
1+25.91	-	-	-	0'00"00"	0'00"00"
1+50.00	24.09'	21.07'	27.08'	3'27"02"	3'27"02"
1+75.00	25.00'	21.86'	28.11'	3'34"52"	7'01"54"
2+00.00	25.00'	21.86'	28.11'	3'34"52"	10'36"46"
2+25.00	25.00'	21.86'	28.11'	3'34"51"	14'11"37"
2+39.03	14.03'	12.27'	15.78'	2'00"35"	16'12"12"
2+50.00	10.97'	9.60'	12.34'	1'34"17"	17'46"29"
2+75.00	25.00'	21.86'	28.11'	3'34"51"	21'21"20"
2+96.61	21.61'	18.90'	24.30'	3'05"44"	24'27"04"
3+00.00	3.39'	2.97'	3.81'	0'29"08"	24'56"12"
3+25.00	25.00'	21.86'	28.11'	3'34"52"	28'31"04"
3+50.00	25.00'	21.86'	28.11'	3'34"51"	32'05"55"
3+75.00	25.00'	21.86'	28.11'	3'34"52"	35'40"47"
4+00.00	25.00'	21.86'	28.11'	3'34"51"	39'15"38"
4+25.00	25.00'	21.86'	28.11'	3'34"52"	42'50"30"
4+39.34	14.34'	12.54'	16.13'	2'03"15"	44'53"45"

Roll type curb & gutter to
 be constructed on the pavement
 on this sheet.
 Top of curb elevation are given
 for full height curb.



BAUGHMAN COMPANY
 315 Ellis St.
 Wichita, KS 67211
 316-262-7271
 BaughmanCo.com

TURKEY CREEK 4TH
 ADDITION - PHASE III

SADDLE ST

Sta. 0+00 to Sta. 2+96.61
 Street Paving Improvements

PROJECT NUMBER:
 472-2020-085620

DESIGN: DMV DRAWN: JAK
 DATE: Sept. 18, 2023

SHEET OF
7 28

File: E:\Projects\Turkey Creek 4th - Engineering\Phase 3\STR_22-06-E217\STR_22-06-E217.dwg