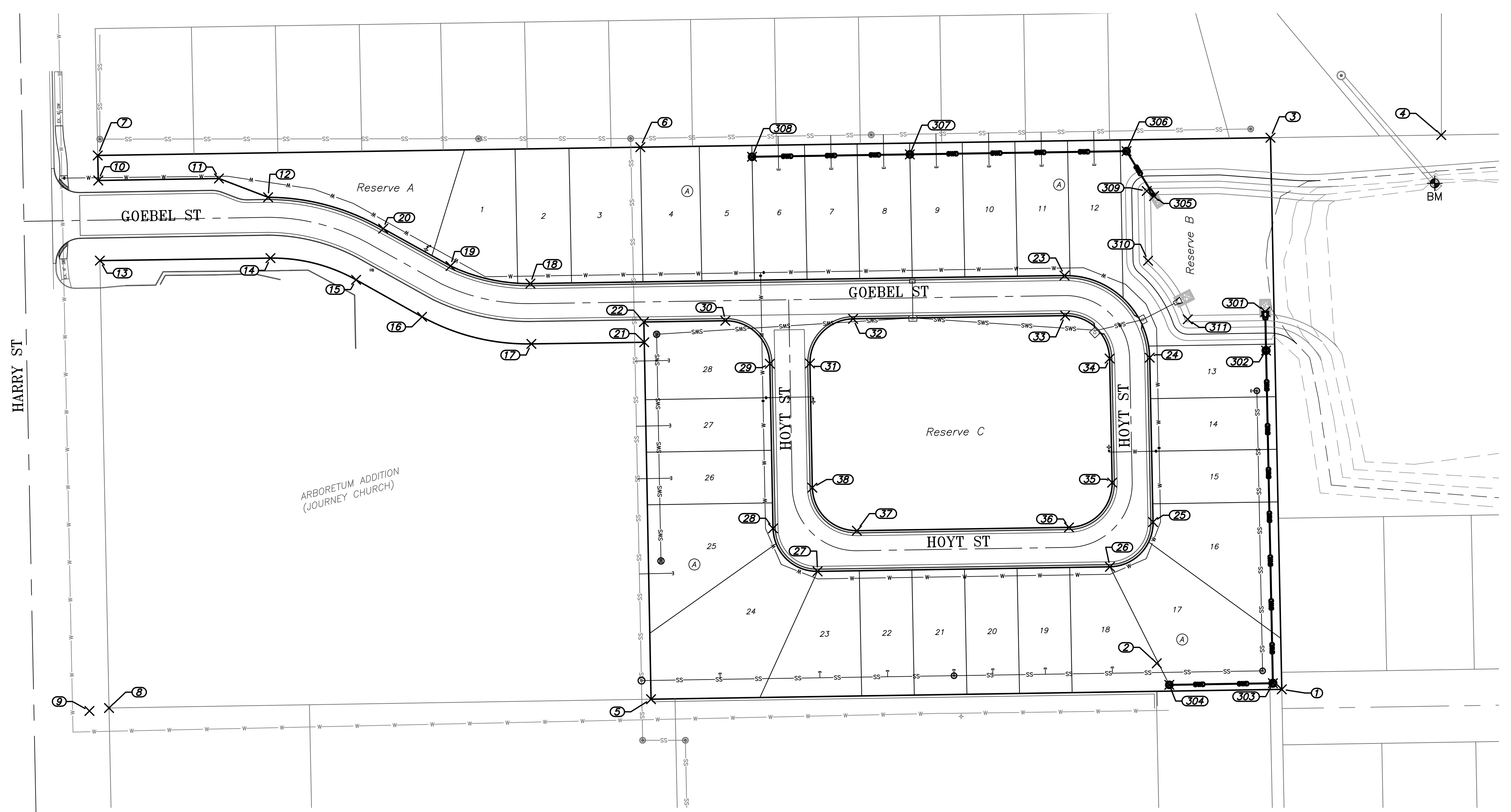
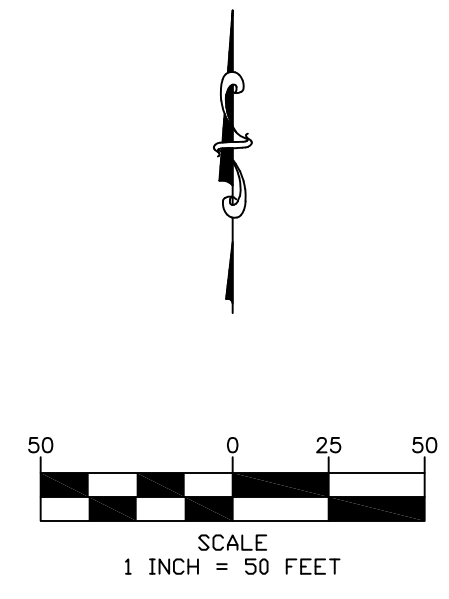


**BENCHMARK:**  
 Chiseled "□" on top of RCP  
 End Section, 131' south and  
 38' west of SE Property Corner  
 Elev = 1358.62



| Control Points |                   |            |            |         |                 |            |            |
|----------------|-------------------|------------|------------|---------|-----------------|------------|------------|
| Point #        | Raw Description   | Northing   | Easting    | Point # | Raw Description | Northing   | Easting    |
| 1              | 1in I.P. Baughman | 1677259.08 | 1681943.02 | 20      | Control         | 1677976.44 | 1682310.95 |
| 2              | R4 R&B            | 1677358.88 | 1681963.82 | 21      | Control         | 1677768.03 | 1682220.18 |
| 3              | MagNail in Tree   | 1677268.13 | 1682383.58 | 22      | Control         | 1677768.34 | 1682236.42 |
| 4              | 0.75in I.P.       | 1677131.80 | 1682385.64 | 23      | Control         | 1677432.53 | 1682273.48 |
| 5              | 0.50in I.P.       | 1677762.60 | 1681935.15 | 24      | Control         | 1677364.54 | 1682207.86 |
| 6              | 0.50in I.P.       | 1677771.15 | 1682376.01 | 25      | Control         | 1677361.84 | 1682076.61 |
| 7              | 0.75in I.P.       | 1678204.32 | 1682369.39 | 26      | Control         | 1677396.29 | 1682040.89 |
| 8              | 1in I.P. Baughman | 1678195.31 | 1681928.13 | 27      | Control         | 1677629.69 | 1682037.24 |
| 9              | R4 R&B            | 1678210.94 | 1681925.76 | 28      | Control         | 1677665.23 | 1682071.56 |
| 10             | Control           | 1678203.91 | 1682349.40 | 29      | Control         | 1677667.78 | 1682203.08 |
| 11             | Control           | 1678107.56 | 1682351.00 | 30      | Control         | 1677703.30 | 1682237.40 |
| 12             | Control           | 1678068.30 | 1682335.99 | 31      | Control         | 1677635.78 | 1682203.26 |
| 13             | Control           | 1678202.60 | 1682285.42 | 32      | Control         | 1677601.31 | 1682238.94 |
| 14             | Control           | 1678066.42 | 1682287.41 | 33      | Control         | 1677432.05 | 1682241.48 |
| 15             | Control           | 1677998.08 | 1682270.09 | 34      | Control         | 1677396.53 | 1682207.21 |
| 16             | Control           | 1677945.40 | 1682240.54 | 35      | Control         | 1677394.50 | 1682108.10 |
| 17             | Control           | 1677858.12 | 1682218.93 | 36      | Control         | 1677428.94 | 1682072.38 |
| 18             | Control           | 1677858.92 | 1682267.06 | 37      | Control         | 1677598.31 | 1682069.74 |
| 19             | Control           | 1677922.71 | 1682281.11 | 38      | Control         | 1677683.85 | 1682104.05 |

| SWD Points |                 |            |            |
|------------|-----------------|------------|------------|
| Point #    | Raw Description | Northing   | Easting    |
| 301        | 0+00 SWS1       | 1677272.27 | 1682244.63 |
| 302        | 0+31.42 SWS1    | 1677271.64 | 1682213.61 |
| 303        | 2+97.18 SWS1    | 1677266.18 | 1681947.91 |
| 304        | 3+79.89 SWS1    | 1677348.88 | 1681946.62 |
| 305        | 0+00 SWS2       | 1677361.08 | 1682336.94 |
| 306        | 0+39.73 SWS2    | 1677383.02 | 1682372.85 |
| 307        | 2+12.73 SWS2    | 1677556.00 | 1682370.24 |
| 308        | 3+38.73 SWS2    | 1677681.99 | 1682368.35 |
| 309        | Pond Radius     | 1677366.90 | 1682341.00 |
| 310        | Pond Radius     | 1677365.82 | 1682285.30 |
| 311        | Pond Radius     | 1677334.18 | 1682238.56 |



Buena Vista Addition  
**Control Map**  
 Wichita, Kansas

**KEMILLER**  
 ENGINEERING  
 117 E. Lewis, Wichita, KS 67202 (316)264-0242

|                    |                 |                     |
|--------------------|-----------------|---------------------|
| KEM PROJ.<br>18085 | DATE<br>05.2023 | SHEET<br><b>2.0</b> |
| DESIGN<br>KEM      | DRAWN<br>ZJS    |                     |