

PAVING FOR 24TH ST. N.  
W/ INCIDENTAL SWS IMPROVEMENTS

to serve  
**KRUG NORTH 2ND ADDITION - PH. IV**

24th St. N. from the east line of Lot 18, Block A,  
east to the east line of the plat  
Quincy Cir. from the north line of 24th St. N.  
north to and including the cul-de-sac  
N. Springdale Cir. from the north line of 24th St. N.  
north to and including the cul-de-sac  
N. Springdale Cir. from the south line of 24th St. N.  
south to and including the cul-de-sac

**CITY OF WICHITA, KANSAS**

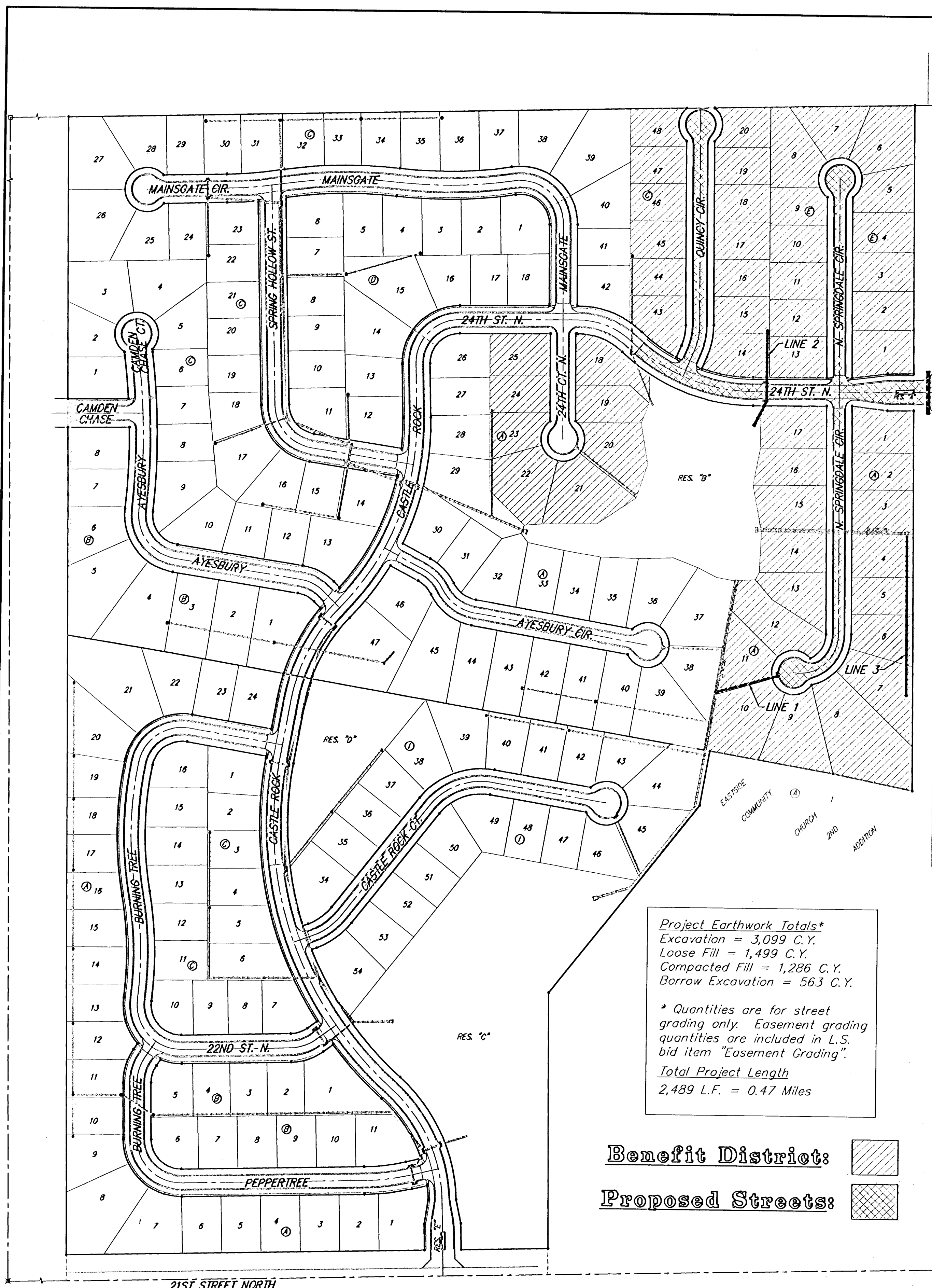
James L. Armour, P.E. City Engineer

Project Number

**472-84250**

O.C.A. Number:

**765988**



Scale: 1" = 150'

**GENERAL NOTES:**

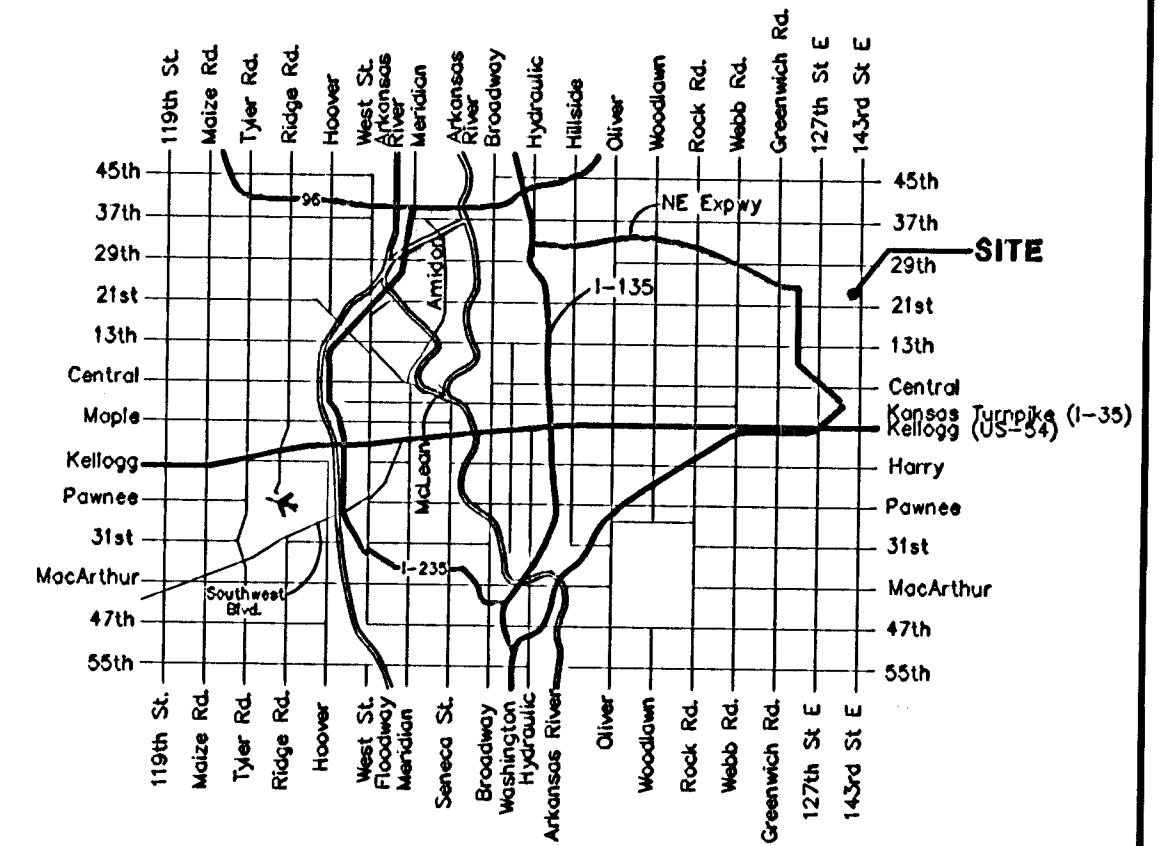
- Contractor will be required to provide notice to utility companies a minimum of forty-eight (48) hours prior to any excavation, as follows:  
Kansas One-Call 687-2470  
The Contractor must notify the following in case of an emergency:  
Cox Communications 262-4270  
Kansas Gas Service 1-888-482-4950  
Westar Energy 383-8650  
Aquila Energy 1-800-303-0357  
SBC 268-2245  
City of Wichita Water Dept. 268-4563  
City of Wichita Sewer Maint. 268-4024  
City of Wichita Storm Sewer Maint. 268-4090  
City of Wichita Traffic Maint. 268-4034  
Conoco Pipeline Co. 1-800-231-2551  
Southern Star Pipeline Co. 529-6600  
Phillips Pipeline Co. 1-800-766-8230
- Utility service lines, poles, valve boxes, meters, and etcetera are to be adjusted as necessary by others prior to construction unless the plans specifically call for their adjustment by the Contractor or unless the plans specifically identify a utility to be adjusted by its owner during construction. Existing utilities and their location, as shown on the plans, represent the best information obtainable for design. The Contractor will be required to work around existing utilities within the right-of-way which do not conflict with proposed construction.
- Rubble from the removal of miscellaneous structures and excess excavation which is to be wasted shall be disposed of on sites to be provided by the Contractor. These sites shall be approved by the Engineer as to suitability, appearance and site location. Locations, in the opinion of the Engineer, that will leave an unsightly appearance will not be approved. All disposal sites must be approved by the Kansas Department of Health and Environment. Material either stockpiled or disposed of in a flood plain would require a Kansas State Board of Agriculture permit. Any material dumped in waters of the United States or wetlands is subject to U.S. Corps of Engineers permitting regulations. Any material buried or stockpiled beyond approved construction limits would require additional archeological investigations unless buried in a previously approved borrow location.
- Trees and shrubs in public right-of-way which are in direct conflict with proposed new construction shall be removed by the Contractor with the Engineer's approval. Trees and shrubs which are not in direct conflict with proposed new construction shall be saved and protected from damage.
- The Contractor shall give all property owners and/or tenants of developed property abutting the construction of this project a minimum of ten (10) days notice prior to start of construction.
- The Contractor shall be responsible for preserving property irons. The Contractor will be required to re-establish any property irons which are damaged or destroyed by his construction operations. Such irons shall be re-established by a licensed land surveyor in accordance with state laws.
- All existing and proposed erosion control measures including silt fencing, erosion control mat, straw bales, inlet barriers, and const. entrance shall be maintained throughout construction by the contractor and until project is accepted by the City of Wichita. The on-site engineer shall complete weekly reports on the status of erosion control measures. The contractor shall be required to comply with maintenance and/or replacement of erosion control measures as determined by the on-site engineer until project is accepted by City of Wichita. Maintenance and/or replacement of erosion control measures to be paid by L.S. bid item "Site Clearing & Restoration".
- Contractor shall contact Ritchie Development for availability and location of contractor borrow. The contact person is Rob Ramseyer, (316) 684-7300.

**Project Earthwork Totals\***  
Excavation = 3,099 C.Y.  
Loose Fill = 1,499 C.Y.  
Compacted Fill = 1,286 C.Y.  
Borrow Excavation = 563 C.Y.

\* Quantities are for street grading only. Easement grading quantities are included in L.S. bid item "Easement Grading".

**Total Project Length**  
2,489 L.F. = 0.47 Miles

**Benefit District:** [Hatched Box]  
**Proposed Streets:** [Cross-hatched Box]



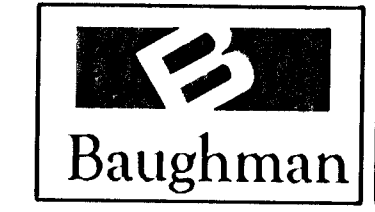
**Vicinity Map**

**Sheet Index**

Title Sheet	1
35' Pavement Detail	2
29' Pavement Detail	3
Sign Detail	4
Miscellaneous Details	5
Median Details	6
24th St. N.	7-8
Quincy Cir.	9-10
N. Springdale Cir. (Lots 1-17, Block A)	11-12
N. Springdale Cir. (Lots 1-13, Block E)	13
SWS Lines 1 & 2	14
SWS Line 3	15
Std. Type 1A Double Curb Inlet Detail	16
Special Yard Inlet Detail	17
Standard Manhole Detail	18
Ring & Cover Detail	19
RC Headwall Detail	20
Soil Erosion BMPs	21-24
Erosion Control/Esmt. Grading Plan	25
Coordinate Sheet	26
Street X-Sections	27-34
Copy of Plat	35

**Benchmarks**

BM #1: "□" Cut in middle of N headwall of RCBC on 21st St. North, 1004.3' W & 22.1' N of SE Cor., SE1/4, Sec. 2, T-27-S, R-2-E. Elev. = 173.23 City Datum  
BM #2: "□" Cut at the SE corner of the intersection of Castle Rock & Castle Rock Ct., Krug North Addition. Elev. = 183.50 City Datum



Baughman Company, P.A. 315 Ella St. Wichita, KS 67211 P 316-262-7271 F 316-262-0144  
ENGINEERING | SURVEYING | PLANNING | LANDSCAPE ARCHITECTURE