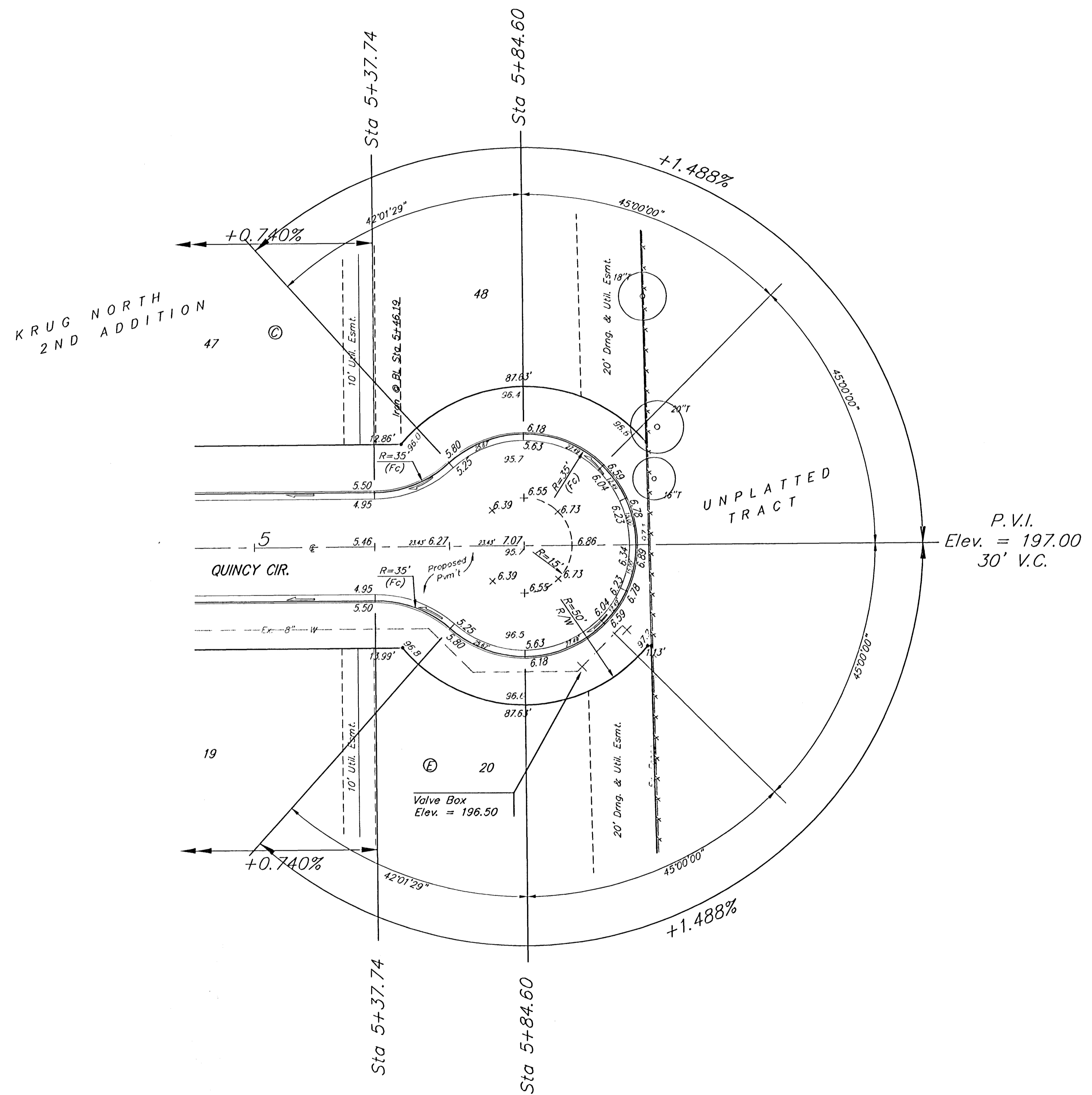


BENCHMARK:
 BM #1: "□" Cut in middle of
 N headwall of RCBC on 21st
 St. North. 1004.3' W & 22.1'
 N of SE Cor., SE1/4, Sec. 2,
 T-27-S, R-2-E.
 Elev. = 173.23 City Datum

BM #2: "□" Cut at the SE
 corner of the intersection of
 Castle Rock & Castle Rock Ct.,
 Krug North Addition.
 Elev. = 183.50 City Datum

Scale: 1" = 20'
 • = Iron



NOTE: ROLL TYPE CURB & GUTTER TO BE CONSTRUCTED ON THE PAVEMENT SHOWN ON THIS SHEET. TOP OF CURB ELEVATIONS ARE GIVEN FOR FULL HEIGHT CURB.

	KRUG NORTH 2ND ADD. - PH. IV QUINCY CIR. STA 5+37.74 TO STA 5+84.60	
	Baughman Company, P.A. 315 Ellis St. Wichita, KS 67211 P 316-263-7211 F 316-263-0149 ENGINEERING SURVEYING PLANNING LANDSCAPE ARCHITECTURE	
PROJECT NUMBER 472-84250	DESIGN ATD	DRAWN TMS
REVISIONS:	APPROVED	DATE 04/06
SCALE Noted		SHEET 10 OF 35
KrugNorth2nd\PhaseIV\Ser4		05-12-E442