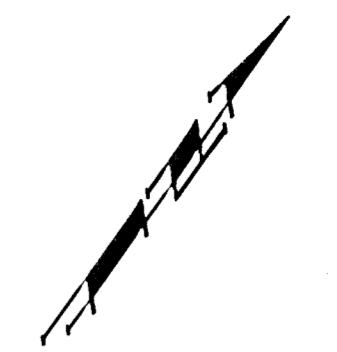
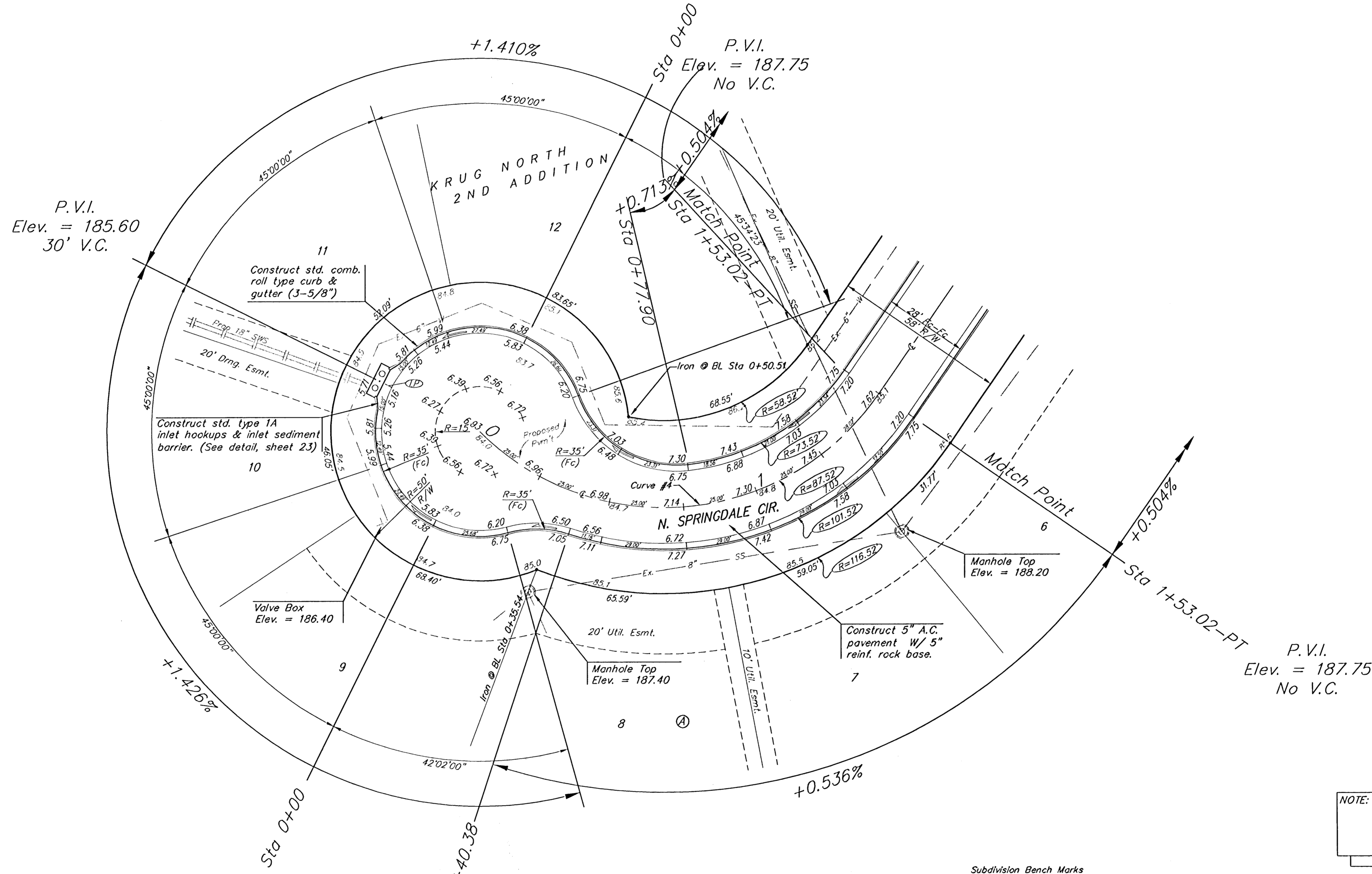


BENCHMARK:
 BM #1: "□" Cut in middle of
 N headwall of RCBC on 21st
 St. North, 1004.3' W & 22.1'
 N of SE Cor., SE1/4, Sec. 2,
 T-27-S, R-2-E.
 Elev. = 173.23 City Datum

BM #2: "□" Cut at the SE
 corner of the intersection of
 Castle Rock & Castle Rock Ct.,
 Krug North Addition.
 Elev. = 183.50 City Datum



Scale: 1" = 20'
 • = Iron



Curve #4
 Curve Data Based on Centerline
 Rad. = 87.52' Delta = 100° 10' 55" Tangent = 104.64'
 Arc = 153.02' L.C. = 134.27' Def/Fl. = 19.64095 Min.

Station	Arc	FACE CHORD LENGTHS		Defl.	T. Defl.
		B' Lt.	B' Rt.		
0+00.00	-	-	-	0°00'00"	0°00'00"
0+40.38	40.38'	29.96'	50.09'	1°31'30.6"	1°31'30.6"
0+50.00	9.62'	7.20'	12.03'	3°08'57"	16°22'03"
0+75.00	25.00'	18.65'	31.18'	8°11'01"	24°33'04"
0+77.90	2.90'	2.17'	3.63'	0°56'57"	25°30'02"
1+00.00	22.10'	16.50'	27.58'	7°14'04"	32°44'06"
1+25.00	25.00'	18.65'	31.18'	8°11'01"	40°55'07"
1+50.00	25.00'	18.65'	31.18'	8°11'01"	49°06'08"
1+53.02	3.02'	2.28'	3.78'	0°59'19"	50°05'27"

Subdivision Bench Marks

Street & Station	Location Description	Elevation
24th St. N. 1+82.75, 17.25' Lt.	Adjacent to Fire Hydrant at E. End of E. Curb Return of 24th St. N. and Quincy Cir.	
Quincy Cir. 3+62.20, 17.25' Rt.	Adjacent to Fire Hydrant near common lot corner of Lots 17-18, Block E.	
N. Springdale Cir. (Lots 1-17, Block A) 2+92.61, 14.25' Lt.	Adjacent to Fire Hydrant near common lot corner of Lots 13-14, Block A.	
N. Springdale Cir. (Lots 1-13, Block E) 3+82.00, 14.25' Lt.	Adjacent to Fire Hydrant near common lot corner of Lots 9-10, Block E.	

NOTE: ROLL TYPE CURB & GUTTER TO BE CONSTRUCTED ON THE PAVEMENT SHOWN ON THIS SHEET. TOP OF CURB ELEVATIONS ARE GIVEN FOR FULL HEIGHT CURB.

Baughman KRUG NORTH 2ND ADD. - PH. IV
N. SPRINGDALE CIR.
 STA 0+00 TO STA 1+53.02

Baughman Company, P.A. 315 Ellis St. Wichita, KS 67211 P 316-263-7211 F 316-262-0149
 ENGINEERING | SURVEYING | PLANNING | LANDSCAPE ARCHITECTURE

PROJECT NUMBER: 412-84250
 DESIGN: ATD
 DRAWN: TMS
 APPROVED: [Signature] DATE: 04/06

REVISIONS:

SCALE: Noted
 SHEET: **11 OF 35**

KrugNorth2nd\Phase\VASet 05-12-E449