

BENCHMARK:
 BM #1: "□" Cut in middle of N headwall of RCBC on 21st St. North, 1004.3' W & 22.1' N of SE Cor., SE1/4, Sec. 2, T-27-S, R-2-E. Elev. = 173.23 City Datum
 BM #2: "□" Cut at the SE corner of the intersection of Castle Rock & Castle Rock Ct., Krug North Addition. Elev. = 183.50 City Datum

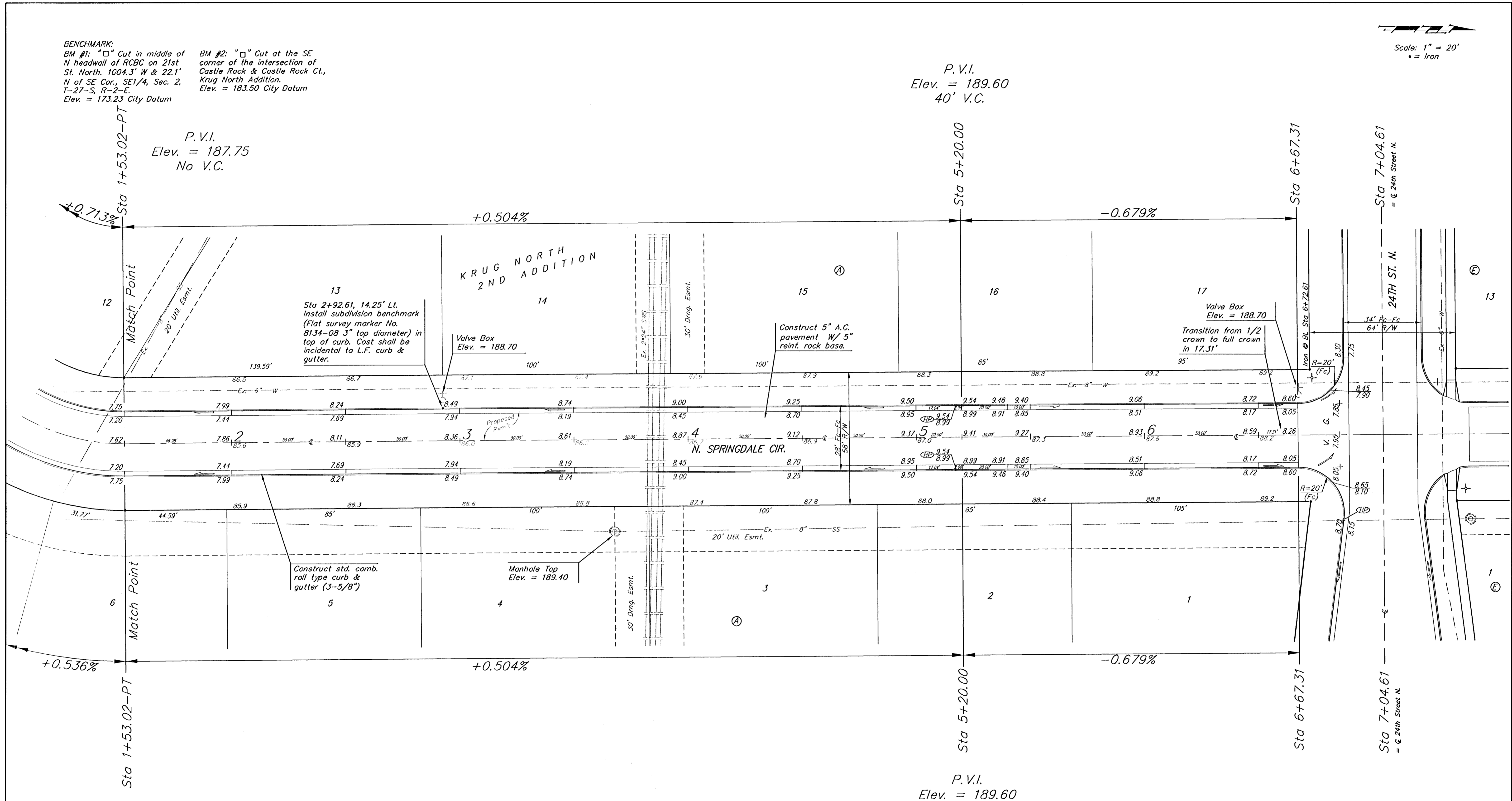
Scale: 1" = 20'
 • = Iron

P.V.I.
 Elev. = 189.60
 40' V.C.

P.V.I.
 Elev. = 187.75
 No V.C.

P.V.I.
 Elev. = 189.60
 40' V.C.

P.V.I.
 Elev. = 187.75
 No V.C.



NOTE: ROLL TYPE CURB & GUTTER TO BE CONSTRUCTED ON THE PAVEMENT SHOWN ON THIS SHEET. TOP OF CURB ELEVATIONS ARE GIVEN FOR FULL HEIGHT CURB.

	KRUG NORTH 2ND ADD. - PH. IV N. SPRINGDALE CIR. STA 1+53.02 TO STA 7+04.61	
	<small>Baughman Company, P.A. 315 Elm St. Wilkes, KS 67111 F 316-262-7771 F 316-262-0149 ENGINEERING SURVEYING PLANNING LANDSCAPE ARCHITECTURE</small>	
PROJECT NUMBER 472-84250	DESIGN ATD	DRAWN TMS
REVISIONS:	APPROVED <small>(Signature)</small>	DATE 04/06
SCALE Noted		SHEET 12 OF 35
<small>KrugNorth2ndVPhaseIVSet6</small>		<small>05-12-E449</small>