

BENCHMARK:
 BM #1: "□" Cut in middle of N headwall of RCBC on 21st St. North. 100A.3' W & 22.1' N of SE Cor., SE 1/4, Sec. 2, T-27-S, R-2-E. Elev. = 173.23 City Datum
 BM #2: "□" Cut at the SE corner of the intersection of Castle Rock & Castle Rock Ct., Krug North Addition. Elev. = 183.50 City Datum

Sta 0+00, Begin Line 1
 1 - 24" RC headwall
 26.7 S.Y. heavy stone rip-rap

Sta 0+57.3, Line 1
 Construct std. type 1A curb inlet (10'x3').
 Top Elev. = 187.40

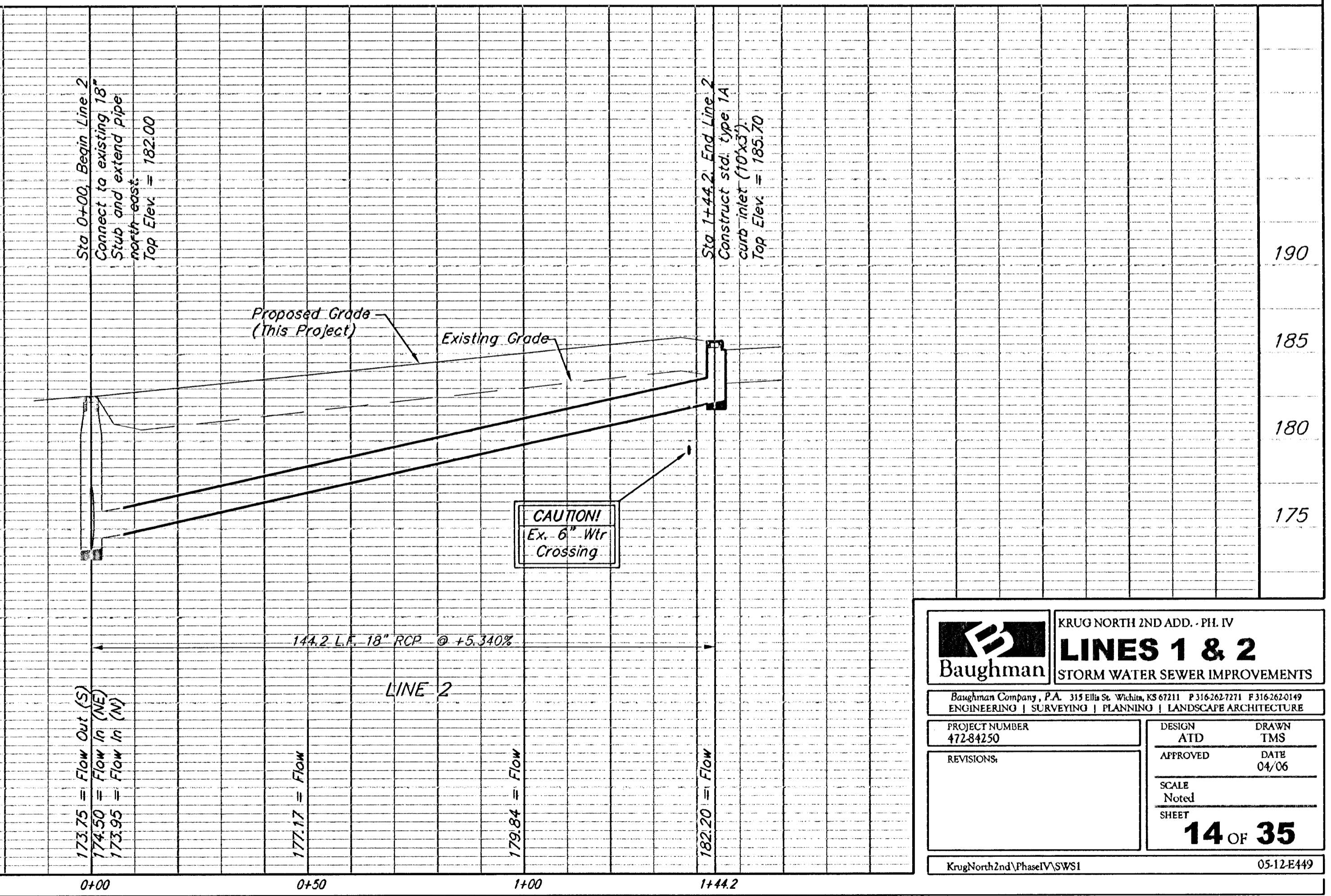
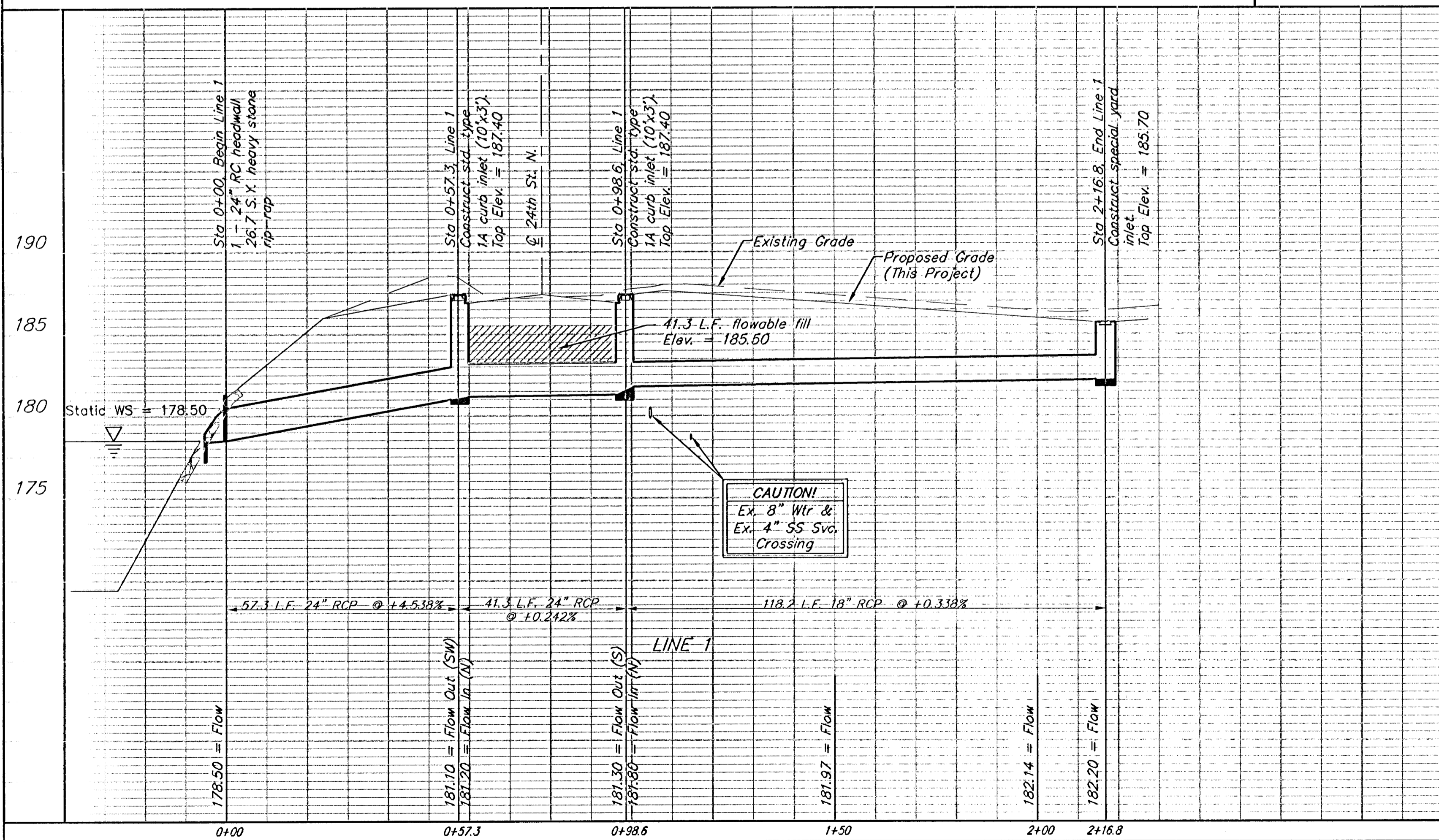
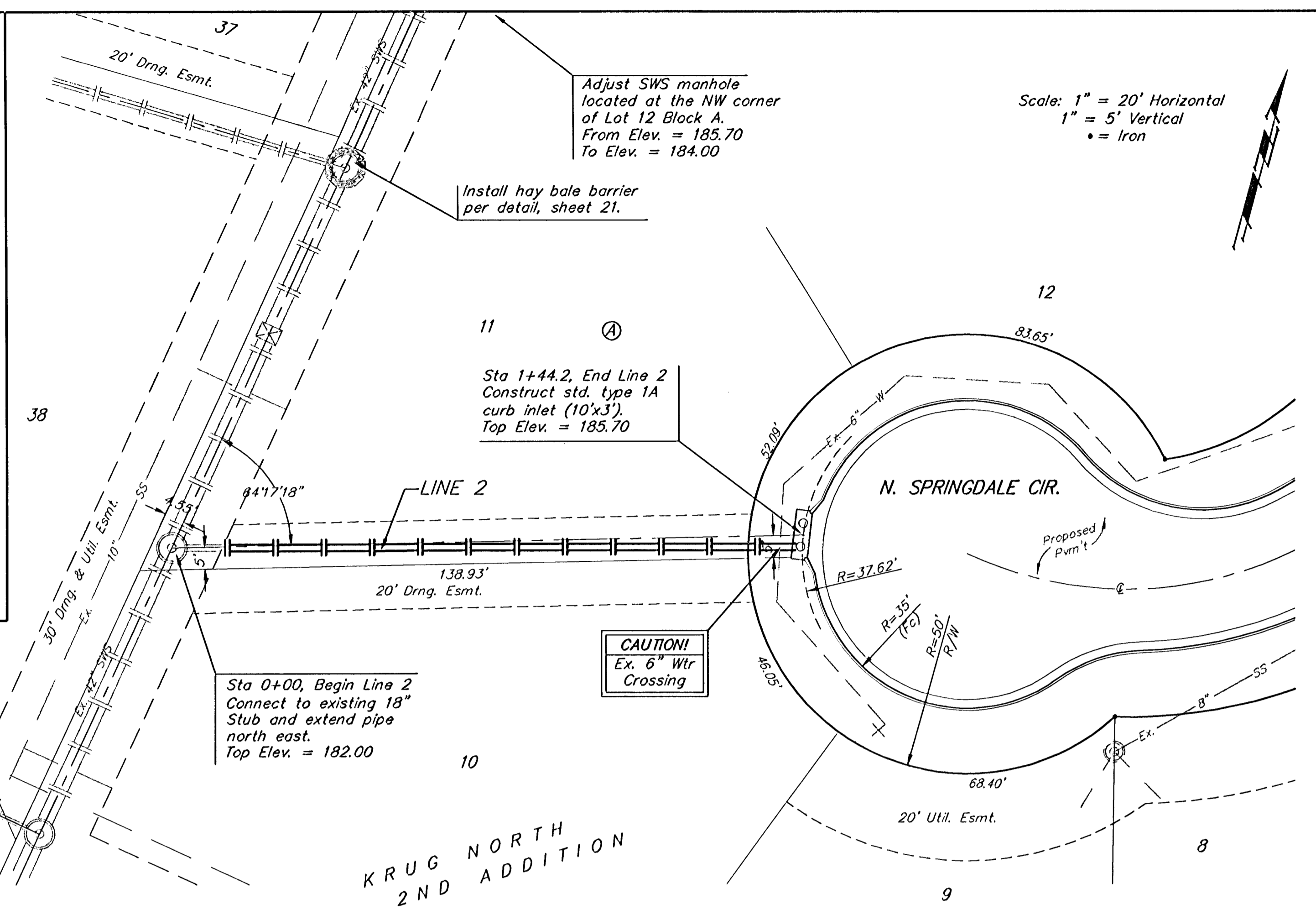
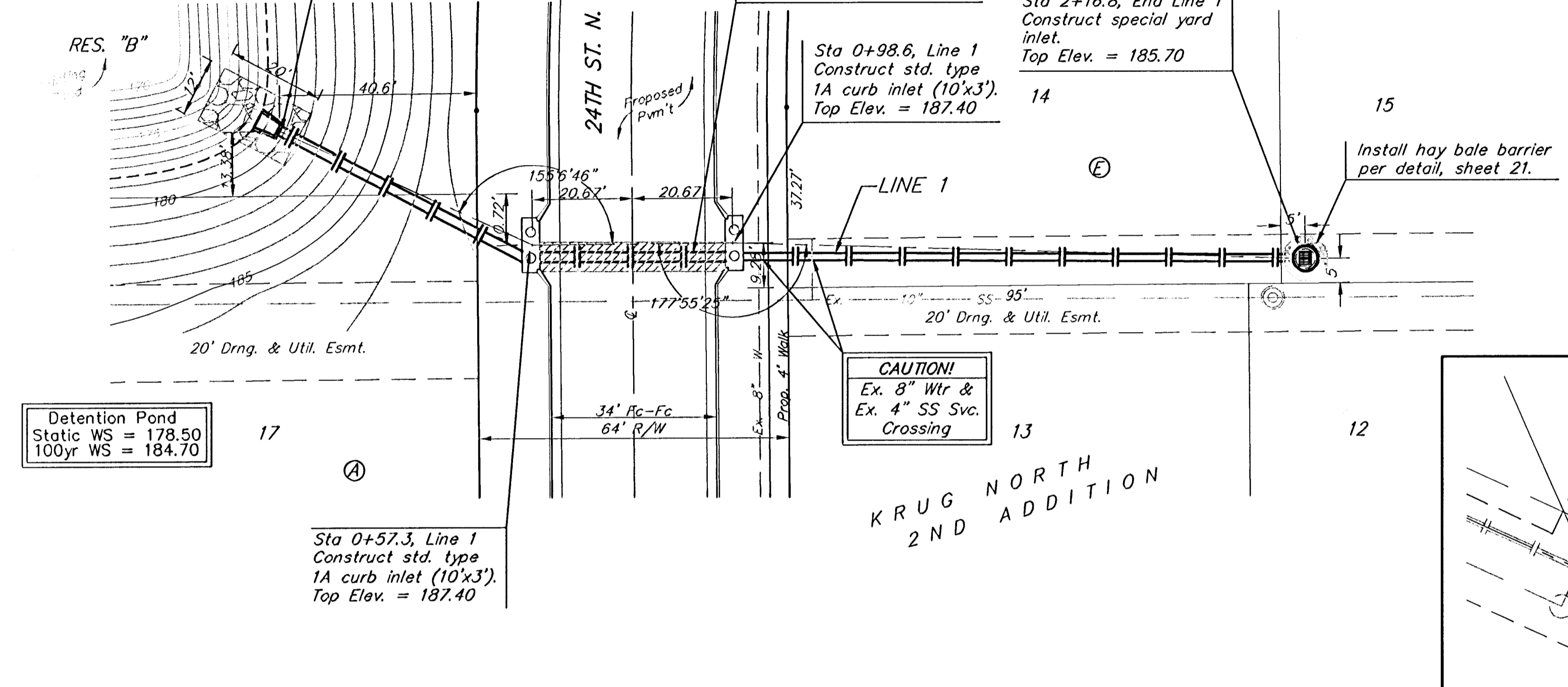
Sta 0+98.6, Line 1
 Construct std. type 1A curb inlet (10'x3').
 Top Elev. = 187.40

Sta 2+16.8, End Line 1
 Construct special yard inlet.
 Top Elev. = 185.70

Sta 0+00, Begin Line 2
 Connect to existing 18" stub and extend pipe north east.
 Top Elev. = 182.00

Sta 1+44.2, End Line 2
 Construct std. type 1A curb inlet (10'x3').
 Top Elev. = 185.70

Scale: 1" = 20' Horizontal
 1" = 5' Vertical
 • = Iron



		KRUG NORTH 2ND ADD. - PH. IV	
		LINES 1 & 2	
STORM WATER SEWER IMPROVEMENTS		Baughman Company, P.A. 315 Ellis St. Wichita, KS 67211 P 316-262-7271 F 316-262-0149 ENGINEERING SURVEYING PLANNING LANDSCAPE ARCHITECTURE	
PROJECT NUMBER 472-84250	DESIGN ATD	DRAWN TMS	
REVISIONS:	APPROVED	DATE 04/06	
	SCALE Noted	SHEET	
	14 OF 35		
KrugNorth2nd\Phase1\SWSI		05-12-8449	