

GENERAL NOTES:

1. Contractor will be required to provide notice to utility companies a minimum of forty-eight (48) hours prior to any excavation, as follows:

Kansas One-Call 687-2470

The Contractor must notify the following in case of an emergency:

- Cox Communications 262-4270
- Kansas Gas Service 1-888-482-4950
- Westar Energy 383-8650
- Aquila Energy 1-800-303-0357
- SDG 268-2245
- City of Wichita Water Dept. 268-4563
- City of Wichita Sewer Maint. 268-4024
- City of Wichita Storm Sewer Maint. 268-4090
- City of Wichita Traffic Maint. 268-4034
- Conoco Phillips Pipeline Co. 1-877-267-2290
- Southern Star Pipeline Co. 529-6600
- Kinder-Morgan Pipeline Co. 1-888-844-5658

2. Utility service lines, poles, valve boxes, meters, and etcetera are to be adjusted as necessary by others prior to construction unless the plans specifically call for their adjustment by the Contractor or unless the plans specifically identify a utility to be adjusted by its owner during construction. Existing utilities and their location, as shown on the plans, represent the best information obtainable for design. The Contractor will be required to work around existing utilities within the right-of-way which do not conflict with proposed construction.

3. Rubble from the removal of miscellaneous structures and excess excavation which is to be wasted shall be disposed of on sites to be provided by the Contractor. These sites shall be approved by the Engineer as to suitability, appearance and site location. Locations, in the opinion of the Engineer, that will leave an unsightly appearance will not be approved. All disposal sites must be approved by the Kansas Department of Health and Environment. Material either stockpiled or disposed of in a flood plain would require a Kansas State Board of Agriculture permit. Any material dumped in waters of the United States or wetlands is subject to U.S. Corps of Engineers permitting regulations. Any material buried or stockpiled beyond approved construction limits would require additional archaeological investigations unless buried in a previously approved borrow location.

4. Trees and shrubs in public right-of-way which are in direct conflict with proposed new construction shall be removed by the Contractor with the Engineer's approval. Trees and shrubs which are not in direct conflict with proposed new construction shall be saved and protected from damage.

5. The Contractor shall give all property owners and/or tenants of developed property abutting the construction of this project a minimum of ten (10) days notice prior to start of construction.

6. The Contractor shall be responsible for preserving property irons. The Contractor will be required to re-establish any property irons which are damaged or destroyed by his construction operations. Such irons shall be re-established by a licensed land surveyor in accordance with state laws.

7. All existing and proposed erosion control measures including silt fencing, erosion control mat, straw bales, inlet barriers, and cost entrance shall be maintained throughout construction by the contractor and until project is accepted by the City of Wichita. The on-site engineer shall complete weekly reports on the status of erosion control measures. The contractor shall be required to comply with maintenance and/or replacement of erosion control measures as determined by the on-site engineer until project is accepted by City of Wichita. Maintenance and/or replacement of erosion control measures to be paid by L.S. bid item "Site Clearing & Restoration".

8. The Contractor shall be responsible for maintaining continuous flow of sewage through construction. Contractor's proposed method for maintaining sewage flow shall be approved by the Engineer. Cost of maintaining flow of sewage through construction will not be paid for directly and this cost shall be considered as subsidiary to the other pay items of work.

9. Contractor shall grade around exposed manholes at a 1:1 slope. Manholes set lower than existing grade shall have a 9" berm constructed around manhole to prevent infiltration into sanitary sewer system. Cost of dirt, labor, equipment, etc. to be incidental to cost of manhole. Easements shall be graded with the street improvement project as part of the mass grading plan.

10. All excess excavation shall be left on site and stockpiled on lots 3-8 block A.

11. The developer for this project is Ritchie Development Corporation, the contact person is Rob Ramsayer, (316) 684-7300.

12. Contractor shall contact Gary Piersall, ConocoPhillips at 838-3411 ext. 14 prior to construction to coordinate required excavation plan for sanitary sewer line construction at Sta. 7+53.5, Line 1.

Lat. 4, Main 11, Four Mile Creek
SANITARY SEWER IMPROVEMENTS

to serve
THE FAIRMONT - PHASE IV
CITY OF WICHITA, KANSAS

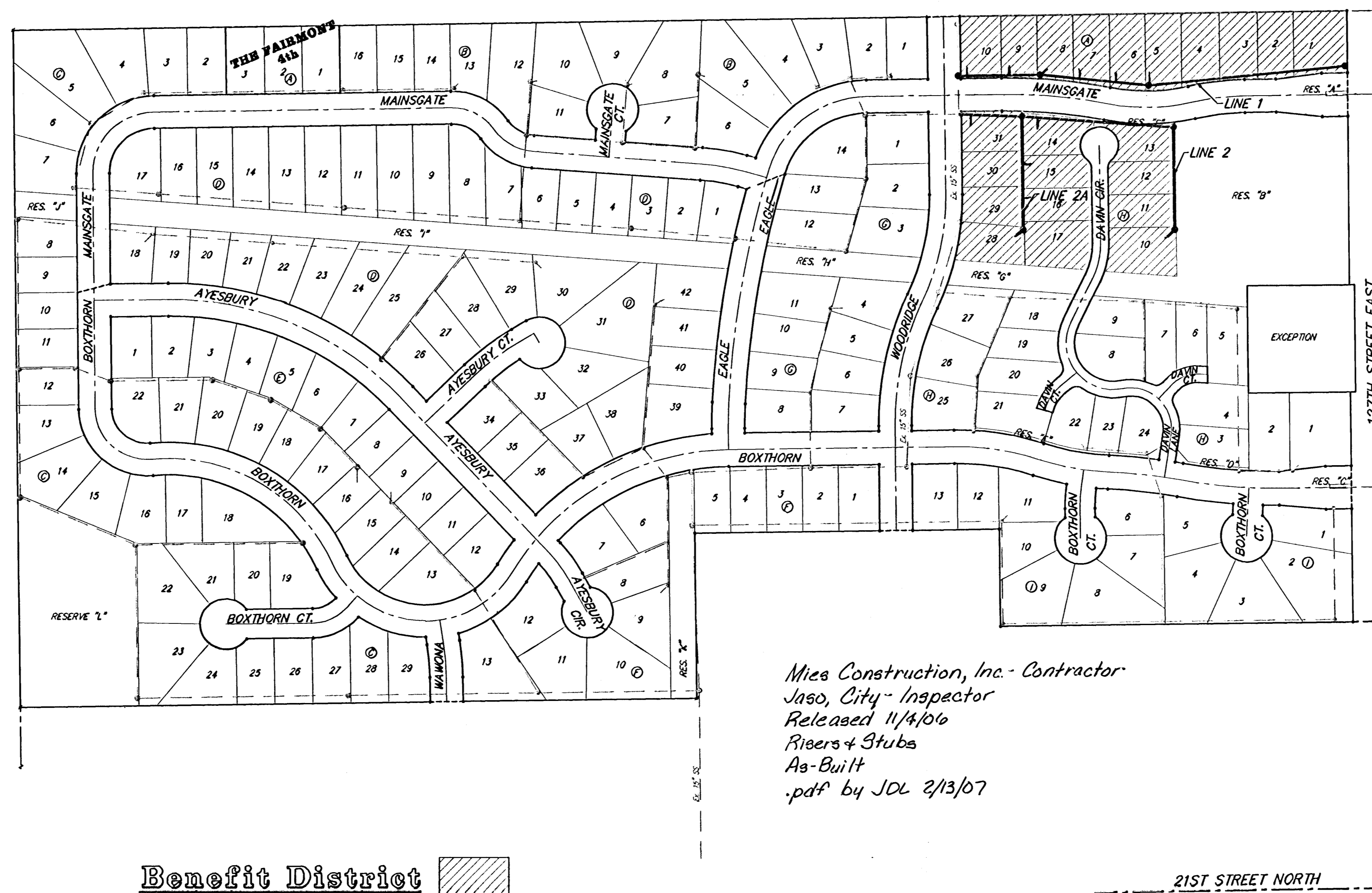
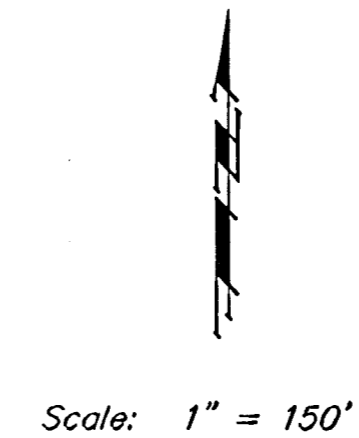
James L. Armor, P.E. City Engineer

Project Number

468-84052

O.C.A. Number

744190



Mies Construction, Inc. - Contractor
Jaso, City - Inspector
Released 11/4/06
Risers & Stubs
As-Built
pdf by JDL 2/13/07

Benefit District

13. All areas disturbed during construction shall be seeded at 300 lbs./acre with Rye Grass immediately following construction in that area. Contractor shall prepare ground per City Specifications.

Benchmarks

BM #1: "+" in the top of curb inlet, located on the west side of Davin Cir. at the NE corner of Lot 18, Block H, Fairmont Addition.
Elev. = 198.18 (MSL)

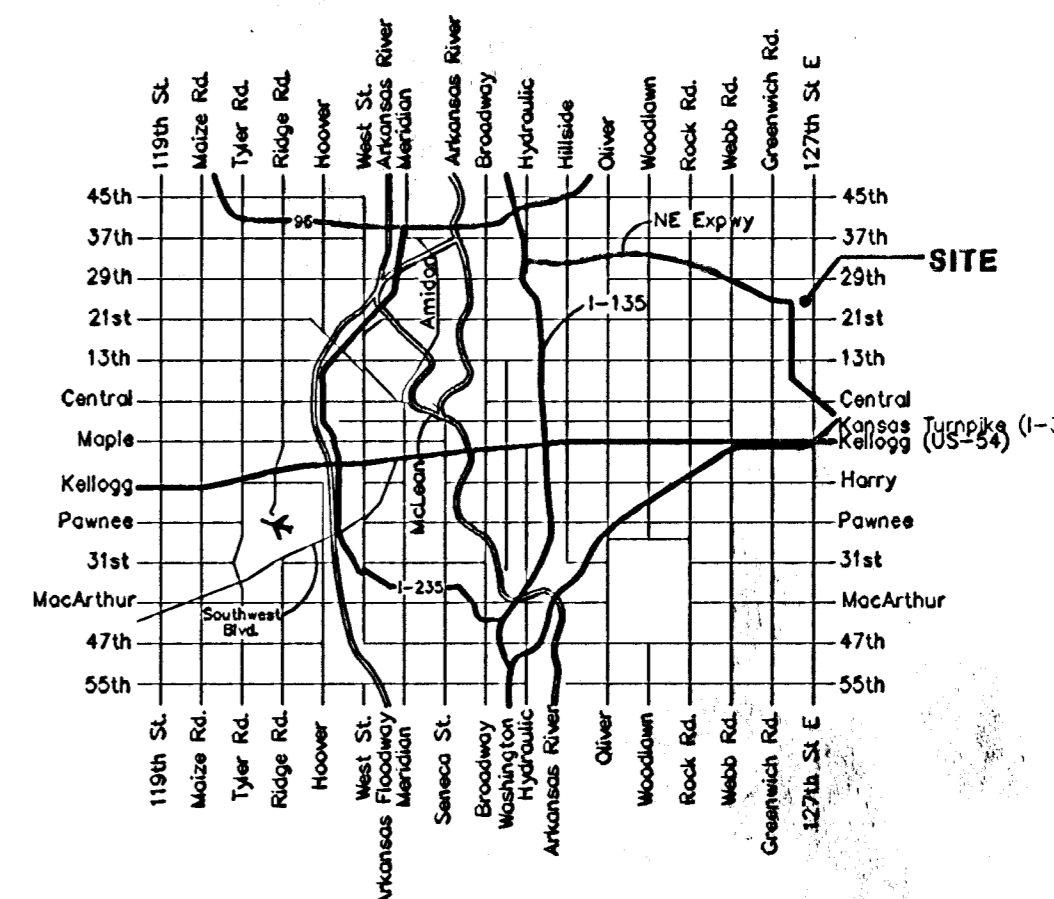
BM #2: "□" on NE corner of inlet structure, located at the SW corner of the intersection of Mainsgate and 127th Street East.
Elev. = 182.33 (MSL)

BM #3: RR spike on the west face of PP on the east side of 127th Street East, adjacent to the south line of The Fairmont Addition.
Elev. = 187.25 (City Datum)

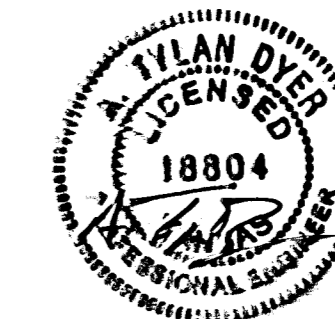
BM #4: RR spike on the east face of PP on the west side of 127th Street East, 37' N and 13' E of the NE corner of Lot 1, Block H, The Fairmont Addition.
Elev. = 189.19 (City Datum)

Sheet Index

Title Sheet	1
Line 1	2
Line 2	3
Line 2A	4
Standard Manhole Detail	5
Shallow Manhole Detail	6
Ring & Cover Detail	7
Riser Detail	8
Erosion Control Plan	9
Erosion Control BMPs	10-13
Coordinate Sheet	14
Copy of Plat	15



Vicinity Map



Baughman Company, P.A. 315 Ellis St. Wichita, KS 67211 P 316-262-7271 F 316-262-0149
ENGINEERING | SURVEYING | PLANNING | LANDSCAPE ARCHITECTURE