

BENCHMARKS:
 BM #1: "+" in the top of curb inlet, located on the west side of Davin Cir. at the NE corner of Lot 18, Block H, Fairmont Addition.
 Elev. = 198.18 (MSL)

BM #2: "□" on NE corner of inlet structure, located at the SW corner of the intersection of Mainsgate and 127th Street East.
 Elev. = 182.33 (MSL)

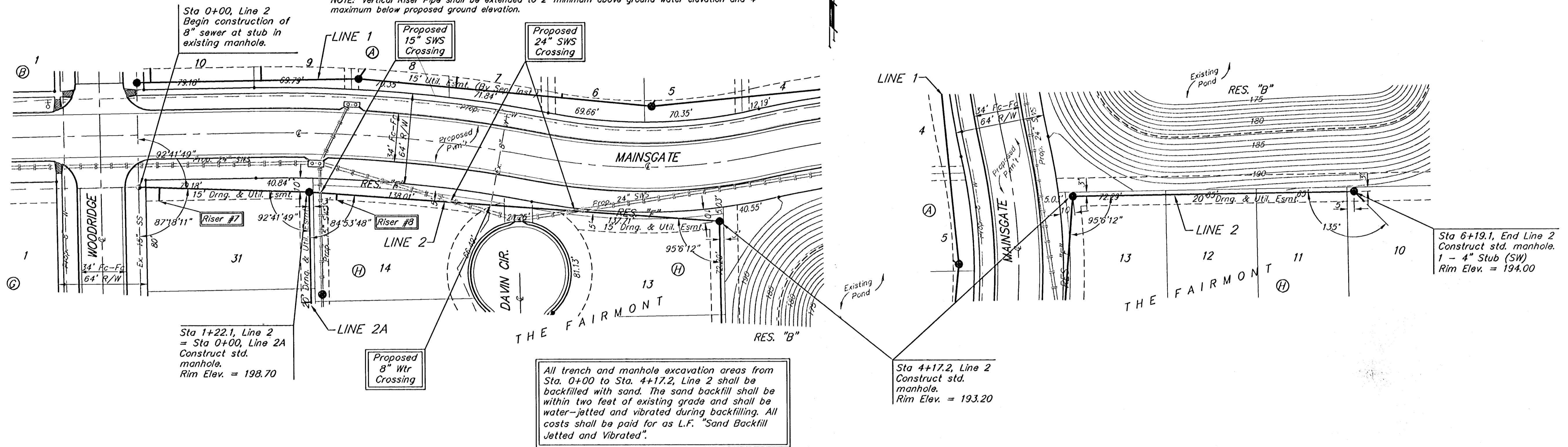
BM #3: RR spike on the west face of PP on the east side of 127th Street East, adjacent to the south line of The Fairmont Addition.
 Elev. = 187.25 (City Datum)

BM #4: RR spike on the east face of PP on the west side of 127th Street East, 37' N and 13' E of the NE corner of Lot 1, Block H, The Fairmont Addition.
 Elev. = 189.19 (City Datum)

SEWER SERVICE TABLE

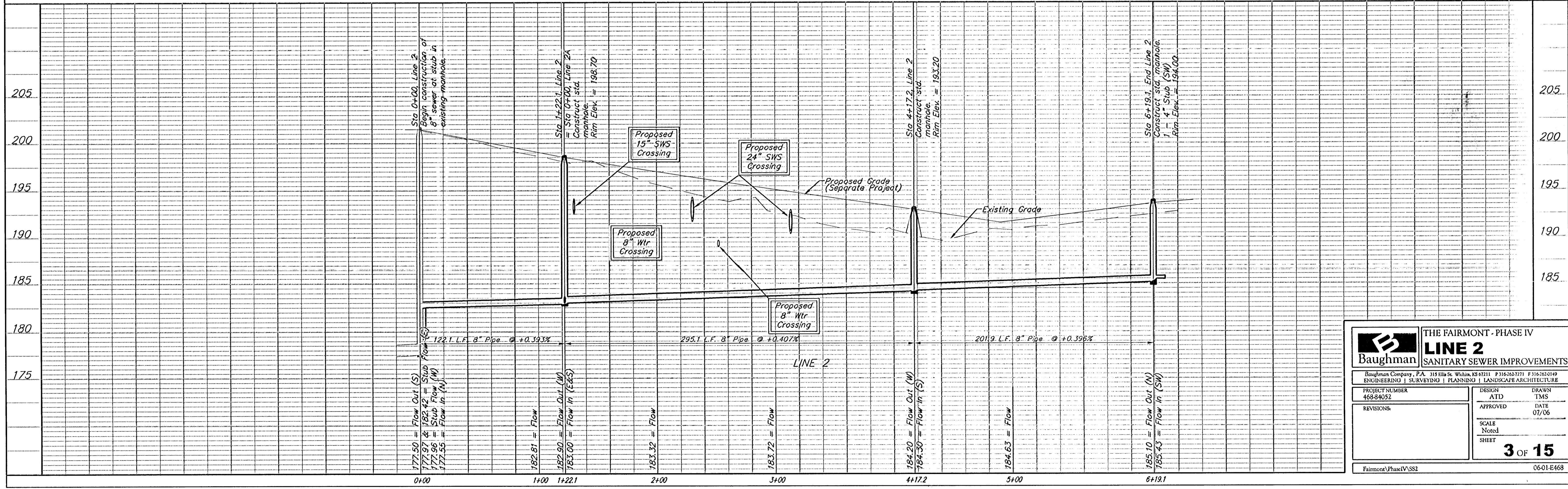
NUMBER	TYPE	LOCATION				FOR INFORMATION ONLY	
		LOT NO.	BLOCK NO.	LINE NO.	STATION	APPROXIMATE LENGTH 4" PIPE	
7	8" X 4" Tee	31	H	2	0+15/RT. 15.3	14.5'	8' 9.3'
8	8" X 4" Tee	14	H	2	1+40/RT. 40.1	9.0'	8' 5.1'

NOTE: Vertical Riser Pipe shall be extended to 2' minimum above ground water elevation and 4' maximum below proposed ground elevation.



Scale: 1" = 40' Horizontal
 1" = 5' Vertical
 • = Iron

All trench and manhole excavation areas from Sta. 0+00 to Sta. 4+17.2, Line 2 shall be backfilled with sand. The sand backfill shall be within two feet of existing grade and shall be water-jetted and vibrated during backfilling. All costs shall be paid for as L.F. "Sand Backfill Jetted and Vibrated".



Baughman THE FAIRMONT - PHASE IV
LINE 2
 SANITARY SEWER IMPROVEMENTS

Baughman Company, P.A. 315 Ellis St. Wichita, KS 67211 P 316-262-7771 F 316-262-0149
 ENGINEERING | SURVEYING | PLANNING | LANDSCAPE ARCHITECTURE

PROJECT NUMBER 468-84032	DESIGN ATD	DRAWN TMS
REVISIONS:	APPROVED	DATE 07/06
SCALE Noted		SHEET 3 OF 15

FairmontPhaseIVSS2 0601E468