

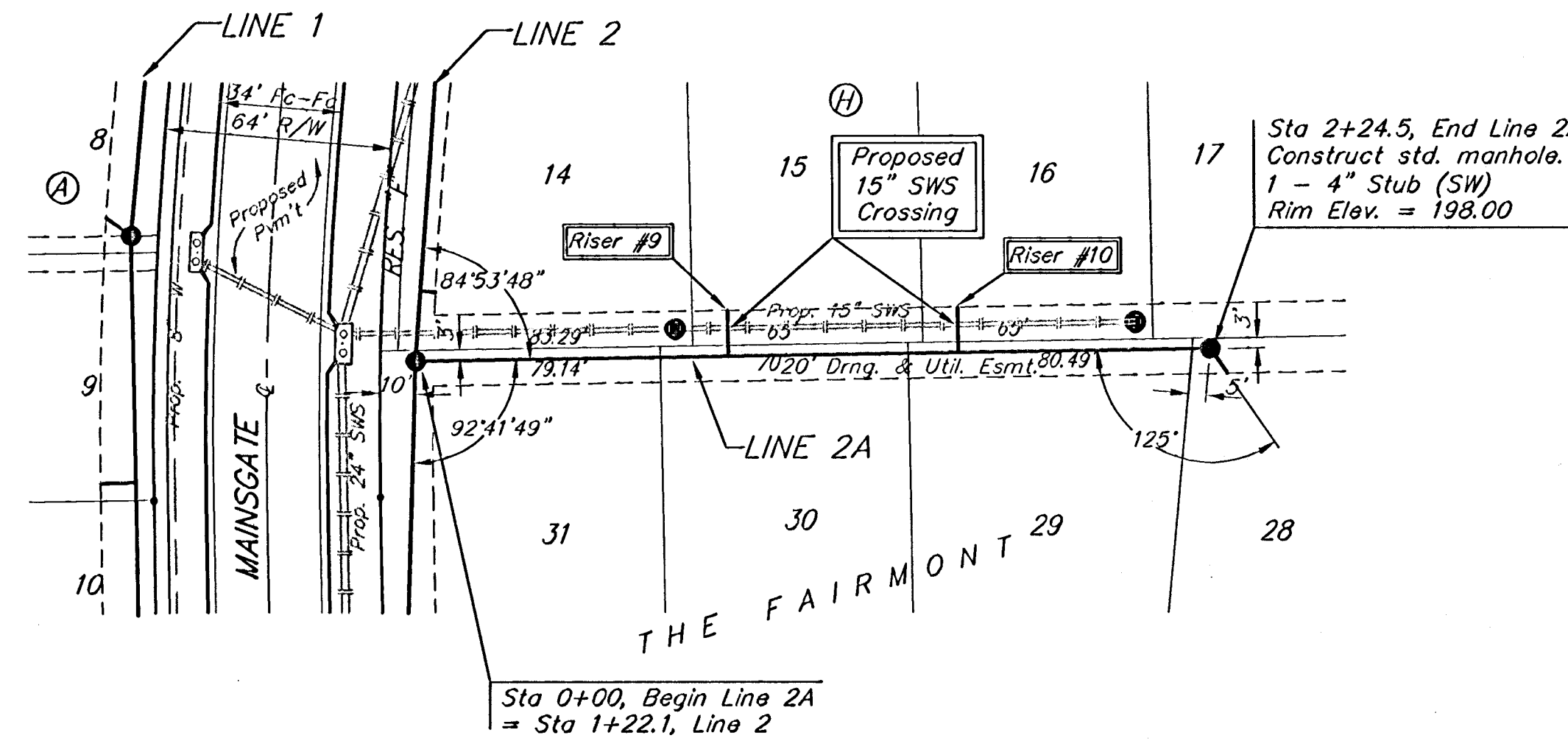
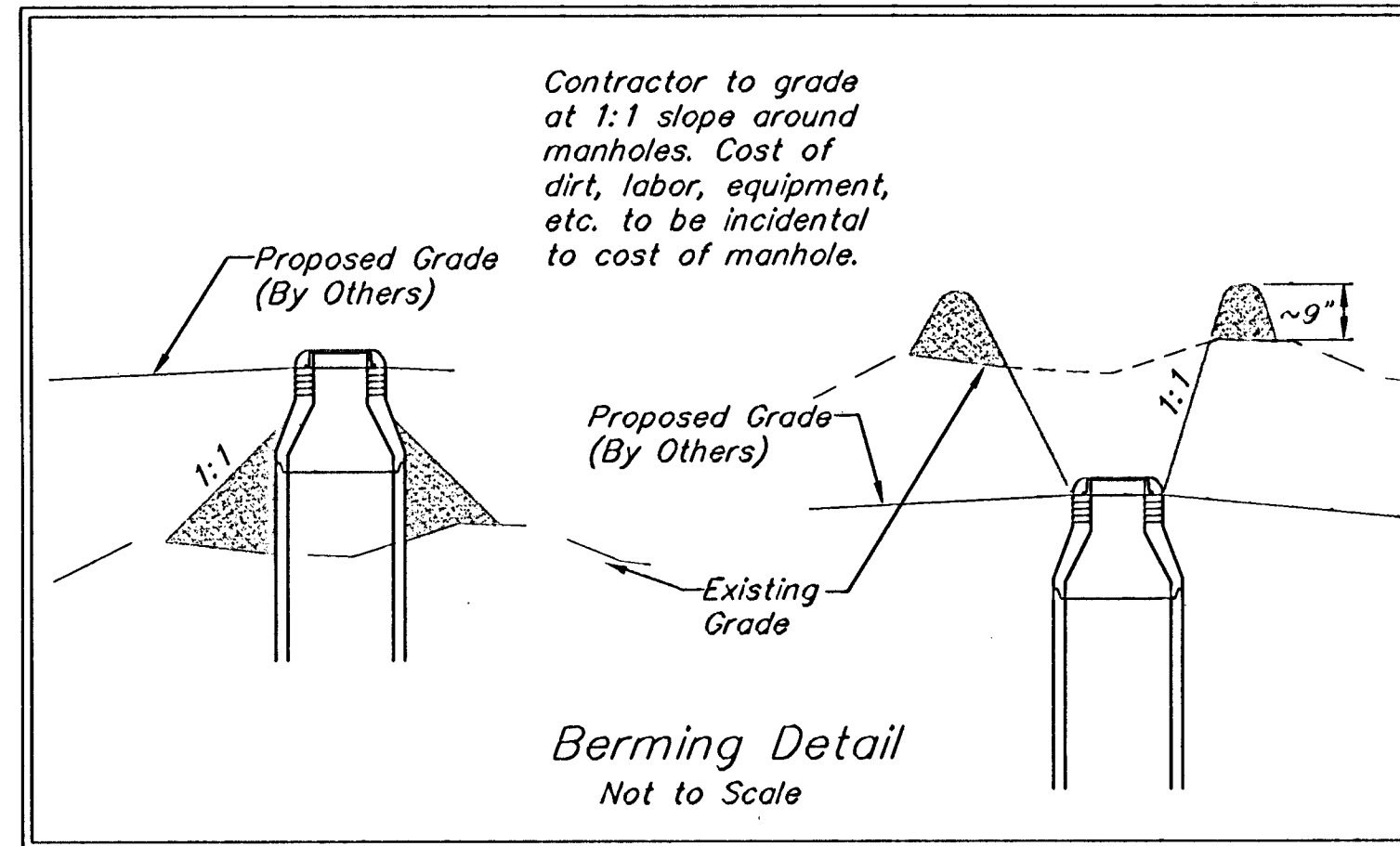
BENCHMARKS:
 BM #1: "+" in the top of curb inlet, located on the west side of Davin Cir. at the NE corner of Lot 18, Block H, Fairmont Addition.
 Elev. = 198.18 (MSL)

BM #2: "□" on NE corner of inlet structure, located at the SW corner of the intersection of Mainsgate and 127th Street East.
 Elev. = 182.33 (MSL)

BM #3: RR spike on the west face of PP on the east side of 127th Street East, adjacent to the south line of The Fairmont Addition.
 Elev. = 187.25 (City Datum)

BM #4: RR spike on the east face of PP on the west side of 127th Street East, 37' N and 13' E of the NE corner of Lot 1, Block H, The Fairmont Addition.
 Elev. = 189.19 (City Datum)

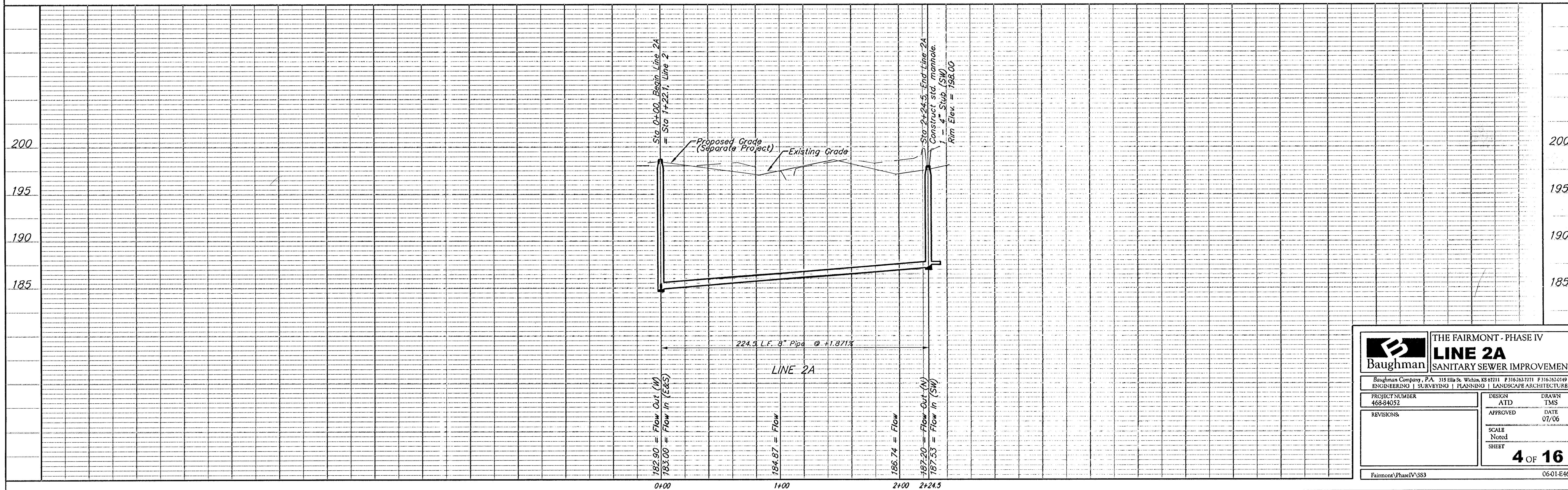
Scale: 1" = 40' Horizontal
 1" = 5' Vertical
 • = Iron



SEWER SERVICE TABLE

NUMBER	TYPE	LOCATION			FOR INFORMATION ONLY	
		LOT NO.	BLOCK NO.	LINE NO.	STATION \ DIRECTION	APPROXIMATE LENGTH 4" PIPE
9	8" X 4" Tee	15	H	2A	0+88/L1.90, 7	VERTICAL 8.5' HORIZONTAL 13'13.2'
10	8" X 4" Tee	16	H	2A	1+53/L1.15, 4	VERTICAL 9.0' HORIZONTAL 13'12.9'

NOTE: Vertical Riser Pipe shall be extended to 2' minimum above ground water elevation and 4' maximum below proposed ground elevation.



Baughman THE FAIRMONT - PHASE IV
LINE 2A
 SANITARY SEWER IMPROVEMENTS

Baughman Company, P.A. 315 Ellis St. Wichita, KS 67211 P 316-262-7271 F 316-262-0149
 ENGINEERING | SURVEYING | PLANNING | LANDSCAPE ARCHITECTURE

PROJECT NUMBER 460-84032	DESIGN ATD	DRAWN TMS
REVISIONS:	APPROVED	DATE 07/06
SCALE Noted		SHEET
		4 OF 16

FairmontPhaseIVSS3 0601E468