

**BENCHMARKS:**

BM #1: C.O.W. disc at SW corner of intersection.  
30.00'± S. of CL of 13th St. N.  
35.00'± W. of CL of 135th St. W.  
Elev. = 168.25 City Datum

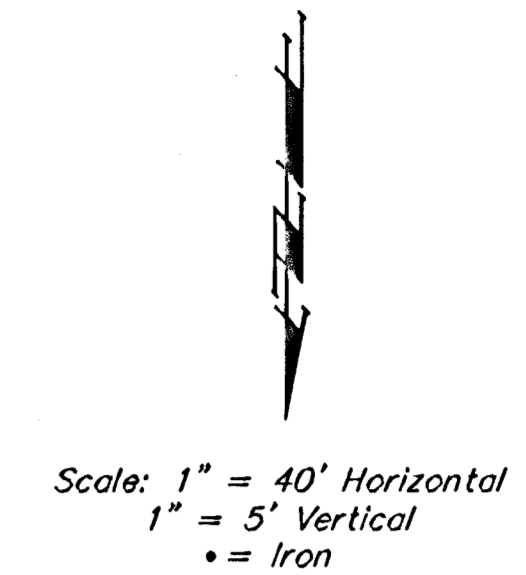
BM #2: Small RR spike in 4th HLP  
W. of 135th St. W. on south side of 13th St. N. (N. face of HLP).  
Elev. = 179.24 City Datum

BM #3: RR spike in Power Pole.  
1321.65 W. of 135th St. W.  
30' N. of 13th St. N.  
Elev. = 178.45 City Datum

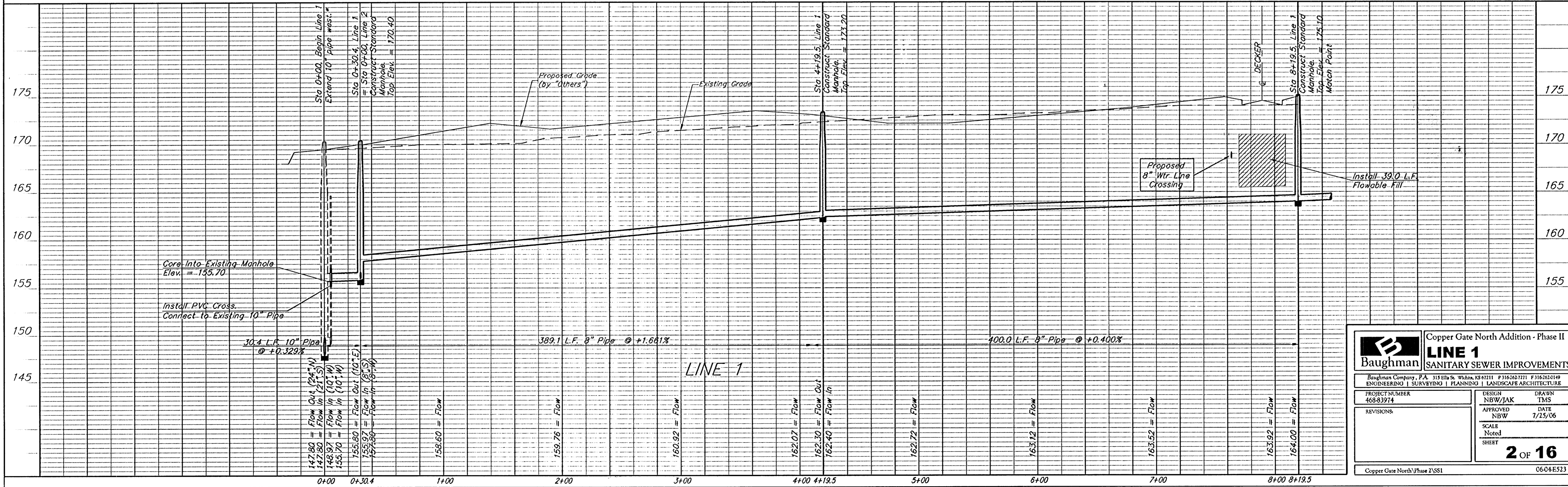
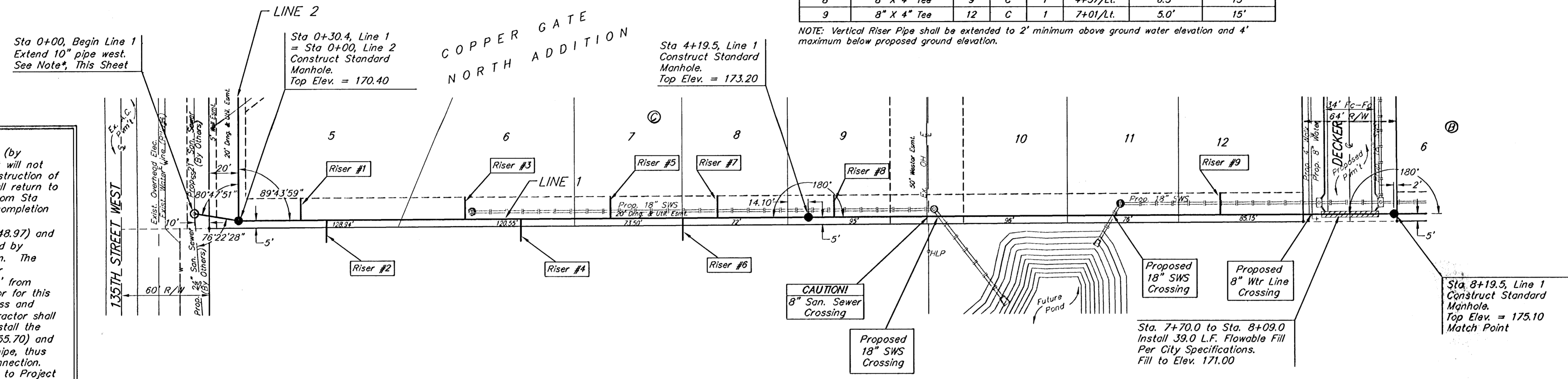
**SEWER SERVICE TABLE**

NUMBER	TYPE	LOCATION			FOR INFORMATION ONLY	
		LOT NO.	BLOCK NO.	LINE NO.	STATION/DIRECTION	APPROXIMATE LENGTH 4" PIPE
1	8" X 4" Tee	5	C	1	0+73/Lt.	11.5'
2	8" X 4" Tee	N/A	N/A	1	0+90/Rt.	10.0'
3	8" X 4" Tee	6	C	1	1+85/Lt.	10.0'
4	8" X 4" Tee	N/A	N/A	1	2+23/Rt.	10.0'
5	8" X 4" Tee	7	C	1	2+84/Lt.	8.5'
6	8" X 4" Tee	N/A	N/A	1	3+34/Rt. 32'	8.0'
7	8" X 4" Tee	8	C	1	3+57/Lt.	8.0'
8	8" X 4" Tee	9	C	1	4+37/Lt.	6.5'
9	8" X 4" Tee	12	C	1	7+01/Lt.	5.0'

NOTE: Vertical Riser Pipe shall be extended to 2' minimum above ground water elevation and 4' maximum below proposed ground elevation.



**NOTE\***  
The 24" Sanitary Sewer Main (by others) in 135th Street West will not be complete at time of construction of this project. Contractor shall return to the site and install Line 1 from Sta 0+00 to Sta 0+30.4 after completion of 24" sewer.  
Lower connection (Elev. = 148.97) and 10" riser pipe will be installed by "Others" with 24" sewer main. The 10" riser pipe from the lower connection will extend up 15' from base of manhole. Contractor for this project shall install PVC Cross and connect to 10" Riser. Contractor shall core into the manhole to install the upper connection (Elev. = 155.70) and seal and grout around 10" pipe, thus creating an outside drop connection. This Work Shall be Incidental to Project Cost.



**Baughman** ENGINEERING | SURVEYING | PLANNING | LANDSCAPE ARCHITECTURE

**Copper Gate North Addition - Phase II**  
**LINE 1**  
**SANITARY SEWER IMPROVEMENTS**

PROJECT NUMBER: 4683974  
DESIGN: NBW/JAK  
DRAWN: TMS  
APPROVED: NBW  
DATE: 7/25/06  
SCALE: Noted  
SHEET: 2 OF 16

Copper Gate North Phase 2/SSI 06-04-E523