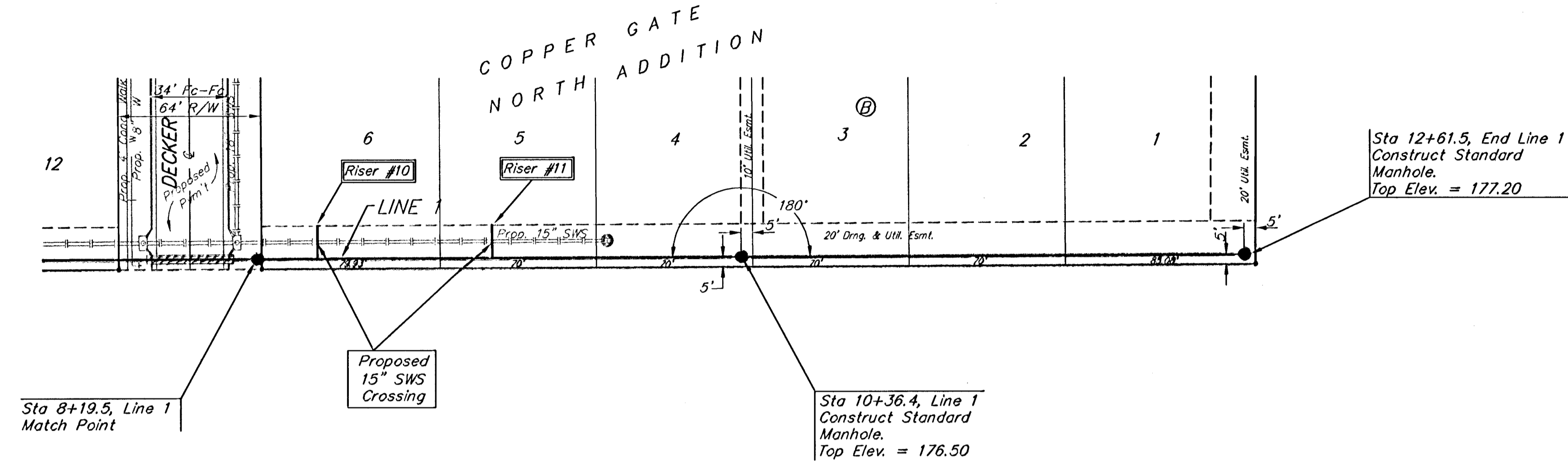
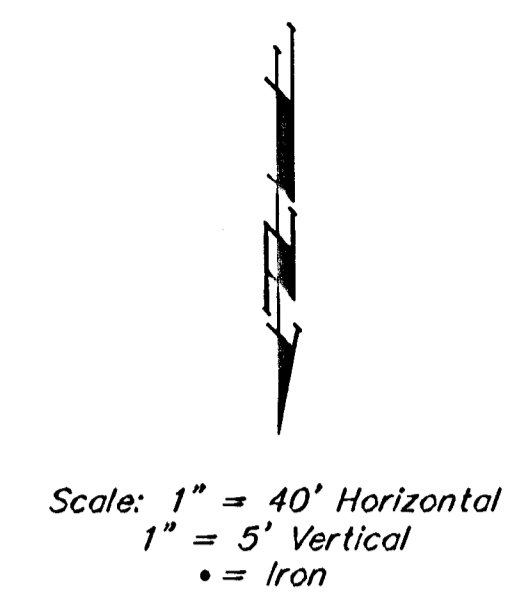


BENCHMARKS:

BM #1: C.O.W. disc at SW corner of intersection.
30.00'± S. of CL of 13th St. N.
35.00'± W. of CL of 135th St. W.
Elev. = 168.25 City Datum

BM #2: Small RR spike in 4th HLP
W. of 135th St. W. on south side of 13th St. N. (N. face of HLP).
Elev. = 179.24 City Datum

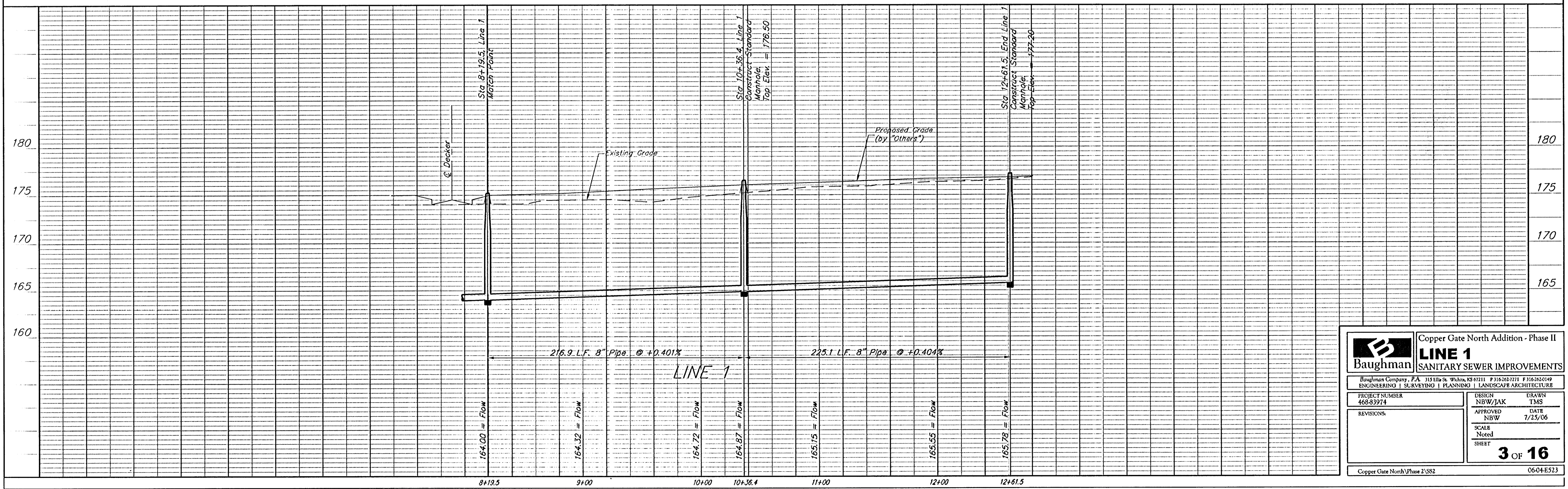
BM #3: RR spike in Power Pole.
1321.65 W. of 135th St. W.
30' N. of 13th St. N.
Elev. = 178.45 City Datum



SEWER SERVICE TABLE

NUMBER	TYPE	LOCATION			FOR INFORMATION ONLY	
		LOT NO.	BLOCK NO.	LINE NO.	STATION/DIRECTION	APPROXIMATE LENGTH 4" PIPE
10	8" X 4" Tee	6	C	1	8+46/Lt.	5.0' 15'
11	8" X 4" Tee	5	C	1	9+24/Lt.	7.0' 15'

NOTE: Vertical Riser Pipe shall be extended to 2' minimum above ground water elevation and 4' maximum below proposed ground elevation.



	Copper Gate North Addition - Phase II	
	LINE 1	
SANITARY SEWER IMPROVEMENTS		
<small>Baughman Company, P.A. 315 18th St. Wichita, KS 67211 P 316-262-3221 F 316-262-0149 ENGINEERING SURVEYING PLANNING LANDSCAPE ARCHITECTURE</small>		
PROJECT NUMBER 468-83974	DESIGN NBW/JAK	DRAWN TMS
REVISIONS:	APPROVED NBW	DATE 7/25/06
SCALE Noted	SHEET 3 OF 16	
<small>Copper Gate North Phase 2/SS2 0604-E523</small>		