

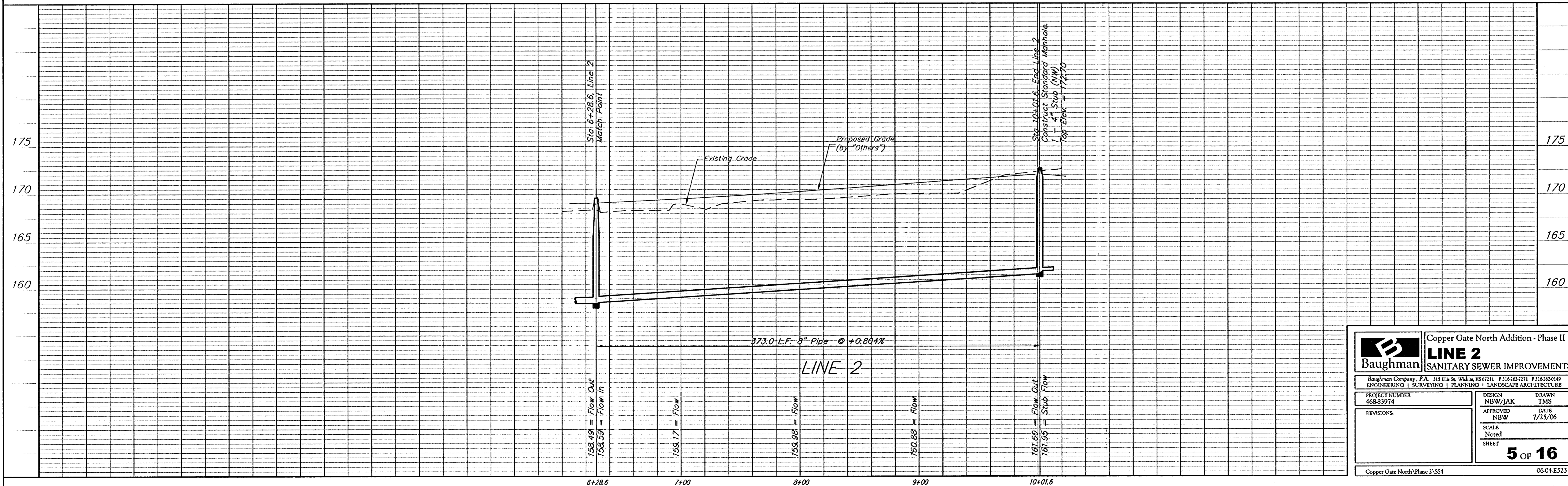
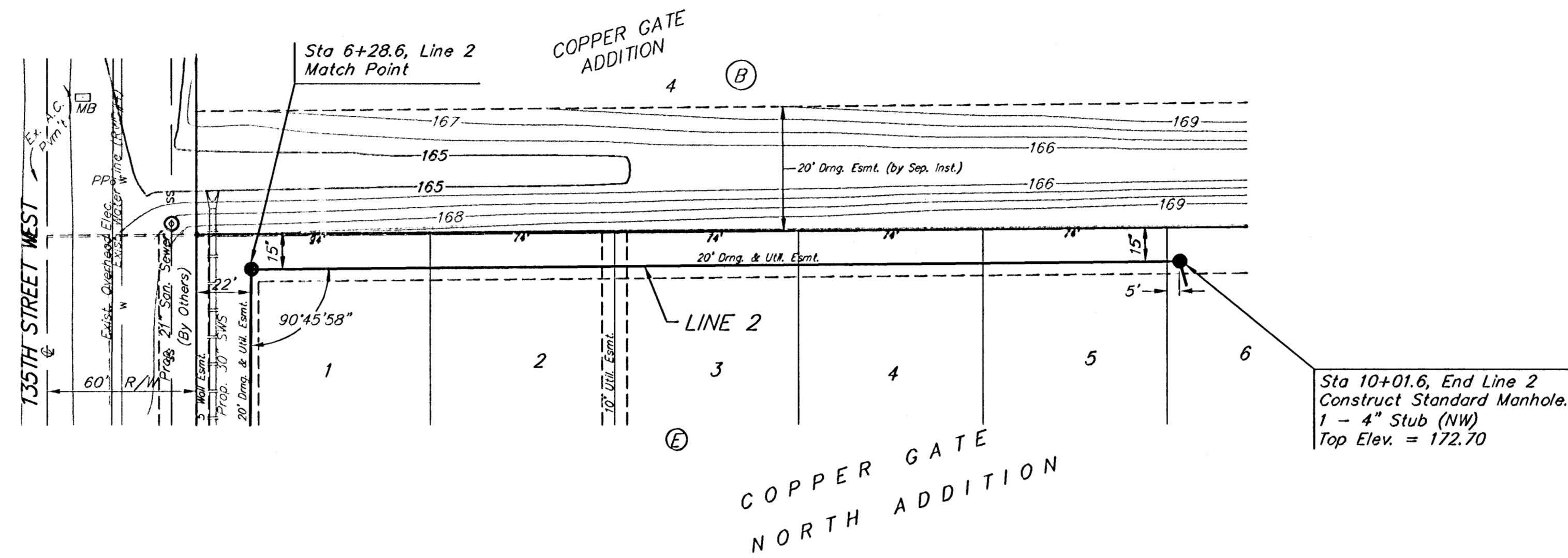
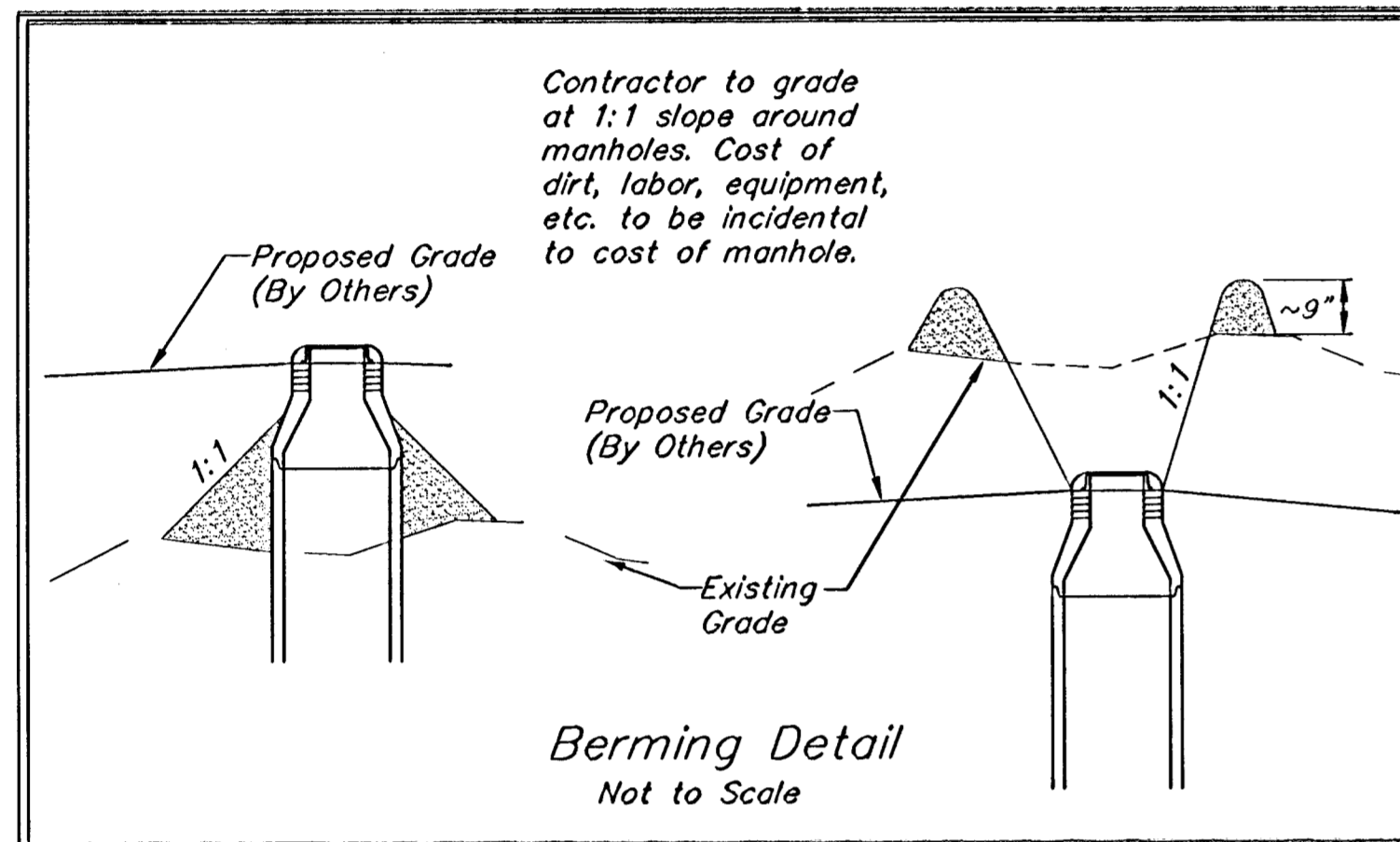
BENCHMARKS:

BM #1: C.O.W. disc at SW corner of intersection.
30.00'± S. of CL of 13th St. N.
35.00'± W. of CL of 135th St. W.
Elev. = 168.25 City Datum

BM #2: Small RR spike in 4th HLP
W. of 135th St. W. on south side
of 13th St. N. (N. face of HLP).
Elev. = 179.24 City Datum

BM #3: RR spike in Power Pole.
1321.65 W. of 135th St. W.
30' N. of 13th St. N.
Elev. = 178.45 City Datum

↑
Scale: 1" = 40' Horizontal
1" = 5' Vertical
• = Iron



		Copper Gate North Addition - Phase II	
		LINE 2	
Baughman Company, P.A. 315 E 11th St. Wichita, KS 67211 P 316-262-7271 F 316-262-0149 ENGINEERING SURVEYING PLANNING LANDSCAPE ARCHITECTURE		SANITARY SEWER IMPROVEMENTS	
PROJECT NUMBER 468-83974	DESIGN NBW/JAK	DRAWN TMS	
REVISIONS	APPROVED NBW	DATE 7/25/06	
SCALE Noted		SHEET 5 OF 16	
Copper Gate North Phase 2/SS4		0604-E523	