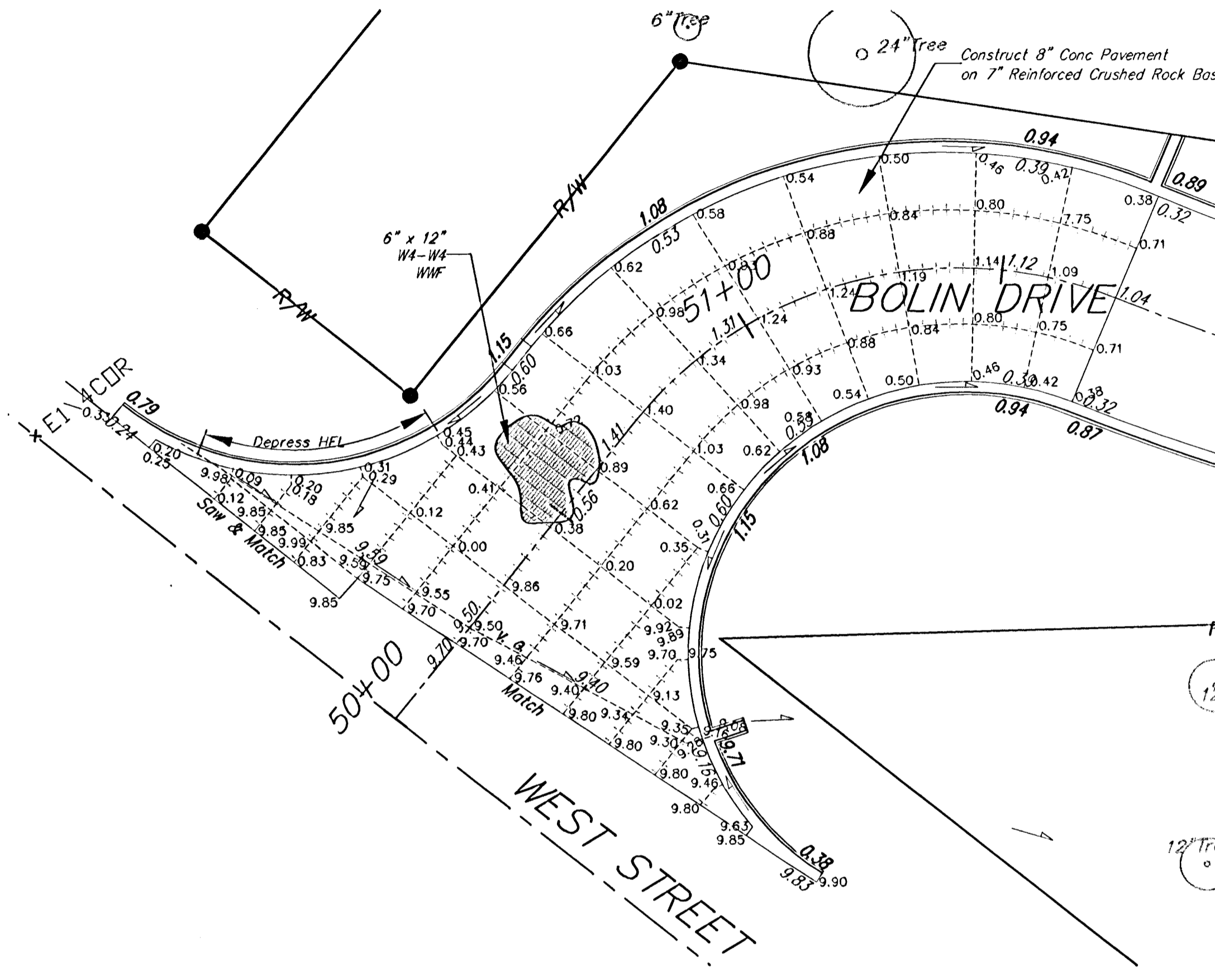
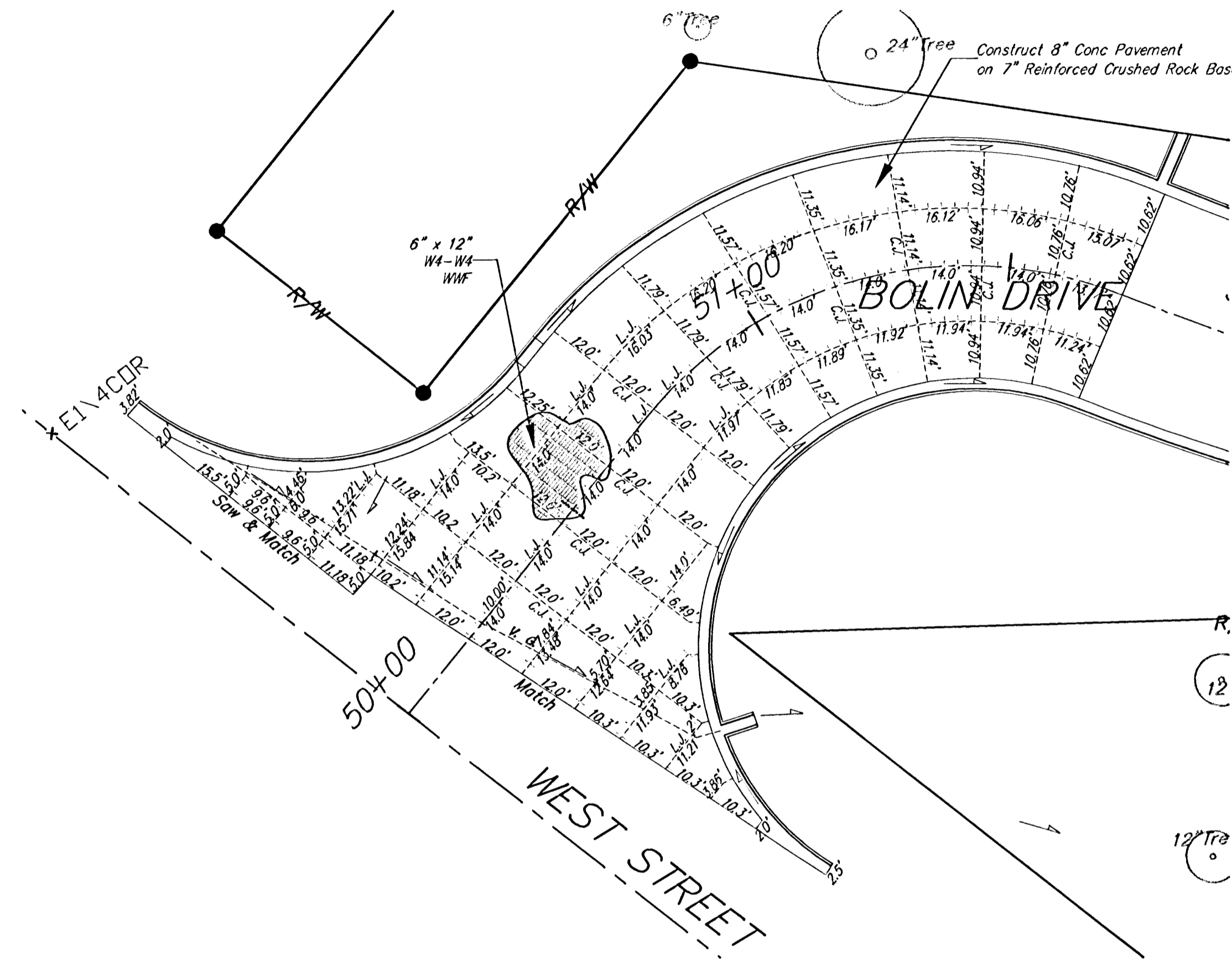
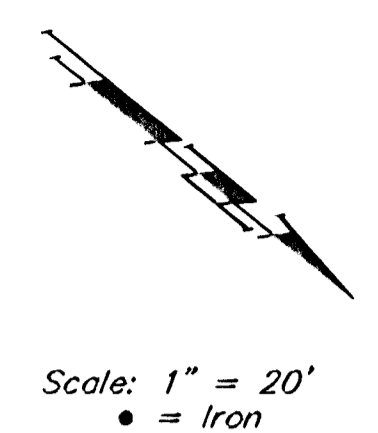
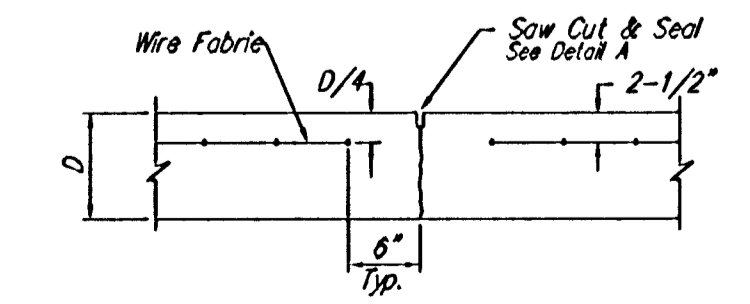
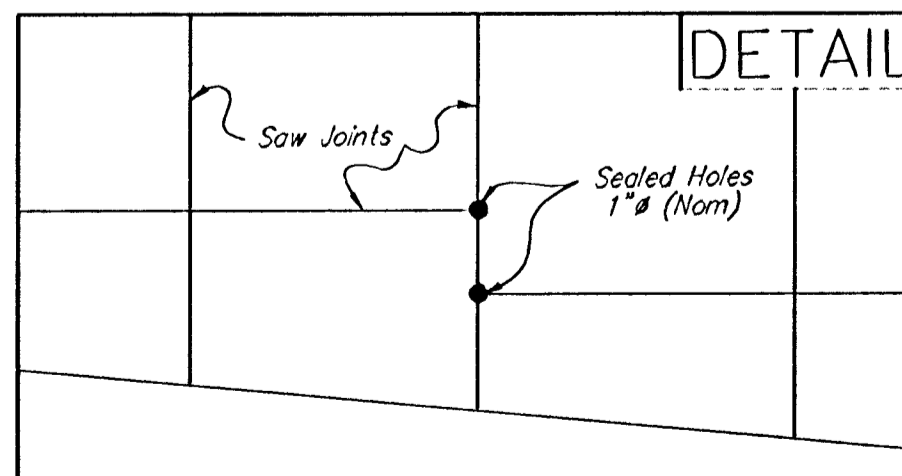


Benchmarks:
 City of Wichita Benchmark located at the NE Corner of West Street and MacArthur (39th St. South)
 Elevation = 99.46 (City Datum)

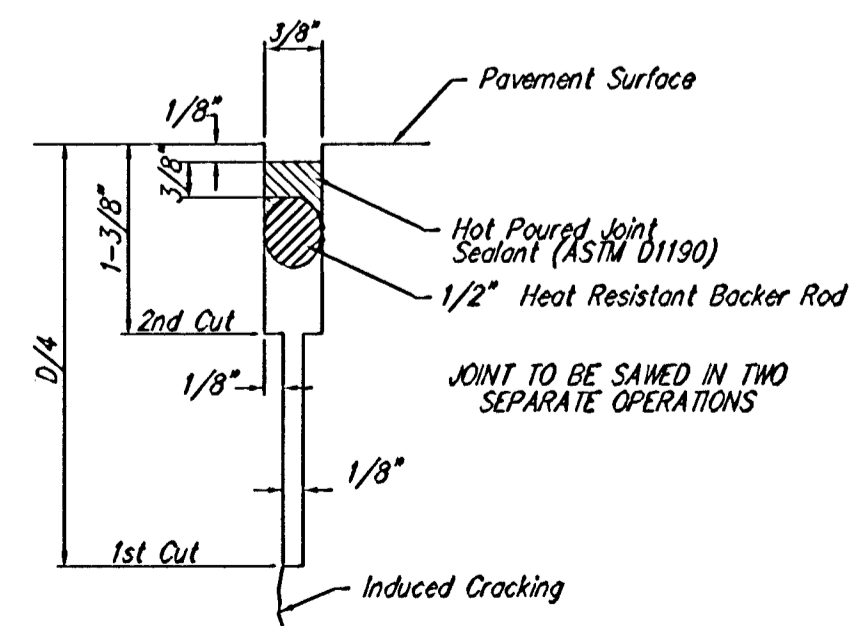
City of Wichita Benchmark located at West Street and I-235 (Approx. 35th St. South) on NW Corner of RCB, Top Corral Rail.
 Elevation = 104.78 (City Datum)



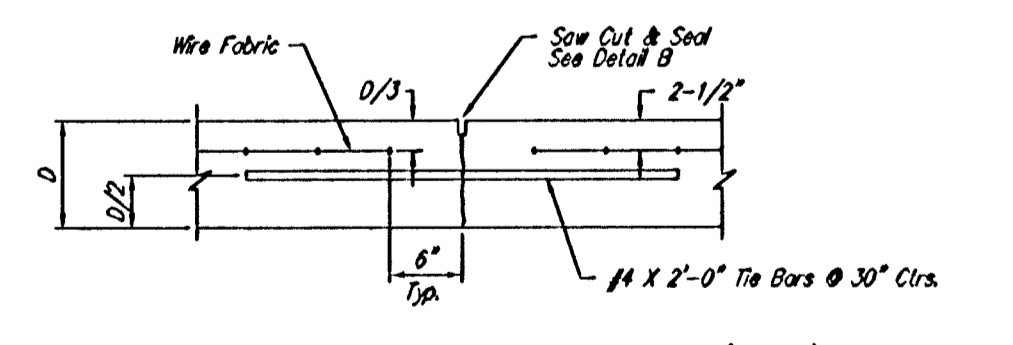
TYPICAL CONCRETE PAVEMENT SECTION



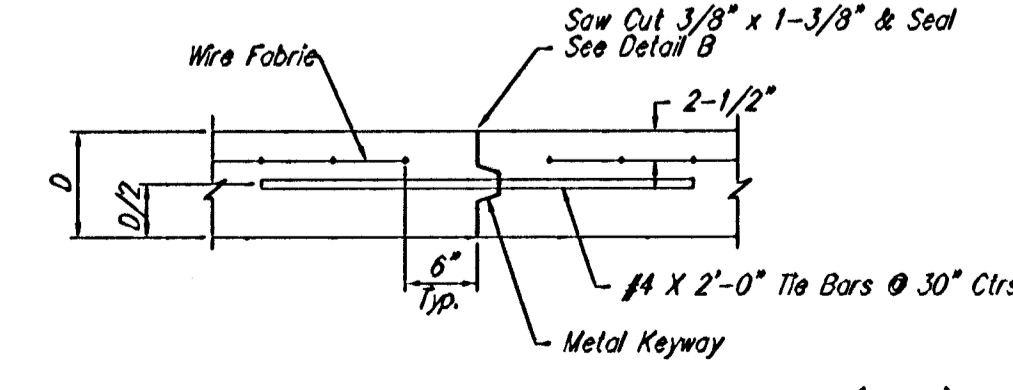
CONTRACTION JOINT DETAIL (C.J.)



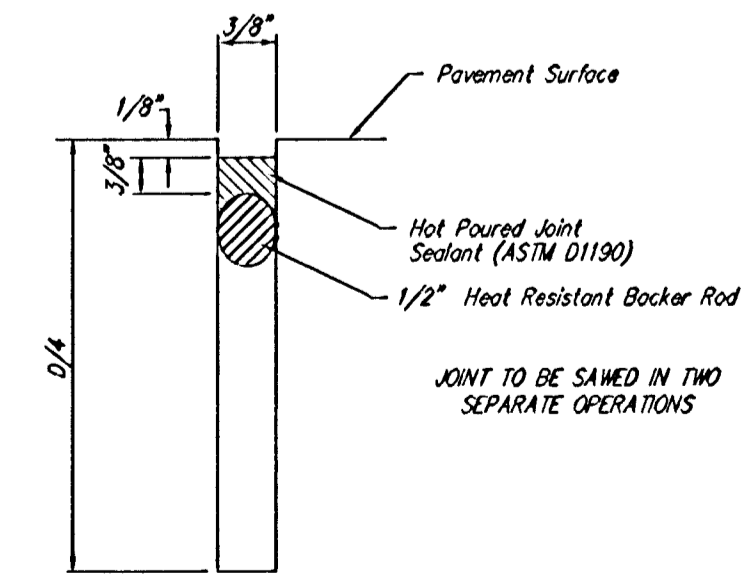
SAW JOINT DETAIL "A"



LONGITUDINAL JOINT DETAIL (L.J.)



OPTIONAL LONGITUDINAL JOINT DETAIL (L.J.) (CONSTRUCTION JOINT)



SAW JOINT DETAIL "B"

NOTE
 At all locations where joints are not congruent through pavement sections, Contractor shall drill full pavement depth & seal. (See Detail This Sheet)

		BLUE LAKE ADDITION Joint Plan Street Improvements	
		<small>Baughman Company, P.A. 315 Ellis St. Wichita, KS 67211 P 316-262-7771 F 316-262-0149 ENGINEERING SURVEYING PLANNING LANDSCAPE ARCHITECTURE</small>	
PROJECT NUMBER 472-84078	DESIGN KK	DRAWN TCA	
REVISIONS:	APPROVED JFB	DATE 04/06	
	SCALE Noted	SHEET	
		8 OF 18	
<small>E:\eng\Bolin Drive - Blue Lake Add\Bolin1_basomms.dwg</small>		<small>04-07-0005</small>	