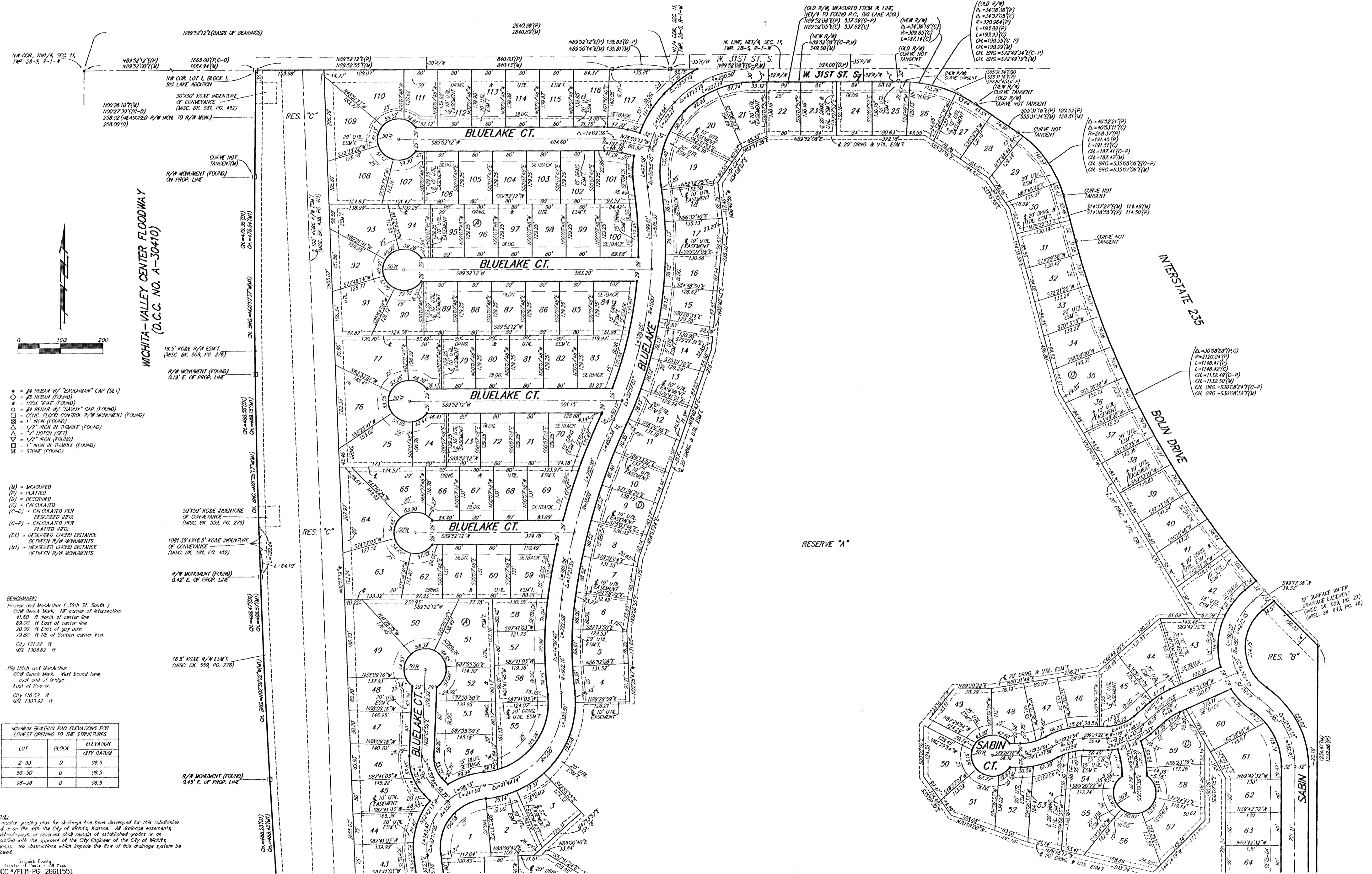


# BLUE LAKE ADDITION

## WICHITA, SEDGWICK COUNTY, KANSAS



N89°52'12"(B) 1685.00'(C-D)  
 1684.24'(M)  
 NW COR. LOT 1, BLOCK 1,  
 BLUE LAKE ADDITION  
 50'x50' K&AE ADJUTMENT  
 OF CONVEYANCE  
 (MISC. BK. 581, PG. 452)  
 N00°29'10"(M)  
 N00°29'10"(C-D)  
 258.02'(MEASURED R/W MON. TO R/W MON.)  
 258.00'(D)

RES. "C"  
 16.5' K&AE R/W ESM'T.  
 (MISC. BK. 559, PG. 278)  
 R/W MONUMENT (FOUND)  
 0.19' E. OF PROP. LINE

RES. "C"  
 16.5' K&AE R/W ESM'T.  
 (MISC. BK. 559, PG. 278)  
 R/W MONUMENT (FOUND)  
 0.19' E. OF PROP. LINE

RES. "C"  
 16.5' K&AE R/W ESM'T.  
 (MISC. BK. 559, PG. 278)  
 R/W MONUMENT (FOUND)  
 0.19' E. OF PROP. LINE

RES. "C"  
 16.5' K&AE R/W ESM'T.  
 (MISC. BK. 559, PG. 278)  
 R/W MONUMENT (FOUND)  
 0.19' E. OF PROP. LINE

RES. "C"  
 16.5' K&AE R/W ESM'T.  
 (MISC. BK. 559, PG. 278)  
 R/W MONUMENT (FOUND)  
 0.19' E. OF PROP. LINE

RES. "C"  
 16.5' K&AE R/W ESM'T.  
 (MISC. BK. 559, PG. 278)  
 R/W MONUMENT (FOUND)  
 0.19' E. OF PROP. LINE

RES. "C"  
 16.5' K&AE R/W ESM'T.  
 (MISC. BK. 559, PG. 278)  
 R/W MONUMENT (FOUND)  
 0.19' E. OF PROP. LINE

RES. "C"  
 16.5' K&AE R/W ESM'T.  
 (MISC. BK. 559, PG. 278)  
 R/W MONUMENT (FOUND)  
 0.19' E. OF PROP. LINE

RES. "C"  
 16.5' K&AE R/W ESM'T.  
 (MISC. BK. 559, PG. 278)  
 R/W MONUMENT (FOUND)  
 0.19' E. OF PROP. LINE

RES. "C"  
 16.5' K&AE R/W ESM'T.  
 (MISC. BK. 559, PG. 278)  
 R/W MONUMENT (FOUND)  
 0.19' E. OF PROP. LINE

RES. "C"  
 16.5' K&AE R/W ESM'T.  
 (MISC. BK. 559, PG. 278)  
 R/W MONUMENT (FOUND)  
 0.19' E. OF PROP. LINE

RES. "C"  
 16.5' K&AE R/W ESM'T.  
 (MISC. BK. 559, PG. 278)  
 R/W MONUMENT (FOUND)  
 0.19' E. OF PROP. LINE

RES. "C"  
 16.5' K&AE R/W ESM'T.  
 (MISC. BK. 559, PG. 278)  
 R/W MONUMENT (FOUND)  
 0.19' E. OF PROP. LINE

RES. "C"  
 16.5' K&AE R/W ESM'T.  
 (MISC. BK. 559, PG. 278)  
 R/W MONUMENT (FOUND)  
 0.19' E. OF PROP. LINE

RES. "C"  
 16.5' K&AE R/W ESM'T.  
 (MISC. BK. 559, PG. 278)  
 R/W MONUMENT (FOUND)  
 0.19' E. OF PROP. LINE

- = #4 REBAR W/ "BAUGHMAN" CAP (SET)
- = #5 REBAR (FOUND)
- = 100# SPIKE (FOUND)
- = #4 REBAR W/ "SAVIT" CAP (FOUND)
- = CONC. FLOOD CONTROL R/W MONUMENT (FOUND)
- ⊗ = 1" IRON (FOUND)
- △ = 1/2" IRON W/ DISK (FOUND)
- ▽ = 1" NOTCH (SET)
- ▽ = 1/2" IRON (FOUND)
- = 1" IRON W/ DISK (FOUND)
- ⊗ = STONE (FOUND)

- (M) = MEASURED
- (P) = PLATTED
- (D) = DESCRIBED
- (C) = CALCULATED
- (C-D) = CALCULATED PER DESCRIBED INFO
- (C-P) = CALCULATED PER PLATTED INFO
- (U) = DESCRIBED CHORD DISTANCE BETWEEN R/W MONUMENTS
- (M) = MEASURED CHORD DISTANCE BETWEEN R/W MONUMENTS

**BENCHMARK:**  
 Hoover and MacArthur ( 39th St. South )  
 C&M Bench Mark NE corner of intersection  
 41.60' N. of center line  
 63.00' E. of center line  
 20.00' E. of guy pole  
 73.80' N. of station corner iron  
 City 121.22' ft  
 MSL 1308.62' ft

**Big Ditch and MacArthur**  
 C&M Bench Mark West bound line  
 east end of bridge  
 East of Hoover  
 City 116.52' ft  
 MSL 1303.92' ft

LOT	BLOCK	ELEVATION CITY DATUM
2-53	D	96.5
55-80	D	96.5
88-28	D	96.5

**NOTE:**  
 A master grading plan for drainage has been developed for this subdivision and is on file with the City of Wichita, Kansas. All drainage easements, right-of-ways or reserves shall remain as established grades or as modified with the approval of the City Engineer of the City of Wichita, Kansas. No obstructions which impede the flow of this drainage system be allowed.



Sedgwick County  
 Registrar of Deeds - 8th Floor  
 DOC #/FLM-PG: 20611551  
 Parcel #: 1501424  
 Page Recorded: 1  
 Recording Fee: \$60.00  
 Clasher: Dillards, UT  
 Authorized Sign: \_\_\_\_\_

Date Recorded: 9/28/2004 3:50:56 PM