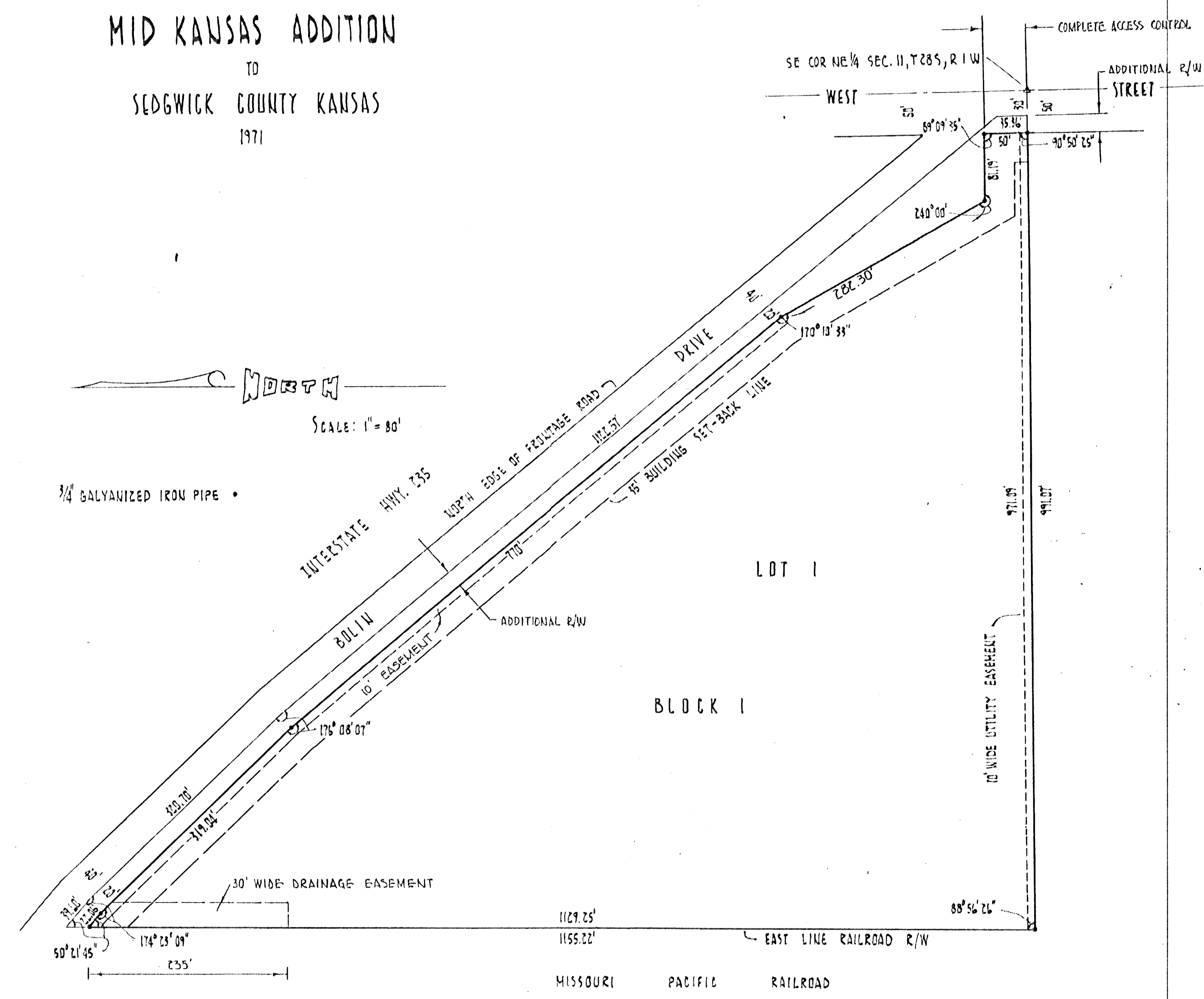


61-9 1-5

PLAT OF  
MID KANSAS ADDITION  
TO  
SEDGWICK COUNTY KANSAS  
1971



STATE OF KANSAS } ss.  
COUNTY OF SEDGWICK }

I, Charles M. Goodness, being a duly licensed professional engineer in said county and state, do hereby certify that I have surveyed and platted MID-KANSAS ADDITION to Sedgwick County, Kansas, described as follows: Commencing at the southeast corner of the NE 1/4, Section 11, T 28 S, R 1 W of the 6th P.M., Sedgwick County, Kansas; thence west 30 feet along the one-half section line to the point of beginning; thence west along the one-half section line 991.07 feet to the east line of the Missouri Pacific Railroad right of way; thence north along said right of way line 1,155.22 feet; thence southeasterly 39.60 feet at a deflection angle to the right of 129°30'15"; thence southeasterly 220.70 feet at a deflection angle to the right of 52°36'51"; thence southeasterly 1,122.57 feet at a deflection angle to the right of 195°1'53" to the west line of West Street; thence south 35.36 feet along the west line of West Street to the point of beginning, containing 13.92 acres, more or less.

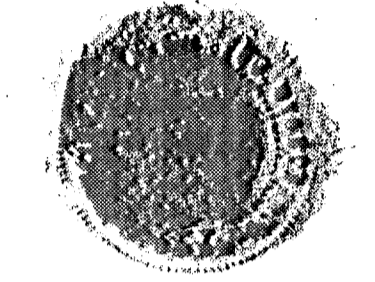
*Charles M. Goodness*  
Charles M. Goodness  
Licensed Professional Engineer  
(SEAL)



KNOW ALL MEN BY THESE PRESENTS:

That we, Mid-Kansas Construction Company, Inc., a corporation, by its Vice-President George H. Tomlin and Asst Secretary, Lawrence C. Martin have caused the land described in the engineer's certificate to be platted into a block, a lot and streets. Easements are hereby granted as indicated for utility and drainage construction and maintenance. Streets are hereby dedicated to and for the use of the public. All abutters rights of access to or from WEST STREET over and across the WEST line of WEST STREET are hereby granted to the appropriate Governing Body.

MID-KANSAS CONSTRUCTION COMPANY, INC.  
*George H. Tomlin*  
George H. Tomlin Vice-President  
*Lawrence C. Martin*  
Lawrence C. Martin Asst. Secretary  
(SEAL)



STATE OF KANSAS } ss.  
COUNTY OF SEDGWICK }

Be it remembered that on this 5th day of April, 1971, before me, a notary public in and for said county and state, case Mid-Kansas Construction Company, Inc., a corporation, by its Vice-President George H. Tomlin and Asst Secretary, Lawrence C. Martin to me known to be the same persons who executed the foregoing instrument of writing and duly acknowledged the same as their voluntary act and deed and as the act and deed of said corporation. In testimony whereof I have hereunto set my hand and affixed my notarial seal the day and year above written.

*Robert H. McCann*  
Robert H. McCann  
Notary Public  
(SEAL)



My Commission expires May 15, 1974.

This plat of Mid-Kansas Addition to Sedgwick County, Kansas has been submitted to and approved by the Wichita-Sedgwick County Metropolitan Area Planning Commission, Wichita, Kansas.

Dated this 13th day of May, 1971.

WICHITA-SEDGWICK COUNTY METROPOLITAN  
AREA PLANNING COMMISSION  
*Floyd Souder*  
FLOYD SOUDERS Chairman  
*Robert A. Lakin*  
Robert A. Lakin Secretary  
(SEAL)



THIS PLAT APPROVED AND ALL DEDICATIONS SHOWN HEREON ACCEPTED BY THE CITY COMMISSIONERS OF THE CITY OF WICHITA, KANSAS THIS 29th DAY OF June, 1971.

*Jack H. Green*  
Jack H. Green Mayor  
*Alphe Berly*  
Alphe Berly City Clerk  
(SEAL)



THIS PLAT APPROVED AND ALL DEDICATIONS SHOWN HEREON ACCEPTED BY THE BOARD OF COUNTY COMMISSIONERS OF SEDGWICK COUNTY, KANSAS THIS 14th DAY OF October, 1971.

*Elmer S. Peltz*  
Elmer S. Peltz Chairman  
*Carl E. Rush*  
Carl E. Rush Commissioner  
(SEAL)



Entered on Transfer Record this 14 day of Oct, 1971.

*Marie Warden*  
Marie Warden County Clerk  
(SEAL)

STATE OF KANSAS } ss.  
COUNTY OF SEDGWICK }

This is to certify that this instrument was filed for record in the Register of Deeds Office at 10:06 A.M. on the 14th day of October, 1971.

*John Hale*  
John Hale Register of Deeds  
*Pearl B. Gilbert*  
Pearl B. Gilbert Deputy  
PEARL B. GILBERT

# 21905