

Street Paving and Incidental Storm Water Sewer For Upland Hills to serve **TURKEY CREEK 2ND ADDITION - PHASE II**

Jewell, from the west line of Lot 8, Block B, west to the west line of Upland Hills
Upland Hills, from the north line of Jewell, south to the south line of Lot 11, Block D
Grant, from the east line of Upland Hills, east to the west line of Lot 1, Block D
Jewell Ct., from the south line of Jewell, south to and including the cul-de-sac
Upland Hills Ct., from the westerly line of Upland Hills, north to and including the cul-de-sac.

CITY OF WICHITA, KANSAS

James L. Armour, P.E. City Engineer

Project Number

472-84029

O.C.A. Number

765983

Scale: 1" = 150'

Benchmarks

BM #1: City of Wichita Benchmark Disc. 119th St. West & 0.5 miles S of Kellogg. 42.2' E of centerline & 6.4' S of Power Pole. Elev. = 144.69 (City Datum)

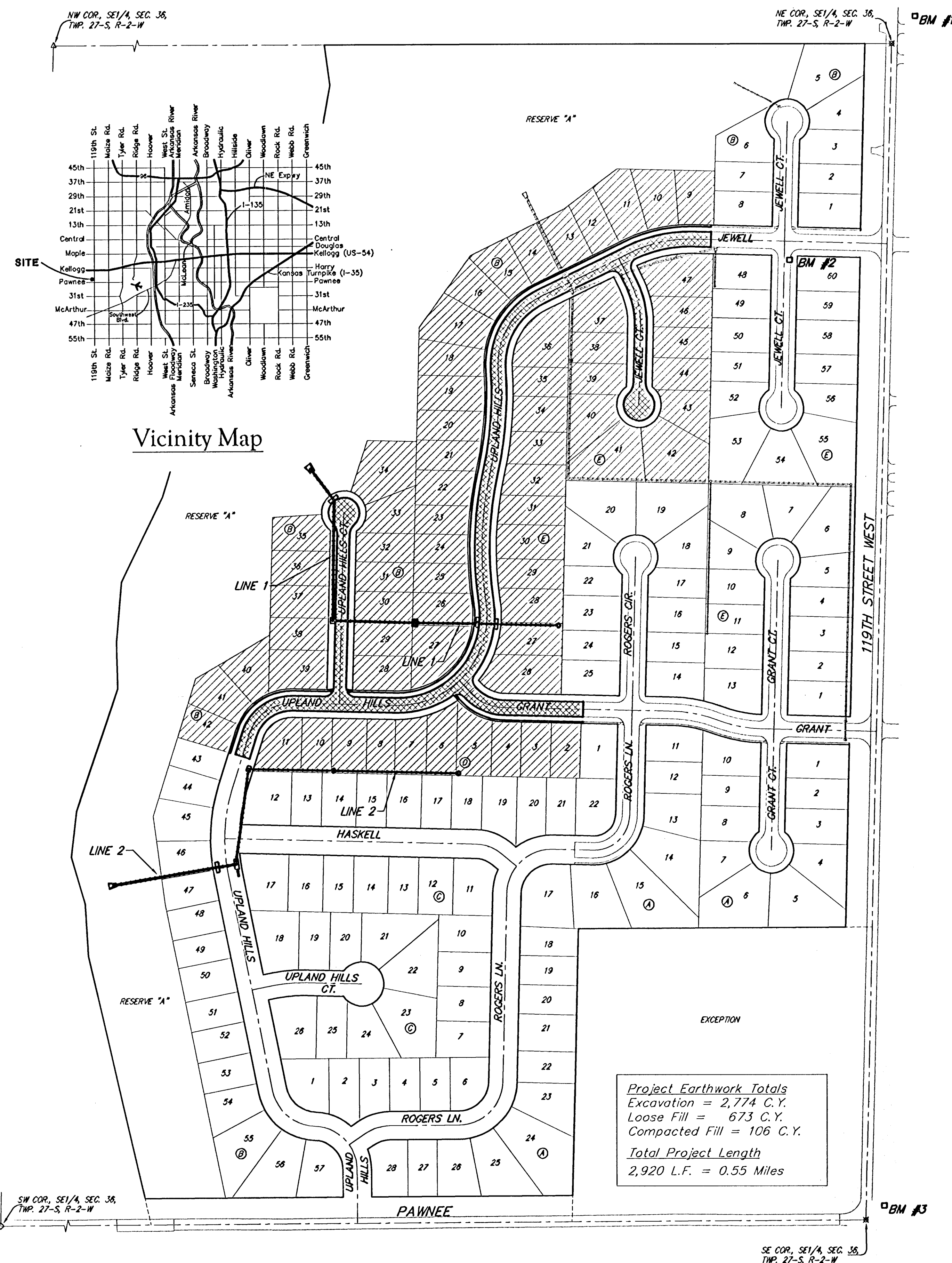
BM #2: Benchmark Disc. adjacent to fire hydrant at S end of E curb return of Jewell & Jewell Ct. Elev. = 146.84 (City Datum)

BM #3: 119th St. W. & Pawnee. City of Wichita Benchmark Disc. NE corner of intersection. 40' E and 30' N of centerline. 59.5' N of power pole @ SE corner of intersection. 156.8' NNE of centerline of E concrete headwall on culvert under 119th St. W. Elev. = 148.68 (City Datum)

Sheet Index

Title Sheet	1
35' Pavement Detail	2
29' Pavement Detail	3
Sign Detail	4
Miscellaneous Details	5
Upland Hills	6-9
Jewell	10
Upland Hills Ct (Lots 28-39, Block B)	11
Grant	12
Jewell Ct (Lots 37-47, Block E)	12-13
SWS Line 1	14-16
SWS Line 2	17-18
Coordinate Sheet	19
Erosion Control Plan	20-21
Soil Erosion BMP Details	22-25
Headwall Details	26
Std. Drop Inlet Detail	27
Special Yard Inlet Detail	28
Std. Type 1A Single Inlet Detail	29
Std. Type 1A Double Inlet Detail	30
Ring & Cover Detail	31
Earthwork Cross Sections	32-40
Copy of Plat	41

Project Earthwork Totals
Excavation = 2,774 C.Y.
Loose Fill = 673 C.Y.
Compacted Fill = 106 C.Y.
Total Project Length
2,920 L.F. = 0.55 Miles



GENERAL NOTES:

- Contractor will be required to provide notice to utility companies a minimum of forty-eight (48) hours prior to any excavation, as follows:
Kansas One-Call 687-2470
The Contractor must notify the following in case of an emergency:
Cox Communications 262-4270
Kansas Gas Service 1-888-482-4950
Westar Energy 383-2650
Aquila Energy 1-800-303-0357
SBC 268-2245
City of Wichita Water Dept. 268-4563
City of Wichita Sewer Maint. 268-4024
City of Wichita Storm Sewer Maint. 268-4090
City of Wichita Traffic Maint. 268-4034
Conoco Pipeline Co. 1-800-231-2551
Southern Star Pipeline Co. 529-6600
Phillips Pipeline Co. 1-800-766-8230
Jayhawk Pipeline Co. 1-888-542-9575
- Utility service lines, poles, valve boxes, meters, and etcetera are to be adjusted as necessary by others prior to construction unless the plans specifically call for their adjustment by the Contractor or unless the plans specifically identify a utility to be adjusted by its owner during construction. Existing utilities and their location, as shown on the plans, represent the best information obtainable for design. The contractor will be required to work around existing utilities within the right-of-way which do not conflict with proposed construction.
- Trees and shrubs in public right-of-way which are in direct conflict with proposed new construction shall be removed by the Contractor with the Engineer's approval. Trees and shrubs which are not in direct conflict with proposed new construction shall be saved and protected from damage.
- All areas disturbed during construction shall be seeded at 300 lbs./acre with Rye Grass immediately following construction in that area. Contractor shall prepare ground per City Specifications.
- Rubble from the removal of miscellaneous structures shall be disposed of on sites to be provided by the Contractor. These sites shall be approved by the Engineer as to suitability, appearance and site location. Locations that, in the opinion of the Engineer, will leave an unsightly appearance will not be approved. All disposal sites must be approved by the Kansas Department of Health and Environment. Material either stockpiled or disposed of in a flood plain would require a Kansas State Board of Agriculture permit. Any material dumped in waters of the United States or wetlands is subject to U.S. Corps. of Engineers permitting regulations. Any material buried or stockpiled beyond approved construction limits would require additional archaeological investigations unless buried in a previously approved borrow location.
- The Contractor shall be responsible for preserving property irons. The Contractor will be required to re-establish any property irons which are damaged or destroyed by his construction operations. Such irons shall be re-established by a licensed land surveyor in accordance with state law.
- A saw cut of at least one-half the depth of existing surface courses of one-fourth the depth of the existing total pavement thickness shall be provided at locations where proposed construction abuts as existing surface course or pavement for which partial removal of that surface or pavement is required. Sawed joint to facilitate removal within three (3) feet of existing joints will not be permitted and for such instances the limits of removal shall extend to the existing joint. Such saw cuts will not be paid for directly and this cost shall be considered as subsidiary to the removal of the surface or pavement.
- All existing and proposed erosion control measures including silt fencing, erosion control mat, straw bales, inlet barriers, and const. entrance shall be maintained throughout construction by the contractor and until project is accepted by the City of Wichita. The on-site engineer shall complete weekly reports on the status of erosion control measures. The contractor shall be required to comply with maintenance and/or replacement of erosion control measures as determined by the on-site engineer until project is accepted by City of Wichita. Maintenance and/or replacement of erosion control measures to be paid by L.S. bid item "Site Clearing & Restoration."
- The Contractor shall give all property owners and/or tenants of developed property abutting the construction of this project a minimum of ten (10) days advance notice prior to start of construction.
- All excess excavation shall remain on site and be spread evenly on lots out of right-of-ways and easements.
- The developer of this project is Paul E. Kelsey, and may be reached at (316) 722-1077



Proposed Streets: [hatched box] Benefit District [diagonal lines box]



Baughman Company, P.A. 315 Ellis St. Wichita, KS 67211 P 316-262-7271 F 316-262-0149
ENGINEERING | SURVEYING | PLANNING | LANDSCAPE ARCHITECTURE