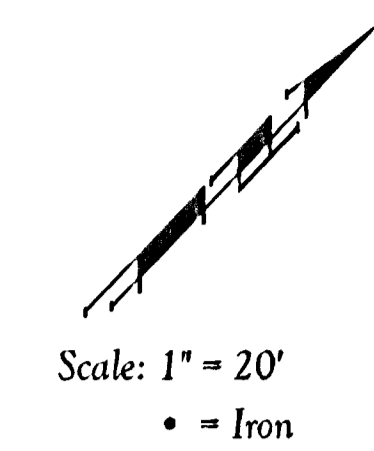


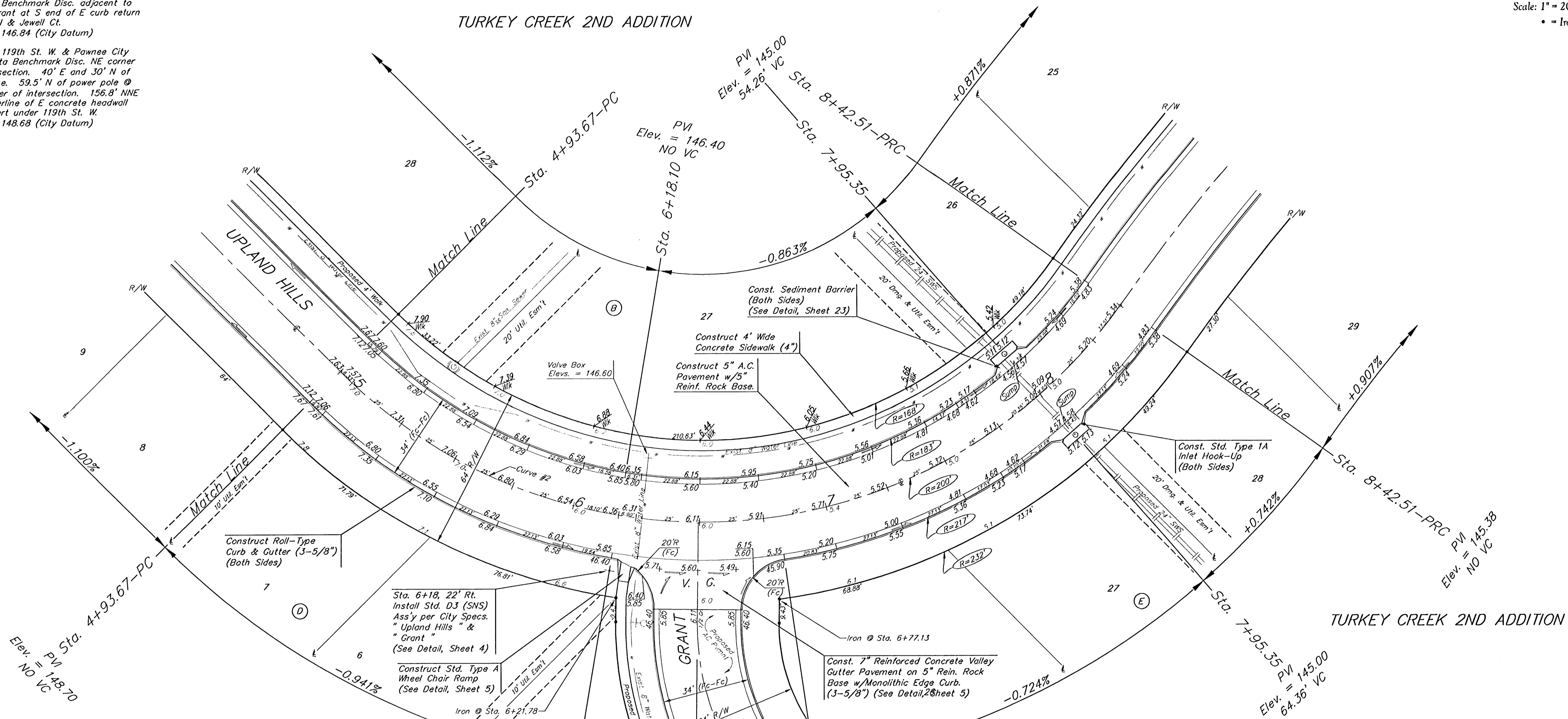
Benchmarks:
 BM #1: City of Wichita Benchmark Disc. 119th St. West & 0.5 miles S of Kellogg. 42.2' E of centerline & 6.4' S of Power Pole.
 Elev. = 144.69 (City Datum)

BM #2: Benchmark Disc. adjacent to fire hydrant at S end of E curb return of Jewell & Jewell Ct.
 Elev. = 146.84 (City Datum)

BM #3: 119th St. W. & Pawnee City of Wichita Benchmark Disc. NE corner of intersection. 40' E and 30' N of centerline. 59.5' N of power pole @ SE corner of intersection. 156.8' NNE of centerline of E concrete headwall on culvert under 119th St. W.
 Elev. = 148.68 (City Datum)



TURKEY CREEK 2ND ADDITION



Curve #2
 Curve Data Based on Centerline
 Rad. = 200' Delta = 99° 56' 11" Tangent = 238.08'
 Arc = 348.84' L.C. = 306.27' Del/Ft. = 8.59446 Min.

Station	Arc	FACE CHORD LENGTHS			T. Del.
		8' Lt.	8' Rt.	Del.	
4+93.67				0'00'00"	0'00'00"
5+00.00	6.33'	5.54'	7.12'	0'54'24"	0'54'24"
5+25.00	25.00'	21.86'	28.11'	3'34'52"	4'29'16"
5+50.00	25.00'	21.86'	28.11'	3'34'52"	8'04'08"
5+75.00	25.00'	21.86'	28.11'	3'34'51"	11'38'59"
6+00.00	25.00'	21.86'	28.11'	3'34'52"	15'13'51"
6+18.10	18.10'	15.83'	20.36'	2'35'34"	17'49'25"
6+25.00	6.90'	6.04'	7.76'	0'59'18"	18'48'43"
6+50.00	25.00'	21.86'	28.11'	3'34'51"	22'23'34"
6+75.00	25.00'	21.86'	28.11'	3'34'52"	25'58'26"
6+80.80	5.80'	5.07'	6.52'	0'49'51"	26'48'17"
7+00.00	19.20'	16.79'	21.59'	2'45'01"	29'33'18"
7+25.00	25.00'	21.86'	28.11'	3'34'51"	33'08'09"
7+50.00	25.00'	21.86'	28.11'	3'34'52"	36'43'01"
7+75.00	25.00'	21.86'	28.11'	3'34'52"	40'17'53"
8+00.00	25.00'	21.86'	28.11'	3'34'51"	43'52'44"
8+25.00	25.00'	21.86'	28.11'	3'34'52"	47'27'36"
8+42.51	17.51'	15.32'	19.69'	2'30'30"	49'58'06"

Roll type curb & gutter to be constructed on the pavement on this sheet.
 Top of curb elevation are given for full height curb.

Baughman
 Turkey Creek 2nd Addition - Phase II
UPLAND HILLS
 STA. 4+93.67 STA. 8+42.51

PROJECT NUMBER: 472-84029
 DESIGN: MWS/JAK
 DRAWN: JAK
 APPROVED: [Signature]
 DATE: 4/12/06

REVISIONS:
 SCALE: Noted
 SHEET: 7 OF 41

E:\Eng\Turkey Creek 2nd\Phase 2\Str2 06-01E482