

Benchmarks:
 BM #1: City of Wichita Benchmark Disc. 119th St. West & 0.5 miles S of Kellogg. 42.2' E of centerline & 6.4' S of Power Pole.
 Elev. = 144.69 (City Datum)

BM #2: Benchmark Disc. adjacent to fire hydrant at S end of E curb return of Jewell & Jewell Ct.
 Elev. = 146.84 (City Datum)

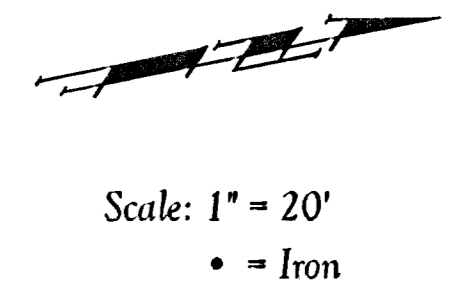
BM #3: 119th St. W. & Pawnee City of Wichita Benchmark Disc. NE corner of intersection. 40' E and 30' N of centerline. 59.5' N of power pole @ SE corner of intersection. 156.8' NNE of centerline of E concrete headwall on culvert under 119th St. W.
 Elev. = 148.68 (City Datum)

Curve #4
 Curve Data Based on Centerline
 Rad. = 800' Delta = 16° 13' 35" Tangent = 114.04'
 Arc = 226.56' L.C. = 225.81' Def/Ft. = 2.14862 Min.

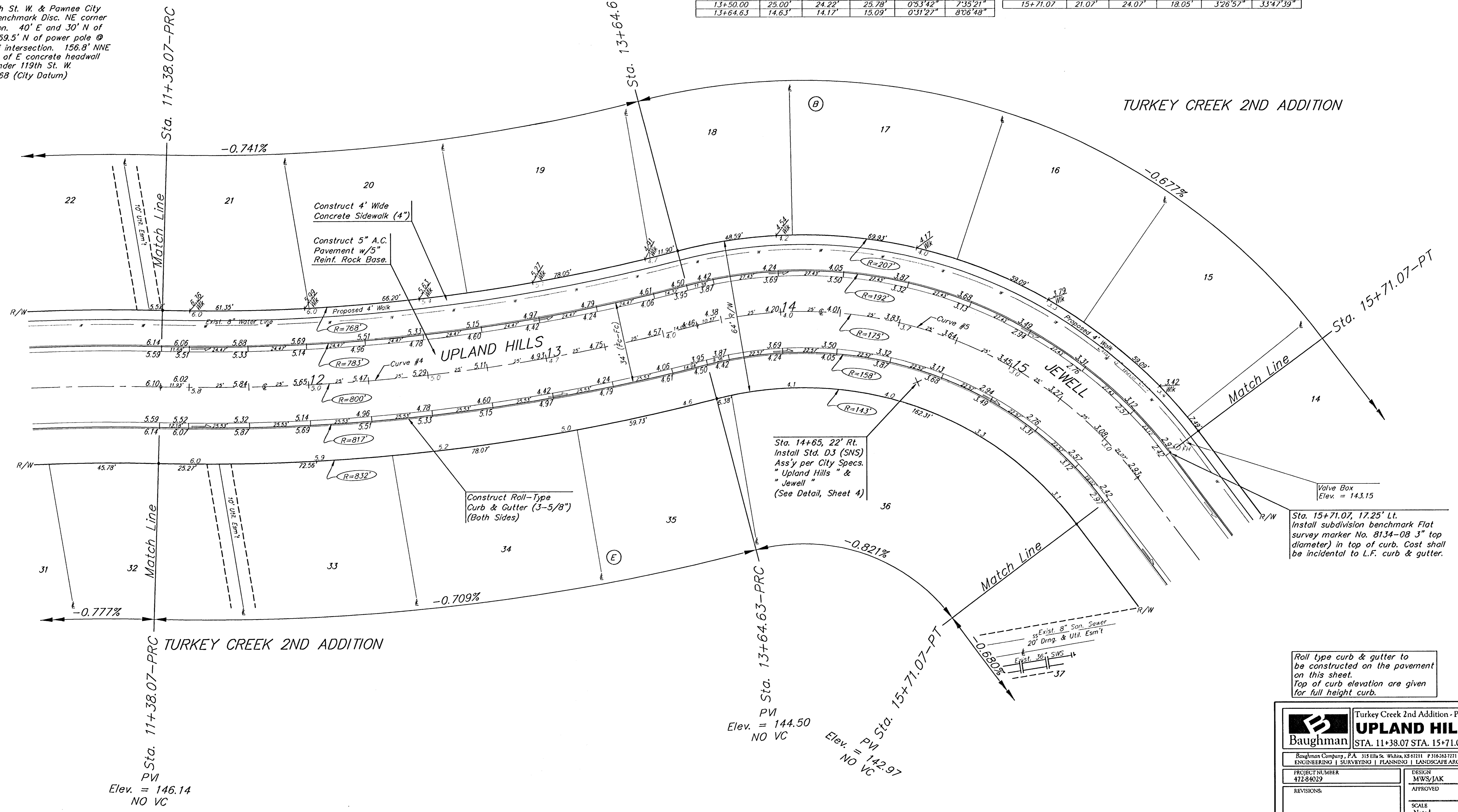
| Station | Arc | FACE CHORD LENGTHS | | Defl. | T. Defl. |
|----------|--------|--------------------|--------|----------|----------|
| | | 8' Lt. | 8' Rt. | | |
| 11+38.07 | 0 | 0 | 0 | 0°00'00" | 0°00'00" |
| 11+50.00 | 11.93' | 11.56" | 12.30" | 0°25'38" | 0°25'38" |
| 11+75.00 | 25.00' | 24.22" | 25.78" | 0°53'43" | 1°19'21" |
| 12+00.00 | 25.00' | 24.22" | 25.78" | 0°53'43" | 2°13'04" |
| 12+25.00 | 25.00' | 24.22" | 25.78" | 0°53'43" | 3°06'47" |
| 12+50.00 | 25.00' | 24.22" | 25.78" | 0°53'43" | 4°00'30" |
| 12+75.00 | 25.00' | 24.22" | 25.78" | 0°53'43" | 4°54'13" |
| 13+00.00 | 25.00' | 24.22" | 25.78" | 0°53'43" | 5°47'56" |
| 13+25.00 | 25.00' | 24.22" | 25.78" | 0°53'43" | 6°41'39" |
| 13+50.00 | 25.00' | 24.22" | 25.78" | 0°53'42" | 7°35'21" |
| 13+64.63 | 14.63' | 14.17" | 15.09" | 0°31'27" | 8°06'48" |

Curve #5
 Curve Data Based on Centerline
 Rad. = 175' Delta = 67° 35' 18" Tangent = 117.13'
 Arc = 206.44' L.C. = 194.67' Def/Ft. = 9.82198 Min.

| Station | Arc | FACE CHORD LENGTHS | | Defl. | T. Defl. |
|----------|--------|--------------------|--------|----------|-----------|
| | | 8' Lt. | 8' Rt. | | |
| 13+64.63 | 0 | 0 | 0 | 0°00'00" | 0°00'00" |
| 13+75.00 | 10.37' | 11.85" | 8.89" | 1°41'51" | 1°41'51" |
| 14+00.00 | 25.00' | 28.55" | 21.41" | 4°05'33" | 5°47'24" |
| 14+25.00 | 25.00' | 28.55" | 21.41" | 4°05'33" | 9°52'57" |
| 14+50.00 | 25.00' | 28.55" | 21.41" | 4°05'33" | 13°58'30" |
| 14+75.00 | 25.00' | 28.55" | 21.41" | 4°05'33" | 18°04'03" |
| 15+00.00 | 25.00' | 28.55" | 21.41" | 4°05'33" | 22°09'36" |
| 15+25.00 | 25.00' | 28.55" | 21.41" | 4°05'33" | 26°15'09" |
| 15+50.00 | 25.00' | 28.55" | 21.41" | 4°05'33" | 30°20'42" |
| 15+71.07 | 21.07' | 24.07" | 18.05" | 3°26'52" | 33°47'39" |



Scale: 1" = 20'
 • = Iron



Roll type curb & gutter to be constructed on the pavement on this sheet.
 Top of curb elevation are given for full height curb.

Turkey Creek 2nd Addition - Phase II

UPLAND HILLS
 STA. 11+38.07 STA. 15+71.07

Baughman
 Baughman Company, P.A. 315 E. St. W. Wichita, KS 67202 P. 316-263-1211 F. 316-263-1419
 ENGINEERING | SURVEYING | PLANNING | LANDSCAPE ARCHITECTURE

| | | |
|-----------------------------|-------------------|-------------------------|
| PROJECT NUMBER 472-84022 | DESIGN MWS/JAK | DRAWN JAK |
| REVISIONS: | APPROVED | DATE 4/12/06 |
| SCALE Noted | | SHEET 9 OF 41 |

E.Eng/Turkey Creek 2nd Phase 2/Sheet 9
 0601-E482