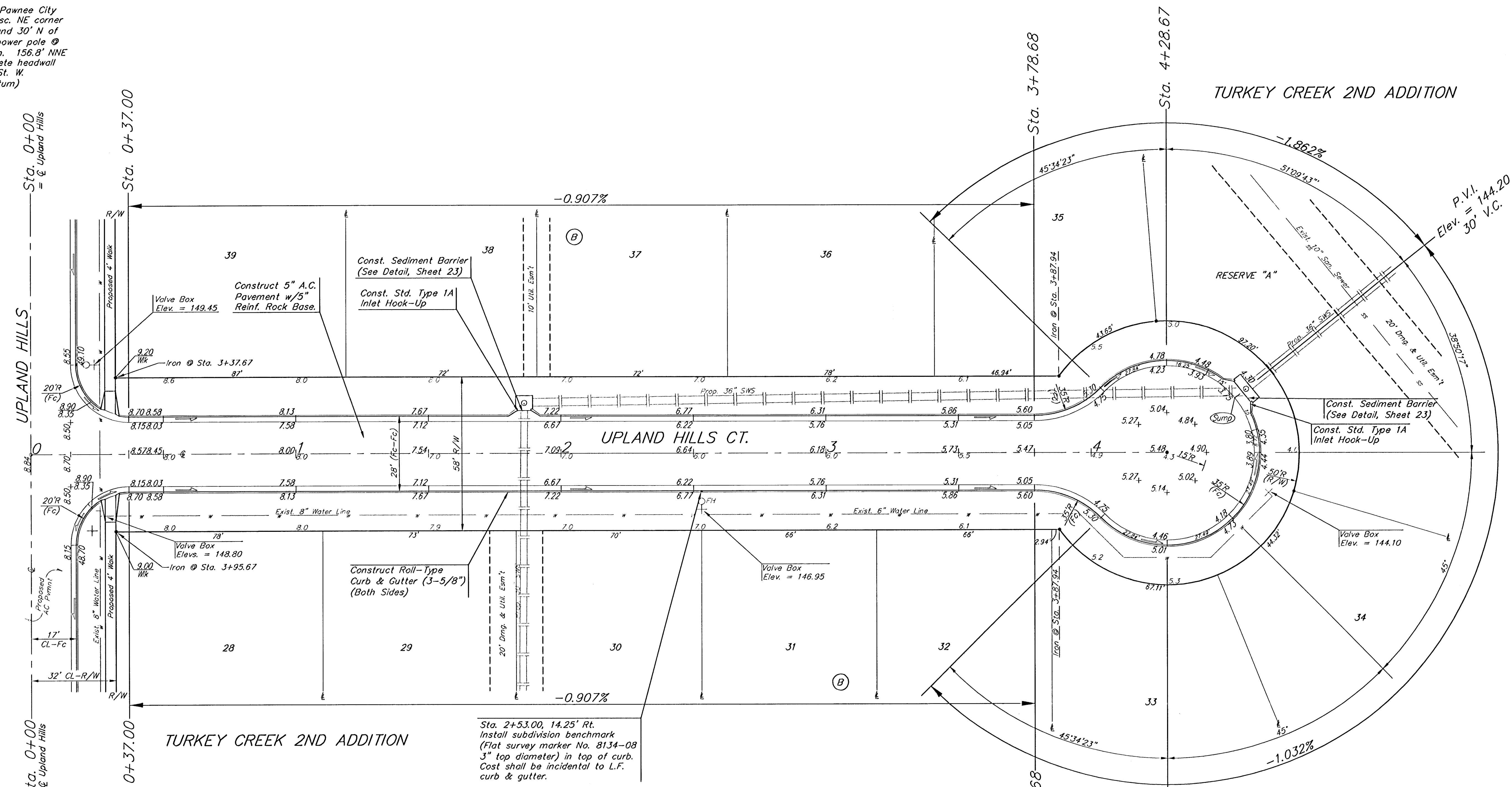
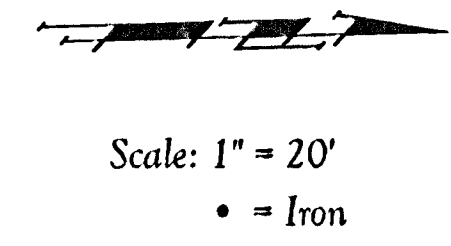


**Benchmarks:**  
 BM #1: City of Wichita Benchmark  
 Disc. 119th St. West & 0.5 miles S of  
 Kellogg. 42.2' E of centerline & 6.4' S  
 of Power Pole.  
 Elev. = 144.63 (City Datum)

BM #2: Benchmark Disc. adjacent to  
 fire hydrant at S end of E curb return  
 of Jewell & Jewell Ct.  
 Elev. = 146.84 (City Datum)

BM #3: 119th St. W. & Pawnee City  
 of Wichita Benchmark Disc. NE corner  
 of intersection. 40' E and 30' N of  
 centerline. 59.5' N of power pole @  
 SE corner of intersection. 156.8' NNE  
 of centerline of E concrete headwall  
 on culvert under 119th St. W.  
 Elev. = 148.68 (City Datum)



Sta. 2+53.00, 14.25' Rt.  
 Install subdivision benchmark  
 (Flat survey marker No. 8134-08  
 3" top diameter) in top of curb.  
 Cost shall be incidental to L.F.  
 curb & gutter.

Roll type curb & gutter to  
 be constructed on the pavement  
 on this sheet.  
 Top of curb elevation are given  
 for full height curb.

		Turkey Creek 2nd Addition - Phase II	
		<b>UPLAND HILLS CT</b>	
Baughman Company, P.A. 115 E 10th St. Wichita, KS 67202 ENGINEERING   SURVEYING   PLANNING   LANDSCAPE ARCHITECTURE		LOTS 28-39, BLOCK B	
PROJECT NUMBER 472-84029	DESIGN MWS/JAK	DRAWN JAK	APPROVED DATE 4/12/06
REVISIONS:	SCALE Noted SHEET		
			<b>11 OF 41</b>
E:\Eng\Turkey Creek 2nd\Phase 2\Set6		06-01-E482	