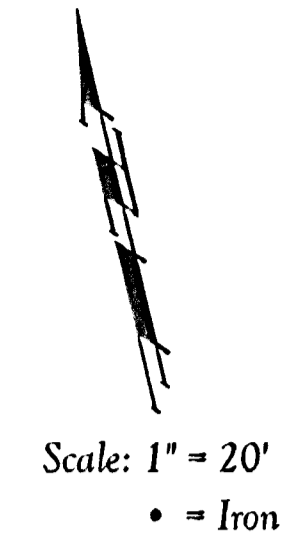


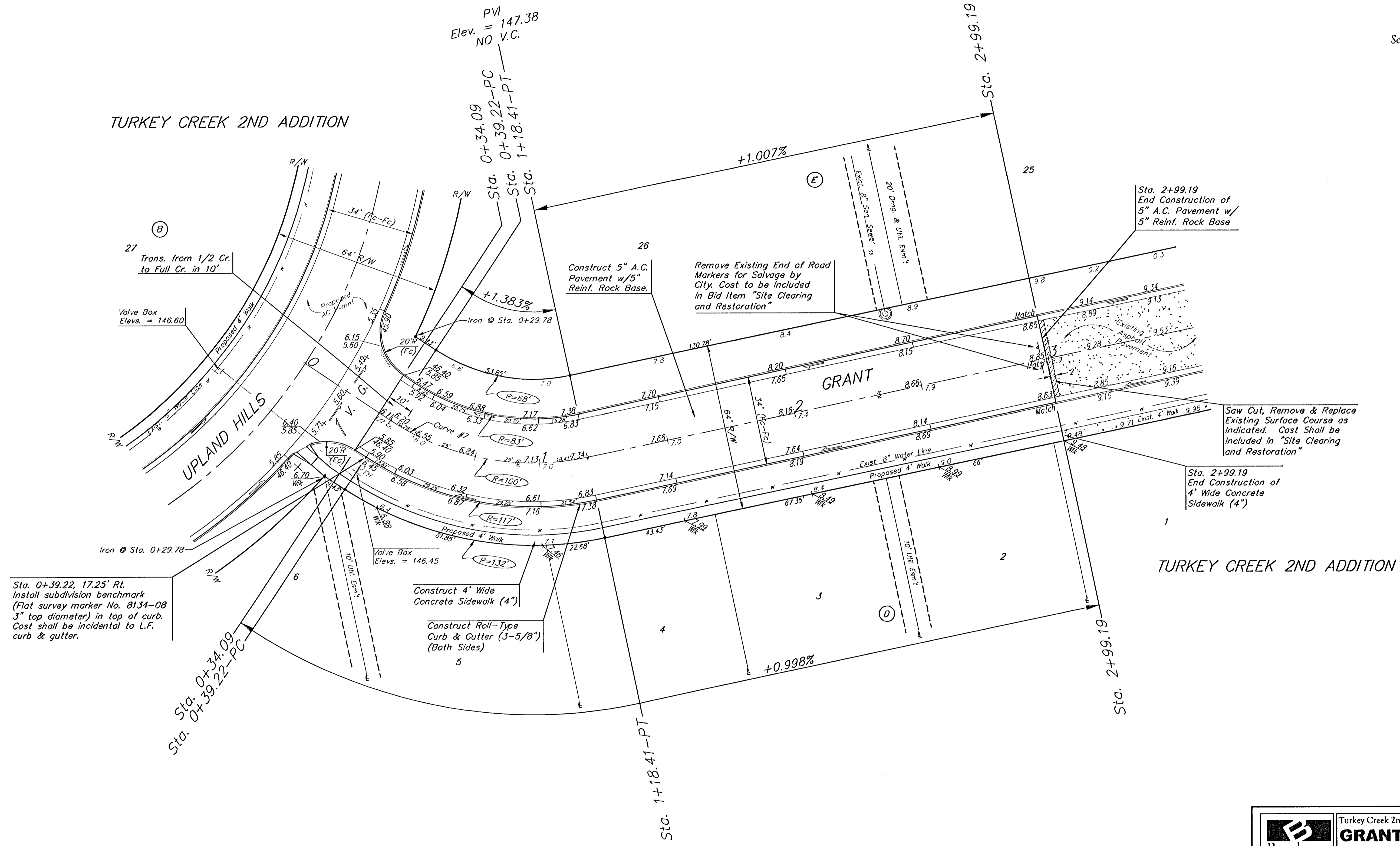
Benchmarks:
 BM #1: City of Wichita Benchmark
 Disc. 119th St. West & 0.5 miles S of Kellogg. 42.2' E of centerline & 6.4' S of Power Pole.
 Elev. = 144.69 (City Datum)

BM #2: Benchmark Disc. adjacent to fire hydrant at S end of E curb return of Jewell & Jewell Ct.
 Elev. = 146.84 (City Datum)

BM #3: 119th St. W. & Pawnee City of Wichita Benchmark Disc. NE corner of intersection. 40' E and 30' N of centerline. 59.5' N of power pole @ SE corner of intersection. 156.8' NNE of centerline of E concrete headwall on culvert under 119th St. W.
 Elev. = 148.68 (City Datum)



TURKEY CREEK 2ND ADDITION



Sta. 0+39.22, 17.25' Rt.
 Install subdivision benchmark
 (Flat survey marker No. 8134-08
 3" top diameter) in top of curb.
 Cost shall be incidental to L.F.
 curb & gutter.

Sta. 2+99.19
 End Construction of
 5" A.C. Pavement w/
 5" Reinf. Rock Base

Saw Cut, Remove & Replace
 Existing Surface Course as
 Indicated. Cost Shall be
 Included in "Site Clearing
 and Restoration"

Sta. 2+99.19
 End Construction of
 4' Wide Concrete
 Sidewalk (4")

Curve #7
 Curve Data Based on Centerline
 Rad. = 100' Delta = 45° 22' 22" Tangent = 41.80'
 Arc = 79.19' L.C. = 77.14' Del/Ft. = 17.18883 Min.

Station	Arc	FACE CHORD LENGTHS		Dell.	T. Dell.
		8' Lt.	8' Rt.		
0+39.22	-	-	-	0'00"00"	0'00"00"
0+50.00	10.78'	8.09'	13.47'	3'05"18"	3'05"18"
0+75.00	25.00'	18.70'	31.17'	7'09"43"	10'15"01"
1+00.00	25.00'	18.70'	31.17'	7'09"43"	17'24"44"
1+18.41	18.41'	13.79'	22.98'	5'16"27"	22'41"11"

Roll type curb & gutter to be constructed on the pavement on this sheet.
 Top of curb elevation are given for full height curb.

		Turkey Creek 2nd Addition - Phase II GRANT STA. 0+00 TO STA. 2+99.19	
Baughman Company, P.A. 315 Ellis St. Wichita, KS 67211 P 316-363-7271 F 316-363-6149 ENGINEERING SURVEYING PLANNING LANDSCAPE ARCHITECTURE			
PROJECT NUMBER 472-84029	DESIGN MWS/JAK	DRAWN JAK	DATE 4/12/06
REVISIONS:	SCALE Noted SHEET		
		12 OF 41	
E:Eng\Turke Creek 2nd\Phase 2\Set7		06-01-E482	