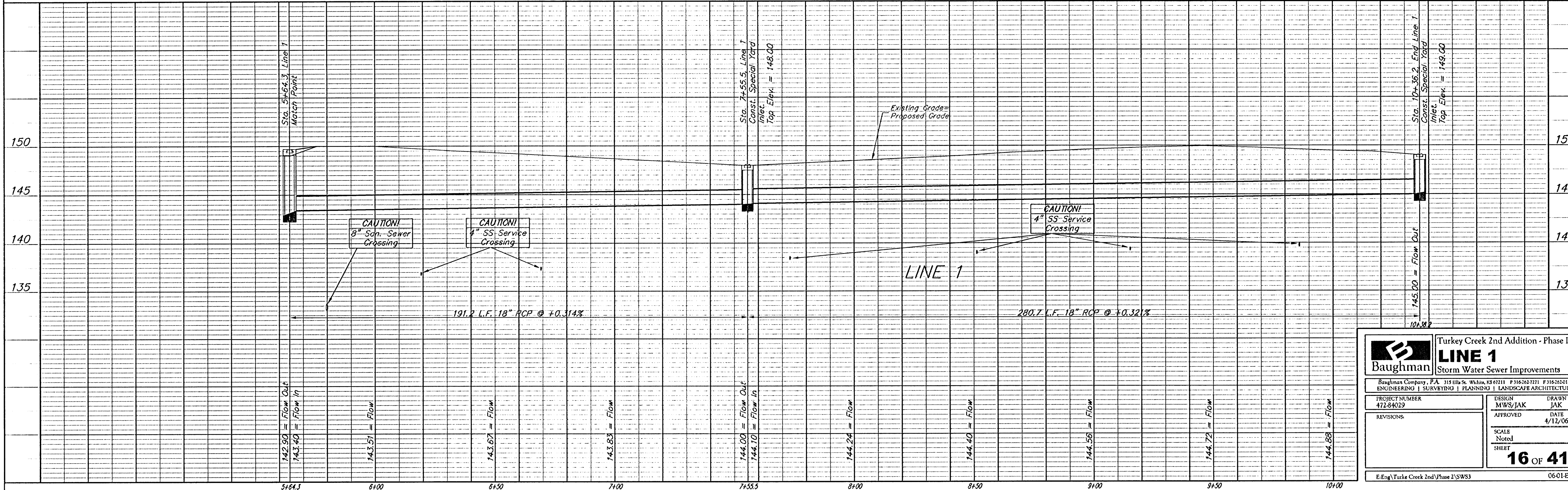
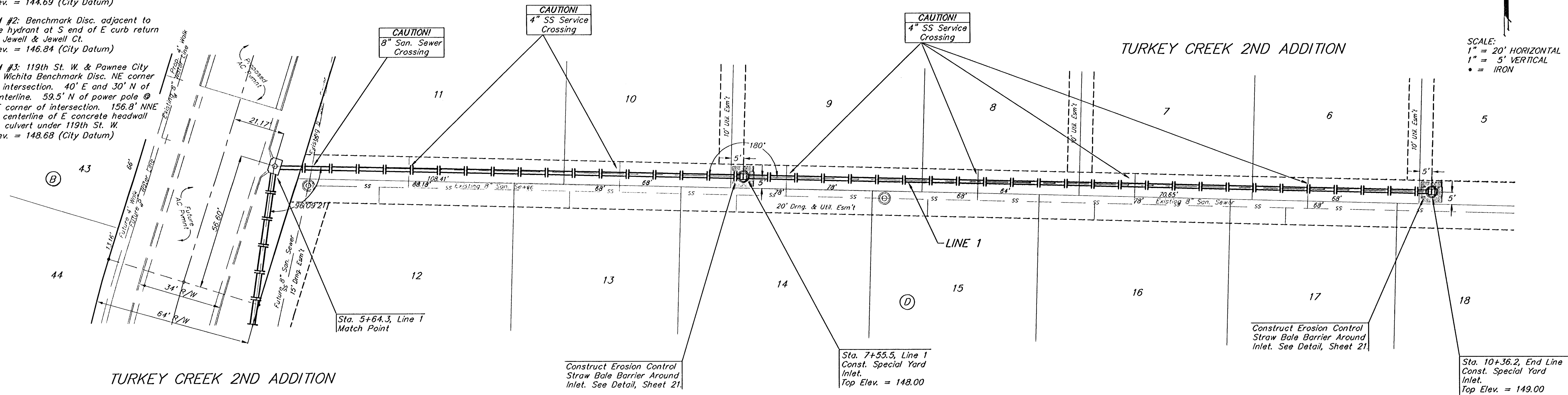


Benchmarks:
 BM #1: City of Wichita Benchmark
 Disc. 119th St. West & 0.5 miles S of
 Kellogg. 42.2' E of centerline & 6.4' S
 of Power Pole.
 Elev. = 144.69 (City Datum)

BM #2: Benchmark Disc. adjacent to
 fire hydrant at S end of E curb return
 of Jewell & Jewell Ct.
 Elev. = 146.84 (City Datum)

BM #3: 119th St. W. & Pawnee City
 of Wichita Benchmark Disc. NE corner
 of intersection. 40' E and 30' N of
 centerline. 59.5' N of power pole @
 SE corner of intersection. 156.8' NNE
 of centerline of E concrete headwall
 on culvert under 119th St. W.
 Elev. = 148.68 (City Datum)

SCALE:
 1" = 20' HORIZONTAL
 1" = 5' VERTICAL
 • = IRON



		Turkey Creek 2nd Addition - Phase II	
		LINE 1	
Storm Water Sewer Improvements		ENGINEERING SURVEYING PLANNING LANDSCAPE ARCHITECTURE	
PROJECT NUMBER 472-84029	DESIGN MWS/JAK	DRAWN JAK	DATE 4/12/06
REVISIONS:	SCALE Noted	SHEET	
		16 OF 41	
E:\Eng\Turkey Creek 2nd\Phase 2\SWS3		06-01-E482	