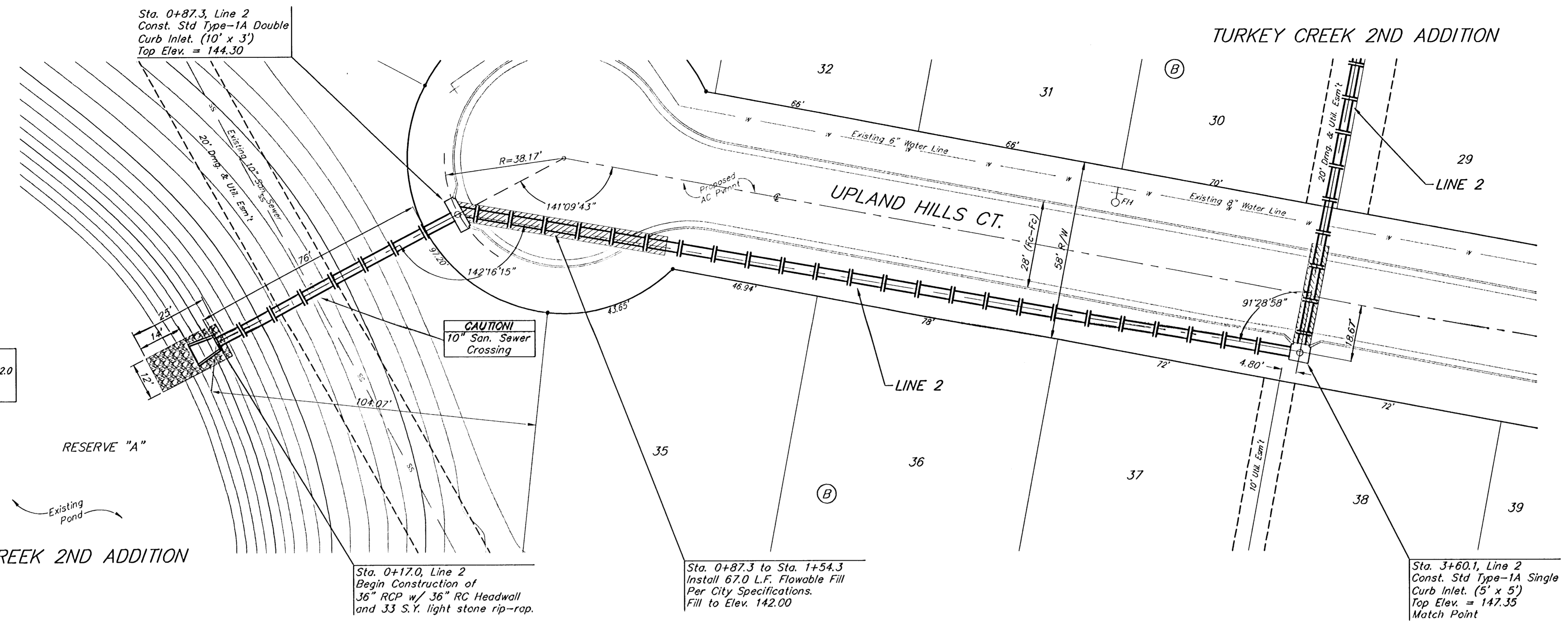


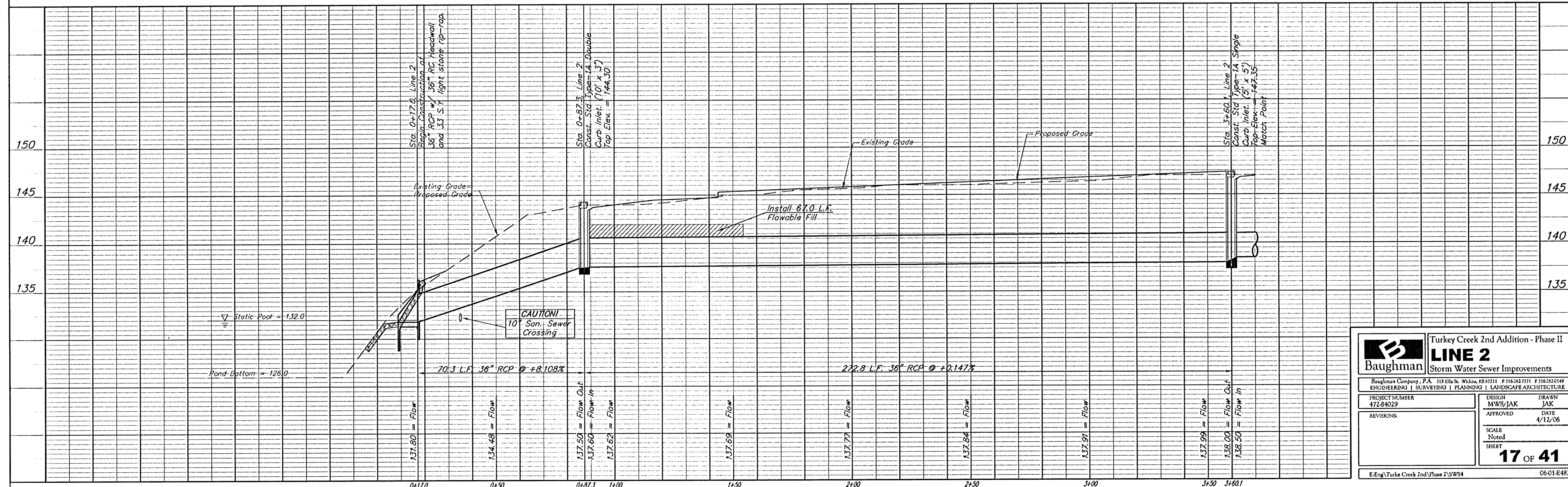
Benchmarks:
 BM #1: City of Wichita Benchmark Disc. 119th St. West & 0.5 miles S of Kellogg. 42.2' E of centerline & 6.4' S of Power Pole.
 Elev. = 144.69 (City Datum)
 BM #2: Benchmark Disc. adjacent to fire hydrant at S end of E curb return of Jewell & Jewell Ct.
 Elev. = 146.84 (City Datum)
 BM #3: 119th St. W. & Pawnee City of Wichita Benchmark Disc. NE corner of intersection. 40' E and 30' N of centerline. 59.5' N of power pole @ SE corner of intersection. 156.8' NNE of centerline of E concrete headwall on culvert under 119th St. W.
 Elev. = 148.68 (City Datum)

Pond data:
 Static ws elev. = 132.0
 100-yr ws elev. is
 Variable along reach

TURKEY CREEK 2ND ADDITION



SCALE:
 1" = 20' HORIZONTAL
 1" = 5' VERTICAL
 • = IRON



Baughman Turkey Creek 2nd Addition - Phase II
LINE 2
 Storm Water Sewer Improvements

ENGINEERING | SURVEYING | PLANNING | LANDSCAPE ARCHITECTURE

PROJECT NUMBER: 472-84029
 DESIGN: MWS/JAK
 DRAWN: JAK
 APPROVED: DATE 4/12/06

REVISIONS:

SCALE: Noted
 SHEET: 17 OF 41

E:\Eng\Turkey Creek 2nd\Phase 2\SWS4 06-01-E482