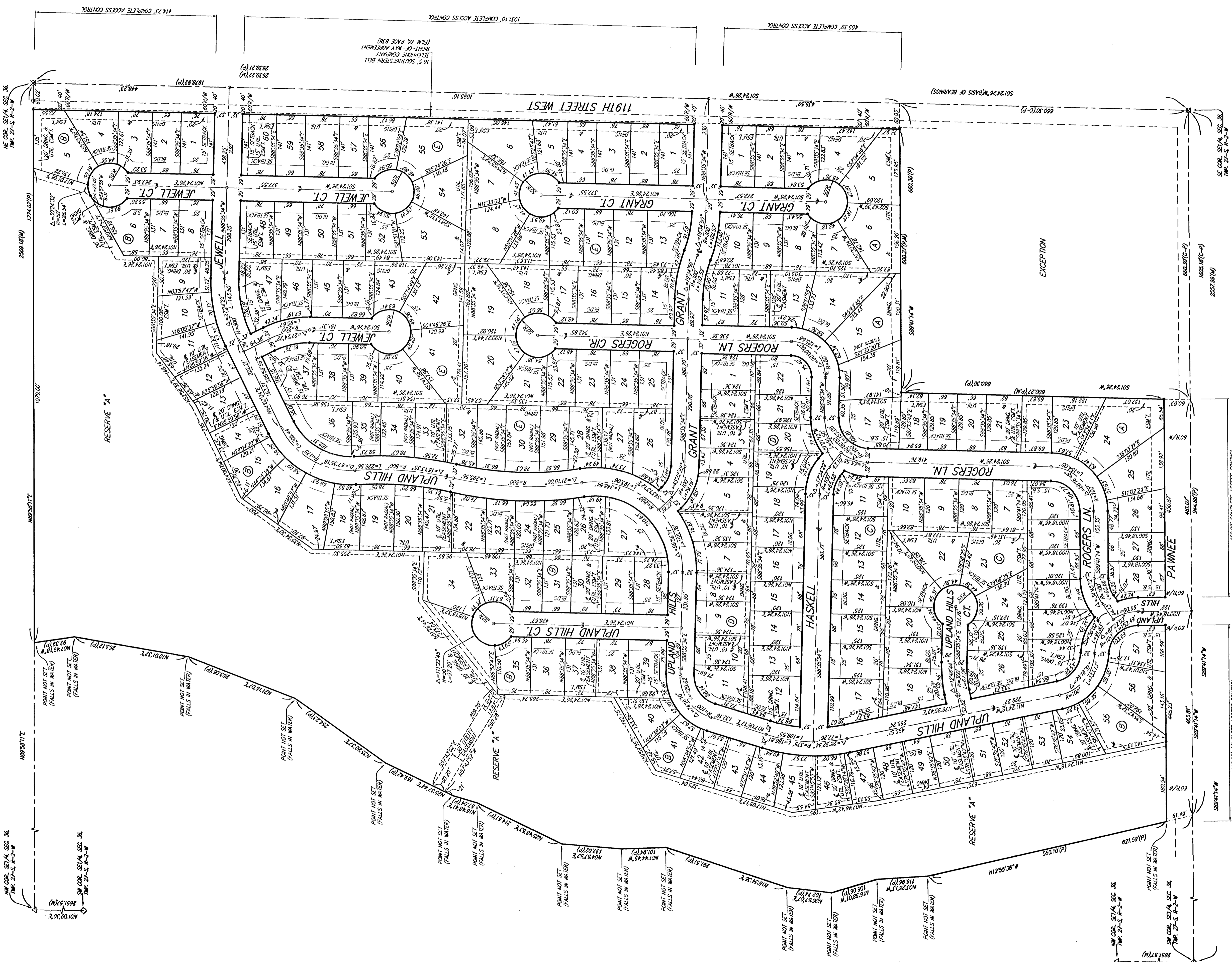


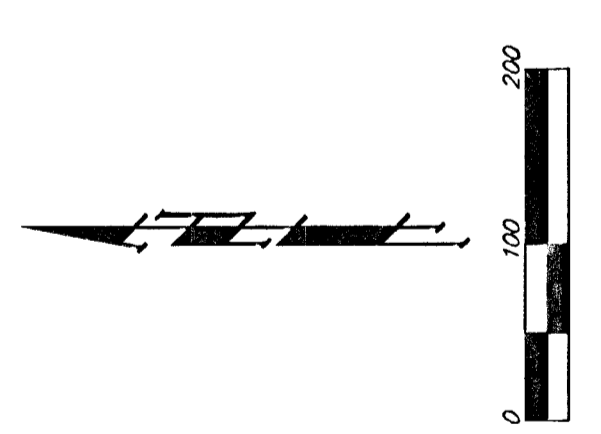
TURKEY CREEK 2ND ADDITION WICHITA, SEDGWICK COUNTY, KANSAS



NOTES:
 A master grading plan for drainage has been developed for this subdivision and is on file with the City of Wichita, Kansas. All drainage easements, easements, and easements shall be shown on the City Engineer's Plat, Kansas. No obstructions which impede the flow of this drainage system are allowed.

BENCHMARK & POINT
 CITY OF WICHITA BENCHMARK DISC
 NE CORNER OF INTERSECTION
 55.50' N. OF P.P. AT SE COR
 OF INTERSECTION
 158.88' W. OF UPLAND HILLS
 UNDER 19TH ST. W.
 ELEV. = (PER CITY RECORD)

LOT	BLOCK	ELEVATION AUGUST 09
5-12	B	1228.1
12-19	B	1228.5
20-21, 34	B	1228.4
35	B	1228.4
36	B	1228.9
37	B	1228.4
38	B	1228.9
39-41	B	1227.4
42-44	B	1227.6
45-47	B	1227.1
48-50	B	1227.6
51-53	B	1227.6
54-57	B	1227.9



- = M. RESUM. W/ "BAUGHMAN" CAP (SET)
 - = 1" IRON W/ "BAUGHMAN" CAP (FOUND)
 - = 1" IRON W/ "HASKELL" CAP (FOUND)
 - = 1" IRON OVER STONE (FOUND)
- (M) = MEASURED
 (P) = PLATTED
 (C-P) = CALCULATED PER PLATTED INFO.

Baughman Company, P.A.
 315 Elm St., Wichita, KS 67211 P. 316.262.7271 F. 316.262.4149
 Baughman ENGINEERING PLANNING LANDSCAPE ARCHITECTURE
 P:\PLAT\TURKEYCREEK2NDADD\TOWO\TURKEYCREEK2NDADD\DWG\MCC