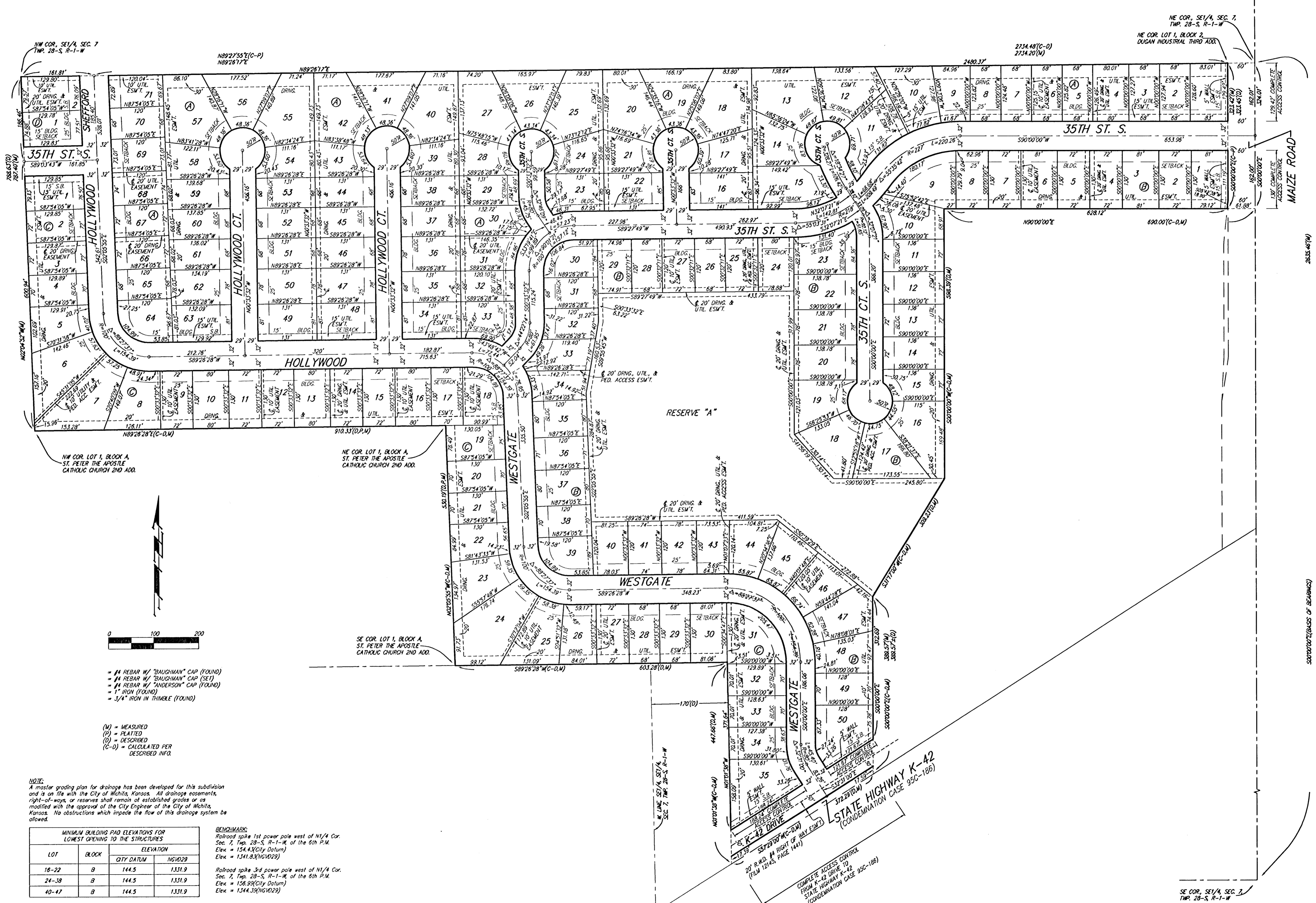


HARVEST RIDGE ADDITION

WICHITA, SEDGWICK COUNTY, KANSAS



- = #4 REBAR W/ "BAUGHMAN" CAP (FOUND)
- = #4 REBAR W/ "BAUGHMAN" CAP (SET)
- = #4 REBAR W/ "ANDERSON" CAP (FOUND)
- = 1" IRON (FOUND)
- = 3/4" IRON IN THIMBLE (FOUND)

- (M) = MEASURED
- (P) = PLATTED
- (D) = DESCRIBED
- (C-D) = CALCULATED PER DESCRIBED INFO

NOTE:
A master grading plan for drainage has been developed for this subdivision and is on file with the City of Wichita, Kansas. All drainage easements, right-of-ways, or reserves shall remain of established grades or as modified with the approval of the City Engineer of the City of Wichita, Kansas. No obstructions which impede the flow of this drainage system be allowed.

LOT	BLOCK	MINIMUM BUILDING PAD ELEVATIONS FOR LOWEST OPENING TO THE STRUCTURES	
		QTY DATUM	NGVD29
16-22	B	144.5	1331.9
24-38	B	144.5	1331.9
40-47	B	144.5	1331.9

BENCHMARK:
Railroad spike 1st power pole west of N1/4 Cor. Sec. 7, Twp. 28-S, R-1-W, of the 6th P.M. Elev. = 154.43(City Datum)
Elev. = 1341.83(NGVD29)
Railroad spike 3rd power pole west of N1/4 Cor. Sec. 7, Twp. 28-S, R-1-W, of the 6th P.M. Elev. = 158.99(City Datum)
Elev. = 1344.39(NGVD29)