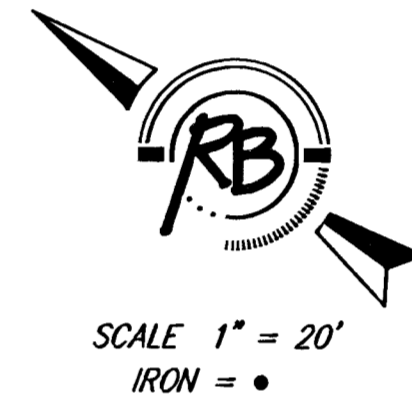
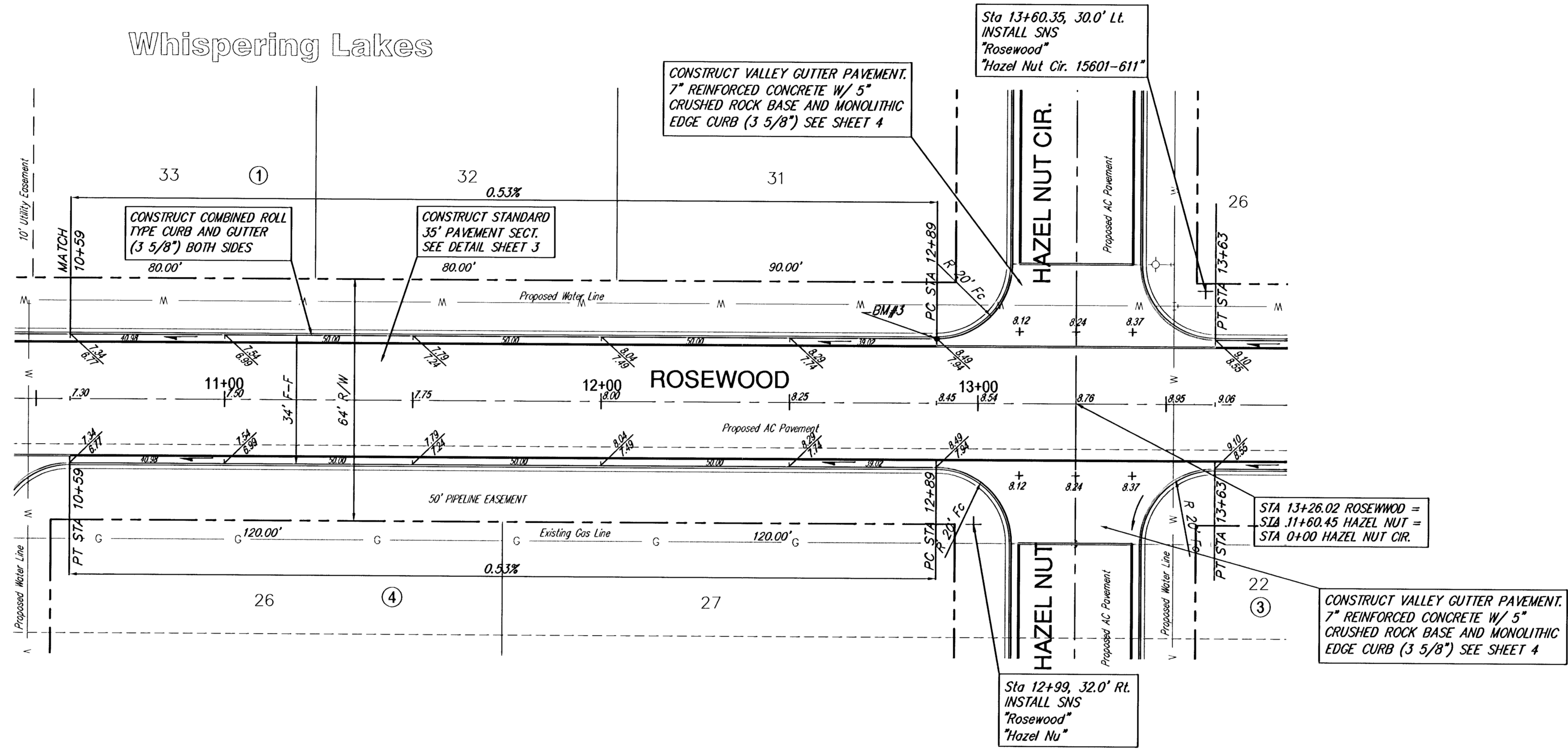


Subdivision Bench Marks

No.	Street and Station	From CL	Description	Elevation
3	Rosewood, Sta. 12+89.00	17.0' Lt.	N.W. End of Curb Return, Intersection of Rosewood and Hazel Nut Cir.	



Whispering Lakes Addition Rosewood WICHITA, KANSAS		DESIGN EG	RB WICHITA, KANSAS
Ruggles & Bohm, P.A. Engineering, Surveying, Land Planning		DRAWN RLS	
924 North Main Wichita, Kansas 67203 www.rbkansas.com		REVIEW	
(316) 264-8008 (316) 264-4621 fax E-mail: info@rbkansas.com		UTILITY	
DRAWING FILE paving {Whispering Lakes}	PROJECT NUMBER 472-84367	DATE Jan. 23, 2006	SHEET 7 OF 15