

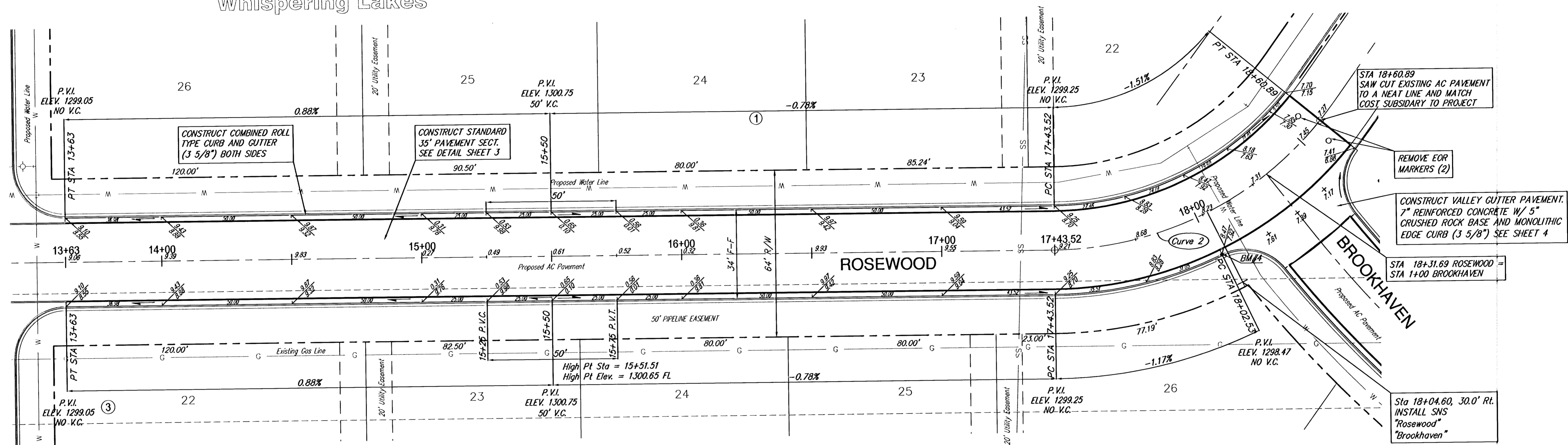
Subdivision Bench Marks

| No. | Street and Station | From CL | Description | Elevation |
|-----|-------------------------|-----------|--|-----------|
| 4 | Rosewood, Sta. 18+00.00 | 17.0' Rt. | N.W. End of Curb Return, Intersection of Rosewood and Brookhaven | |

Curve 2
Curve Data Based on Centerline
Rad. = 133' Delta = 54° 23' 40" Tangent = 68.34'
Arc = 117.37' L.C. = 121.58' Def/Pt. = 13.90333 Min.

| Station | Arc | FACE CHORD LENGTHS | | Defl. | T. Defl. |
|----------|--------|--------------------|--------|----------|-----------|
| | | to Lt. | to Rt. | | |
| 17+43.52 | - | - | - | 0'00"00" | 0'00"00" |
| 17+50.00 | 6.48' | 5.66' | 8.28' | 1'30"05" | 1'30"05" |
| 17+75.00 | 25.00' | 21.80' | 31.90' | 5'47"35" | 7'17"40" |
| 18+00.00 | 25.00' | 21.80' | 31.90' | 5'47"35" | 13'05"15" |
| 18+25.00 | 25.00' | 21.80' | 31.90' | 5'47"35" | 18'52"50" |
| 18+60.89 | 35.89' | 31.24' | 45.71' | 8'18"59" | 27'11"50" |

Whispering Lakes



**Whispering Lakes Addition
Rosewood
WICHITA, KANSAS**

Ruggles & Bohm, P.A.
Engineering, Surveying, Land Planning
924 North Main
Wichita, Kansas 67203
www.rbkansas.com

DESIGN: EG
DRAWN: RLS
REVIEW: [blank]
UTILITY: [blank]
DATE: Jan. 23, 2006

PROJECT NUMBER: 472-84367

DRAWING FILE: paving {Whispering Lakes}

8
OF
15