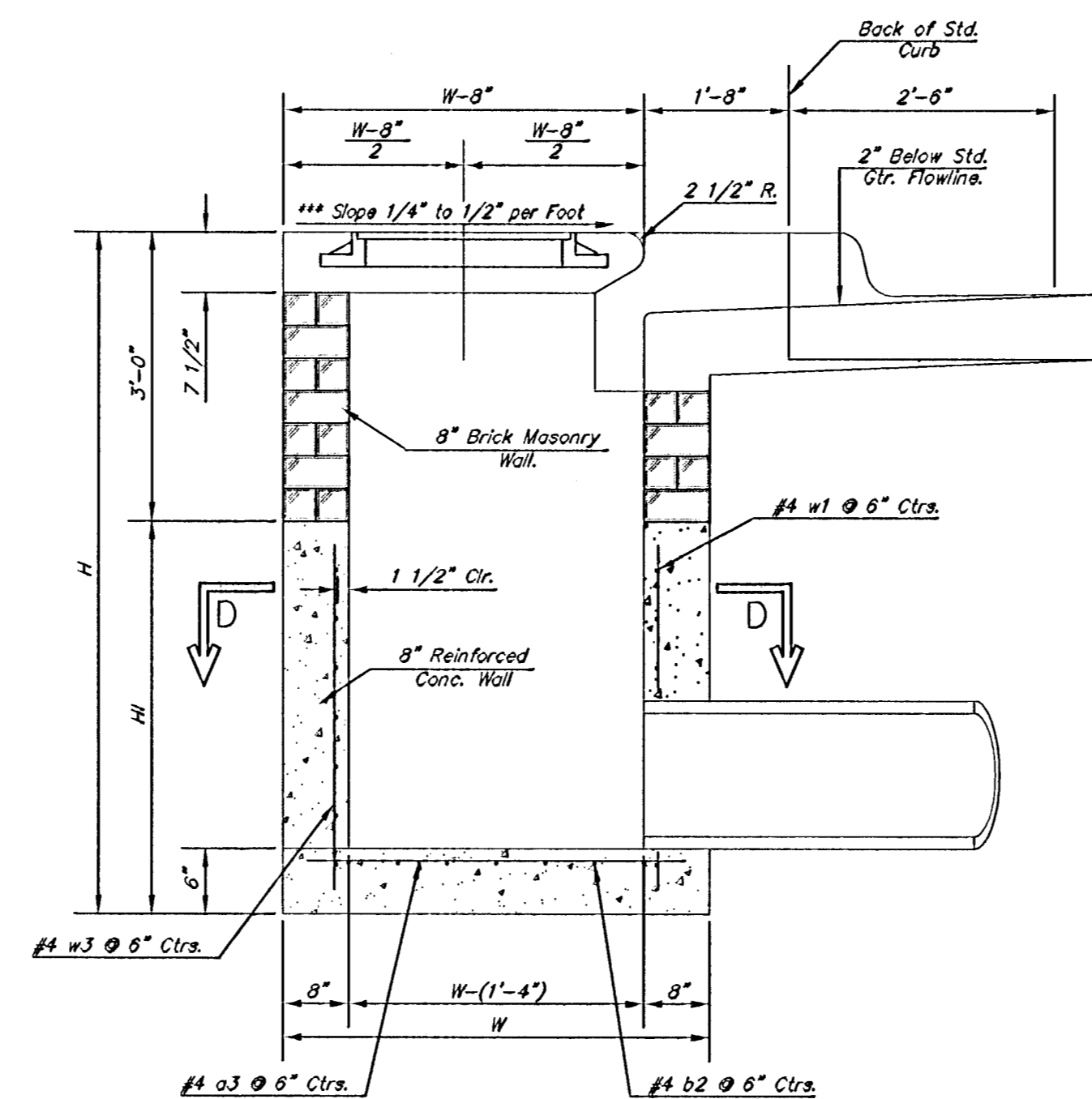


NOTE: Expansion Joint Only in Curb Area With Concrete Pavement.

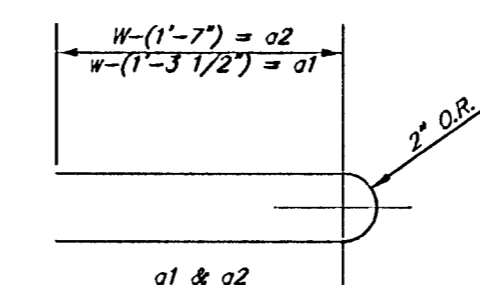
NOTE: Inlet Top Reinforcing shall be Spaced on 6" Max. Centers. Inlet Lids Shall be Notched Out as Indicated to Facilitate Construction of Curb.

NOTE: Concrete Tops to be installed on thin mortar cushion to insure full support along brick walls. Concrete tops may be cast in place or precast. Concrete used for inlet construction shall be concrete pavement mix with air entrainment.

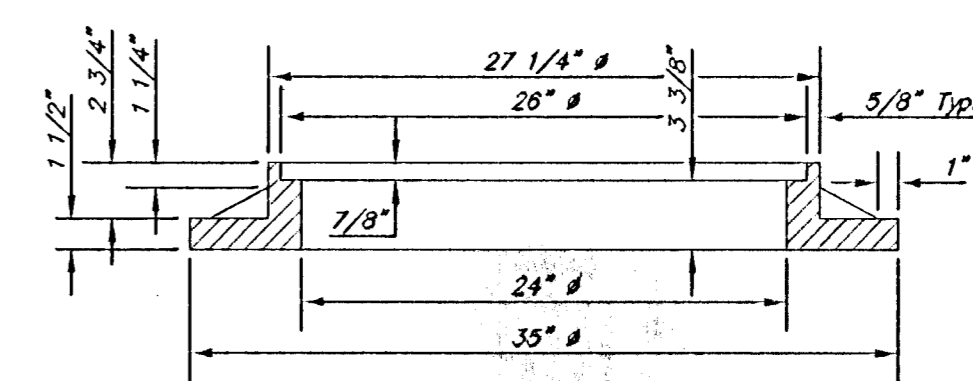
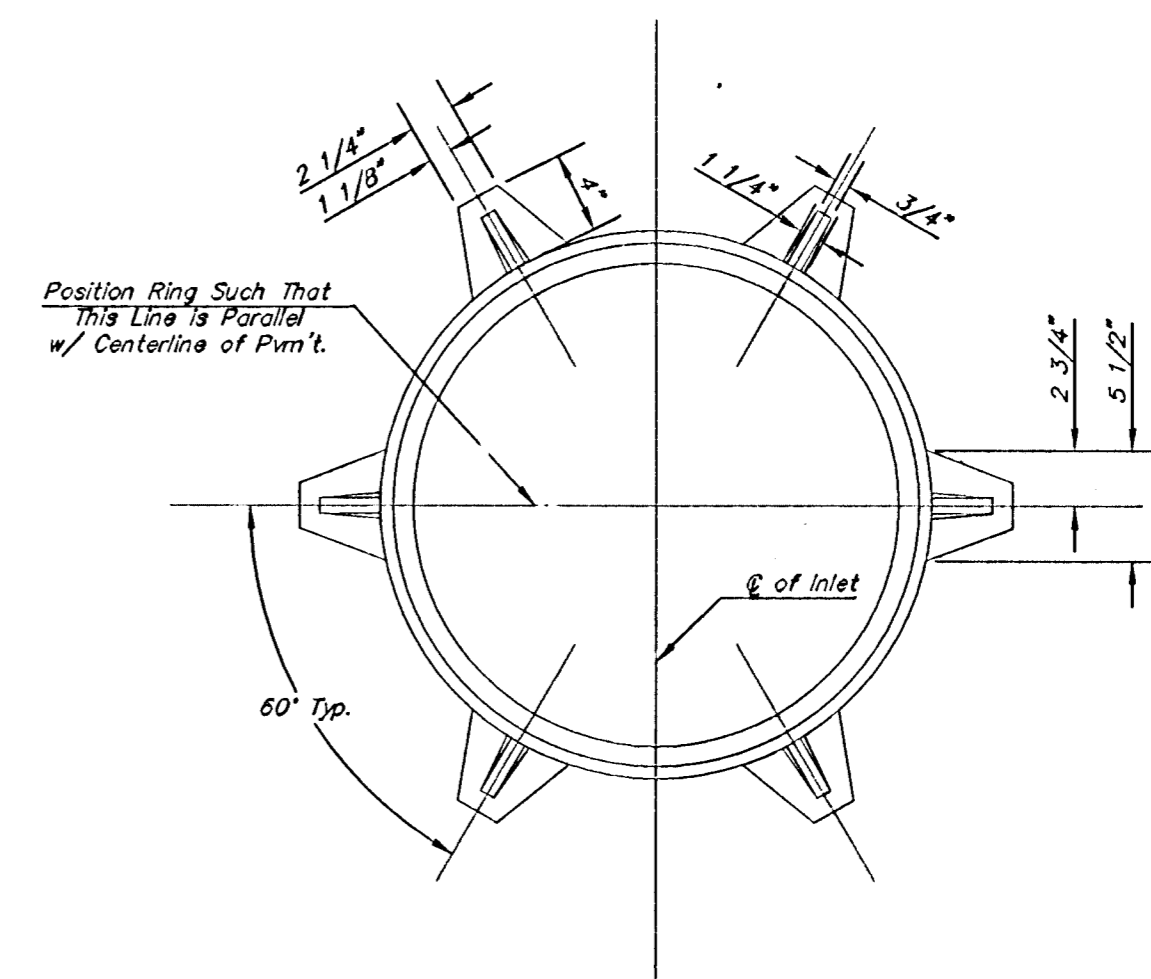


SECTION A-A

NOTE: Slope of Inlet tops to Match Sidewalk or Parking Slopes within Limits Indicated.

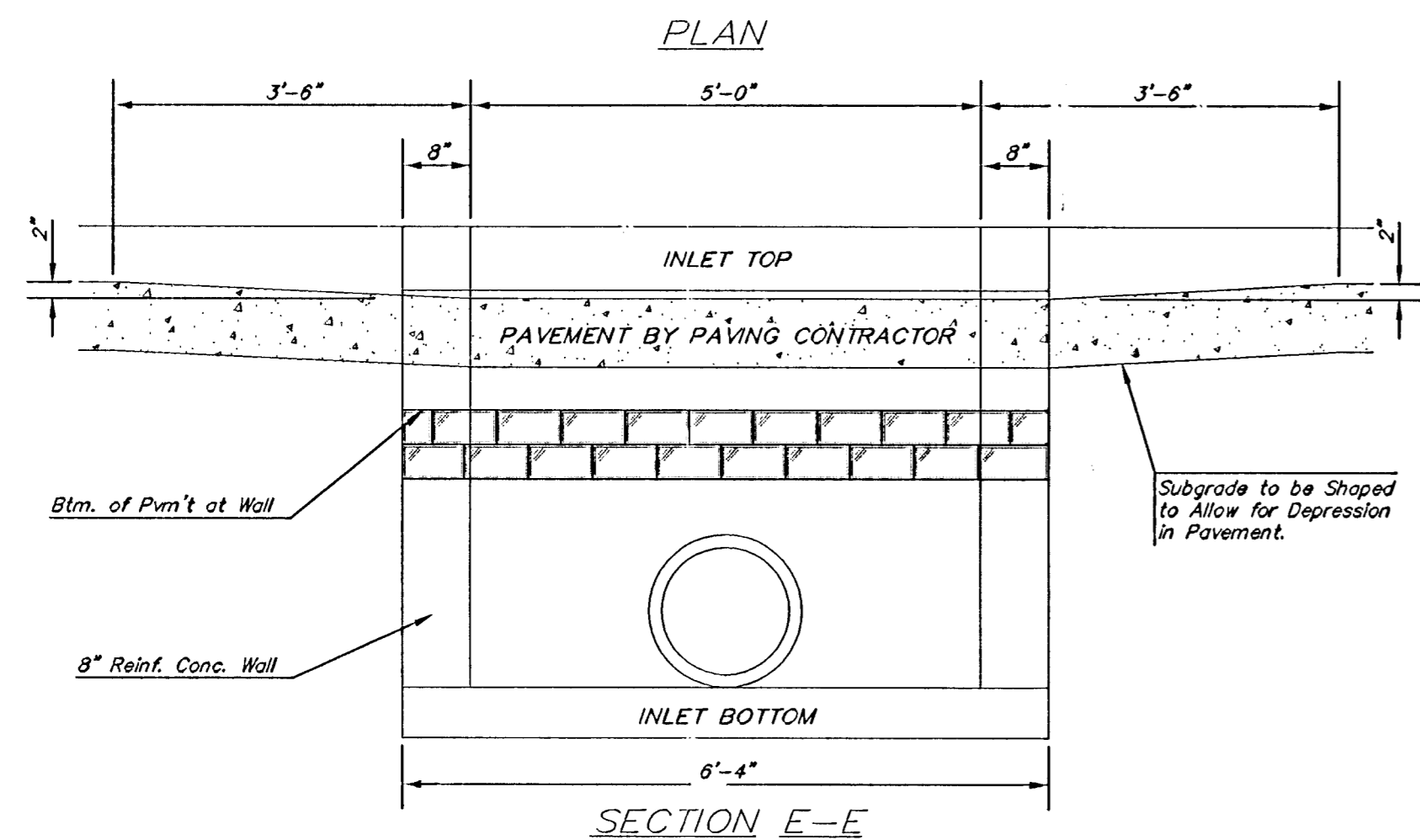


BENDING DIAGRAM

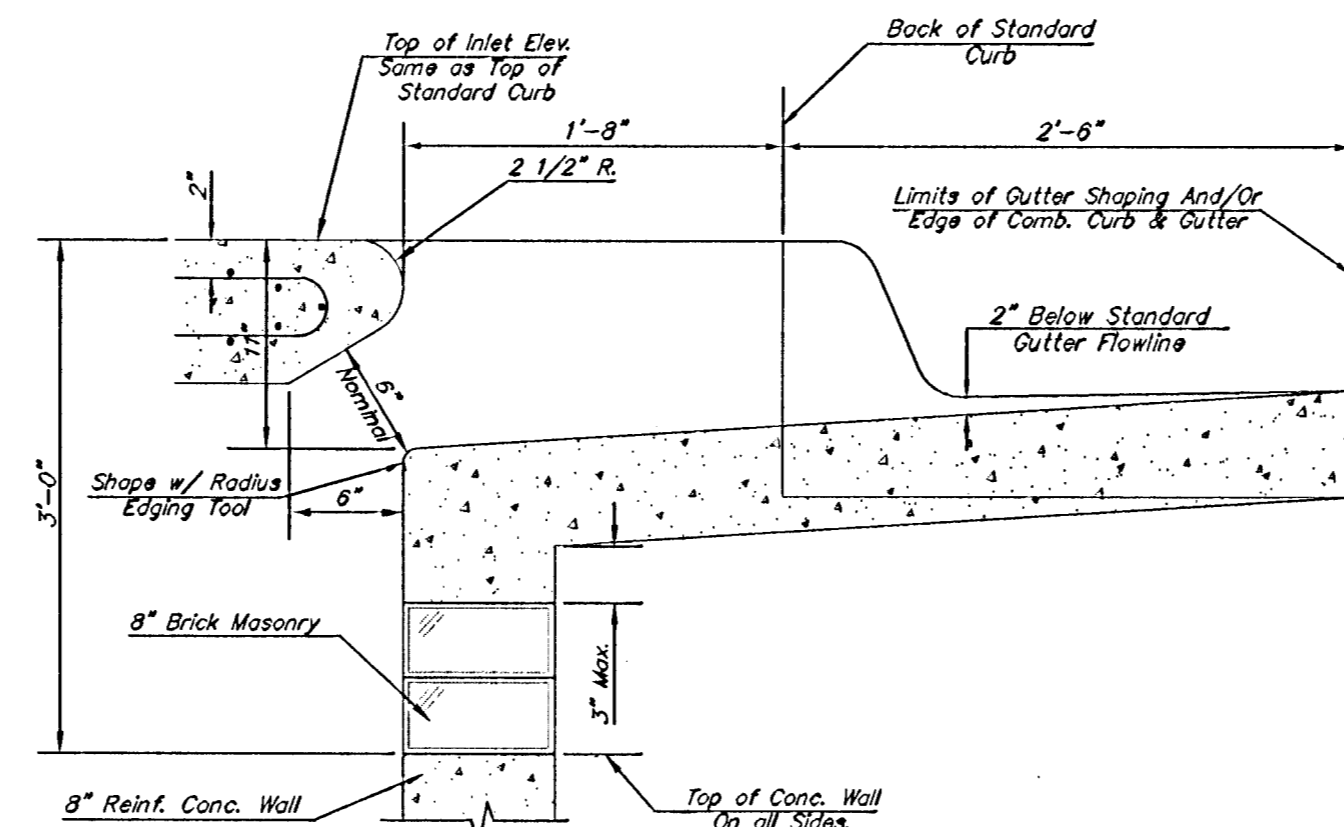


MANHOLE RING AND COVER

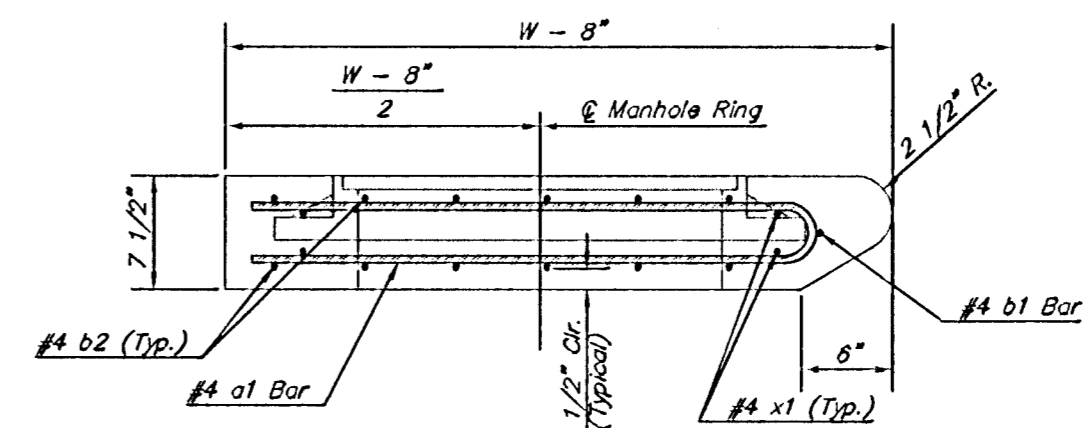
Weight = 100 lbs.
*See Standard Manhole Ring and Cover Detail Sheet for Cover Details to Be Used With Inlet Frame.



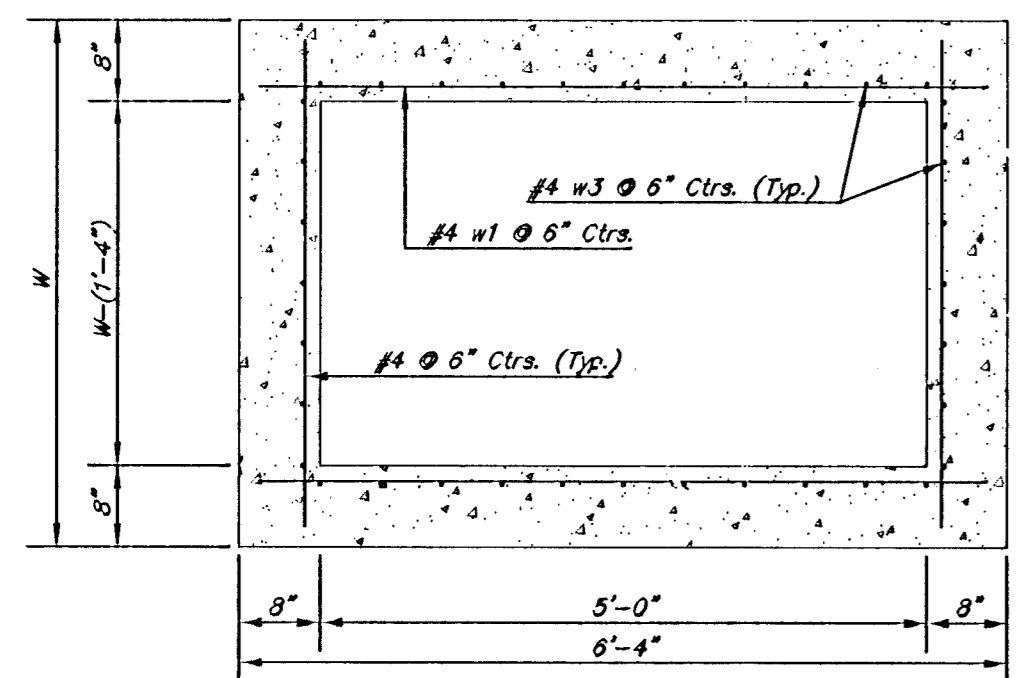
SECTION E-E



SECTION B-B



SECTION C-C



SECTION D-D

NOTE: Contractor shall have the option of constructing 8" brick masonry walls between the concrete inlet base and top on this inlet when W=6'-4" and H=7'-0" or less.
Additional curb and gutter construction necessary to connect set-back inlet to pavement will be paid for at the unit price bid for each inlet hookup.
Inlet invert shall be shaped with 8 sack sand mix concrete to create flow channels and to increase hydraulic efficiency such that the inlet will be self-cleaning between all inlet and/or outlet pipes.
The ends of all pipes installed in inlets shall be cut off flush with the inside face of the inlet wall.

PRECAST SLAB AND FLOOR REINFORCING											
MARK	SIZE	W = 4'-4"		W = 5'-4"		W = 6'-4"		W = 7'-4"		W = 8'-4"	
		NO.	LENGTH	NO.	LENGTH	NO.	LENGTH	NO.	LENGTH	NO.	LENGTH
#01	#4	8	8'-7"	8	8'-7"	8	10'-7"	8	12'-7"	8	14'-7"
#02	#4	4	8'-0"	4	8'-0"	4	10'-0"	4	12'-0"	4	14'-0"
#03	#4	13	4'-1"	13	3'-1"	13	6'-1"	13	7'-1"	13	8'-1"
#04	#4	1	4'-9"	1	4'-9"	1	4'-9"	1	4'-9"	1	4'-9"
#05	#4	23	8'-1"	29	8'-1"	35	8'-1"	41	8'-1"	47	8'-1"
#06	#4	8	3'-10"	8	4'-2"	8	4'-5"	8	4'-10"	8	5'-2"

WALL REINFORCING											
MARK	SIZE	W = 4'-4"		W = 5'-4"		W = 6'-4"		W = 7'-4"		W = 8'-4"	
		NO.	LENGTH	NO.	LENGTH	NO.	LENGTH	NO.	LENGTH	NO.	LENGTH
#07	#4	10	8'-1"	10	8'-1"	10	8'-1"	10	8'-1"	10	8'-1"
#08	#4	10	4'-1"	10	3'-1"	10	6'-1"	10	7'-1"	10	8'-1"
#09	#4	32	4'-1"	38	4'-1"	40	4'-1"	44	4'-1"	48	4'-1"

* Field Bend or Out Reinforcing as Required for Clearance.
① 4 (H - 12) (H - 21) Rounded down to nearest 0.5"
② H - 3"

STANDARD CURB INLET PRECAST TOPS			
W	PRE-CAST TOP SIZE	PIPE SIZE	CU. YD. CONC.
4'-4"	3'-8" x 8'-4" x 7 1/2"	21" & SMALLER	0.38±
5'-4"	4'-8" x 8'-4" x 7 1/2"	24" & 30"	0.51±
6'-4"	5'-8" x 8'-4" x 7 1/2"	36" & 42"	0.64±
7'-4"	6'-8" x 8'-4" x 7 1/2"	48" & 54"	0.77±
8'-4"	7'-8" x 8'-4" x 7 1/2"	60" & 66"	0.90±

STREET & SWS IMPROVEMENTS TO SERVE
STD. TYPE 1A CURB INLET (8'x5'-0" OPENING)
 BLUE SKY ADDITION, WICHITA, SEDGWICK COUNTY, KS
 CED PROJ. NO.: 20051279
CERTIFIED ENGINEERING DESIGN, P.A.
 810 WEST DOUGLAS, SUITE C
 WICHITA, KANSAS 67203
 PH.(316)262-8808 FAX.(316)262-1669

DESIGNED: HDF	SCALE: NTS	SHEET
DRAWN: JDT	DATE: 03-08	10
CHECKED: HDF	CED FILE: Str--details.dwg	TOTAL 17