

Street Paving For Hardtner
to serve

HIGHLAND SPRINGS 3RD ADDITION - PHASE III

Hardtner from the west line of Thoroughbred, west to the west line of the plat.
Kentucky Lane from the north line of Hardtner, south to the south line of the plat.
Hardtner Ct. from the north line of Hardtner, north to and including the cul-de-sac.
Binter Circle from the west line of Thoroughbred, west and northwest to and including the cul-de-sac.

CITY OF WICHITA, KANSAS

James L. Armour, P.E. City Engineer

Project Number
472-83780

O.C.A. Number
765991

Sheet Index

Title Sheet	1
35' Pavement Detail	2
29' Pavement Detail	3
Sign Detail	4
Miscellaneous Details	5
Entrance Details	6
Hardtner	7-8
Kentucky Lane & Hardtner Ct.	9-10
Binter Cir.	11-12
SWS Line 1	13-14
SWS Line 2 & SWS Line 2A	15-17
Coordinate Sheet	18
Erosion Control / Easement Grading	19
Soil Erosion BMP Details	20-23
Earthwork Cross Sections	24-30
Copy of Plat	31

Benchmarks

- #1 "□" Cut Top of Curb North End of Northwest Return at Highland Springs & Hardtner Elev. = 178.72 (City Datum)
- #2 "□" Cut Top of Curb West Side of Kentucky Lane ±20' South of End of Existing pavement. Elev. = 182.16 (City Datum)

GENERAL NOTES:

1. Contractor will be required to provide notice to utility companies a minimum of twenty-four (24) hours prior to any excavation, as follows:

Kansas One-Call 687-2470

The Contractor must notify the following in case of an emergency:

Cox Communications 262-4270
Kansas Gas Service 1-888-482-4950
Westar Energy 383-8650
Aquila Energy 1-800-303-0357
AT&T 268-2245
City of Wichita Water Dept. 268-4553
City of Wichita Sewer Maint. 268-4024
City of Wichita Storm Sewer Maint. 268-4030
City of Wichita Traffic Maint. 268-4034
Conoco Pipeline Co. 1-800-231-2551
Southern Star Pipeline Co. 529-6600
Phillips Pipeline Co. 1-800-766-8230
Jayhawk Pipeline Co. 1-888-542-9575

2. Utility service lines, poles, valve boxes, meters, and etcetera are to be adjusted as necessary by others prior to construction unless the plans specifically call for their adjustment by the Contractor or unless the plans specifically identify a utility to be adjusted by its owner during construction. Existing utilities and their location, as shown on the plans, represent the best information obtainable for design. The contractor will be required to work around existing utilities within the right-of-way which do not conflict with proposed construction.

3. Trees and shrubs in public right-of-way which are in direct conflict with proposed new construction shall be removed by the Contractor with the Engineer's approval. Trees and shrubs which are not in direct conflict with proposed new construction shall be saved and protected from damage.

4. All areas disturbed during construction shall be seeded at 300 lbs./acre with Rye Grass immediately following construction in that area. Contractor shall prepare ground per City Specifications.

5. Rubble from the removal of miscellaneous structures shall be disposed of on sites to be provided by the Contractor. These sites shall be approved by the Engineer as to suitability, appearance and site location. Locations that, in the opinion of the Engineer, will leave an unsightly appearance will not be approved. All disposal sites must be approved by the Kansas Department of Health and Environment. Material either stockpiled or disposed of in a flood plain would require a Kansas State Board of Agriculture permit. Any material dumped in waters of the United States or wetlands is subject to U.S. Corps. of Engineers permitting regulations. Any material buried or stockpiled beyond approved construction limits would require additional archaeological investigations unless buried in a previously approved borrow location.

6. The Contractor shall be responsible for preserving property irons. The Contractor will be required to re-establish any property irons which are damaged or destroyed by his construction operations. Such irons shall be re-established by a licensed land surveyor in accordance with state law.

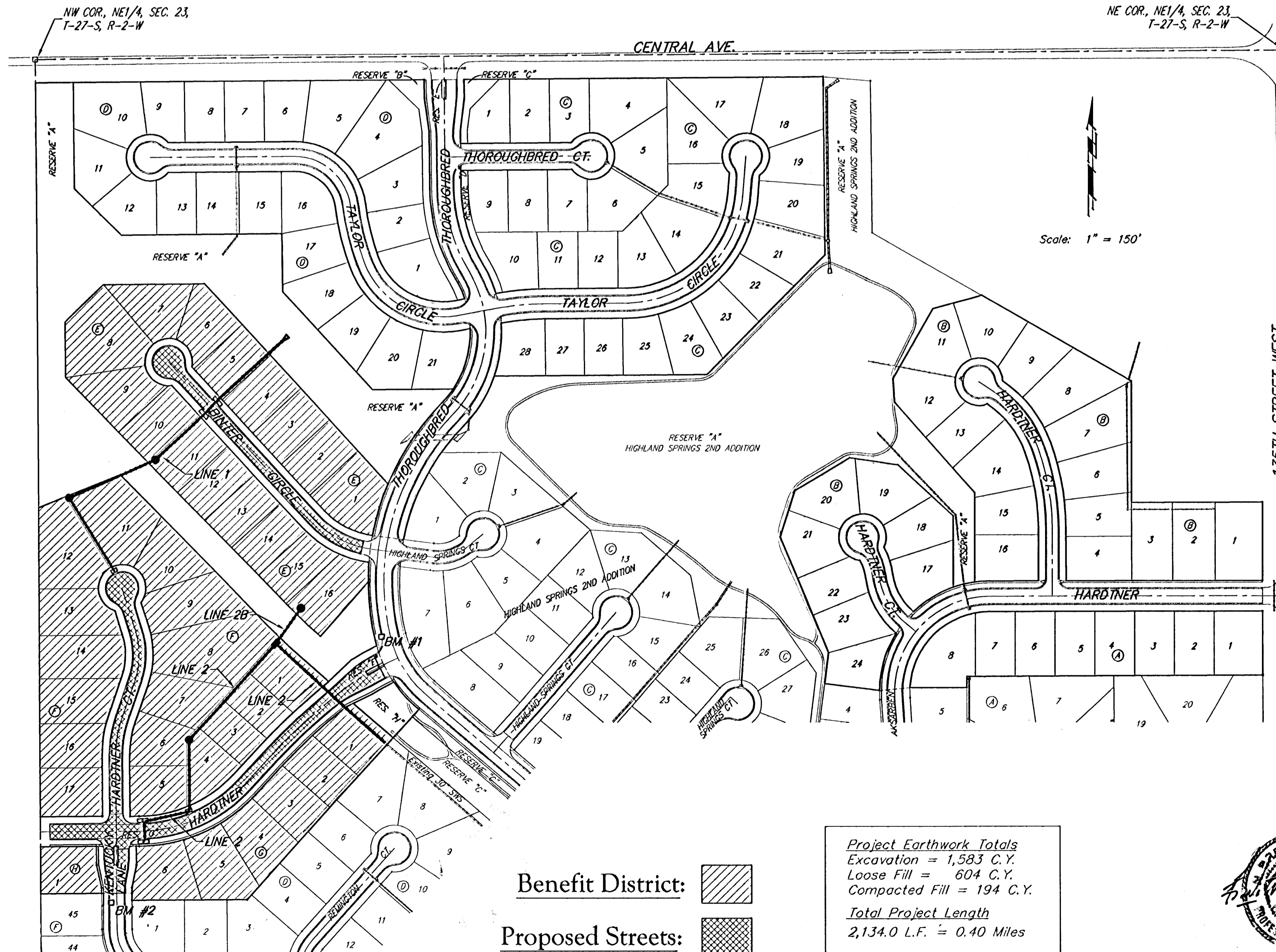
7. A saw cut of at least one-half the depth of existing surface courses of one-fourth the depth of the existing total pavement thickness shall be provided at locations where proposed construction abuts as existing surface course or pavement for which partial removal of that surface or pavement is required. Sawed joint to facilitate removal within three (3) feet of existing joints will not be permitted and for such instances the limits of removal shall extend to the existing joint. Such saw cuts will not be paid for directly and this cost shall be considered as subsidiary to the removal of the surface or pavement.



8. All existing and proposed erosion control measures including silt fencing, erosion control mat, straw bales, inlet barriers, and const. entrance shall be maintained throughout construction by the contractor and until project is accepted by the City of Wichita. The on-site engineer shall complete weekly reports on the status of erosion control measures. The contractor shall be required to comply with maintenance and/or replacement of erosion control measures as determined by the on-site engineer until project is accepted by City of Wichita. Maintenance and/or replacement of erosion control measures to be paid by L.S. bid item "Site Clearing & Restoration."

9. The Contractor shall give all property owners and/or tenants of developed property abutting the construction of this project a minimum of ten (10) days advance notice prior to start of construction.

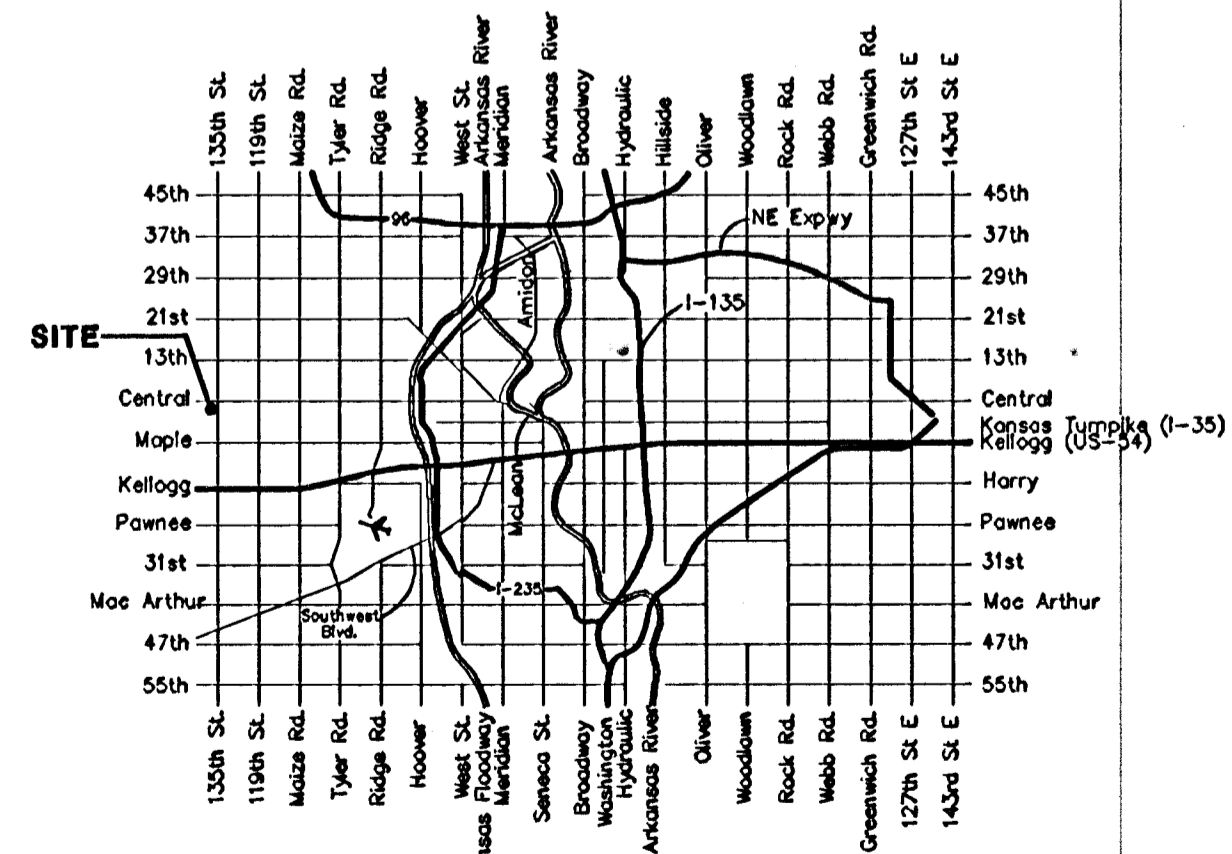
10. All excess excavation shall remain on site and be spread out evenly on the lots out of easements & R/W's.

11. The developer of this project is Paul E. Kelsey and may be reached at (316) 722-1077



Benefit District: 
Proposed Streets: 

Project Earthwork Totals
Excavation = 1,583 C.Y.
Loose Fill = 604 C.Y.
Compacted Fill = 194 C.Y.
Total Project Length
2,134.0 L.F. = 0.40 Miles



Vicinity Map



Baughman Company, P.A. 315 Ella St. Wichita, KS 67211 P 316-262-7271 F 316-262-0144
ENGINEERING | SURVEYING | PLANNING | LANDSCAPE ARCHITECTURE