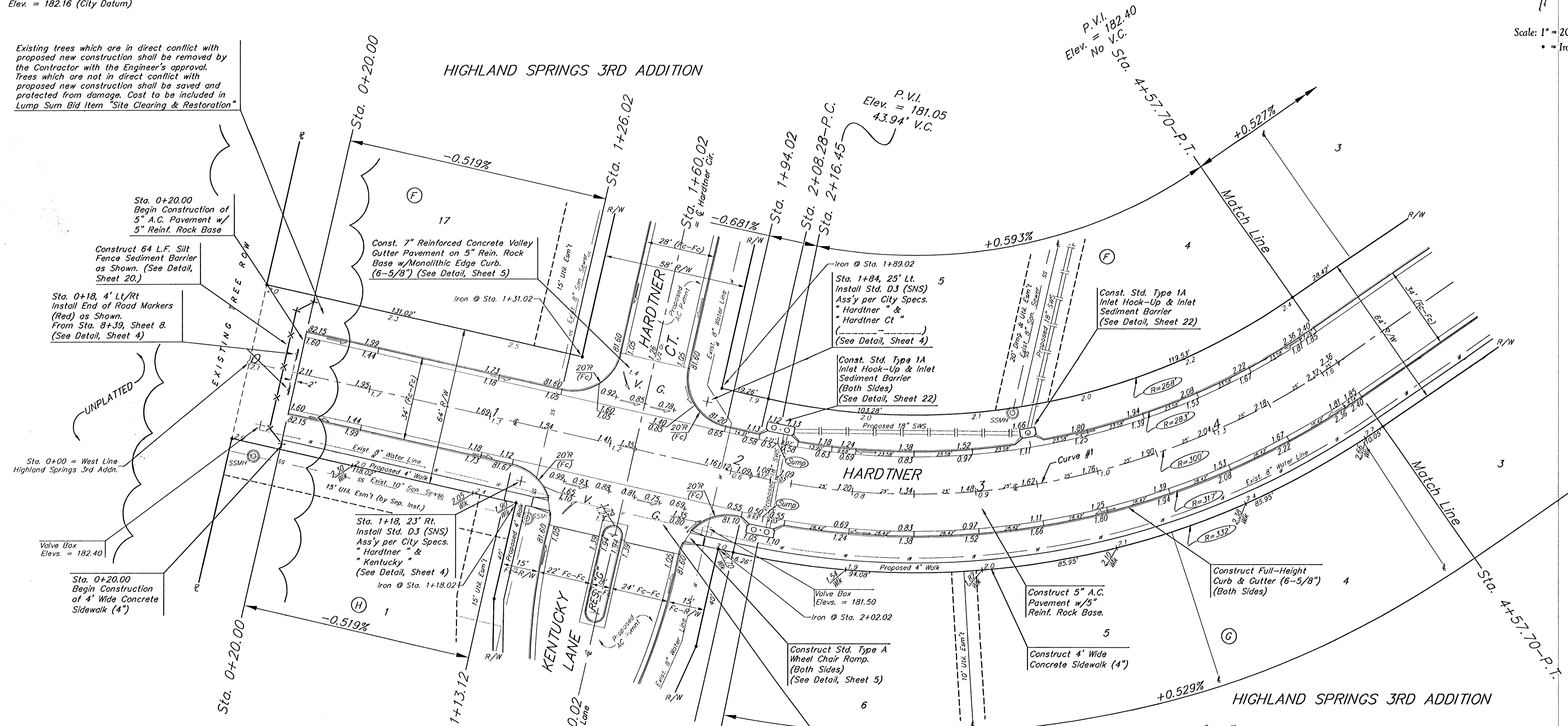


**Benchmarks:**

"□" Cut Top of Curb North End of Northwest Return at Highland Springs & Hardtner Elev. = 178.72 (City Datum)

"□" Cut Top of Curb West Side of Kentucky Lane ±20' South of End of Existing pavement. Elev. = 182.16 (City Datum)

Existing trees which are in direct conflict with proposed new construction shall be removed by the Contractor with the Engineer's approval. Trees which are not in direct conflict with proposed new construction shall be saved and protected from damage. Cost to be included in Lump Sum Bid Item "Site Clearing & Restoration"



P.V.I. = 182.40  
Elev. No V.C. Sta. 4+57.70-P.T.

P.V.I. = 181.05  
Elev. 43.94' V.C.

Scale: 1" = 20'  
• = Iron

Curve #1  
Curve Data Based on Centerline  
Rad. = 300' Delta = 47° 38' 07" Tangent = 132.43'  
Arc = 249.42' L.C. = 242.30' Del./Ft. = 5.72953 Min.

Station	Arc	FACE CHORD LENGTHS		Defl.	T. Defl.
		8' Lt.	8' Rt.		
2+08.28	-	-	-	0°00'00"	0°00'00"
2+16.45	8.17'	7.49'	8.85'	0°46'48"	0°46'48"
2+25.00	8.55'	7.84'	9.26'	0°48'59"	1°35'48"
2+50.00	25.00'	22.91'	27.08'	2°23'14"	3°59'02"
2+75.00	25.00'	22.91'	27.08'	2°23'14"	6°22'16"
3+00.00	25.00'	22.91'	27.08'	2°23'14"	8°45'31"
3+25.00	25.00'	22.91'	27.08'	2°23'14"	11°08'45"
3+50.00	25.00'	22.91'	27.08'	2°23'14"	13°31'59"
3+75.00	25.00'	22.91'	27.08'	2°23'14"	15°55'13"
4+00.00	25.00'	22.91'	27.08'	2°23'14"	18°18'28"
4+25.00	25.00'	22.91'	27.08'	2°23'14"	20°41'42"
4+50.00	25.00'	22.91'	27.08'	2°23'14"	23°04'56"
4+57.70	7.70'	7.06'	8.34'	0°44'07"	23°49'03"

Highland Springs 3rd Addition - Phase III

**HARDTNER**  
Baughman

STA. 0+20.00 - STA. 4+57.70

Highland Springs 3rd Addition - Phase III

PROJECT NUMBER: 472-53780

DESIGN: NBW/JAK

DATE: 6/21/06

SCALE: Noted

SHEET: 7 OF 31