

Benchmarks:

"□" Cut Top of Curb North End of Northwest Return at Highland Springs & Hardtner Elev. = 178.72 (City Datum)

"□" Cut Top of Curb West Side of Kentucky Lane ±20' South of End of Existing pavement. Elev. = 182.16 (City Datum)

P.V.I. Elev. = 182.40 No V.C.

P.V.I. Elev. = 182.85 64.56' V.C.

Scale: 1" = 20'
• = Iron

CAUTION!
Ex. 4" SemCrude Gas Line Crossing. Contractor to contact Aaron King with SemCrude at least 48 hours prior to Construction at 316-323-6565.

Const. Full-Height Low Edge Median Curb & Gutter. (6-5/8") (See Detail, Sheet 6)

Sta. 8+15, 1' Lt. Install R4-7 (Keep Right) & OM-1 Sign.

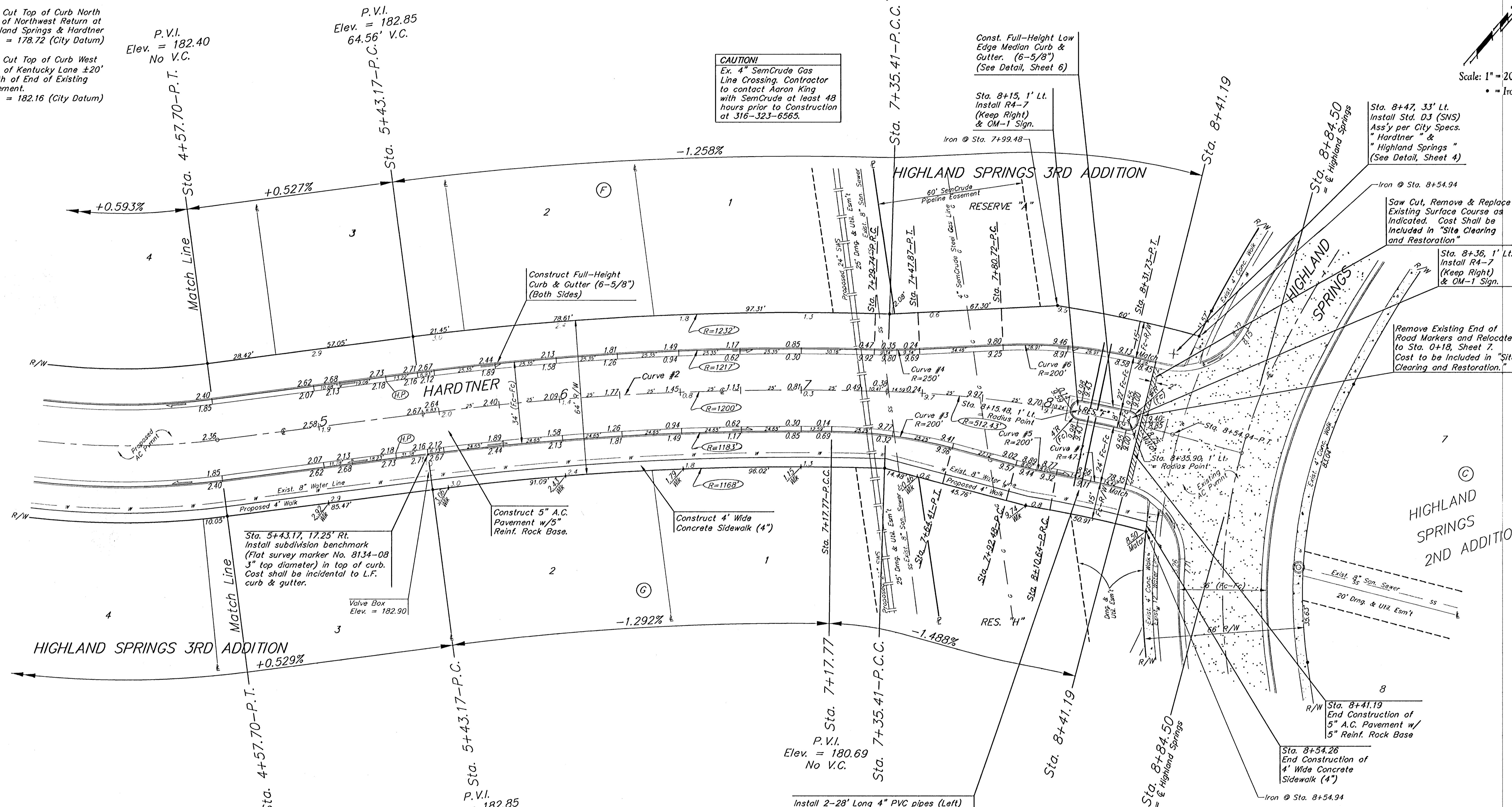
Iron @ Sta. 7+99.48

Sta. 8+47, 33' Lt. Install Std. D3 (SNS) Ass'y per City Specs. "Hardtner" & "Highland Springs" (See Detail, Sheet 4)

Saw Cut, Remove & Replace Existing Surface Course as Indicated. Cost Shall be Included in "Site Clearing and Restoration"

Sta. 8+36, 1' Lt. Install R4-7 (Keep Right) & OM-1 Sign.

Remove Existing End of Road Markers and Relocate to Sta. 0+18, Sheet 7. Cost to be Included in "Site Clearing and Restoration."



Curve #2
Curve Data Based on Centerline
Rad. = 1200' Delta = 9° 10' 44" Tangent = 96.33'
Arc = 192.24' L.C. = 192.04' Def/Ft. = 1.43241 Min.

Station	Arc	FACE CHORD LENGTHS		Defl.	T. Defl.
		8' Lt.	8' Rt.		
5+43.17	-	-	-	0°00'00"	0°00'00"
5+50.00	6.83'	6.97'	6.69'	0°09'47"	0°09'47"
5+75.00	25.00'	25.52'	24.48'	0°35'48"	0°45'35"
6+00.00	25.00'	25.52'	24.48'	0°35'48"	1°21'24"
6+25.00	25.00'	25.52'	24.48'	0°35'48"	1°57'13"
6+50.00	25.00'	25.52'	24.48'	0°35'48"	2°33'01"
6+75.00	25.00'	25.52'	24.48'	0°35'48"	3°08'50"
7+00.00	25.00'	25.52'	24.48'	0°35'48"	3°44'38"
7+17.77	17.77'	18.14'	17.40'	0°25'27"	4°10'06"
7+25.00	7.23'	7.38'	7.08'	0°10'21"	4°20'27"
7+29.74	4.74'	4.84'	4.64'	0°06'47"	4°27'14"
7+35.41	5.67'	5.79'	5.55'	0°08'07"	4°35'22"

Curve #3
Curve Data Based on Face of Curb
Rad. = 200' Delta = 14° 28' 00" Tangent = 25.38'
Arc = 50.5' L.C. = 50.36' Def/Ft. = 8.59406 Min.

CL Station	Arc	CHORD		Defl.	T. Defl.
		8' Lt.	8' Rt.		
7+12.77	-	-	-	0°00'00"	0°00'00"
7+29.74	-	-	-	0°00'00"	0°00'00"
7+38.87	9.34'	9.04'	9.04'	1°04'11"	1°04'11"
7+47.87	9.34'	9.04'	9.04'	1°04'11"	2°08'22"

Curve #4
Curve Data Based on Face of Curb
Rad. = 250' Delta = 4° 16' 44" Tangent = 9.34'
Arc = 18.68' L.C. = 18.67' Def/Ft. = 6.87188 Min.

CL Station	Arc	CHORD		Defl.	T. Defl.
		8' Lt.	8' Rt.		
7+29.74	-	-	-	0°00'00"	0°00'00"
7+38.87	9.34'	9.04'	9.04'	1°04'11"	1°04'11"
7+47.87	9.34'	9.04'	9.04'	1°04'11"	2°08'22"

Curve #5
Curve Data Based on Face of Curb
Rad. = 200' Delta = 4° 55' 43" Tangent = 8.61'
Arc = 17.2' L.C. = 17.20' Def/Ft. = 8.59641 Min.

CL Station	Arc	CHORD		Defl.	T. Defl.
		8' Lt.	8' Rt.		
7+92.48	-	-	-	0°00'00"	0°00'00"
8+01.57	8.60'	8.95'	8.95'	1°13'56"	1°13'56"
8+10.64	8.60'	8.95'	8.95'	1°13'56"	2°27'51"

Curve #6
Curve Data Based on Face of Curb
Rad. = 200' Delta = 15° 24' 59" Tangent = 27.07'
Arc = 53.82' L.C. = 53.65' Def/Ft. = 8.59330 Min.

CL Station	Arc	CHORD		Defl.	T. Defl.
		8' Lt.	8' Rt.		
7+80.72	-	-	-	0°00'00"	0°00'00"
8+06.19	26.81'	27.86'	27.86'	3°50'23"	3°50'23"
8+31.73	27.01'	28.07'	28.07'	3°52'06"	7°42'29"

P.V.I. Elev. = 180.69 No V.C.

Install 2-28' Long 4" PVC pipes (Left) & 2-30' long 4" PVC pipes (Right) under pavement. Cap each end. Mark Ends of Pipe with Wooden Stake Painted Pink. (Incidental to Project Cost)

Highland Springs 3rd Addition - Phase III
HARDTNER
Baughman
STA. 4+57.70 - STA. 8+41.19

PROJECT NUMBER: 472-83780
DESIGN: NBW/JAK
SCALE: AS SHOWN

REVISIONS:
APPROVED: DATE: 6/21/06
DRAWN: TMS/JAK

8 OF 31
F:\Eng\Highland Springs 3rd\Phase 3\Sheet 0509E358