

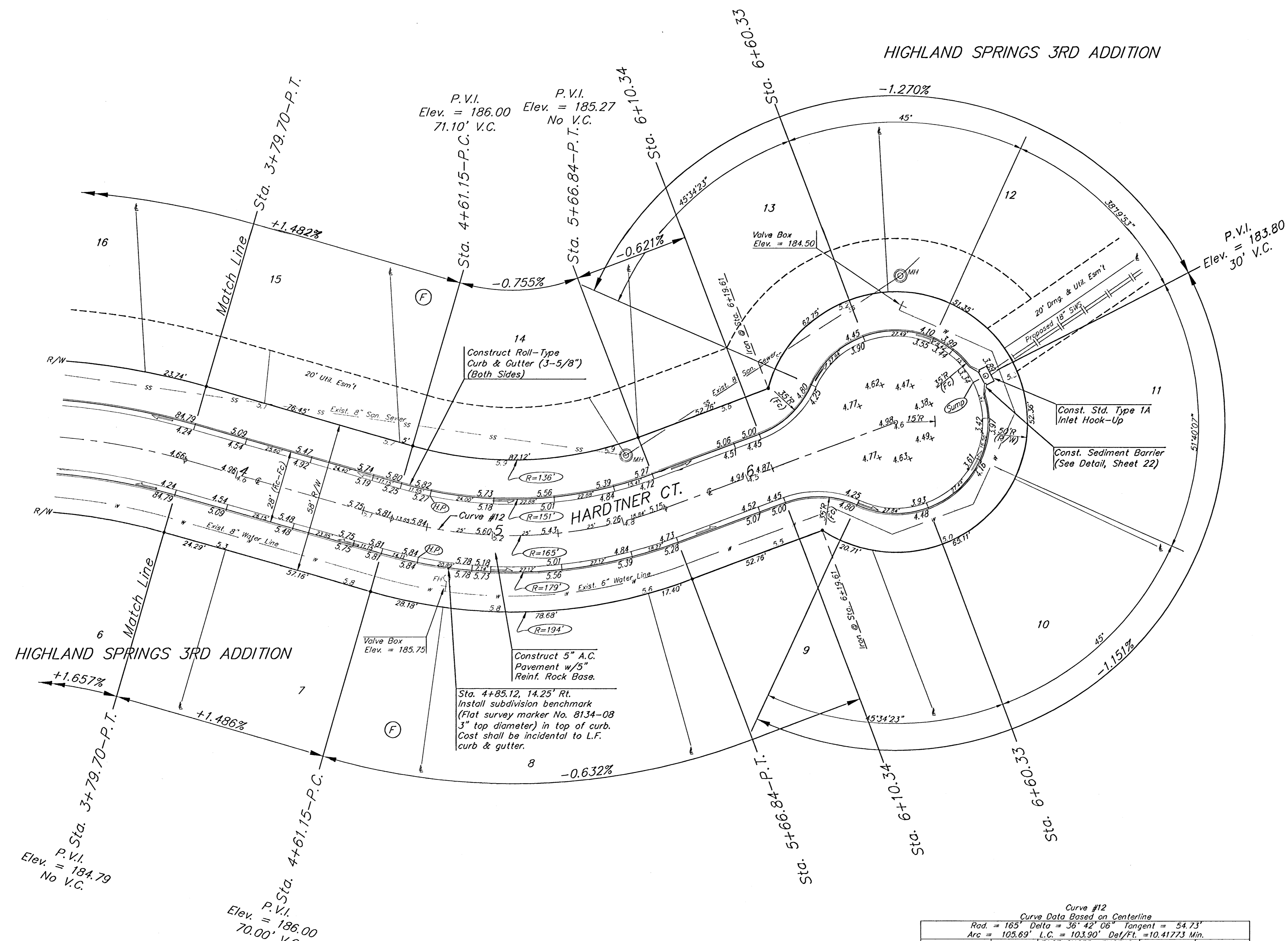
Benchmarks:

"□" Cut Top of Curb North End of Northwest Return at Highland Springs & Hardtner Elev. = 178.72 (City Datum)

"□" Cut Top of Curb West Side of Kentucky Lane ±20' South of End of Existing pavement. Elev. = 182.16 (City Datum)



Scale: 1" = 20'
• = Iron



Match Line
Sta. 3+79.70-P.T.
P.V.I. Elev. = 184.79
No V.C.

Match Line
Sta. 4+61.15-P.C.
P.V.I. Elev. = 186.00
70.00' V.C.

P.V.I. Elev. = 186.00
71.10' V.C.

P.V.I. Elev. = 185.27
No V.C.

P.V.I. Elev. = 183.80
30' V.C.

Roll type curb & gutter to be constructed on the pavement on this sheet. Top of curb elevation are given for full height curb.

Curve #12
Curve Data Based on Centerline
Rad. = 165' Delta = 36°42'06" Tangent = 54.73'
Arc = 103.69' L.C. = 103.90' Def/Ft. = 10.41773 Min.

Station	Arc	FACE CHORD LENGTHS		Def.	T. Def.
		8" Lt.	8" Rt.		
4+61.15	-	-	-	0'00"00"	0'00"00"
4+75.00	13.85'	12.00'	15.69'	2'24'17"	2'24'17"
5+00.00	25.00'	21.65'	28.31'	4'20'27"	6'44'44"
5+25.00	25.00'	21.65'	28.31'	4'20'26"	11'05'10"
5+50.00	25.00'	21.65'	28.31'	4'20'27"	15'25'37"
5+66.84	16.84'	14.59'	19.08'	2'55'26"	18'21'03"

highland Springs 3rd Addition - Phase III
HARDTNER CT.
Sta. 3+79.70 - STA. 6+60.33

Baughman
Baughman Company, P.A. 315 Ellis St. Wichita, KS 67211 F 316-267-7111 F 316-262-0149
ENGINEERING | SURVEYING | PLANNING | LANDSCAPE ARCHITECTURE

PROJECT NUMBER: 472-83780
DESIGN: NBW/JAK
DRAWN: TMS/JAK
APPROVED: DATE: 6/21/06
SCALE: Noted
SHEET: 10 OF 31

F:\Eng\Highland Springs 3rd\Phase 3\Sht4 05-09-E338